

STATE OF ILLINOIS  
DEPARTMENT OF TRANSPORTATION  
DIVISION OF HIGHWAYS

**PROPOSED  
HIGHWAY PLANS**

FAI ROUTE 70 (I-70)  
SECTION 60-13RA-1  
SILVER LAKE REST AREAS  
SIDEWALK AND CURB IMPROVEMENTS  
MADISON COUNTY

C-98-039-12

FAI RTE.	SECTION	COUNTY	TOTAL SHEETS	SHEET NO.
70	60-13RA-1	MADISON	6	1
ILLINOIS			CONTRACT NO. 76F46	

D-98-035-12

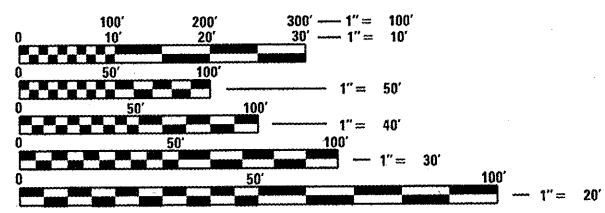


**INDEX OF SHEETS**

- 1 COVER SHEET
- 2 SOO, NOTES AND COMMITMENTS
- 3-4 PLAN SHEETS
- 5-6 REMOVAL SHEETS

**HIGHWAY STANDARDS**

- 000001-06
- 001006
- 424001-06
- 424006
- 606001-04
- 701801-05



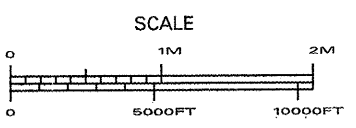
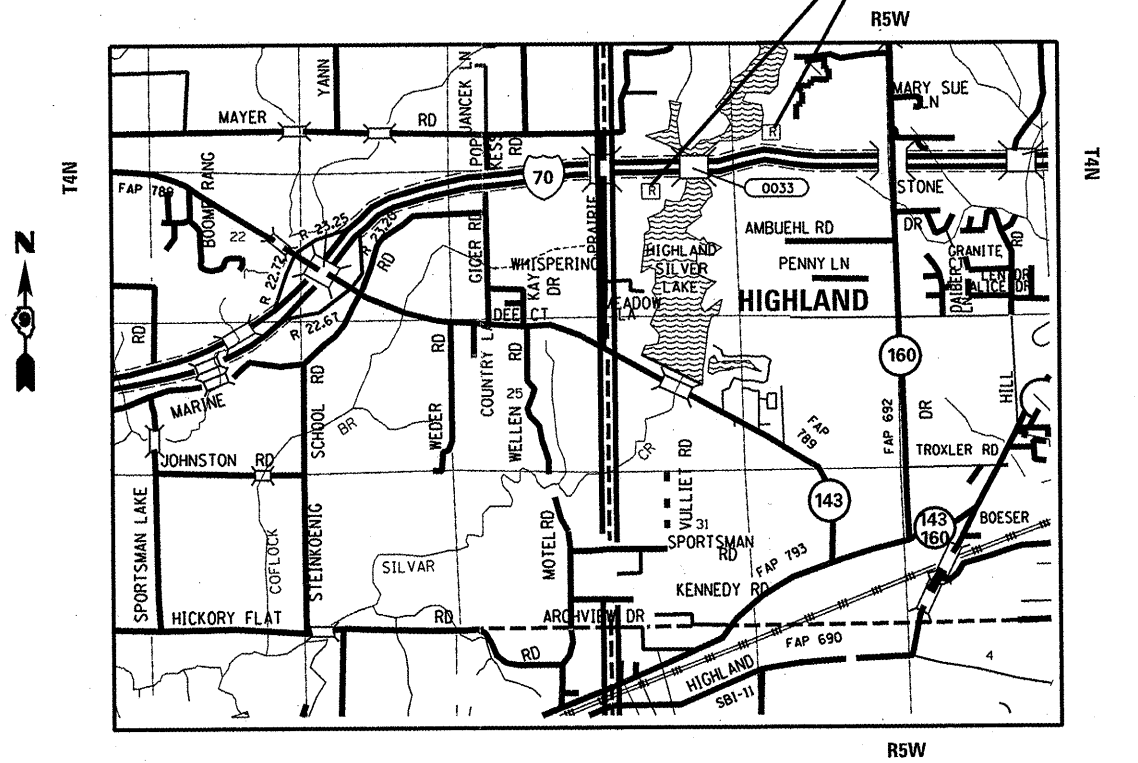
FULL SIZE PLANS HAVE BEEN PREPARED USING STANDARD ENGINEERING SCALES. REDUCED SIZED PLANS WILL NOT CONFORM TO STANDARD SCALES. IN MAKING MEASUREMENTS ON REDUCED PLANS, THE ABOVE SCALES MAY BE USED.

J.U.L.I.E.  
JOINT UTILITY LOCATION INFORMATION FOR EXCAVATION  
1-800-892-0123  
OR 811

PROJECT ENGINEER: TIM PADGETT (618)346-3325  
PROJECT MANAGER: LIZ BURNSIDE (618)346-3196

CONTRACT NO. 76F46

SILVER LAKE REST AREAS  
PROJECT LOCATION



STATE OF ILLINOIS  
DEPARTMENT OF TRANSPORTATION  
DIVISION OF HIGHWAYS

SUBMITTED December 23, 2011

*John D. Padgett*  
DEPUTY DIRECTOR OF HIGHWAYS, REGION ENGINEER

Feb 3, 2012  
*John D. Baranowski*  
acting ENGINEER OF DESIGN AND ENVIRONMENT

Feb 3, 2012  
*William R. Feenstra*  
acting DIRECTOR OF HIGHWAYS, CHIEF ENGINEER

**PRINTED BY THE AUTHORITY  
OF THE STATE OF ILLINOIS**