

STATE OF ILLINOIS  
DEPARTMENT OF TRANSPORTATION  
DIVISION OF HIGHWAYS

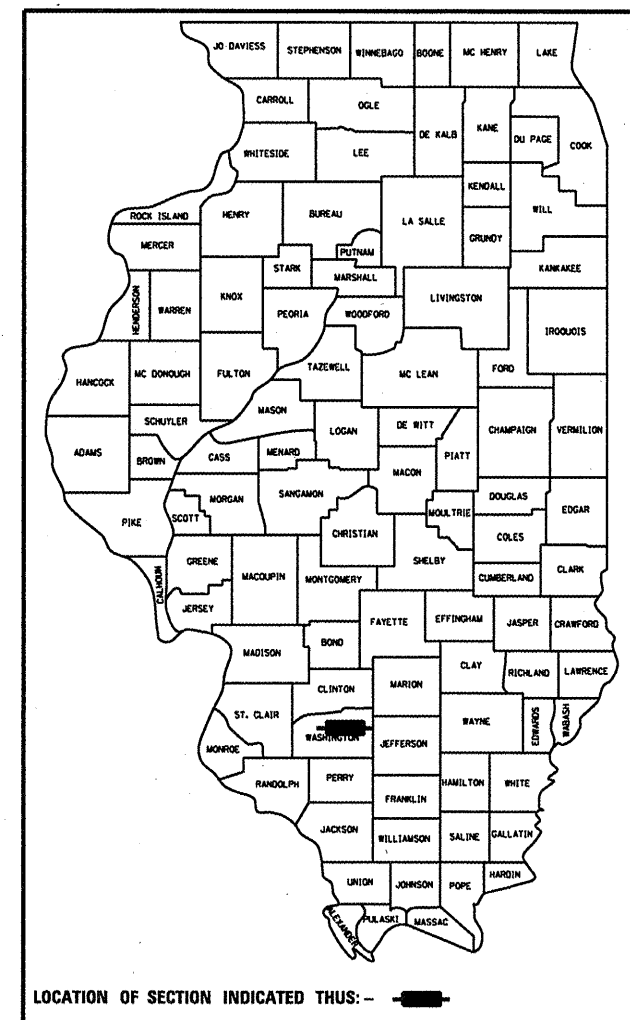
**PROPOSED  
HIGHWAY PLANS**

FAP ROUTE 322/821 (IL 15/US 51)  
SECTION (10-1,11)RS-3  
PROJECT HSIP-F-000S(872)  
RESURFACING - 3P  
WASHINGTON COUNTY

F.A.P. RTE.	SECTION	COUNTY	TOTAL SHEETS	SHEET NO.
*	(10-1,11)RS-3	WASHINGTON	18	1
*322/821		ILLINOIS	CONTRACT NO. 76E52	

FOR INDEX OF SHEETS, SEE SHEET NO. 2

D-98-008-11

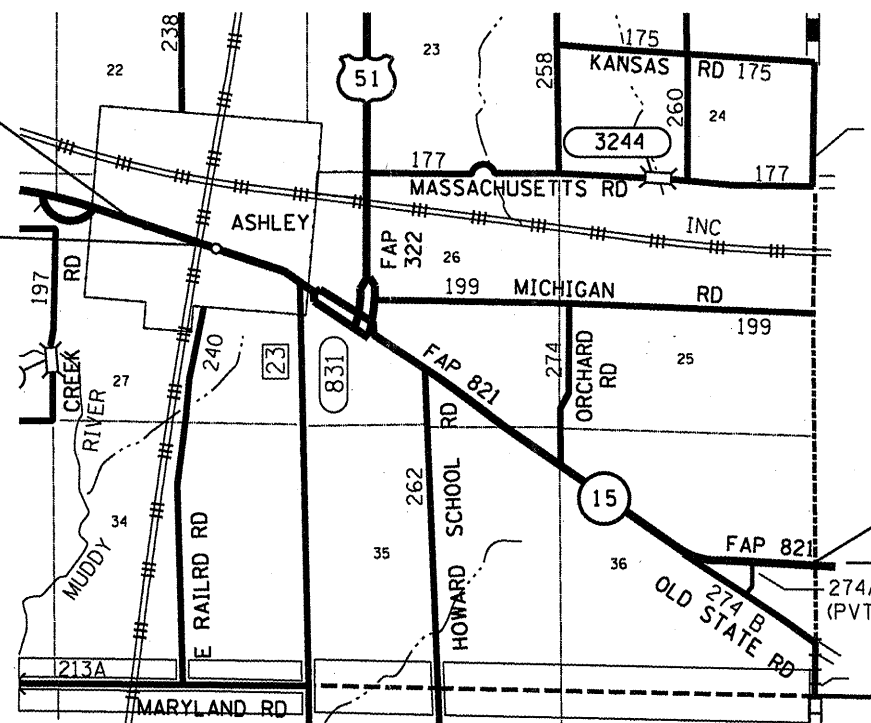


LOCATION OF SECTION INDICATED THUS: - [shaded box] -

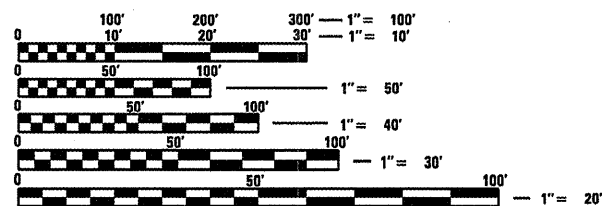
**BEGIN PROJECT**  
STA. 2568 + 50  
LAT: 38.328135  
LONG: -89.195353

**RR OMISSION**  
10'

C-98-005-11



**END PROJECT**  
STA. 2732 + 87  
LAT: 38.307790  
LONG: -89.146215

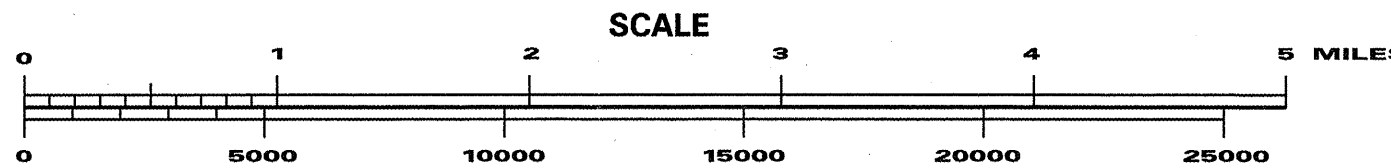


FULL SIZE PLANS HAVE BEEN PREPARED USING STANDARD ENGINEERING SCALES. REDUCED SIZED PLANS WILL NOT CONFORM TO STANDARD SCALES. IN MAKING MEASUREMENTS ON REDUCED PLANS, THE ABOVE SCALES MAY BE USED.

J.U.L.I.E.  
JOINT UTILITY LOCATION INFORMATION FOR EXCAVATION  
1-800-892-0123  
OR 811

PROJECT ENGINEER: PATTI LEBEAU 618-346-3179  
PROJECT MANAGER: BILLIE OWEN 618-246-3186

CONTRACT NO. 76E52



GROSS LENGTH = 16437 FT. = 3.11 MILE  
NET LENGTH = 16428 FT. = 3.11 MILE

STATE OF ILLINOIS  
DEPARTMENT OF TRANSPORTATION  
DIVISION OF HIGHWAYS

SUBMITTED *December 15 20 11*

*James M. O'Brien*  
DEPUTY DIRECTOR OF HIGHWAYS, REGION 5 ENGINEER

*Feb 3 20 12*  
*John D. Baranzelli, P.E.*  
acting ENGINEER OF DESIGN AND ENVIRONMENT

*Feb 3 20 12*  
*William B. Flynn*  
acting DIRECTOR OF HIGHWAYS, CHIEF ENGINEER

**PRINTED BY THE AUTHORITY  
OF THE STATE OF ILLINOIS**