

STATE OF ILLINOIS
DEPARTMENT OF TRANSPORTATION
DIVISION OF HIGHWAYS

**PROPOSED
HIGHWAY PLANS**

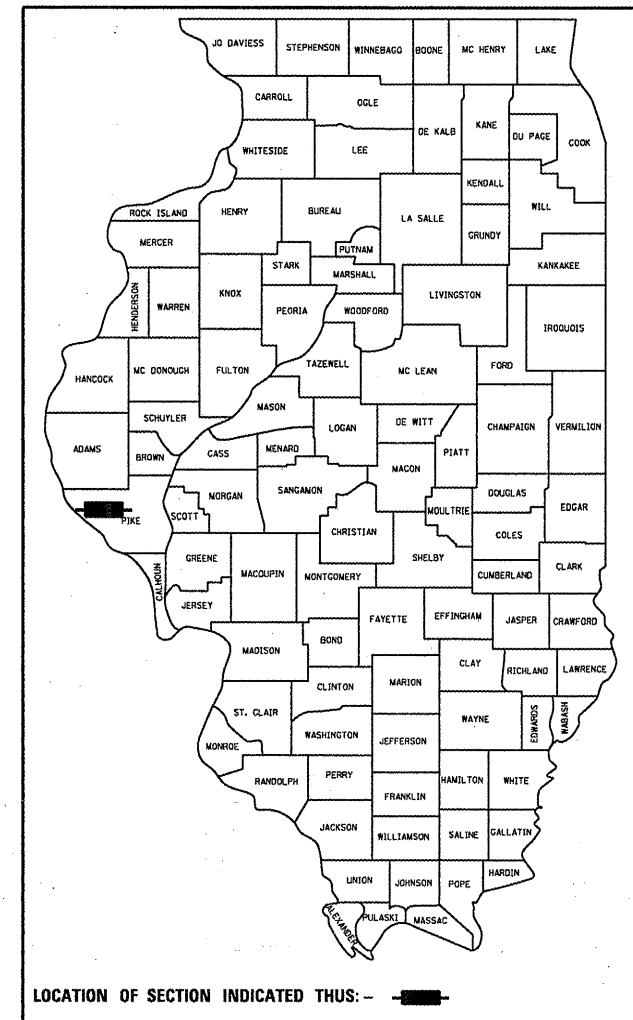
FAP ROUTE 304 (IL 96)
SECTION 2 DM

BUILDING DEMOLITION
PIKE COUNTY
C-96-019-12

F.A.P. RTE.	SECTION	COUNTY	TOTAL SHEETS	SHEET NO.
304	2 DM	PIKE	7	1
		ILLINOIS	CONTRACT NO. 72F09	

D-96-019-12

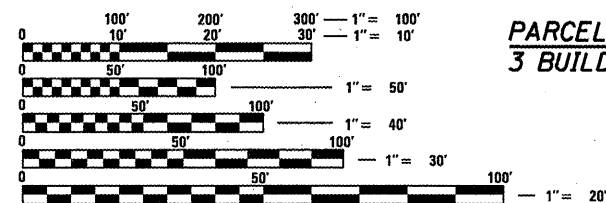
FOR INDEX OF SHEETS, SEE SHEET NO. 2



R 4 W

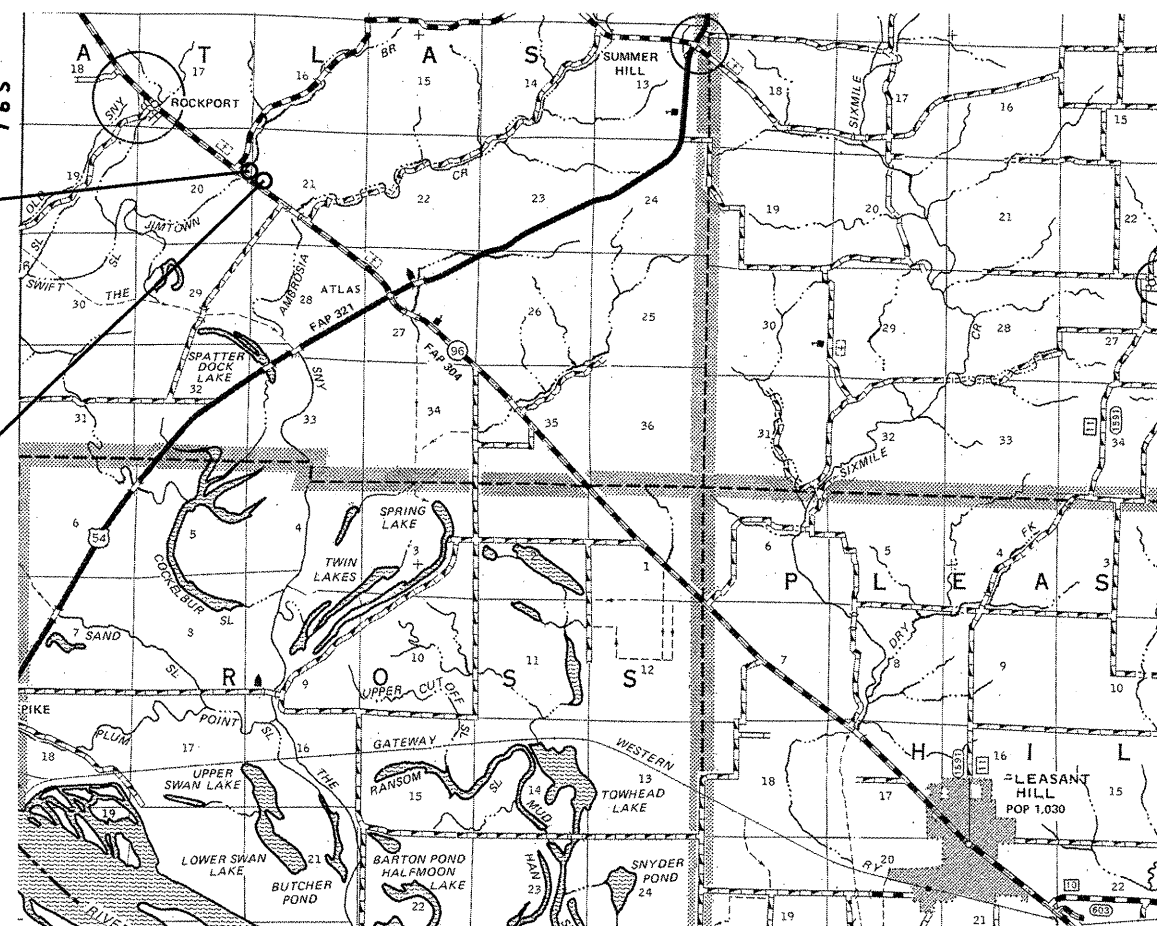
PARCEL NO 6025109
6 BUILDINGS TBR

PARCEL NO 6025108
3 BUILDINGS TBR



FULL SIZE PLANS HAVE BEEN PREPARED USING STANDARD ENGINEERING SCALES. REDUCED SIZED PLANS WILL NOT CONFORM TO STANDARD SCALES. IN MAKING MEASUREMENTS ON REDUCED PLANS, THE ABOVE SCALES MAY BE USED.

J.U.L.I.E.
JOINT UTILITY LOCATION INFORMATION FOR EXCAVATION
1-800-892-0123
OR 811



SENIOR TEAM ENGINEER: MARK DUST (217) 785-0597
TEAM ENGINEER: RENE CABRERA (217) 557-9062

CONTRACT NO. 72F09

STATE OF ILLINOIS
DEPARTMENT OF TRANSPORTATION
DIVISION OF HIGHWAYS

SUBMITTED December 14 20 11
Rosa Z. Smith
DEPUTY DIRECTOR OF HIGHWAYS, REGION ENGINEER

Feb 3 20 12
John D. Baranzelli P.E.
ENGINEER OF DESIGN AND ENVIRONMENT

Feb 3 20 12
William R. Fugler
DIRECTOR OF HIGHWAYS, CHIEF ENGINEER

**PRINTED BY THE AUTHORITY
OF THE STATE OF ILLINOIS**

GENERAL NOTES

- ① ANY REFERENCE TO A STANDARD IN THE PLANS SHALL BE INTERPRETED TO MEAN THE EDITION, AS INDICATED BY THE SUB-NUMBER LISTED IN THE INDEX OF SHEETS, OR THE COPY OF THE STANDARD INCLUDED IN THE PLANS.
- ② THE CONTRACTOR SHALL BE RESPONSIBLE FOR PROTECTING UTILITY PROPERTY FROM CONSTRUCTION OPERATIONS AS OUTLINED IN ARTICLE 107.31 OF THE STANDARD SPECIFICATIONS. THE JULIE NUMBER IS 800-892-0123. A MINIMUM OF FORTY-EIGHT HOURS ADVANCED NOTICE IS REQUIRED. ANY DAMAGE TO THE UNDERGROUND FACILITIES CAUSED BY THE CONTRACTOR SHALL BE REPAIRED TO THE SATISFACTION OF THE DEPARTMENT AT THE CONTRACTORS EXPENSE, INCLUDING TEMPORARY REPAIRS WHICH MAY BE REQUIRED TO KEEP THE FACILITY OPERATIONAL WHILE MATERIAL IS BEING OBTAINED TO MAKE PERMANENT REPAIRS.
- ③ SEEDING WILL NOT BE PERMITTED AT ANY TIME WHEN THE GROUND IS FROZEN, WET OR IN AN UNTILLABLE CONDITION. LOCATIONS TO BE SEEDED SHALL BE DETERMINED BY THE ENGINEER.
- ④ THE REMOVAL AND DISPOSAL OF THE CONCRETE PAD AT STA 789+41.00, 99.38' LT SHALL BE INCLUDED IN THE COST FOR SEALING ABANDONED WATER WELL.

COMMITMENTS

THE RESIDENT ENGINEER SHALL CONTACT STUDIES AND PLANS CONCERNING ANY MAJOR PLAN CHANGE. TO MAKE SURE NO PREVIOUS COMMENTS (NOT LISTED) WERE MADE AFFECTING THE DESIGN AND ALLOW AN IMPROVED DESIGN FOR FUTURE PROJECTS.

INDEX OF SHEETS

- 1 COVER SHEET
- 2 INDEX OF SHEETS & GENERAL NOTES
- 3 SUMMARY OF QUANTITIES
- 4 SCHEDULE OF QUANTITIES
- 5 - 6 BUILDING DEMOLITION, FLOOR & SEEDING PLAN SHEETS PARCEL NO. 6025109 (2)
- 7 BUILDING DEMOLITION, FLOOR & SEEDING PLAN SHEET PARCEL NO. 6025108

STANDARDS

- 000001-06 STANDARD SYMBOLS, ABBREVIATIONS, AND PATTERNS
- 701001-02 OFF ROAD OPERATIONS 2L, 2W, MORE THAN 15' AWAY
- 701006-03 OFF ROAD OPERATIONS 2L, 2W 15' TO 24' FROM PAVEMENT EDGE
- 701901-02 TRAFFIC CONTROL DEVICES

THE ITALICIZED TEXT DESCRIBING STANDARDS ARE GENERAL USES FOR THE APPLICATION SPECIFIED AND NOT LIMITED TO THEM.

DISTRICT SIX	
EXAMINED <u>11 / 28</u>	20 <u>11</u>
<i>William Boyd</i> OPERATIONS ENGINEER	
EXAMINED <u>Nov 29</u>	20 <u>11</u>
<i>James F. ...</i> PROJECT IMPLEMENTATION ENGINEER	
EXAMINED <u>December 6</u>	20 <u>11</u>
<i>2RML</i> PROGRAM DEVELOPMENT ENGINEER	

CODE NO.	ITEM	UNIT	TOTAL QUANTITY	CONSTR. CODE
				100% STATE
				0044 RURAL
20100110	TREE REMOVAL (6 TO 15 UNITS DIAMETER)	UNIT	168	168
20100210	TREE REMOVAL (OVER 15 UNITS DIAMETER)	UNIT	142	142
25000200	SEEDING, CLASS 2	ACRE	0.7	0.7
25000400	NITROGEN FERTILIZER NUTRIENT	POUND	63	63
25000500	PHOSPHORUS FERTILIZER NUTRIENT	POUND	63	63
25000600	POTASSIUM FERTILIZER NUTRIENT	POUND	63	63
25000700	AGRICULTURAL GROUND LIMESTONE	TON	1.5	1.5
25100115	MULCH, METHOD 2	ACRE	0.7	0.7
67100100	MOBILIZATION	L SUM	1	1
67201000	SEALING ABANDONED WATER WELLS	EACH	2	2
Z0007601	BUILDING REMOVAL NO. 1	L SUM	1	1
Z0007602	BUILDING REMOVAL NO. 2	L SUM	1	1
Z0007603	BUILDING REMOVAL NO. 3	L SUM	1	1
Z0007604	BUILDING REMOVAL NO. 4	L SUM	1	1

CODE NO.	ITEM	UNIT	TOTAL QUANTITY	CONSTR. CODE
				100% STATE
				0044 RURAL
Z0007605	BUILDING REMOVAL NO. 5	L SUM	1	1
Z0007606	BUILDING REMOVAL NO. 6	L SUM	1	1
Z0007607	BUILDING REMOVAL NO. 7	L SUM	1	1
Z0007608	BUILDING REMOVAL NO. 8	L SUM	1	1
Z0007609	BUILDING REMOVAL NO. 9	L SUM	1	1
Z0023800	FILLING EXISTING SEPTIC TANK	EACH	2	2
Z0049801	REMOVAL AND DISPOSAL OF FRIABLE ASBESTOS, BUILDING NO. 1	L SUM	1	1

• SPECIALTY ITEM

TREE REMOVAL (6 TO 15 UNITS DIAMETER)

LOCATION	QUANTITY (UNIT)
F. A. P. 384 (IL 96)	
PARCEL # 6025109	
STA. 785+92.00, 107.64' LT, 14' Dia	14
STA. 786+09.00, 160.19' LT, 12' Dia	12
STA. 786+23.00, 58.27' LT, 9' Dia	9
STA. 787+75.00, 132.63' LT, 15' Dia	15
STA. 787+90.00, 73.59' LT, 6 & 7' (x2) Dia	20
STA. 787+94.00, 88.03' LT, 14' Dia	14
STA. 788+09.00, 163.61' LT, 14' Dia	14
STA. 788+10.00, 159.24' LT, 14' Dia	14
STA. 788+16.00, 140.05' LT, 8' Dia	8
PARCEL # 6025108	
STA. 789+43.00, 53.00' LT 6, 9, 10(x2) & 13' Dia	48
PROJECT TOTAL	168

BUILDING REMOVAL NO.

LOCATION	QUANTITY (L SUM)
F. A. P. 384 (IL 96)	
PARCEL # 6025108	
*1 STA. 788+78.00, 88.76' LT	1
*2 STA. 788+98.00, 133.71' LT	1
*3 STA. 789+23.00, 133.71' LT	1
PARCEL # 6025109	
*4 STA. 786+95.00, 86.47' LT	1
*5 STA. 787+34.00, 125.43' LT	1
*6 STA. 787+34.00, 175.93' LT	1
*7 STA. 786+88.00, 160.47' LT	1
*8 STA. 785+92.00, 149.96' LT	1
*9 STA. 785+49.00, 171.10' LT	1
PROJECT TOTAL	9

TREE REMOVAL (OVER 15 UNITS DIAMETER)

LOCATION	QUANTITY (UNIT)
F. A. P. 384 (IL 96)	
PARCEL # 6025109	
STA. 786+17.00, 137.05' LT, 16' Dia	16
STA. 786+41.00, 73.49' LT, 37' Dia	37
STA. 787+28.00, 154.16' LT, 25' Dia	25
PARCEL # 6025108	
STA. 789+04.00, 53.290' LT 32' Dia	32
STA. 789+41.00, 78.21' LT 32' Dia	32
PROJECT TOTAL	142

SEALING ABANDONED WATER WELLS

LOCATION	QUANTITY (EACH)
F. A. P. 384 (IL 96)	
PARCEL # 6025109	
STA. 786+60.00, 104.60' LT	1
PARCEL # 6025108	
STA. 789.41.00, 110.10' LT	1
PROJECT TOTAL	2

REMOVAL AND DIPOSAL OF FRIABLE ASBESTOS, BUILDING NO 1

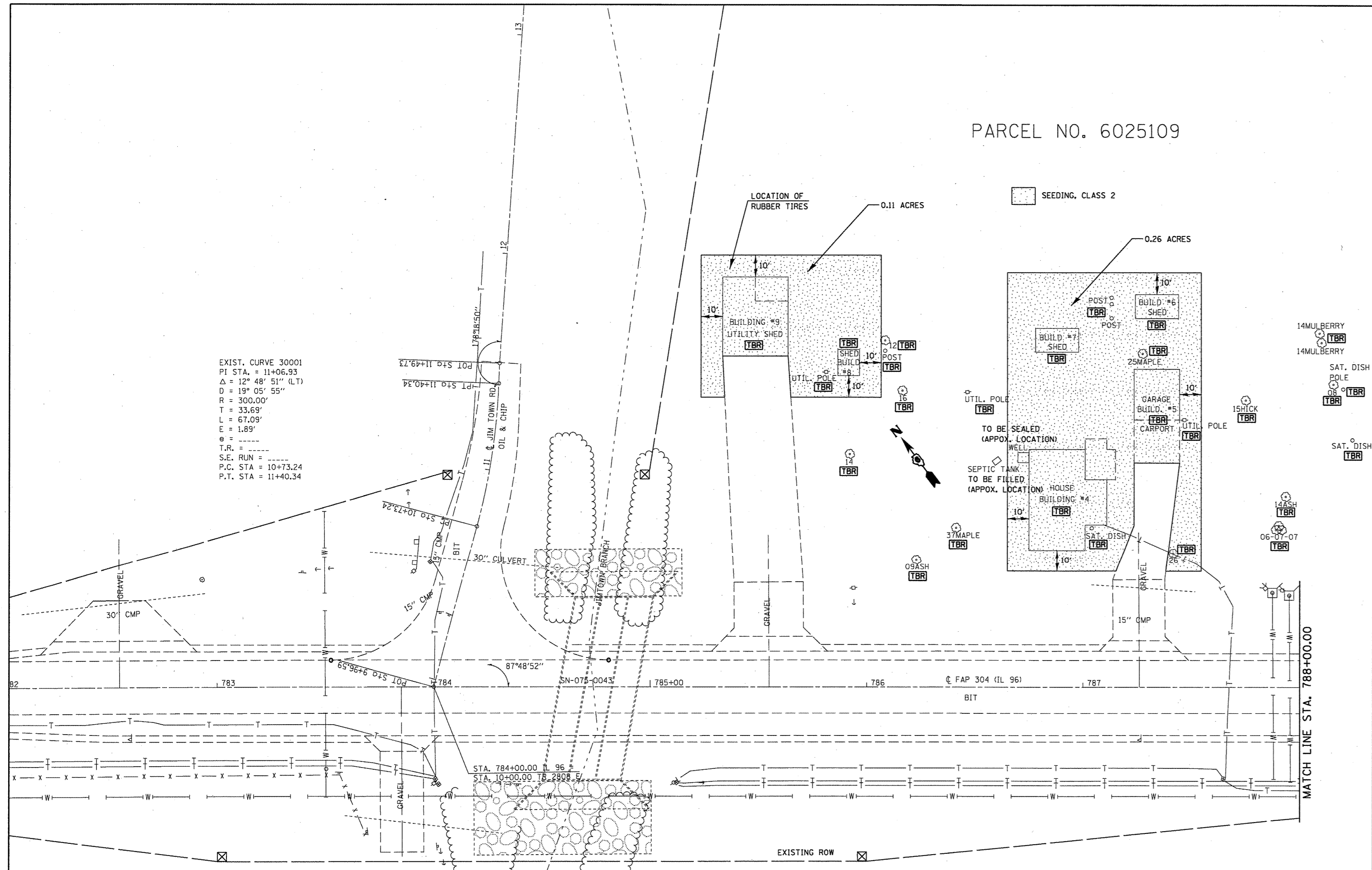
LOCATION	QUANTITY (L SUM)
F. A. P. 384 (IL 96)	
PARCEL # 6025109	
STA. 788+78.00, 88.76' LT	1
PROJECT TOTAL	1

FILLING EXISTING SEPTIC TANK

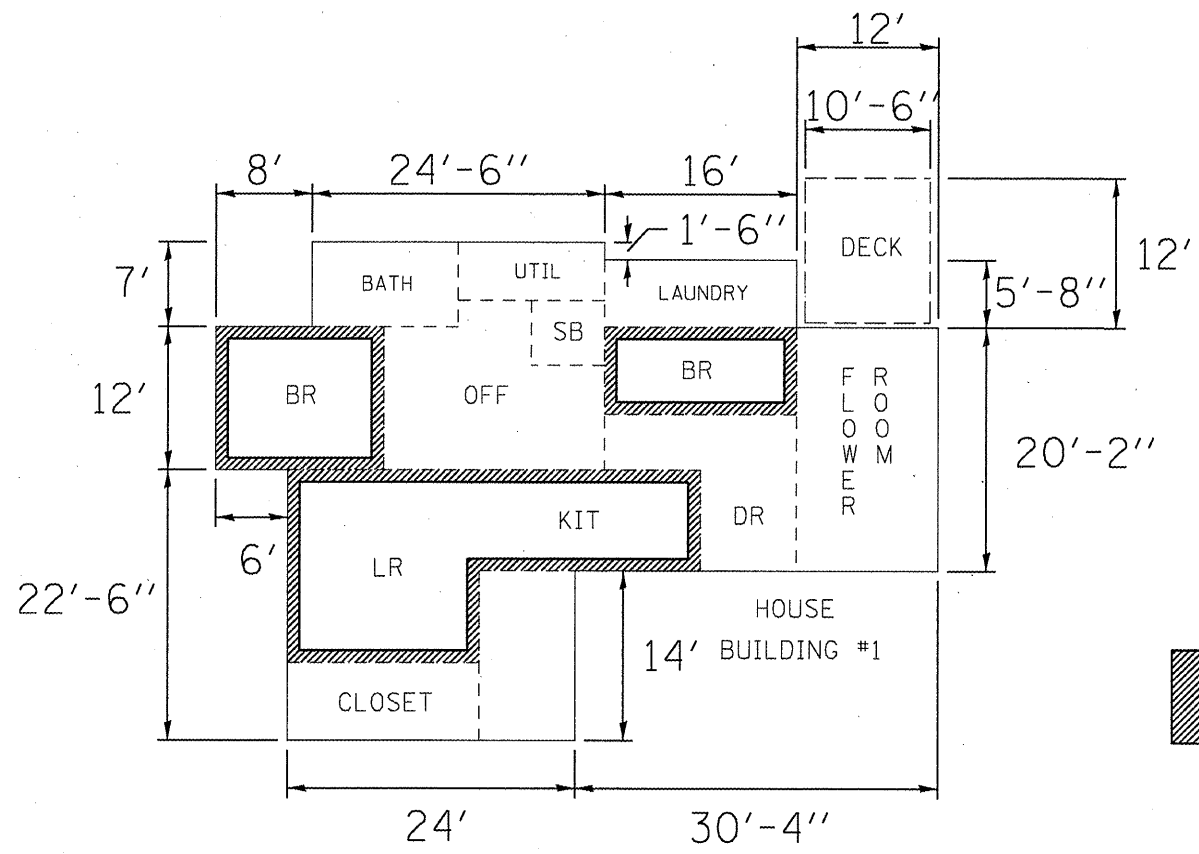
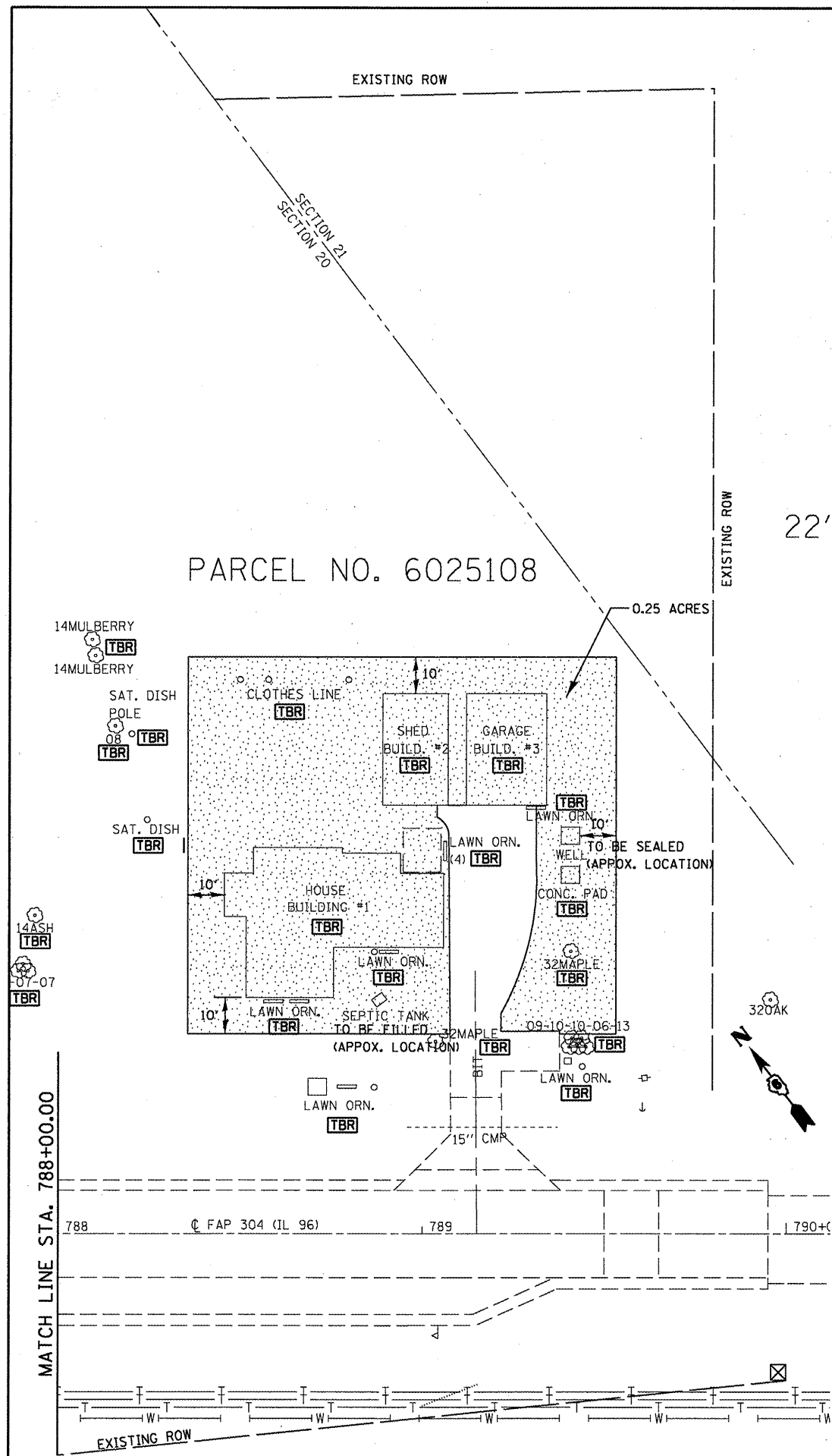
LOCATION	QUANTITY (EACH)
F. A. P. 384 (IL 96)	
PARCEL # 6025109	
STA. 786+73.00, 106.15' LT	1
PARCEL # 6025108	
STA. 786+73.00, 106.15' LT	1
PROJECT TOTAL	2

PARCEL NO. 6025109

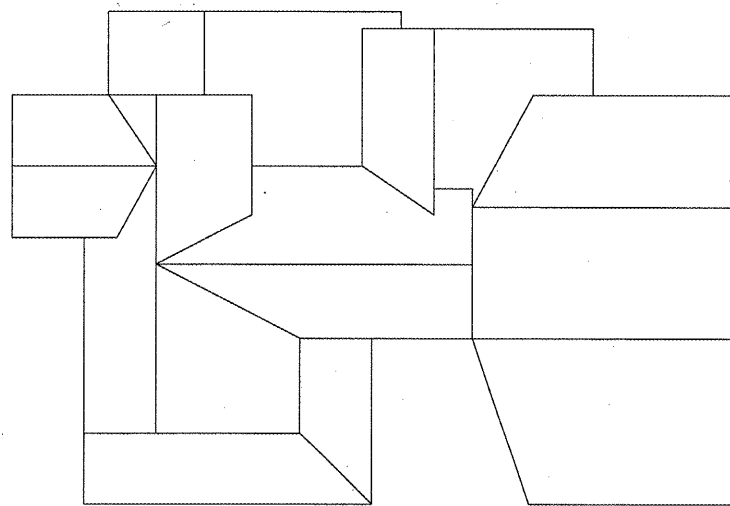
EXIST. CURVE 30001
 PI STA. = 11+06.93
 $\Delta = 12^\circ 48' 51''$ (LT)
 $D = 19^\circ 05' 55''$
 $R = 300.00'$
 $T = 33.69'$
 $L = 67.09'$
 $E = 1.89'$
 $\theta =$
 $T.R. =$
 $S.E. RUN =$
 $P.C. STA = 10+73.24$
 $P.T. STA = 11+40.34$



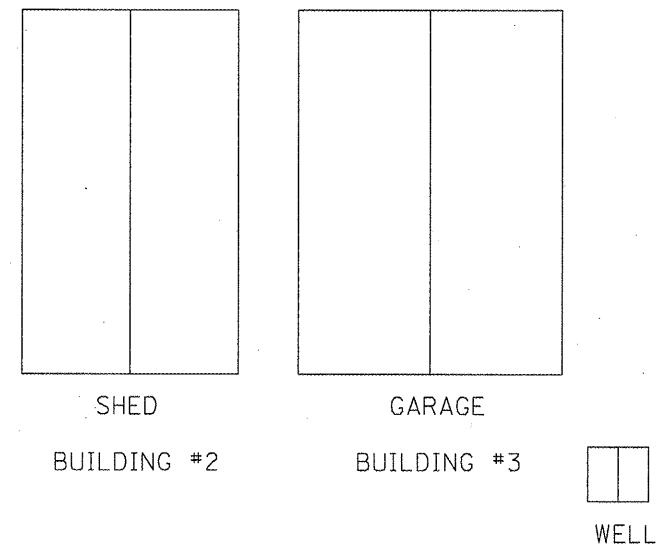
FILE NAME =	USER NAME = cox.jr	DESIGNED - JWC	REVISED -	STATE OF ILLINOIS DEPARTMENT OF TRANSPORTATION	PARCEL NO. 6025109 BUILDING DEMOLITION & SEEDING PLAN	F.A.P. RATE =	SECTION =	COUNTY =	TOTAL SHEET NO. =
DRAWN - JWC	REVISED -	304	2 DM			PIKE =	7		
PLLOT SCALE = 48.8888' / in.	CHECKED - RSC	REVISED -				CONTRACT NO. 72F09	5		
PLLOT DATE = Dec-12-2011 04:17:15PM	DATE =	REVISED -				ILLINOIS FED. AID PROJECT			



FLOOR PLANS



ROOF PLANS



ASBESTOS - CONTAINING MATERIAL TO BE REMOVED

MATERIAL DESCRIPTION	LOCATION	FRIABLE	ASBESTOS TYPE	ASBESTOS %	QUANTITY
LAYERED PLASTER	KITCHEN, BED ROOM 1, BED ROOM 2, & LIVING ROOM	YES	CHRYSTILE	4%	1200 SQ FT

FILE NAME =	USER NAME = coxjw	DESIGNED - JWC	REVISED -
al\p\work\p\p\dot\coxjw\8285545\0672f09-shc-blldemo1.dgn		DRAWN - JWC	REVISED -
		CHECKED - RSC	REVISED -
		DATE -	REVISED -

**STATE OF ILLINOIS
DEPARTMENT OF TRANSPORTATION**

**PARCEL NO. 6025108
BUILDING DEMOLITION, SEEDING PLAN & MATERIAL TABLE**

SCALE: 20 SHEET 1 OF 1 SHEETS STA. TO STA.

F.A.P. RTE. 304	SECTION 2 DM	COUNTY PIKE	TOTAL SHEETS 7	SHEET NO. 7
CONTRACT NO. 72F09				
[ILLINOIS] FED. AID PROJECT				