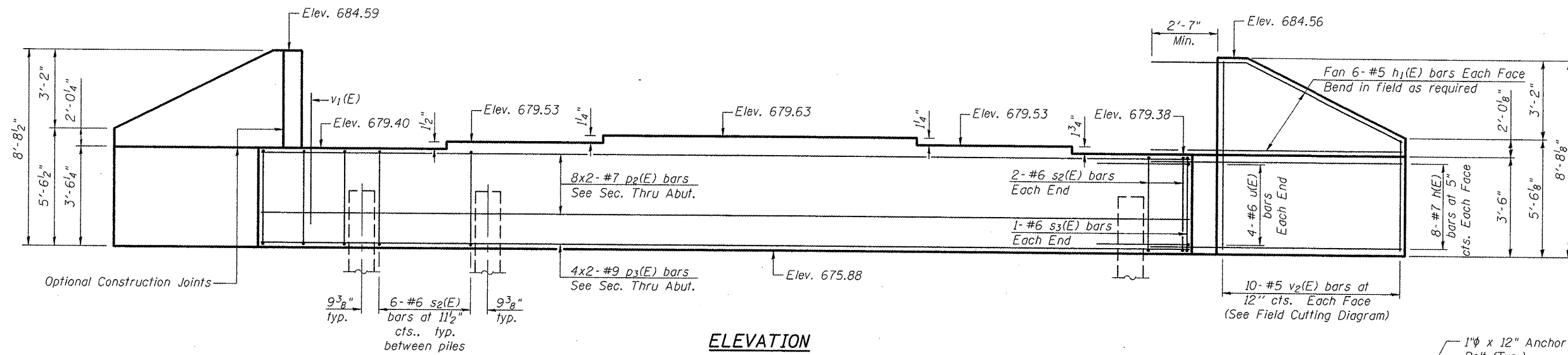
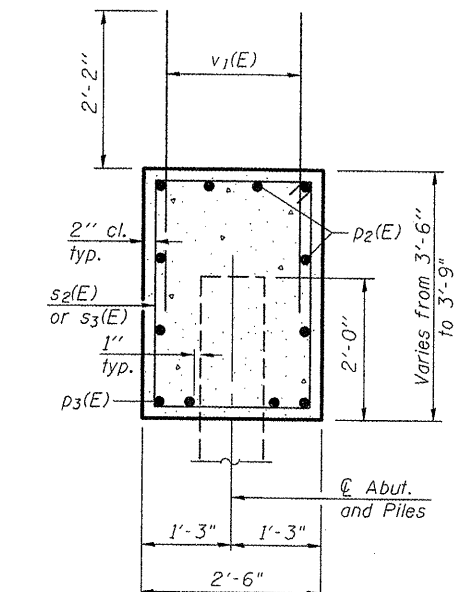


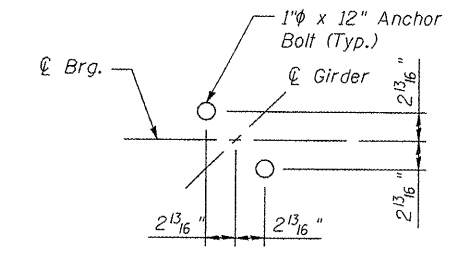
Notes:
 Four steps monolithically with cap.
 Space reinforcement to miss anchor bolts.



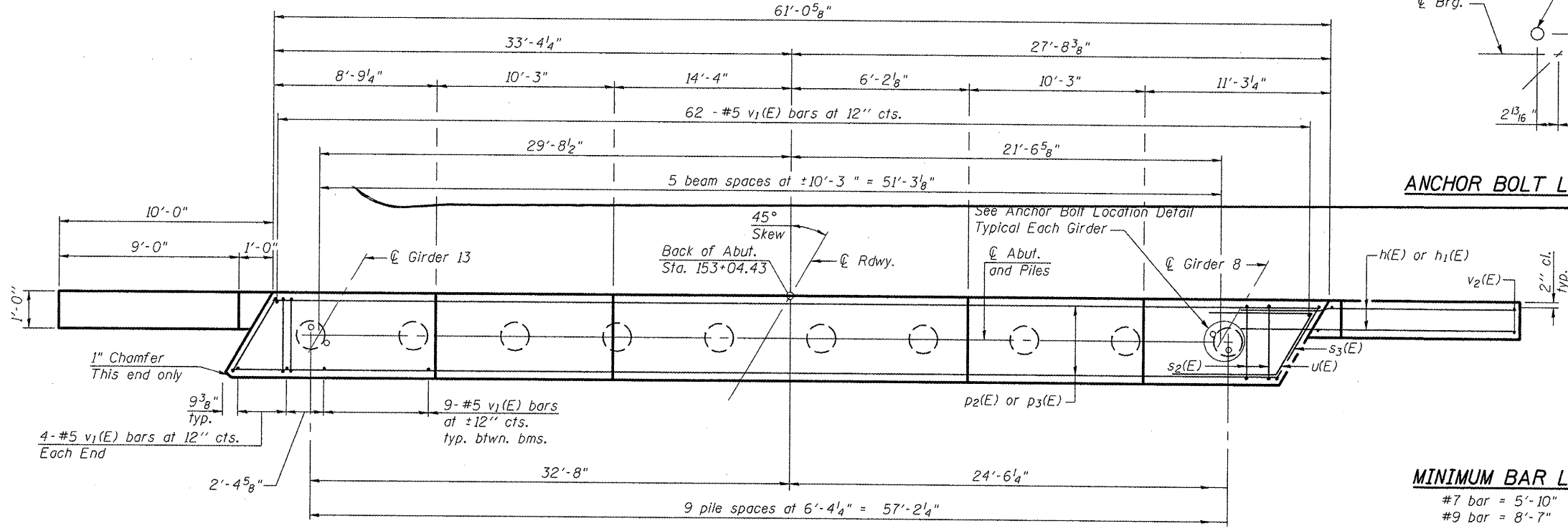
ELEVATION



SEC. THRU ABUT.



ANCHOR BOLT LOCATION DETAIL



MINIMUM BAR LAP

#7 bar = 5'-10"
 #9 bar = 8'-7"

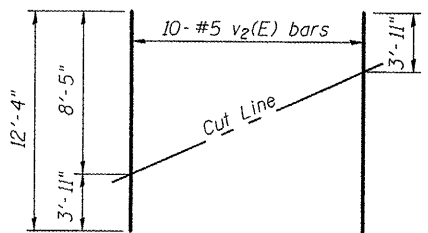
BILL OF MATERIAL

Bar	No.	Size	Length	Shape
h(E)	32	#7	14'-3"	—
h1(E)	24	#5	14'-3"	—
p2(E)	16	#7	33'-4"	—
p3(E)	8	#9	34'-9"	—
s2(E)	58	#6	12'-0"	□
s3(E)	2	#6	13'-8"	□
u(E)	8	#6	13'-0"	┌
v1(E)	115	#5	4'-4"	—
v2(E)	20	#5	12'-4"	—
Structure Excavation		Cu. Yd.	43	
Concrete Structures		Cu. Yd.	25.6	
Reinforcement Bars, Epoxy Coated		Pound	5,340	
Furnishing Metal Shell Piles 14" X 0.312"		Foot	693	
Driving Piles		Foot	693	
Test Pile Metal Shells		Each	1	

For details of piles see sheet 29 of 35.

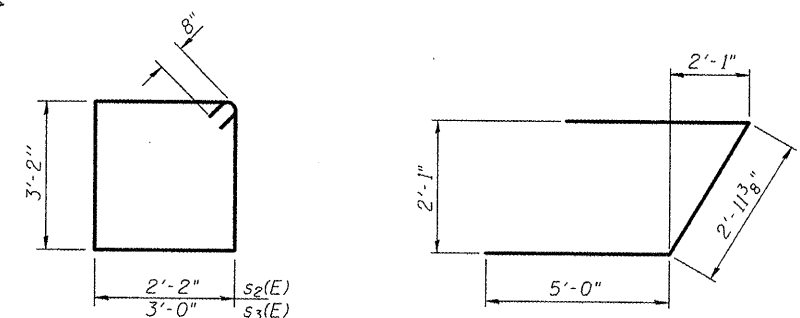
PILE DATA

Type: Metal Shell - 14"φ with 0.312" walls
 Nominal Required Bearing: 462 Kips/Pile
 Factored Resistance Available: 254 Kips/Pile
 Est. Length: 77 Ft./Pile
 No. Production Piles: 9
 No. Test Piles: 1



FIELD CUTTING DIAGRAM

Order v2(E) full length. Cut as shown and use remainder of bars in opposite face.



BARS s2(E) & s3(E)

BAR u(E)

PLAN