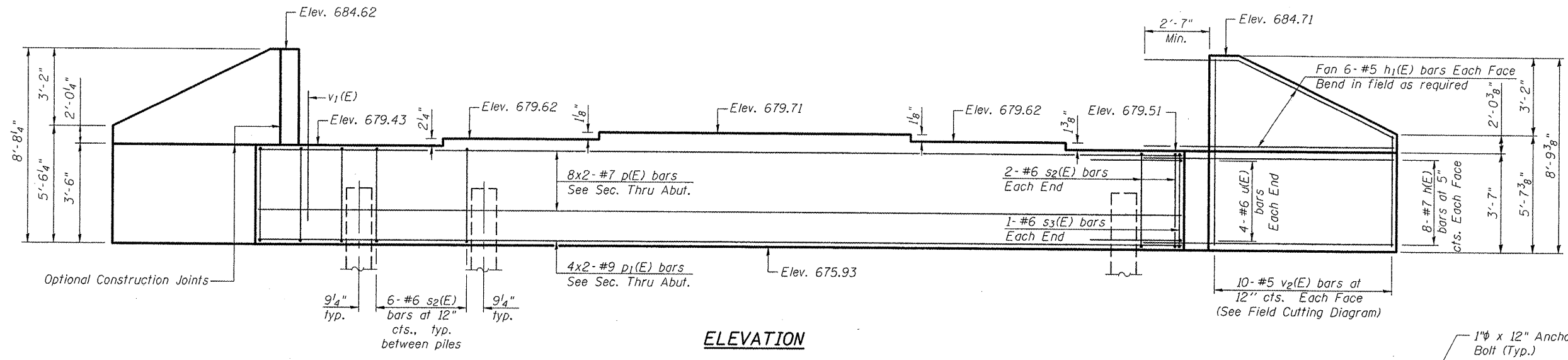
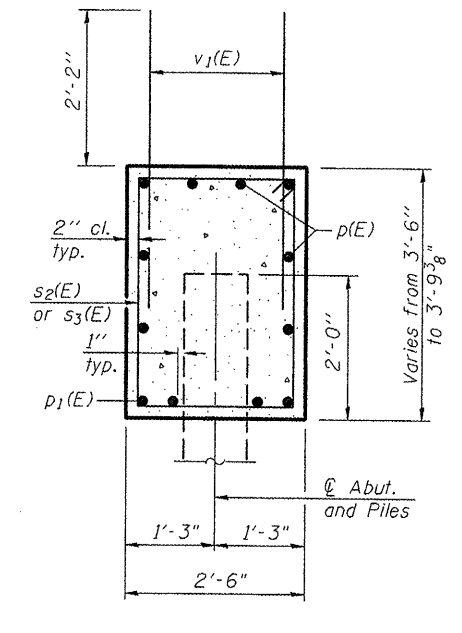


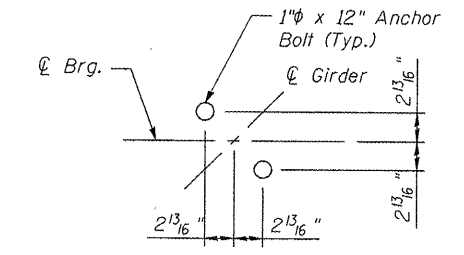
Notes:  
 Pour steps monolithically with cap.  
 Space reinforcement to miss anchor bolts.



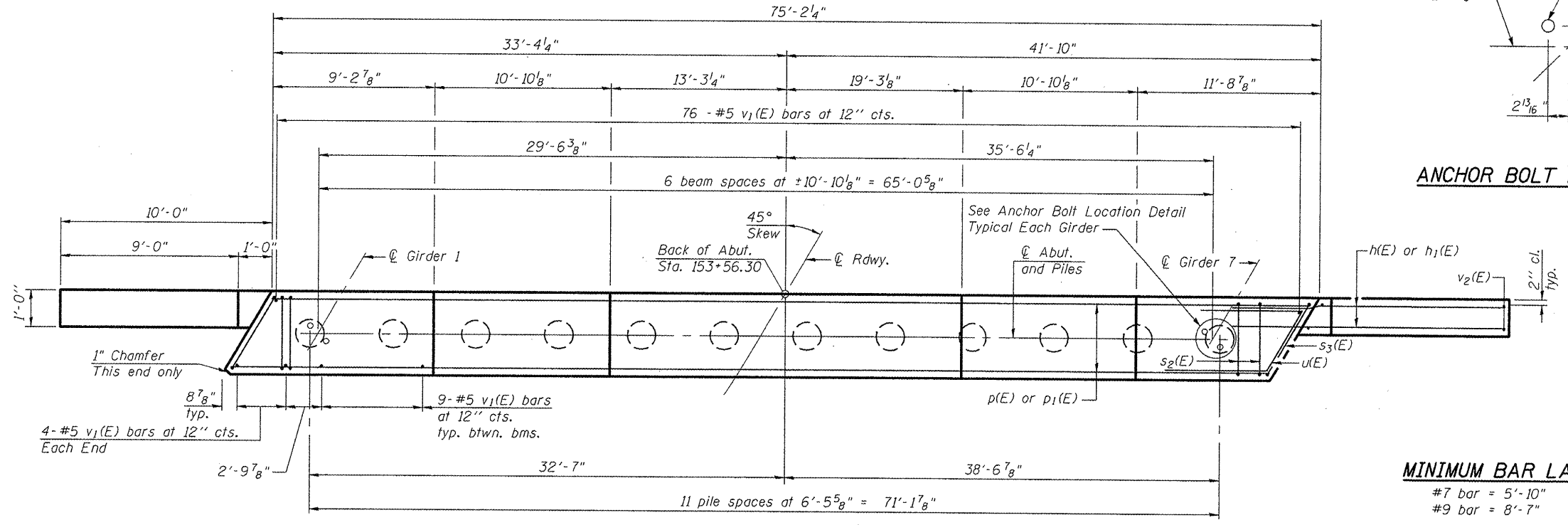
**ELEVATION**



**SEC. THRU ABUT.**



**ANCHOR BOLT LOCATION DETAIL**



**PLAN**

**MINIMUM BAR LAP**  
 #7 bar = 5'-10"  
 #9 bar = 8'-7"

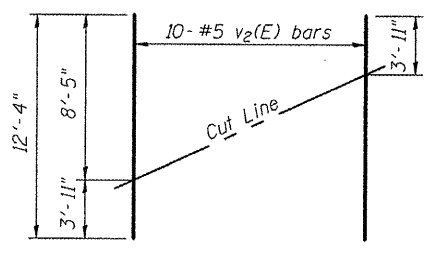
**BILL OF MATERIAL**

Bar	No.	Size	Length	Shape
h(E)	32	#7	14'-3"	
h1(E)	24	#5	14'-3"	
p(E)	16	#7	40'-5"	
p1(E)	8	#9	41'-10"	
s2(E)	70	#6	12'-0"	
s3(E)	2	#6	13'-8"	
u(E)	8	#6	13'-0"	
v1(E)	138	#5	4'-4"	
v2(E)	20	#5	12'-4"	
Structure Excavation		Cu. Yd.	47	
Concrete Structures		Cu. Yd.	30.7	
Reinforcement Bars, Epoxy Coated		Pound	6,090	
Furnishing Metal Shell Piles 14" X 0.312"		Foot	957	
Driving Piles		Foot	957	
Test Pile Metal Shells		Each	1	

For details of piles see sheet 29 of 35.

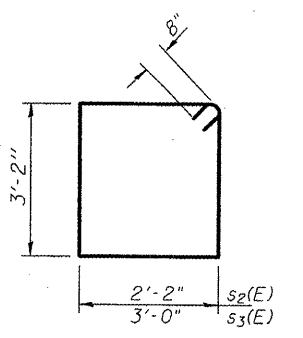
**PILE DATA**

Type: Metal Shell - 14"φ with 0.312" walls  
 Nominal Required Bearing: 480 Kips/Pile  
 Factored Resistance Available: 264 Kips/Pile  
 Est. Length: 87 Ft./Pile  
 No. Production Piles: 11  
 No. Test Piles: 1

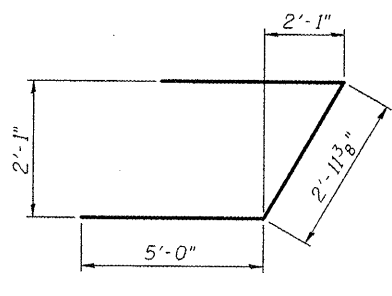


**FIELD CUTTING DIAGRAM**

Order v2(E) full length. Cut as shown and use remainder of bars in opposite face.



**BARS s2(E) & s3(E)**



**BAR u(E)**

FILE NAME *	USER NAME * seb	DESIGNED - KTH	REVISED -
P:\07f1es\070286\Phase2\Bridg Plans\26_S_ABUT_0000.dgn		CHECKED - ADL	REVISED -
		DRAWN - BGJ	REVISED -
		CHECKED - RJP	REVISED -
PLOT SCALE * 0.20000 ' / IN.			
PLOT DATE * 12/7/2011			

**STATE OF ILLINOIS  
 DEPARTMENT OF TRANSPORTATION**

**SOUTH ABUTMENT  
 S.N. 055-0080 (NB)**

SHEET NO. 26 OF 35 SHEETS

F.A.P. RTE.	SECTION	COUNTY	TOTAL SHEETS	SHEET NO.
310	(38B-2)BR	MCDONOUGH	130	83
			CONTRACT NO. 68691	

ILLINOIS FED. AID PROJECT  
 Klinaner & Associates P.C.