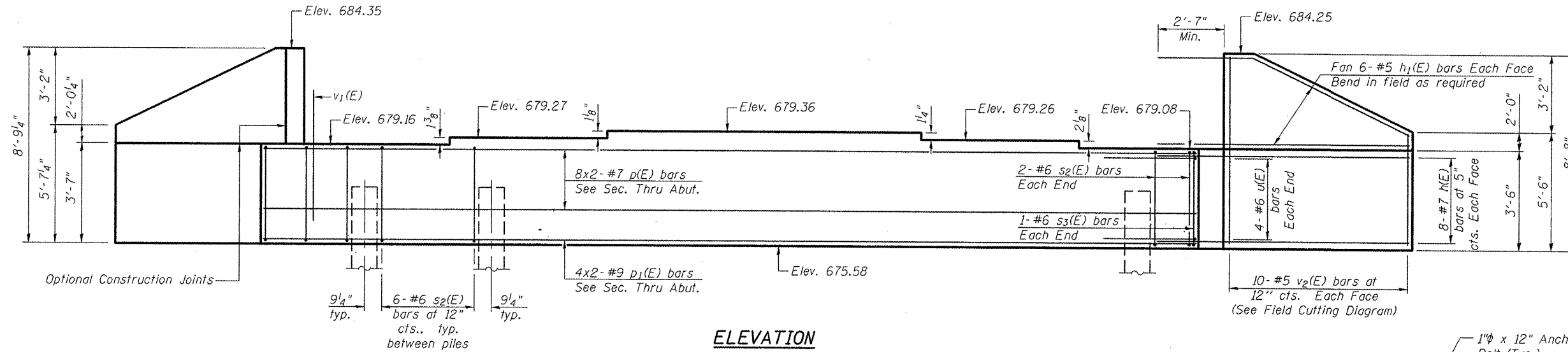
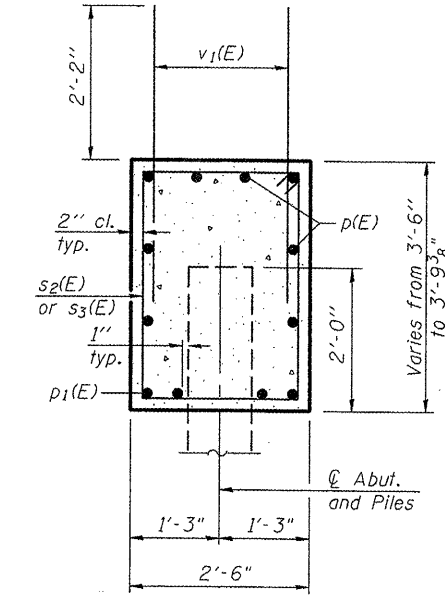


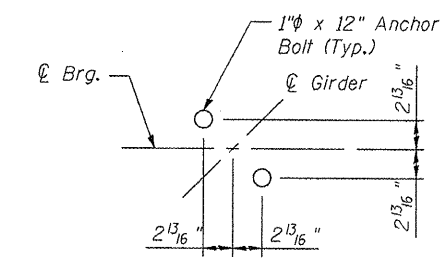
Notes:
 Pour steps monolithically with cap.
 Space reinforcement to miss anchor bolts.



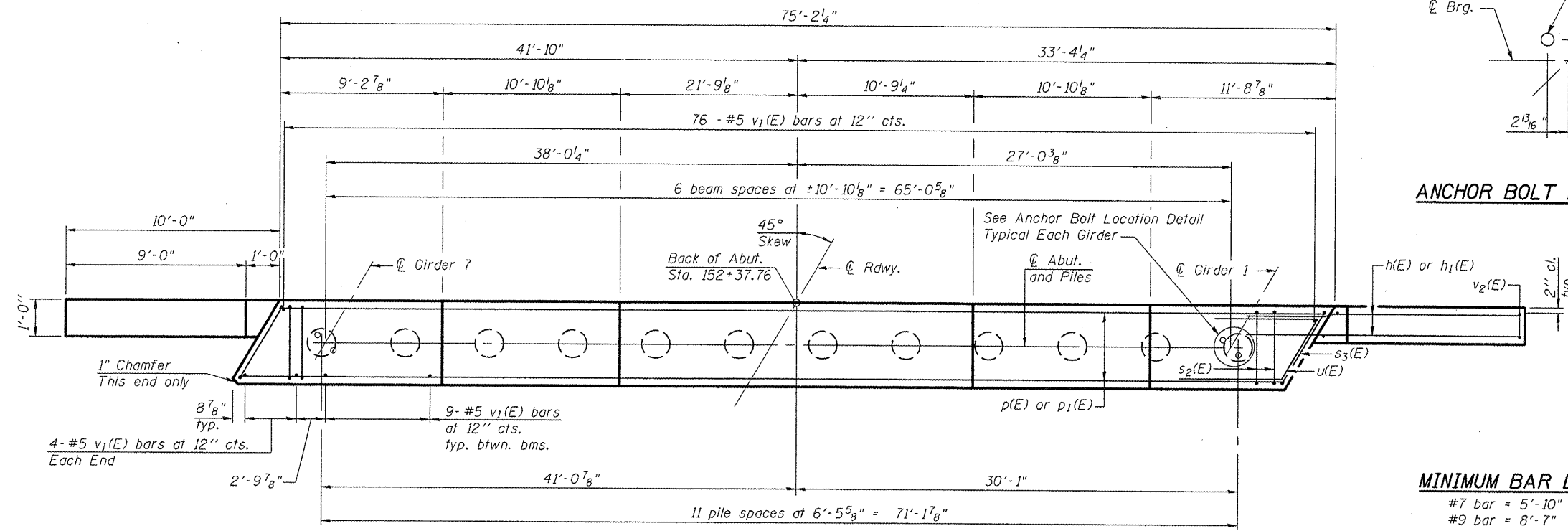
ELEVATION



SEC. THRU ABUT.



ANCHOR BOLT LOCATION DETAIL



PLAN

MINIMUM BAR LAP
 #7 bar = 5'-10"
 #9 bar = 8'-7"

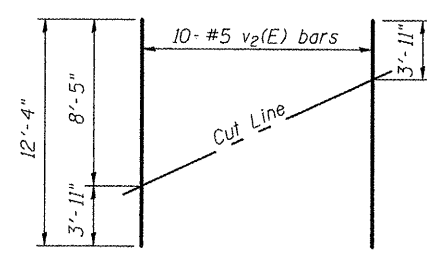
BILL OF MATERIAL

Bar	No.	Size	Length	Shape
h(E)	32	#7	14'-3"	
h1(E)	24	#5	14'-3"	
p(E)	16	#7	40'-5"	
p1(E)	8	#9	41'-10"	
s2(E)	70	#6	12'-0"	
s3(E)	2	#6	13'-8"	
u(E)	8	#6	13'-0"	
v1(E)	138	#5	4'-4"	
v2(E)	20	#5	12'-4"	
Structure Excavation		Cu. Yd.	47	
Concrete Structures		Cu. Yd.	30.7	
Reinforcement Bars, Epoxy Coated		Pound	6,090	
Furnishing Metal Shell Piles 14" X 0.312"		Foot	352	
Driving Piles		Foot	352	
Test Pile Metal Shells		Each	1	

For details of piles see sheet 29 of 35.

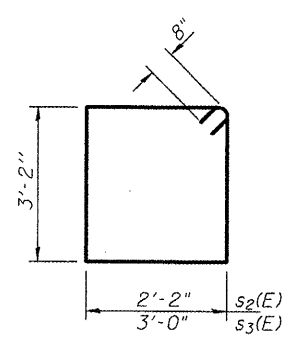
PILE DATA

Type: Metal Shell - 14"φ with 0.312" walls
 Nominal Required Bearing: 439 Kips/Pile
 Factored Resistance Available: 242 Kips/Pile
 Est. Length: 32 Ft./Pile
 No. Production Piles: 11
 No. Test Piles: 1

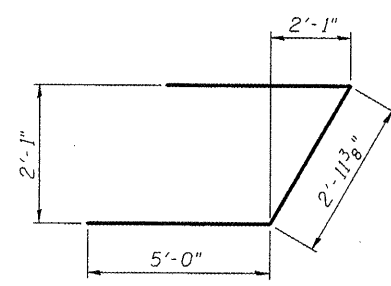


FIELD CUTTING DIAGRAM

Order v2(E) full length. Cut as shown and use remainder of bars in opposite face.



BARS s2(E) & s3(E)



BAR u(E)

**STATE OF ILLINOIS
 DEPARTMENT OF TRANSPORTATION**

**NORTH ABUTMENT
 S.N. 055-0080 (NB)**

SHEET NO. 25 OF 35 SHEETS

F.A.P. RTE.	SECTION	COUNTY	TOTAL SHEETS	SHEET NO.
310	(38B-2)BR	MCDONOUGH	130	82

CONTRACT NO. 68691

ILLINOIS FED. AID PROJECT
 Kliner & Associates P.C.

FILE NAME	USER NAME	DESIGNED	REVISIONS
P:\07Files\070286\Phase2\Bridg Plans\25_N.ABUT_0080.dgn	seb	KTH	
		ADL	
		BGJ	
		RJP	