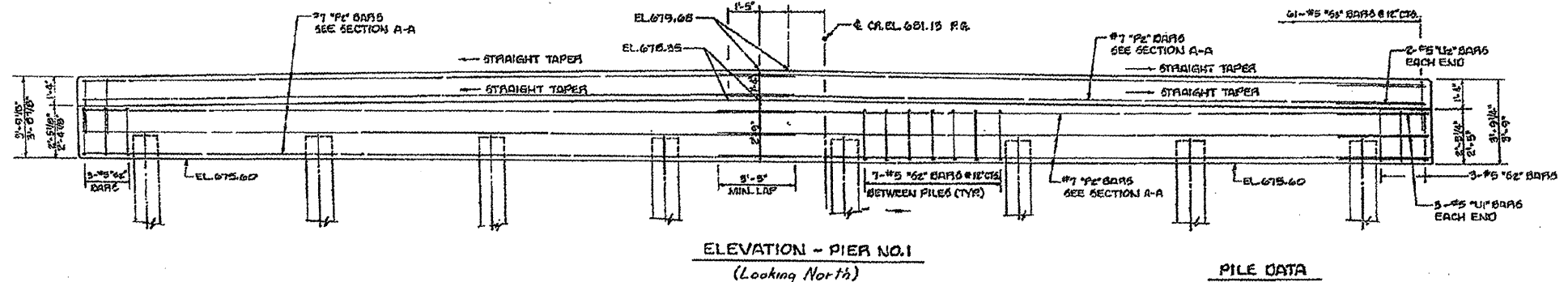


\* JOINT SHALL BE PACKED WITH A HEAVY OIL LUBE OF 2:1 SAND & P.C. SANDFILL. IF DIMENSIONAL TOLERANCE PLUS OR MINUS TO ACCOMMODATE TOLERANCE AT BEAR LENGTH.  
 \*\* DOWEL BARS TO BE GRADUATED AFTER BEARS ARE IN PLACE AND ALLOWED TO CURE (MIN. 24 HOURS) PRIOR TO GRADING THE CHEEK WAYS.

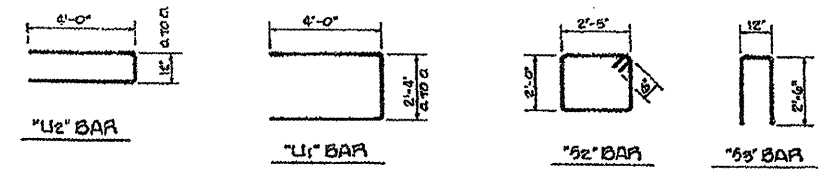


**PILE DATA**

|             |                  |
|-------------|------------------|
| TYPE        | PRECAST CONCRETE |
| CAPACITY    | 45 TONS          |
| EST. LENGTH | 34 FT.           |
| NUMBER      | 8 EACH           |

**BILL OF MATERIAL - PIER NO.1**

| BAR                                       | NO. | SIZE | LENGTH | SHAPE |
|---|-----|------|--------|-------|
| PE  | 22  | #7   | 31'-9" |       |
| SE  | 55  | #5   | 9'-10" | □     |
| SD  | 61  | #3   | 9'-0"  | □     |
| LI  | 6   | #5   | 10'-8" | □     |
| LI2                                       | 4   | #5   | 9'-0"  | □     |
| CLASS 12 CONCRETE = 19.9 CU YD            |     |      |        |       |
| PRECAST CONCRETE BARS = 2470 LBS          |     |      |        |       |
| PRECAST CONCRETE PILES, 18" = 272 LBS FT. |     |      |        |       |



**PIER NO.1 DETAILS**

|               |                  |                              |
|---------------|------------------|------------------------------|
| FR. RTE. 17   | SEC. 28 B-2      | AUSTIN ENGINEERING CO., INC. |
| SOUTH EDWARDS | MCDONOUGH COUNTY | CIVIL ENGINEERS              |
| DATE          | NOV 11 2004      | SHEET 07                     |