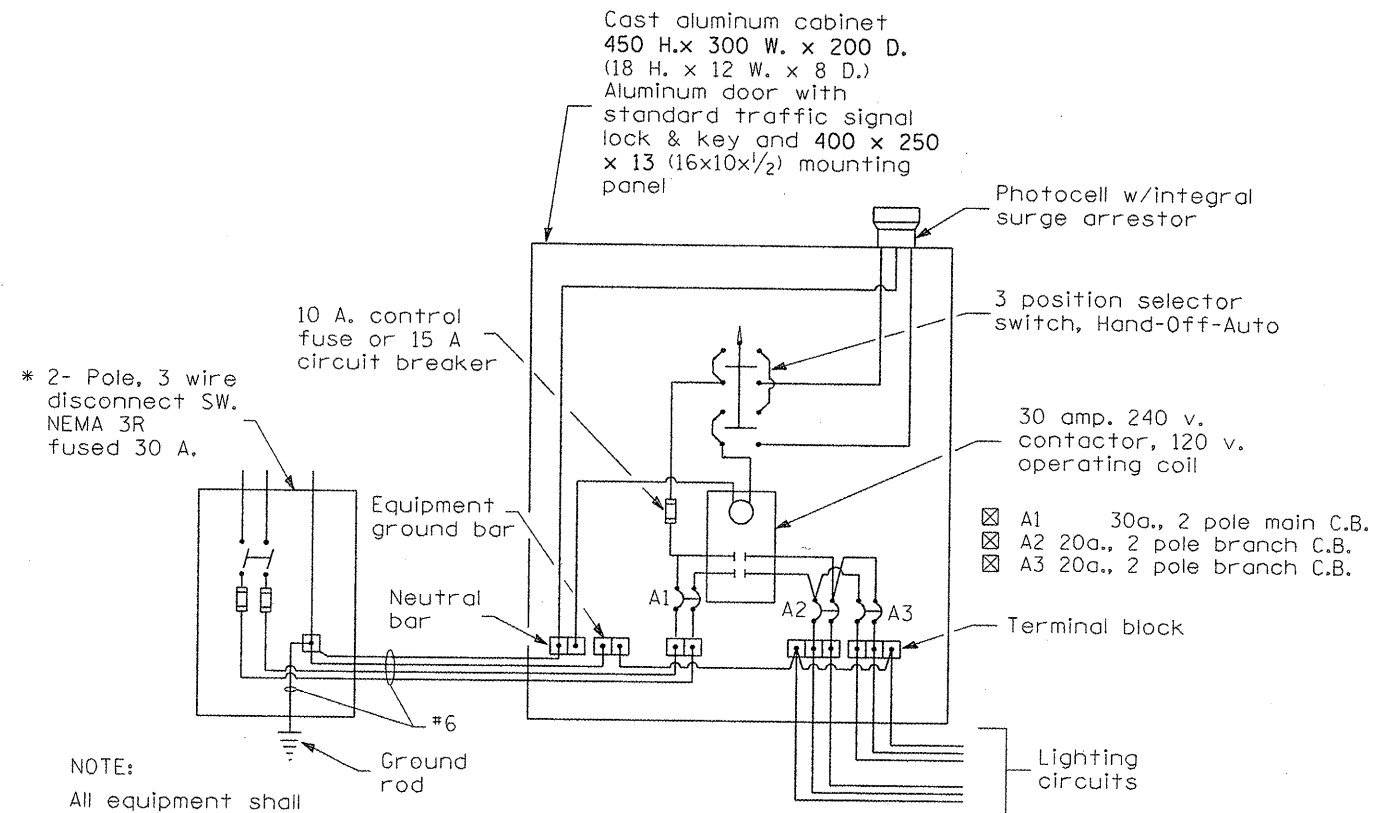


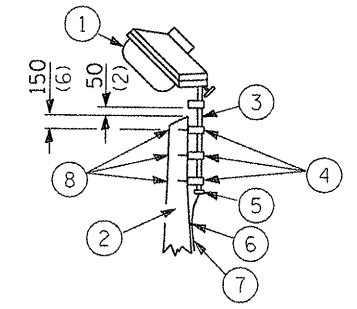
SERVICE INSTALLATION



NOTE:
All equipment shall be U.L. approved.
* 30 A. or 60 A., dependent upon utility company requirements.

WIRING DIAGRAM

NOTE:
Luminaire(s) shall have a 2-pole inline weatherproof quick disconnect fuse holder.
Luminaire(s) shall be oriented and the mounting angle adjusted as recommended by the Engineer.
Connect luminaire equipment ground to ACSR messenger.



- ① Luminaire 250w HPS
- ② Wood pole, class 3 or better
- ③ 63 (2 1/2) Galv. steel conduit
- ④ Single offset pole band
- ⑤ Conduit bushing
- ⑥ Cable clamps on 600 (24) centers
- ⑦ 2/c #12 Type USE cable
- ⑧ 16 (5/8) hot dipped galvanized bolt with flat washer & locknut (3 req'd)

POLE LENGTH	DEPTH IN GROUND
19.8 m (65')	3.6 m (12')
18.0 m (60')	3.0 m (10')
16.8 m (55')	2.7 m (9')
16.0 m (50')	2.4 m (8')
13.7 m (45')	2.1 m (7')
12.0 m (40')	2.0 m (6.5')
10.7 m (35')	1.8 m (6')
9.0 m (30')	1.7 m (5.5')