

ILLINOIS DEPARTMENT OF TRANSPORTATION  
LUMINAIRE PERFORMANCE TABLE

GIVEN CONDITIONS

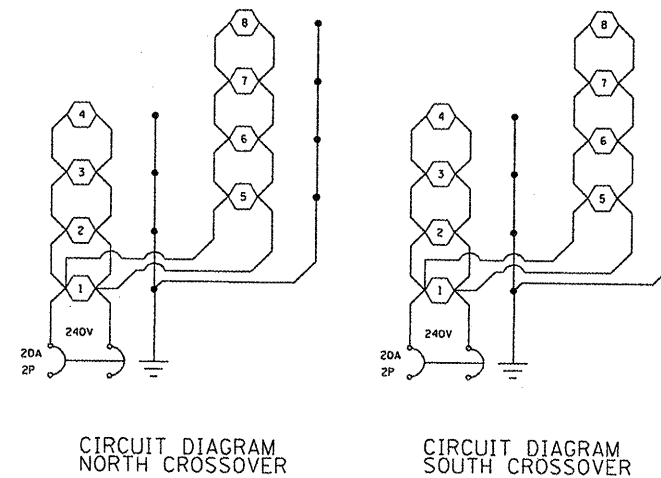
ROADWAY DATA:	Pavement Width	24 FT
	Number of Lanes	2
	Median Width	44 FT
	IES Surface Classification	R3
	Q-Zero Value	.07
LIGHT POLE DATA:	Mounting Height	42 FT
	Mast Arm Length	0 FT
	Pole Set-Back From Edge Of Pavement	30 FT
LUMINAIRE DATA:	Lamp Type	HPS
	Lamp Lumens	28000
	IES Vertical Distribution	L
	IES Control of Distribution	NC
	IES Lateral Distribution	4
	Total Light Loss Factor	0.684
LAYOUT DATA:	Spacing	240 FT
	Configuration	Opposite
	Luminaire Overhang Over Edge Of Pavement Lane	-30 FT

NOTE: Variations from the above specified IES distribution pattern may be requested and acceptance on variations will be subject to review by the Engineer based on how well the performance requirements are met.

PERFORMANCE REQUIREMENTS

NOTE: These performance requirements shall be the minimum acceptable standards of photometric performance for the luminaire, based on the given conditions listed.

ILLUMINATION:	Average Horizontal Illumination, ( $E_{AVE}$ )	6.0 Lux
	Uniformity Ratio, ( $E_{AVE}/E_{MIN}$ )	3.0
	Average Luminance: ( $L_{AVE}$ )	0.4 Cd/m <sup>2</sup>
	Uniformity Ratios: ( $L_{AVE}/L_{MIN}$ )	3.5
	( $L_{MAX}/L_{MIN}$ )	6.0
	Maximum Veiling	
	Luminance Ratio: ( $L_V/L_{AVE}$ )	



TEMPORARY LIGHTING GENERAL NOTES

- CONTRACTOR SHALL BE RESPONSIBLE TO COORDINATE ELECTRICAL WORK WITH OTHER TRADES.
- CONTRACTOR SHALL INSTALL LIGHT POLES AT THE LOCATIONS INDICATED ON THE PLANS, MAINTAINING ADEQUATE CLEARANCE FROM OVERHEAD UTILITY LINES. CONTRACTOR SHALL BE RESPONSIBLE TO VERIFY CLEARANCES PER THE NATIONAL ELECTRICAL SAFETY CODE AND THE REQUIREMENTS OF THE UTILITY COMPANIES. THE LOCATION OF BURIED AND ABOVE GROUND UTILITIES SHOWN ARE APPROXIMATE AND ARE SHOWN FOR INFORMATION ONLY. REROUTING, DISCONNECTION, RELOCATION, PROTECTION, ETC. OF ANY UTILITIES SHALL BE COORDINATED BETWEEN THE CONTRACTOR, UTILITY COMPANY, AND OWNER. THE CONTRACTOR SHALL VERIFY THE EXACT LOCATION OF ALL UNDERGROUND UTILITIES PRIOR TO CONSTRUCTION.
- THE CONTRACTOR IS RESPONSIBLE FOR UNCOVERING OR HAND DIGGING AROUND UTILITIES AS NECESSARY.
- THE CONTRACTOR SHALL BE RESPONSIBLE FOR MAINTAINING THE PROPOSED LIGHTING SYSTEM UNTIL THE CROSSOVERS ARE REMOVED AND THE LIGHTING SYSTEM IS NO LONGER NEEDED.
- POLE HEIGHT SHALL BE INCREASED AS NECESSARY TO MAINTAIN REQUIRED CLEARANCE OF AERIAL CABLE OVER THE ROADWAY.
- THE CONTRACTOR SHALL FURNISH AND INSTALL GUY WIRES AND ANCHORS AS REQUIRED TO THE SATISFACTION OF THE ENGINEER.
- TEMPORARY WOOD POLES SHALL BE SET BACK A MINIMUM OF 30 FEET FROM THE EXISTING EDGE OF PAVEMENT. POLES SHALL BE LOCATED OUTSIDE THE CLEAR ZONE OR A MINIMUM OF FIVE FEET BEHIND GUARDRAIL OR TEMPORARY BARRIER.
- THE COST OF THE WORK DESCRIBED ABOVE SHALL BE INCLUDED IN THE BID PRICE FOR TEMPORARY LIGHTING SYSTEM.