

SW 1/4 SECTION 6, T6N, R2W, 4TH PM
MACOMB TWP.

BRUCE A ENGNELL
EXIST. CURVE P001
PI STA. = 18+98.58
 $\Delta = 55^\circ 12' 23''$ (RT)
D = 45' 50" 12"
T = 65.36'
L = 120.44'
E = 16.06'
e = N.C.
P.C. STA. = 18+33.23
P.T. STA. = 19+53.67

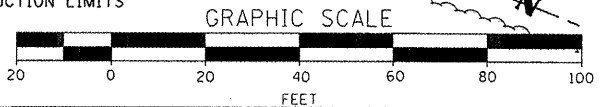
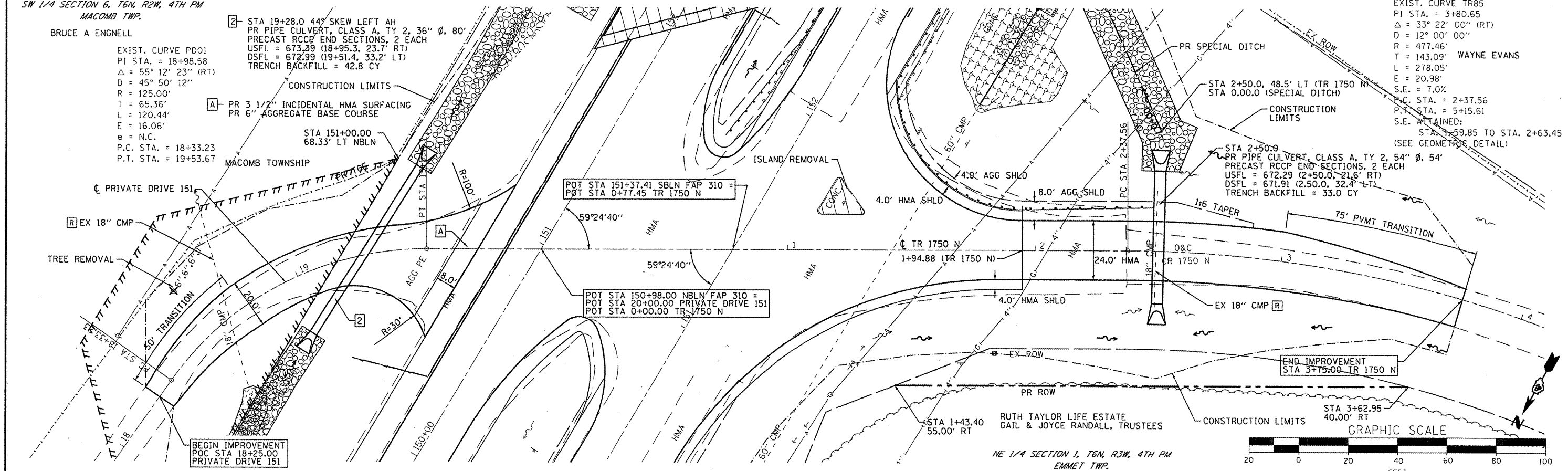
2 STA 19+28.0 44' SKEW LEFT AH
PR PIPE CULVERT, CLASS A, TY 2, 36" ϕ , 80"
PRECAST RCCP END SECTIONS, 2 EACH
USFL = 673.29 (18+95.3, 23.7' RT)
DSFL = 672.99 (19+51.4, 33.2' LT)
TRENCH BACKFILL = 42.8 CY

A PR 3 1/2" INCIDENTAL HMA SURFACING
PR 6" AGGREGATE BASE COURSE

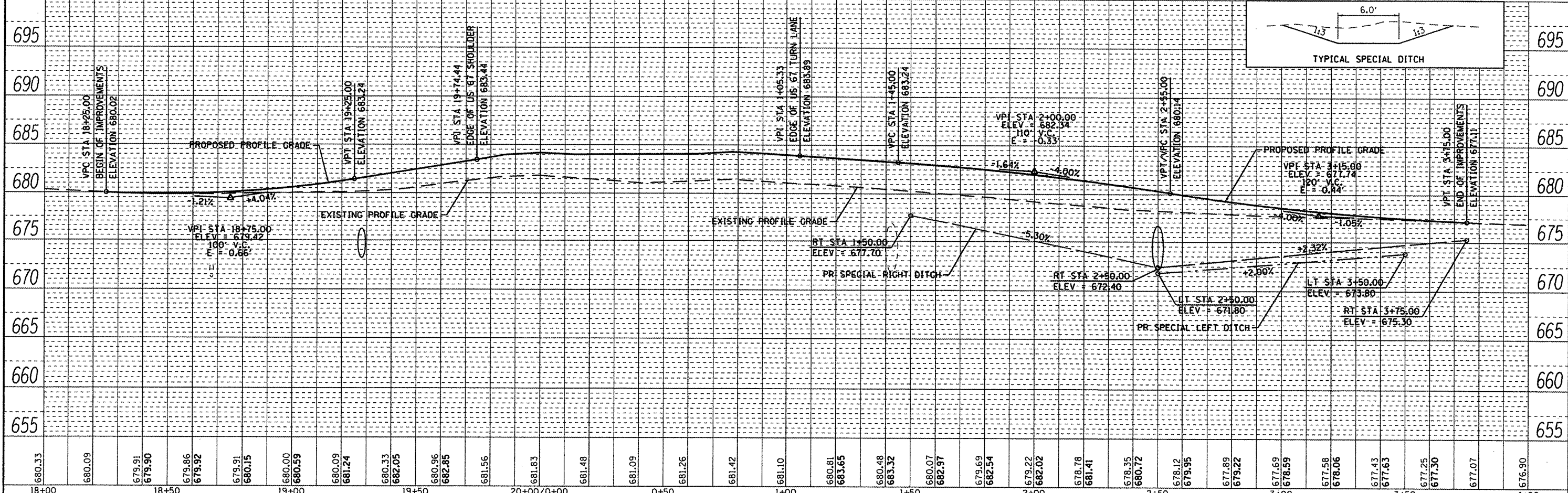
STA 151+00.00
68.33' LT NBLN

EXIST. CURVE TR85
PI STA. = 3+80.65
 $\Delta = 33^\circ 22' 00''$ (RT)
D = 12' 00" 00"
T = 477.46'
L = 143.09'
E = 20.98'
e = 7.0%
P.C. STA. = 2+37.56
P.T. STA. = 5+15.61
S.E. ATTAINED:
STA 1+59.85 TO STA. 2+63.45
(SEE GEOMETRIC DETAIL)

PLAN	DATE
BY	
REVISIONS	
NO.	
DATE	
BY	
REVISIONS	
NO.	
DATE	
BY	
REVISIONS	
NO.	
DATE	



PROFILE	DATE
BY	
REVISIONS	
NO.	
DATE	
BY	
REVISIONS	
NO.	
DATE	



18+00	18+50	19+00	19+50	20+00/0+00	0+50	1+00	1+50	2+00	2+50	3+00	3+50	4+00																																						
680.33	680.09	679.91	679.90	679.86	679.92	679.91	680.15	680.00	680.59	680.09	681.24	680.33	682.05	680.96	682.85	681.56	681.83	681.48	681.09	681.26	681.42	681.10	680.81	683.65	680.48	683.32	680.07	682.97	679.69	682.54	679.22	682.02	678.78	681.41	678.35	680.72	678.12	679.95	677.89	679.22	677.69	678.59	677.58	678.06	677.43	677.63	677.25	677.50	677.07	676.90

STATE OF ILLINOIS
DEPARTMENT OF TRANSPORTATION

PLAN & PROFILE SHEET - PRIVATE DRIVE 151 / TR 1750 N

F.A.P. RTE.	SECTION	COUNTY	TOTAL SHEETS	SHEET NO.
310	(38B-2)BR	MCDONOUGH	130	26

SCALE: 1"=20' SHEET NO. 7 OF 7 SHEETS STA. 18+00/0+00 TO STA. 20+00/4+00

CONTRACT NO. 68691 ILLINOIS FED. AID PROJECT