

TRAFFIC SIGNAL CONSTRUCTION SUMMARY

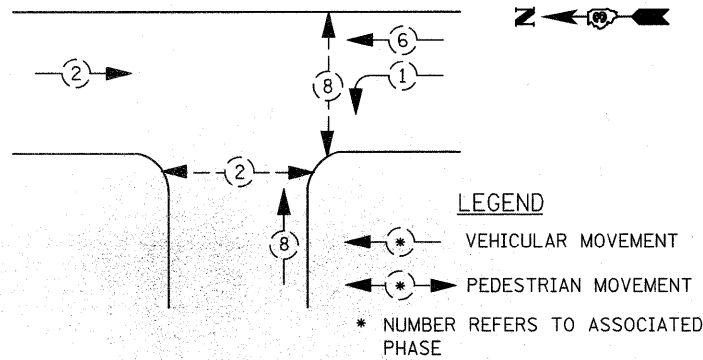
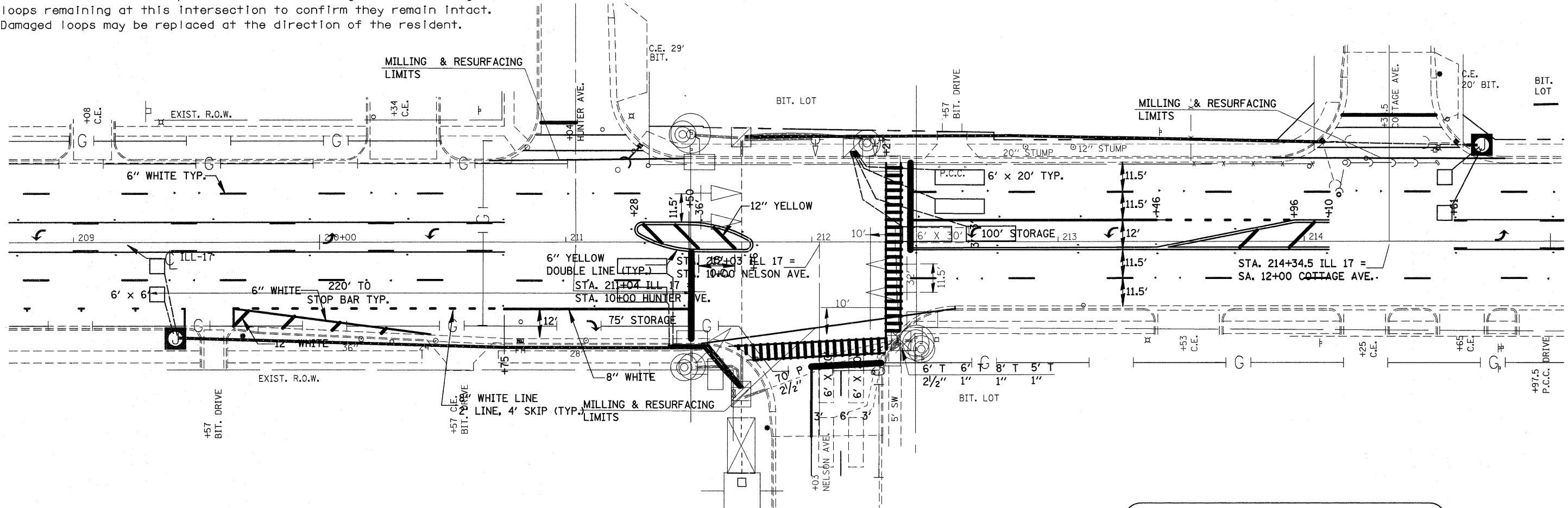
1. Only the detector loops on Illinois 17 will be removed by the milling operation. Replace the detector loops as shown.

2. Existing detector loop lead-in cable shall be tested prior to splicing onto the new detector loop. Existing detector loop lead-in testing good shall be reused. Testing of the existing lead-in cable shall be included in the price for Detector Loop Type I.

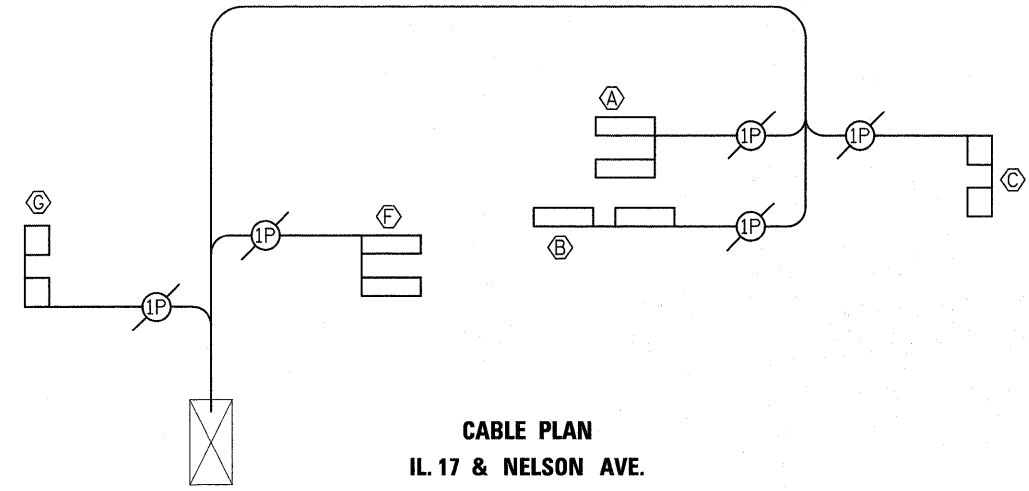
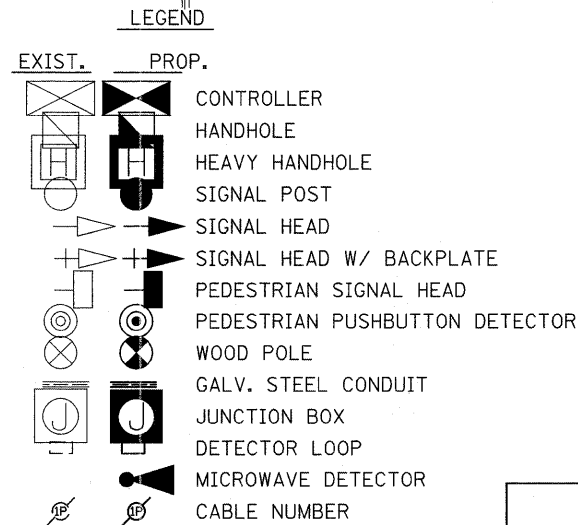
3. The contractor shall perform detector testing on the existing loops remaining at this intersection to confirm they remain intact. Damaged loops may be replaced at the direction of the resident.

DETECTOR LOOP INDUCTANCE CHART IL ROUTE 17 & NELSON				
LOOP SYSTEM	LABEL	NO. OF TURNS	INDUCTANCE (uH)	FREQUENCY Hertz
A	WB ST BR	3	375	31502
B	WBLT	3	381	31274
C	WB FAR	4	354	32430
D	NBRL	3	*	*
E	NBLL	3	*	*
F	EB ST BR	3	347	32755
G	EB FAR	4	308	34803

SCHEDULE OF QUANTITIES IL ROUTE 17 & NELSON		
DETECTOR LOOP, TYPE I	FOOT	587
DETECTOR TESTING	EACH	1



PROPOSED
PHASE DESIGNATION DIAGRAM
IL. 17 & NELSON AVENUE



CABLE PLAN
IL. 17 & NELSON AVENUE

FOR INFORMATION ONLY

FILE NAME =	USER NAME = leaf_w	DESIGNED -	REVISED -
c:\pwork\psidot\quigley\m\0202391\ED0604-shr-details.dgn		DRAWN -	REVISED -
		CHECKED -	REVISED -
		DATE -	REVISED -

STATE OF ILLINOIS
DEPARTMENT OF TRANSPORTATION

IL 17 AND NELSON AVENUE
DETECTOR LOOP INFORMATION

F.A.P. RTE.	SECTION	COUNTY	TOTAL SHEETS	SHEET NO.
330	(1,1R-2)RS	KANKAKEE	54	43
CONTRACT NO. 66477				
ILLINOIS FED. AID PROJECT				

SCALE: SHEET NO. OF SHEETS STA. TO STA.