

TRAFFIC SIGNAL CONSTRUCTION SUMMARY

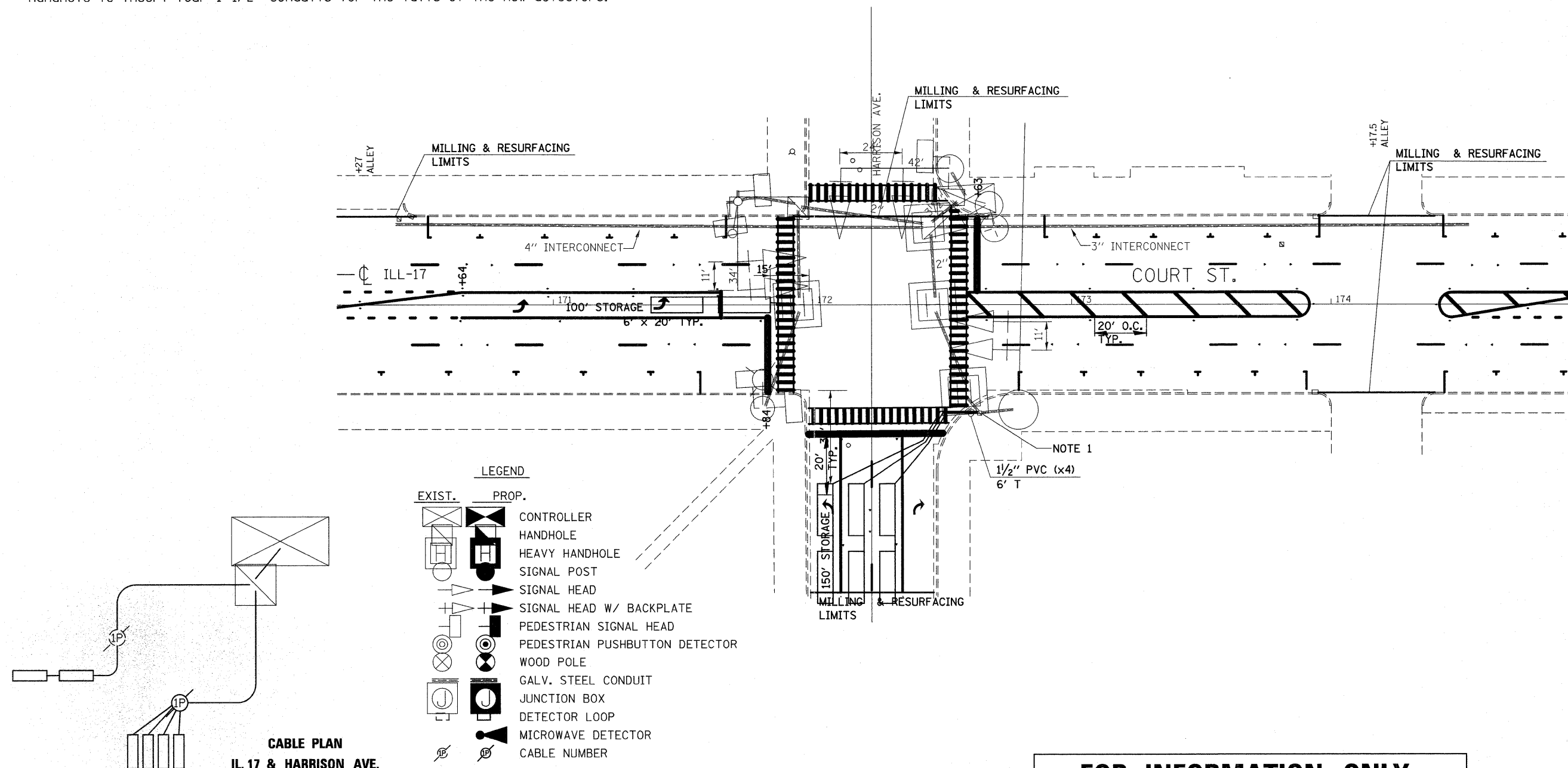
1. Detector loops on Illinois 17 will be removed by the milling operation. Replace the detector loops as shown.
2. Existing detector loop lead-in cable shall be tested prior to splicing onto the new detector loop. Existing detector loop lead-in testing good shall be reused. Testing of the existing lead-in cable shall be included in the price for Detector Loop Type I.
3. The northbound detector loops are new.
4. Install inductive loop detectors, harnesses, and necessary parts to place the new inductive loop detectors in operation.
5. Southeast quadrant: Remove sidewalk as necessary. Drill existing handhole to insert four 1-1/2" conduits for the tails of the new detectors.

CONSTRUCTION NOTES

1. Remove sidewalk as necessary. Drill existing handhole four times.

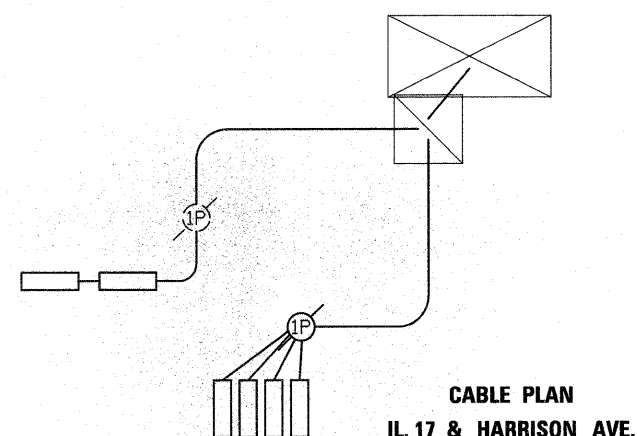
SCHEDULE OF QUANTITIES		
CONDUIT IN TRENCH, 1 1/2" DIA., PVC	FOOT	24
ELECTRIC CABLE IN TRENCH, LEAD-IN, NO. 14 1 PAIR	FOOT	106
DRILL EXISTING HANDHOLE	EACH	4
INDUCTIVE LOOP DETECTOR (SPECIAL)	EACH	1
DETECTOR LOOP, TYPE I	FOOT	536
PORTLAND CEMENT CONCRETE SIDEWALK 4 INCH	SQ FT	24
SIDEWALK REMOVAL	SQ FT	24
TRENCH AND BACKFILL FOR ELECTRICAL WORK	FOOT	7

DETECTOR LOOP INDUCTANCE CHART IL ROUTE 17 & HARRISON AVE				
LOOP SYSTEM	LABEL	NO. OF TURNS	INDUCTANCE (uH)	FREQUENCY Hertz
A	WBLT	3	359	32228
B	NB	3	653	23875



LEGEND

EXIST.	PROP.	
		CONTROLLER
		HANDHOLE
		HEAVY HANDHOLE
		SIGNAL POST
		SIGNAL HEAD
		SIGNAL HEAD W/ BACKPLATE
		PEDESTRIAN SIGNAL HEAD
		PEDESTRIAN PUSHBUTTON DETECTOR
		WOOD POLE
		GALV. STEEL CONDUIT
		JUNCTION BOX
		DETECTOR LOOP
		MICROWAVE DETECTOR
		CABLE NUMBER



FOR INFORMATION ONLY