

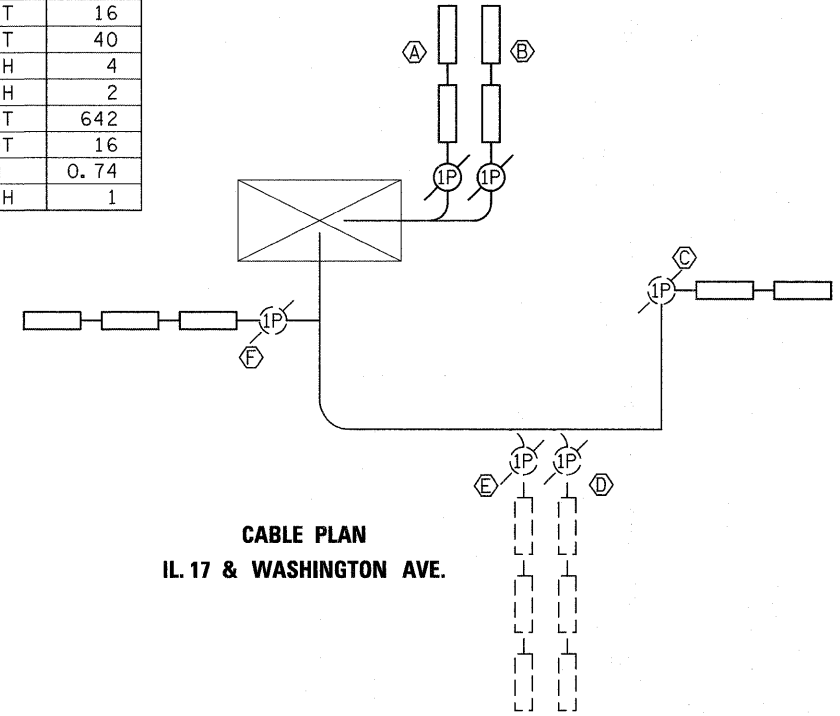
TRAFFIC SIGNAL CONSTRUCTION SUMMARY

1. Detector loops on Illinois 17 are existing and will be removed by the milling operation. Replace the detector loops as shown.
2. Existing detector loop lead-in cable shall be tested prior to splicing onto the new detector loop. Existing detector loop lead-in testing good shall be reused. Testing of the existing lead-in cable shall be included in the price for Detector Loop Type I.
3. The contractor shall perform detector testing on the existing loops remaining at this intersection to confirm they remain intact. Damaged loops may be replaced at the direction of the resident.
4. The southbound detector loops are new. The northbound detector loops are being installed on a separate contract.
5. Install inductive loop detectors, harnesses, and necessary parts to place the new inductive loop detectors in operation.
6. Northwest quadrant: Remove pavement as necessary. Drill existing handhole to insert four 1-1/2" conduits for the tails of MILLING & RESURFACING LIMITS
7. Eastbound left turn lane: It is unknown whether the existing detector loops for the eastbound left turn lane are spliced in the mast arm shaft on the northwest quadrant or in the handhole in the eastbound left turn lane. The contractor shall discover the actual location and cut the tail of the new detector to meet the existing dive hole conduit.

SCHEDULE OF QUANTITIES		
CONDUIT IN TRENCH, 1 1/2" DIA., PVC	FOOT	16
ELECTRIC CABLE IN CONDUIT, LEAD-IN, NO. 14 1 PAIR	FOOT	40
DRILL EXISTING HANDHOLE	EACH	4
INDUCTIVE LOOP DETECTOR (SPECIAL)	EACH	2
DETECTOR LOOP, TYPE I	FOOT	642
TRENCH AND BACKFILL FOR ELECTRICAL WORK	FOOT	16
INCIDENTAL BITUMINOUS SURFACING	TON	0.74
DETECTOR TESTING	EACH	1

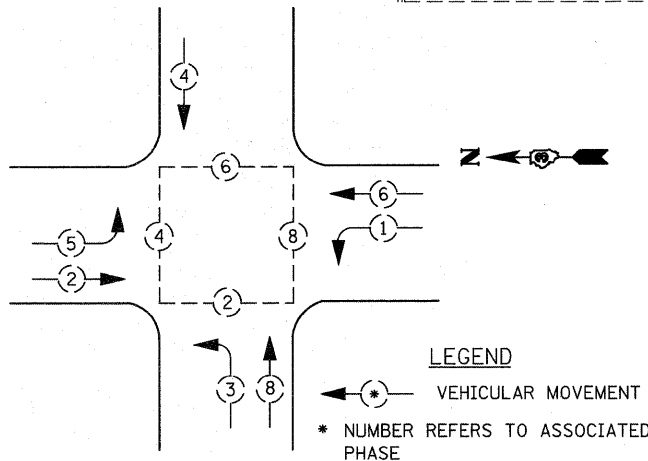
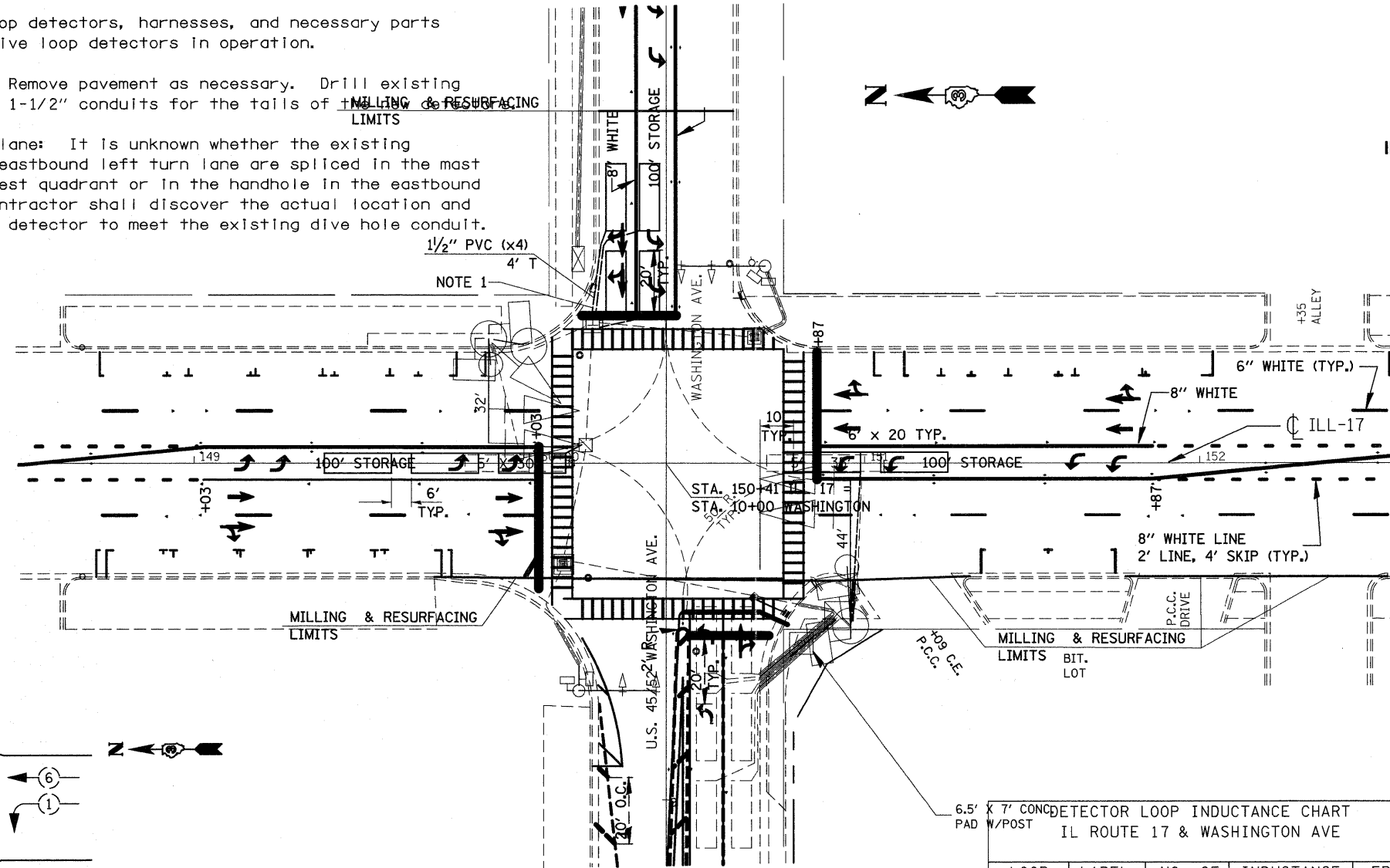
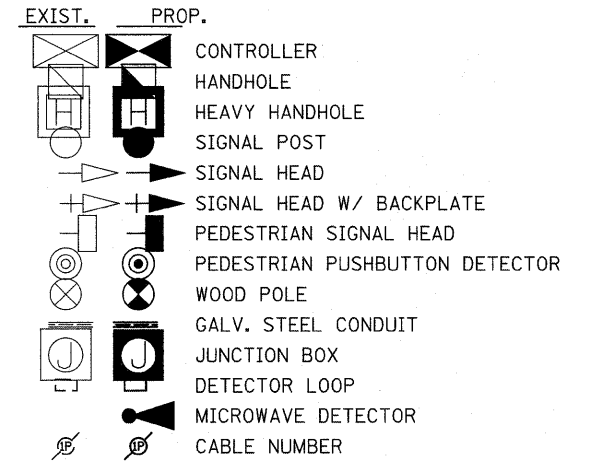
CONSTRUCTION NOTES

1. Remove pavement as necessary. Drill existing handhole four times.



CABLE PLAN
IL 17 & WASHINGTON AVE.

LEGEND



PHASE DESIGNATION DIAGRAM
IL 17 & WASHINGTON AVENUE

DETECTOR LOOP INDUCTANCE CHART
IL ROUTE 17 & WASHINGTON AVE

LOOP SYSTEM	LABEL	NO. OF TURNS	INDUCTANCE (uH)	FREQUENCY Hertz
A	SBRL	3	324	33890
B	SBLL	3	327	33731
C	WBLT	3	370	31726
D	NBRL	*	*	*
E	NBLL	*	*	*
F	EBLT	3	488	27615

FOR INFORMATION ONLY