

F.A.P. RTE.	SECTION	COUNTY	TOTAL SHEETS	SHEET NO.
330	(1,1R-2)RS	KANKAKEE	54	1
		ILLINOIS	CONTRACT NO. 66477	

STATE OF ILLINOIS
DEPARTMENT OF TRANSPORTATION
DIVISION OF HIGHWAYS
**PROPOSED
HIGHWAY PLANS**

**F.A.P. ROUTE 330 (IL 17)
SECTION (1,1R-2)RS
PROJECT: ACF-0330(067)
3P RESURFACING, SIDEWALK RAMPS
KANKAKEE COUNTY**

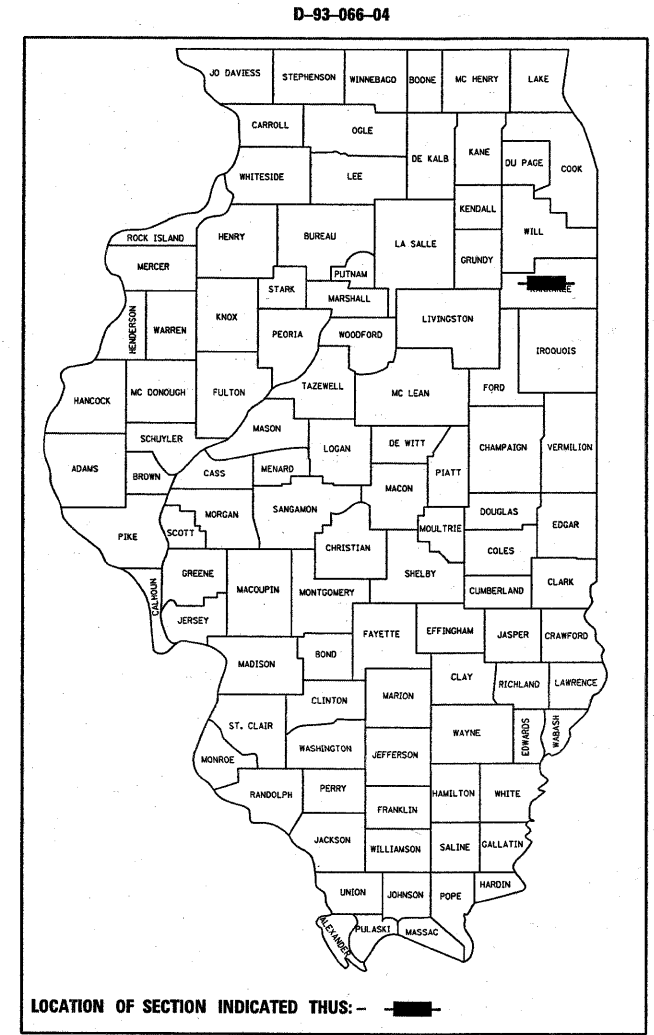
C-93-122-04

INDEX OF SHEETS

- 1 COVER SHEET
- 2 GENERAL NOTES
- 3 - 5 SUMMARY OF QUANTITIES
- 6 - 10 TYPICAL SECTIONS
- 11 - 16 SCHEDULE OF QUANTITIES
- 17 - 33 PLAN VIEW
- 34 - 49 DETECTOR LOOP INFORMATION
- 50 - 54 DETAILS

STANDARDS

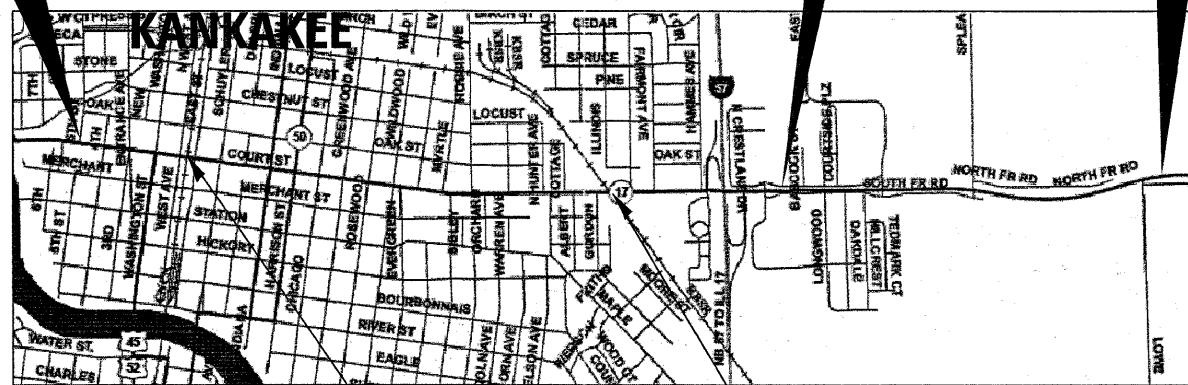
- 000001-06 STANDARD SYMBOLS, ABBREVIATIONS AND PATTERNS
- 001006 DECIMAL OF AN INCH AND OF A FOOT
- 424001-06 PERPENDICULAR CURB RAMPS FOR SIDEWALKS
- 424006 DIAGONAL CURB RAMPS FOR SIDEWALKS
- 424011 CORNER PARALLEL CURB RAMPS FOR SIDEWALKS
- 424016 MID-BLOCK CURB RAMPS FOR SIDEWALKS
- 424021 DEPRESSED CORNER FOR SIDEWALKS
- 424026 ENTRANCE / ALLEY PEDESTRIAN CROSSINGS
- 424031 MEDIAN PEDESTRIAN CROSSINGS
- 442201-03 CLASS C AND D PATCHES
- 606001-04 CONCRETE CURB TYPE B AND COMBINATION CONCRETE CURB AND GUTTER
- 701602-05 URBAN LANE CLOSURE, MULTILANE, 2W WITH BIDIRECTIONAL LEFT TURN LANE
- 701801-05 LANE CLOSURE, MULTILANE 1W OR 2W CROSSWALK OR SIDEWALK CLOSURE
- 701901-02 TRAFFIC CONTROL DEVICES
- 780001-03 TYPICAL PAVEMENT MARKINGS
- 781001-03 TYPICAL APPLICATIONS RAISED REFLECTIVE PAVEMENT MARKERS
- 886001-01 DETECTOR LOOP INSTALLATIONS
- 886006-01 TYPICAL LAYOUT FOR DETECTION LOOPS



**ILLINOIS RT 17
BEGIN IMPROVEMENT
STA 138+00**

**STATION EQUATION
STA 249+19.06 BK =
STA 3+83.36 AH**

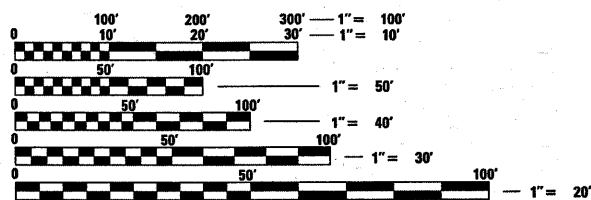
**ILLINOIS RT 17
END IMPROVEMENT
STA 66+50**



PAVING OMISSIONS

STA 152+00 - 159+00
SN 046-0124

STA 221+01 - 221+17



FULL SIZE PLANS HAVE BEEN PREPARED USING STANDARD ENGINEERING SCALES. REDUCED SIZED PLANS WILL NOT CONFORM TO STANDARD SCALES. IN MAKING MEASUREMENTS ON REDUCED PLANS, THE ABOVE SCALES MAY BE USED.

J.U.L.I.E.
JOINT UTILITY LOCATION INFORMATION FOR EXCAVATION
1-800-892-0123
OR 811

PROJECT ENGINEER CRAIG REED, P.E.
PROJECT MANAGER MARK JONES, P.E.

CONTRACT NO. 66477

GROSS LENGTH = 17,285.18 FT. = 3.274 MILE
NET LENGTH = 17,269.18 FT. = 3.271 MILE

OTHER PRINCIPAL ARTERIAL

ADT 2009 = 15,500 AT IL 50
HCV=9.19%, SU=6.45%, MU=2.74%
ADT 2009 = 20,000 AT NELSON AVE
HCV=7.0%, SU=4.75%, MU=2.25%
ADT 2009 = 12,600 AT LOWE RD
HCV=9.19%, SU=6.45%, MU=2.74%

STATE OF ILLINOIS
DEPARTMENT OF TRANSPORTATION
DIVISION OF HIGHWAYS

SUBMITTED December 21 20 11
Eric S. Thordarson
DEPUTY DIRECTOR OF HIGHWAYS, REGION ENGINEER

February 3 20 12
John D. Baranzelli P.E.
ENGINEER OF DESIGN AND ENVIRONMENT

February 3 20 12
William R. Frenja
DIRECTOR OF HIGHWAYS, CHIEF ENGINEER

**PRINTED BY THE AUTHORITY
OF THE STATE OF ILLINOIS**