

INDEX TO SHEETS

1. COVER SHEET
2. SUMMARY OF QUANTITIES, SYMBOLS & GENERAL NOTES
3. DEMOLITION SITE PLAN
4. GEOMETRY PLAN
5. OVERALL SITE PLAN
6. FOUNDATION PLAN & SECTIONS
7. ELECTRICAL PLAN
8. LANDSCAPE PLAN
9. STREET CLOCK DETAILS
10. CONSTRUCTION DETAILS

BENCHMARKS:

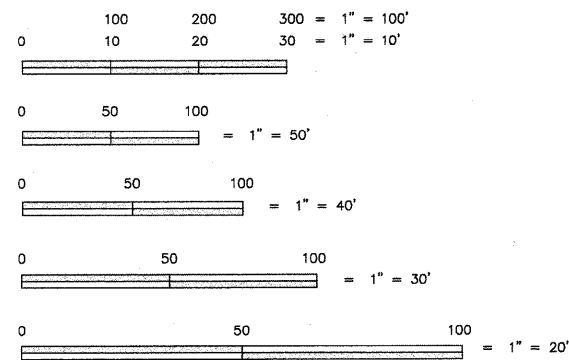
SOUTHEAST FLANGE BOLT ON FIRE HYDRANT AT THE SOUTHEAST CORNER OF EXCHANGE STREET & MAIN STREET
ELEV. = 735.57

FLANGE BOLT ON FIRE HYDRANT AT THE SOUTHEAST CORNER OF EXCHANGE STREET & WOOD STREET
ELEV. = 731.68

TRAFFIC DATA

ILLINOIS RT. 1 2012 - 9,700
EXCHANGE ST. 2012 - 10,000

THE IMPROVEMENT IS LOCATED IN THE VILLAGE OF CRETE



FULL SIZE PLANS HAVE BEEN PREPARED USING STANDARD ENGINEERING SCALES. REDUCED SIZE PLANS WILL NOT CONFORM TO STANDARD SCALES. IN MAKING MEASUREMENTS ON REDUCED SIZE PLANS, THE ABOVE SCALES MAY BE USED.

Call Before You Dig
JULIE
ILLINOIS ONE-CALL SYSTEM
Call: 811 OR 1-800-892-0123

JOINT UTILITY LOCATING INFORMATION FOR EXCAVATORS
48 hours before you dig (EXCLUDING SAT., SUN. & HOL.)
811

DATE: JUNE 23, 2011

ILLINOIS PROFESSIONAL DESIGN FIRM NO. 184-002235

TECH 3 Consulting Group, Inc.

JOB NO. 06923
ENGINEERS 737 West Exchange St. Crete, IL 60417
SURVEYORS ph 708.672.4994 fax 708.672.3739

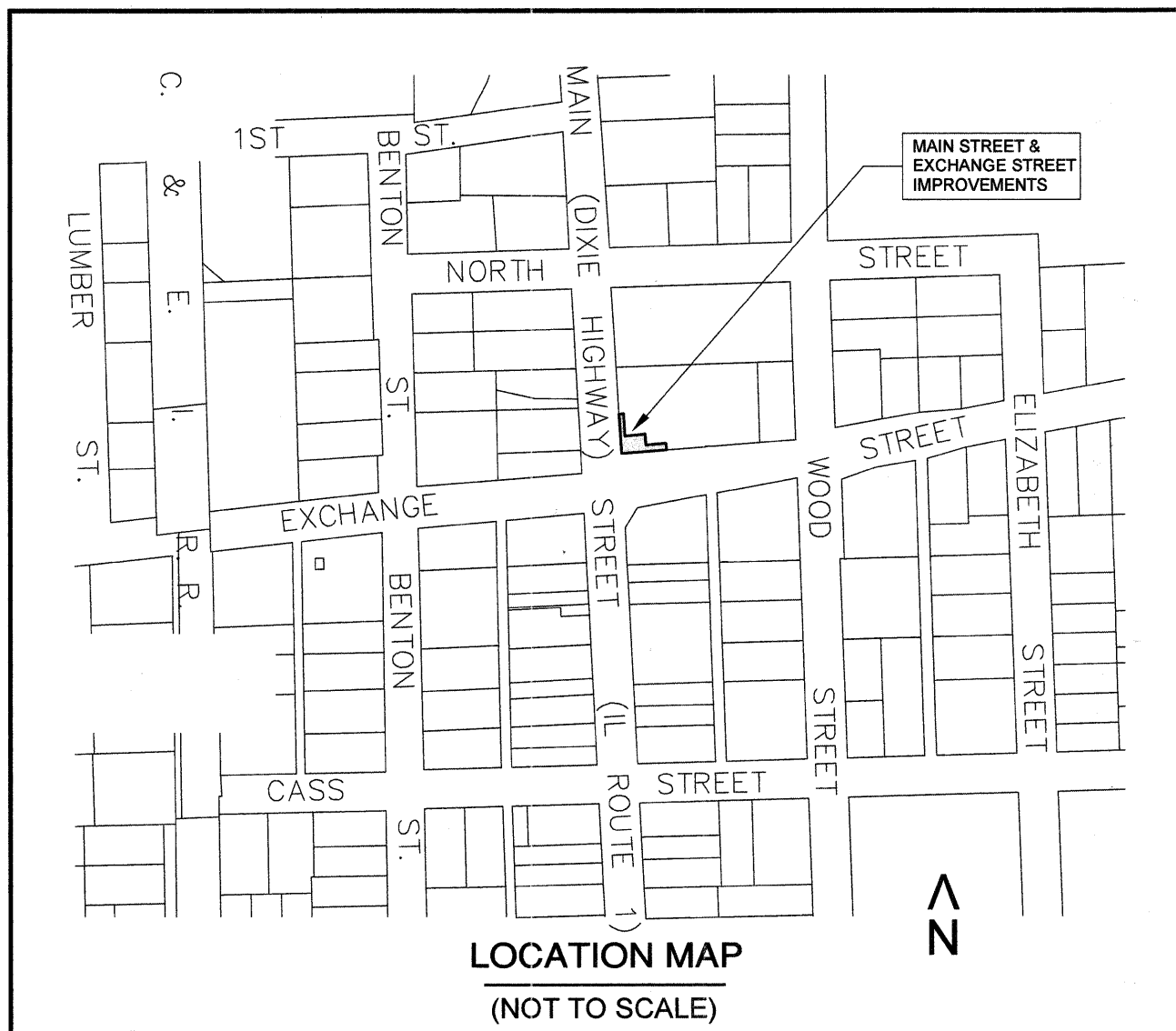
STATE OF ILLINOIS
DEPARTMENT OF TRANSPORTATION
DIVISION OF HIGHWAYS

**PLANS FOR PROPOSED
FEDERAL AID HIGHWAY**

FAP 0876 (ILLINOIS ROUTE 1)
NORTHEAST CORNER OF EXCHANGE STREET
LANDSCAPING
SECTION: 06-00044-00-LS
PROJECT NO. TE-00DI (728)
VILLAGE OF CRETE
WILL COUNTY
JOB NO. C-91-051-07

RANGE 14 EAST OF THE 3RD PRINCIPAL MERIDIAN

TOWNSHIP 34 NORTH



LOCATION MAP

(NOT TO SCALE)

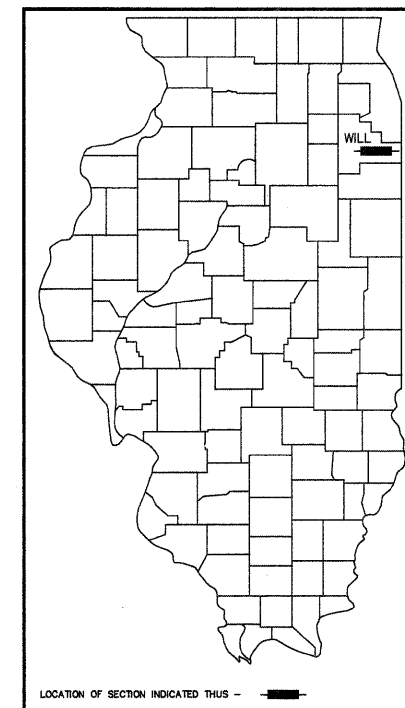
CRETE TOWNSHIP

GROSS AND NET LENGTH OF PROJECT = 100 FEET (0.02 MILES)

ROUTE NO.	SECTION	COUNTY	TOTAL SHEETS	SHEET NO.
876	06-00044-00-LS	WILL	10	1

ILLINOIS PROJECT : TE-00DI (728)

CONTRACT NO. 63664



STATE OF ILLINOIS DEPARTMENT OF TRANSPORTATION DIVISION OF HIGHWAYS

APPROVED 1/6/12

Dil Homarist
VILLAGE OF CRETE, DIRECTOR OF PUBLIC WORKS

PASSED January 9, 2012

Charles F. Riddler
REGION ONE ENGINEER OF LOCAL ROADS & STREETS

RELEASING FOR BID BASED ON LIMITED REVIEW JANUARY 10, 2012

Diane M. O'Keefe
DEPUTY DIRECTOR OF HIGHWAYS, REGION 1 ENGINEER



ROBERT W. MATTHEY, P.E.
LICENSE NO. 062 - 39765
LICENSE/EXPIRES: 11/30/13
TECH 3 CONSULTING GROUP, INC.



PRINTED BY THE AUTHORITY OF THE STATE OF ILLINOIS

SUMMARY OF QUANTITIES

PAY ITEM CODE #	DESCRIPTION	UNIT	QUANTITY	CONSTRUCTION CODE TYPE 0031
20800150	TRENCH BACKFILL	CU YD	15	15
42400800	DETECTABLE WARNINGS	SQ FT	12	12
44000100	PAVEMENT REMOVAL	SQ YD	210	210
44000300	CURB REMOVAL	FOOT	90	90
44000600	SIDEWALK REMOVAL	SQ FT	700	700
44201701	CLASS D PATCHES, TYPE 1, 5 INCH	SQ YD	60	60
550A2310	STORM SEWERS, RUBBER GASKET, CLASS A, TYPE 1 10"	FOOT	37	37
60206905	CATCH BASINS, TYPE C, TYPE 1 FRAME, OPEN LID	EACH	1	1
60600605	CONCRETE CURB, TYPE B	FOOT	50	50
* 66900200	NON-SPECIAL WASTE DISPOSAL	CU YD	20	20
* 66900450	SPECIAL WASTE PLANS AND REPORTS	L SUM	1	1
* 66900530	SOIL DISPOSAL ANALYSIS	EACH	1	1
67100100	MOBILIZATION	L SUM	1	1
70102620	TRAFFIC CONTROL AND PROTECTION, STANDARD 701501	L SUM	1	1
70102640	TRAFFIC CONTROL AND PROTECTION, STANDARD 701801	L SUM	1	1
* Δ XX005054	LANDSCAPE PLANTING COMPLETE	L SUM	1	1
Δ XX007946	STREET CLOCK PLAZA COMPLETE	L SUM	1	1

* = SPECIALTY ITEMS
 Δ = SEE SPECIAL PROVISIONS

INDEX OF STATE STANDARDS

000001-06	STANDARD SYMBOLS ABBREVIATIONS AND PATTERNS
424001-06	PERPENDICULAR CURB RAMPS
424006	DIAGONAL CURB RAMPS FOR SIDEWALKS
442201-03	CLASS C AND D PATCHES
602011-02	CATCH BASIN - TYPE C
604001-03	FRAME & LIDS - TYPE 1
606001-04	CONC. CURB TYPE B & COMBO CONC. CURB & GUTTER
701501-06	URBAN LANE CLOSURE
701801-05	SIDEWALK CLOSURE
701901-02	TRAFFIC CONTROL DEVICES

GENERAL NOTES

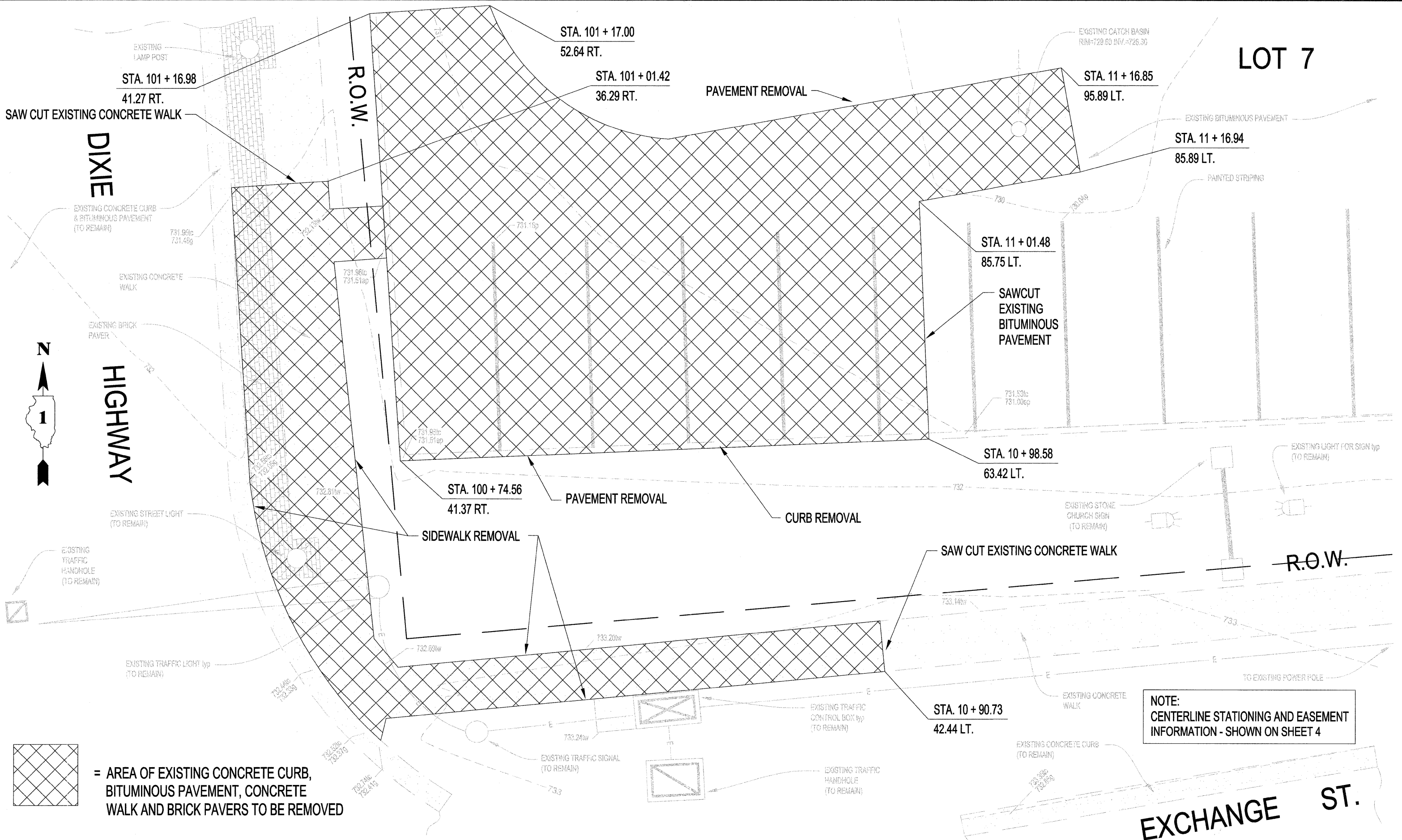
1. THE WORK UNDER THIS CONTRACT SHALL CONFORM TO "STANDARD SPECIFICATIONS FOR ROAD AND BRIDGE CONSTRUCTION," ADOPTED ON JANUARY 1, 2012, THE LATEST EDITION OF THE "MANUAL ON UNIFORM TRAFFIC CONTROL DEVICES FOR STREETS AND HIGHWAYS," AND THE "MANUAL OF TEST PROCEDURES OF MATERIALS" IN EFFECT ON THE DATE OF INVITATION OF BIDS, AND THE SUPPLEMENTAL SPECIFICATIONS AND RECURRING SPECIAL PROVISIONS.
2. THE ENGINEER SHALL BE NOTIFIED 2 WORKING DAYS PRIOR TO COMMENCING OF CONSTRUCTION.
3. ALL BENCHMARK ELEVATIONS ARE BASED ON THE N.G.V.D. 1929 DATUM.
4. EXCEPT AS NOTED IN THE PLANS, PAVEMENT GRADES SHOWN ARE AT THE TOP OF PAVEMENT SURFACES.
5. ALL EXCAVATION UNDER PAVEMENT, SIDEWALK AND CURB & GUTTER SHALL BE BACKFILLED AND COMPACTED WITH MATERIAL MEETING THE REQUIREMENTS OF SECTION 208. SEPARATE PAYMENT FOR TRENCH BACKFILL SHALL BE MADE ONLY WHEN SPECIFIED IN THE PLANS.
6. FOR NEW CONSTRUCTION, PLACE SIDEWALK RAMPS (STD. 424001) AT ALL LOCATIONS WHERE PROPOSED SIDEWALK ABUTS CURB AT STREET ENTRANCES.
7. THE CONTRACTOR SHALL BE RESPONSIBLE FOR PROTECTING UTILITY PROPERTY FROM CONSTRUCTION OPERATIONS AS OUTLINED IN ARTICLE 105.07 & 107.31 OF THE STANDARD SPECIFICATIONS. THE J.U.L.I.E. NUMBER IS 811. A MINIMUM OF FORTY-EIGHT (48) HOURS ADVANCE NOTICE IS REQUIRED.
8. ALL SAWCUTTING SHALL BE CONSIDERED INCLUDED IN THE COST OF THE REMOVAL ITEMS INVOLVED.
9. THE CONTRACTOR SHALL COORDINATE CONSTRUCTION ACTIVITIES WITH ALL UTILITY COMPANIES AND THE VILLAGE OF CRETE.
10. CONSTRUCTION OF "STREET CLOCK PLAZA COMPLETE" SHALL CONSIST OF PROVIDING LABOR, TOOLS, EQUIPMENT AND MATERIALS TO CONSTRUCT THE PLANTER FOUNDATIONS, PLANTER WALLS, WALKS, STAIRS, UNDER DRAINS, FLAG POLES AND FLAG POLE FOUNDATIONS, STREET CLOCK AND CLOCK FOUNDATION, ALL ELECTRICAL WORK AND ALL EXCAVATION NECESSARY TO COMPLETE SAID CONSTRUCTION. - SEE SPECIAL PROVISIONS
11. CONSTRUCTION OF "LANDSCAPE PLANTING COMPLETE" SHALL CONSIST OF PROVIDING LABOR, TOOLS, EQUIPMENT AND MATERIALS TO CONSTRUCT ALL OF THE LANDSCAPE PLANTING SHOWN AND DESCRIBED ON THE PLANS INCLUDING THE SHREDDED BARK MULCH. - SEE SPECIAL PROVISIONS
12. THE GENERAL CONTRACTOR IS REQUIRED TO HIRE AN ENVIRONMENTAL FIRM WITH AT LEAST (5) DOCUMENTED LEAKING UNDERGROUND STORAGE TANK CLEAN UPS OR THAT IS PRE-QUALIFIED IN HAZARDOUS WASTE BY THE DEPARTMENT TO REMEDIATE THE SOIL CONTAMINATION AND MONITOR FOR WORKER PROTECTION.
13. FOR WORK OUTSIDE THE LIMITS OF BRIDGE APPROACH PAVEMENT, ALL REFERENCES IN THE HIGHWAY STANDARDS AND STANDARD SPECIFICATIONS FOR REINFORCEMENT, DOWEL BARS AND TIE BARS IN PAVEMENT, SHOULDERS, CURB, GUTTER, COMBINATION CURB AND GUTTER AND MEDIAN, AND CHAIR SUPPORTS FOR CRC PAVEMENT, SHALL BE EPOXY COATED, UNLESS NOTED ON THE PLAN.

BILL OF MATERIALS PERFORMED UNDER "STREET CLOCK COMPLETE"

1. EXCAVATION FOR FOOTINGS AND FOUNDATIONS	CU YD	70
2. GRANULAR BACK FILL OF FOUNDATIONS UNDER PROPOSED WALK AND CURB	CU YD	40
3. TOPSOIL PLACED IN PLANTING BEDS AND PLANTERS	CU YD	70
4. CONCRETE FOOTINGS AND FOUNDATIONS	CU YD	68
5. PCC SIDEWALK, STAIRS AND THICKENED EDGE	SQ FT	1660
6. MODULAR FACE BRICK	SQ FT	600
7. 3" CUT LIMESTONE CAP	SQ FT	260
8. 4" PVC PIPE DRAIN	FOOT	60
9. 4" PERFORATED UNDERDRAIN	FOOT	146
10. ANODIZED ALUMINUM SKATE BOARD DETERENT	EACH	80
11. CAST ALUMINUM FLOOD LIGHTS	EACH	7
12. ALL WEATHER GFCI RECEPTICALS	EACH	10
13. ALL WEATHER WALL MOUNTED ELECTRIC CONTROL ENCLOSURE WITH CONTROL PANEL, BREAKERS, CONTACTOR AND PHOTO CELL	EACH	1
14. 100 AMP UNDERGROUND ELECTRIC SERVICE	EACH	1
15. 25 FOOT ALUMINUM FLAG POLE AND GROUND SLEEVE	EACH	1
16. 20 FOOT ALUMINUM FLAG POLE AND GROUND SLEEVE	EACH	6
17. STREET CLOCK	EACH	1
18. CAST IRON GROUND SLEEVE AND COVER	EACH	1

NOTE:
 THESE ITEMS AND QUANTITIES ARE PROVIDED AS A GUIDE TO ILLUSTRATE THE SCOPE OF THIS PAY ITEM.

LOT 7



TECH 3 Consulting Group, Inc.
ENGINEERS SURVEYORS
737 West Exchange St. Chgo. IL 60617
ph 708.672.4894 fax 708.672.3728
ILLINOIS PROFESSIONAL DESIGN FIRM NO. 184-02235

USER NAME =
DESIGNED - WJS
DRAWN - EGH
PLOT SCALE =
CHECKED - WJS
PLOT DATE =
DATE - JUNE 23, 2011

REVISED - DEC. 21, 2011
REVISED -
REVISED -
REVISED -

STATE OF ILLINOIS
DEPARTMENT OF TRANSPORTATION

Village of CRETE
WILL COUNTY, ILLINOIS
60417
524 EXCHANGE STREET • P.O. BOX 337 • Phone 708-672-5431

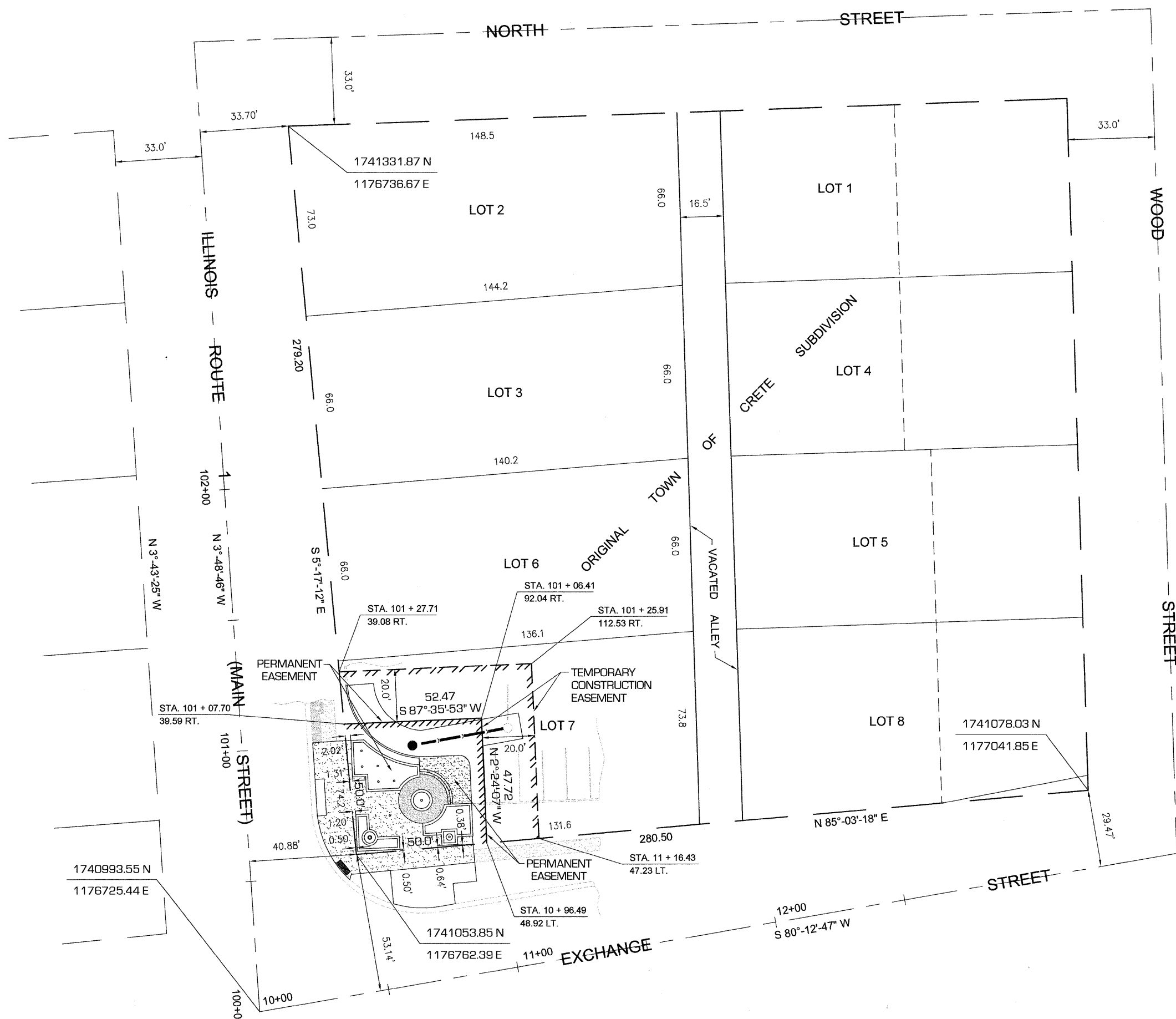
DEMOLITION SITE PLAN
ILLINOIS ROUTE 1 & EXCHANGE
STREET LANDSCAPING

F.A. RTE. 876	SECTION 06-00044-00-LS	COUNTY WILL	TOTAL SHEETS 10	SHEET NO. 3
JOB NO. C-91-051-07		CONTRACT NO. 63664		
FED. ROAD DIST. NO. 1		ILLINOIS		
FED. AID PROJECT: TE-00D1 (728)				

SCALE: 1/4" = 1'-0"

SHEET NO. 3 OF 10 SHEETS

STA. - TO STA. -



TECH 3 Consulting Group, Inc.
 ENGINEERS SURVEYORS
 737 West Exchange St. Crete, IL 60417
 ph 708.672.4564 fax 708.672.3739
 ILLINOIS PROFESSIONAL DESIGN FIRM NO. 184-002235

USER NAME =
 PLOT SCALE =
 PLOT DATE =

DESIGNED - WJS
 DRAWN - EGH
 CHECKED - WJS
 DATE - OCTOBER 19, 2011

REVISED - DEC. 21, 2011
 REVISED -
 REVISED -
 REVISED -

STATE OF ILLINOIS
DEPARTMENT OF TRANSPORTATION

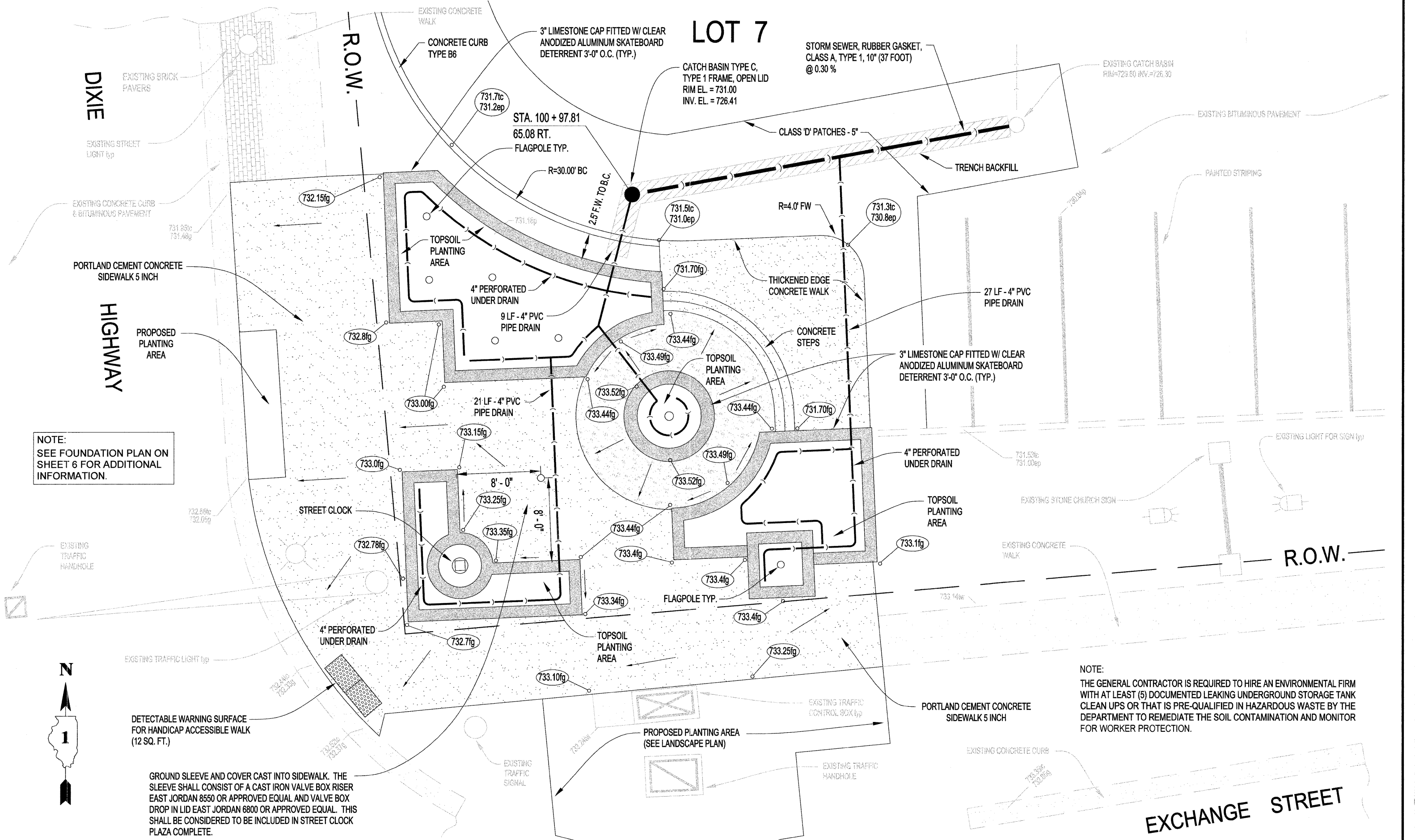
Village of CRETE
 WILL COUNTY, ILLINOIS
 524 EXCHANGE STREET * P.O. BOX 317 * Phone 708-672-5431

GEOMETRY PLAN
ILLINOIS ROUTE 1 & EXCHANGE
STREET LANDSCAPING

F.A. RTE.	SECTION	COUNTY	TOTAL SHEETS	SHEET NO.
876	06-00044-00LS	WILL	10	4
JOB NO. C-91-051-07		CONTRACT NO. 63664		
FED. ROAD DIST. NO. 1		ILLINOIS	FED. AID PROJECT: TE-00D1 (72B)	

SCALE: 1" = 20' SHEET NO. 4 OF 10 SHEETS STA. - TO STA. -

LOT 7



NOTE:
SEE FOUNDATION PLAN ON
SHEET 6 FOR ADDITIONAL
INFORMATION.

NOTE:
THE GENERAL CONTRACTOR IS REQUIRED TO HIRE AN ENVIRONMENTAL FIRM
WITH AT LEAST (5) DOCUMENTED LEAKING UNDERGROUND STORAGE TANK
CLEAN UPS OR THAT IS PRE-QUALIFIED IN HAZARDOUS WASTE BY THE
DEPARTMENT TO REMEDIATE THE SOIL CONTAMINATION AND MONITOR
FOR WORKER PROTECTION.

GROUND SLEEVE AND COVER CAST INTO SIDEWALK. THE
SLEEVE SHALL CONSIST OF A CAST IRON VALVE BOX RISER
EAST JORDAN 8550 OR APPROVED EQUAL AND VALVE BOX
DROP IN LID EAST JORDAN 6800 OR APPROVED EQUAL. THIS
SHALL BE CONSIDERED TO BE INCLUDED IN STREET CLOCK
PLAZA COMPLETE.

TECH 3 Consulting Group, Inc.
ENGINEERS SURVEYORS
737 West Exchange St., Crete, IL 60417
PH 708.672.4894 FAX 708.672.3729
ILLINOIS PROFESSIONAL DESIGN FIRM NO. 184-002225

USER NAME =	DESIGNED - WJS
PLOT SCALE =	DRAWN - EGH
PLOT DATE =	CHECKED - WJS
	DATE - JUNE 23, 2011

REVISED - DEC. 21, 2011
REVISED - JAN. 5, 2012
REVISED -
REVISED -

STATE OF ILLINOIS
DEPARTMENT OF TRANSPORTATION

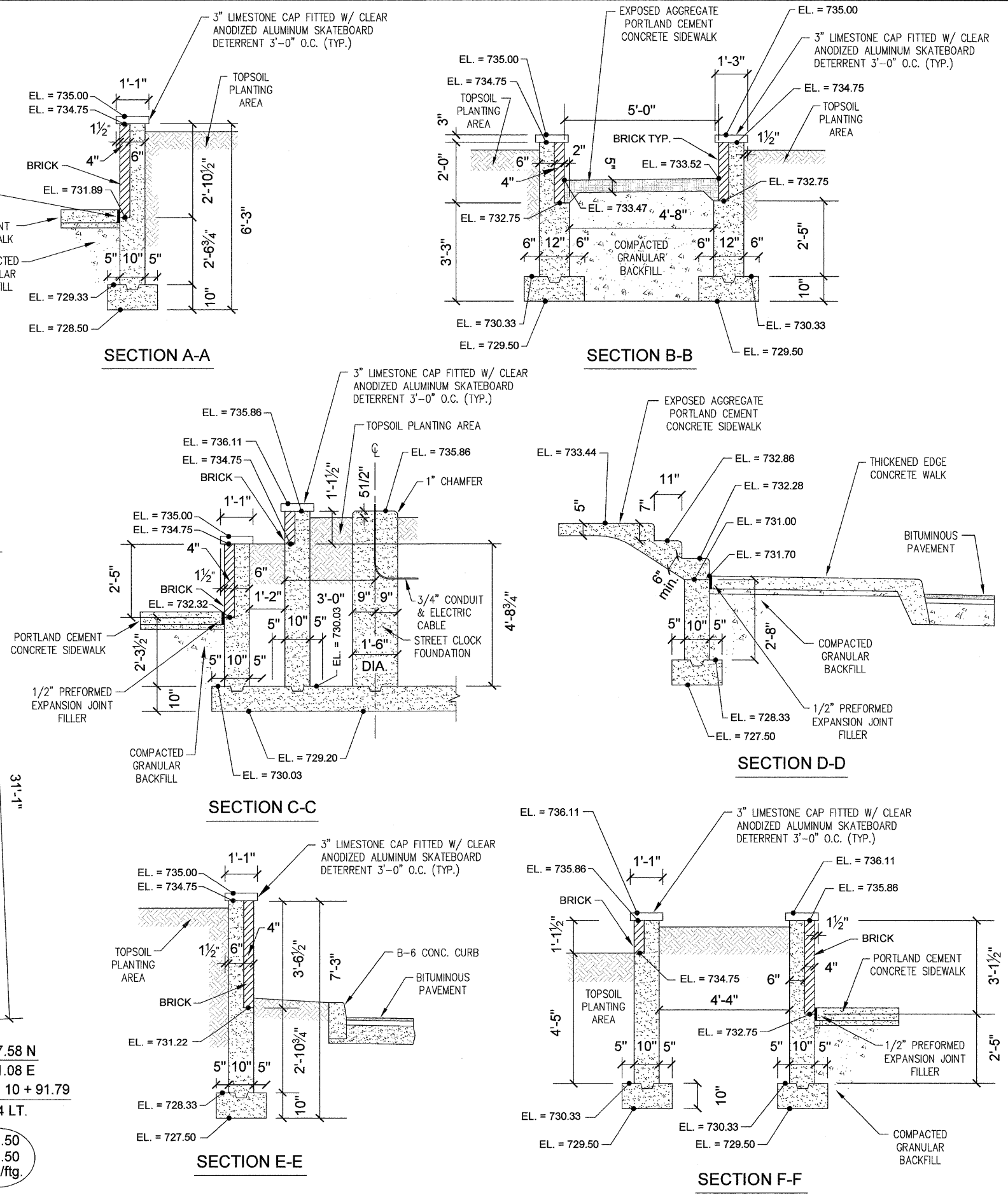
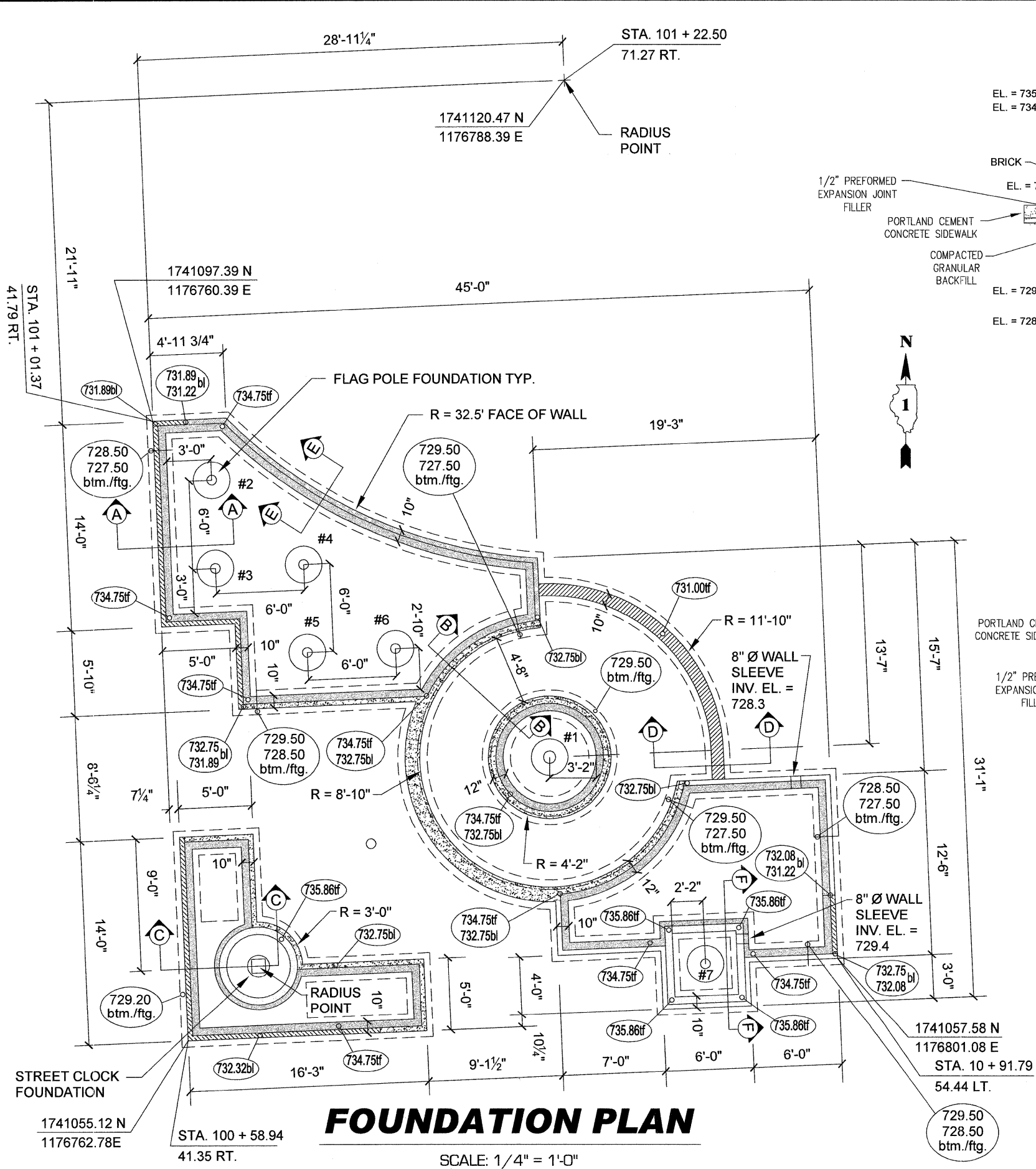
Village of CRETE
WILL COUNTY, ILLINOIS
534 EXCHANGE STREET P.O. BOX 337 Phone 708-672-5451

OVERALL SITE PLAN
ILLINOIS ROUTE 1 & EXCHANGE
STREET LANDSCAPING

F.A. RTE. 876	SECTION 06-00044-00-LS	COUNTY WILL	TOTAL SHEETS 10	SHEET NO. 5
JOB NO. C-91-051-07		CONTRACT NO. 63664		
FED. ROAD DIST. NO. 1	ILLINOIS	FED. AID PROJECT: TE-00D(728)		

SCALE: 1/4" = 1'-0"

SHEET NO. 5 OF 10 SHEETS STA. TO STA.



TECH 3 Consulting Group, Inc.
 ENGINEERS SURVEYORS
 787 West Exchange St., Crete, IL 60417
 PH: 708.672.4994 FAX: 708.672.3709
 ILLINOIS PROFESSIONAL DESIGN FIRM NO. 184-002235

USER NAME =
 PLOT SCALE =
 PLOT DATE =

DESIGNED - WJS
 DRAWN - EGH
 CHECKED - WJS
 DATE - JUNE 23, 2011

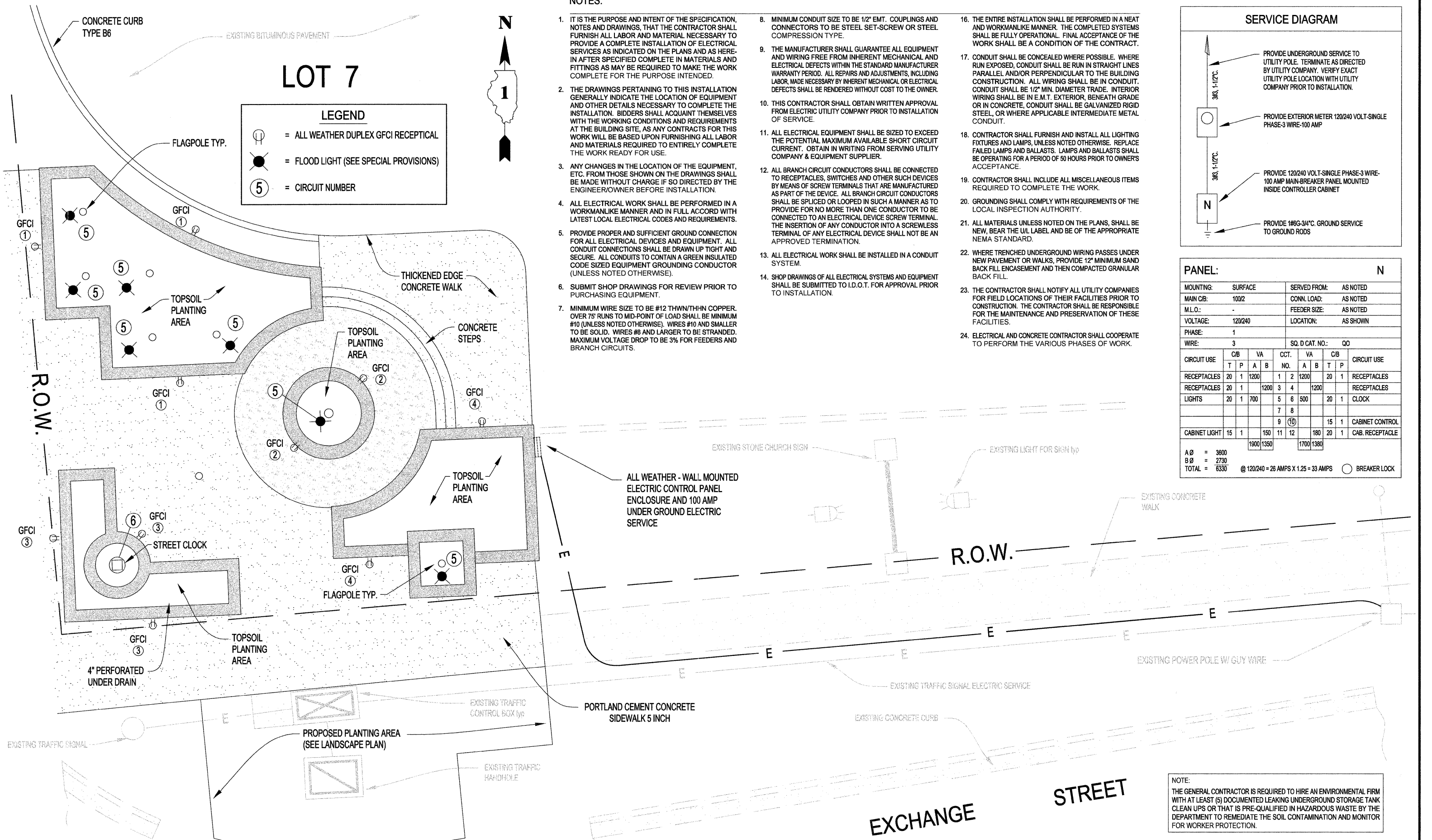
REVISED - DEC. 21, 2011
 REVISED -
 REVISED -
 REVISED -

STATE OF ILLINOIS
 DEPARTMENT OF TRANSPORTATION

Village of CRETE
 WILL COUNTY, ILLINOIS
 534 EXCHANGER STREET, P.O. BOX 397, Phone: 708-672-5431

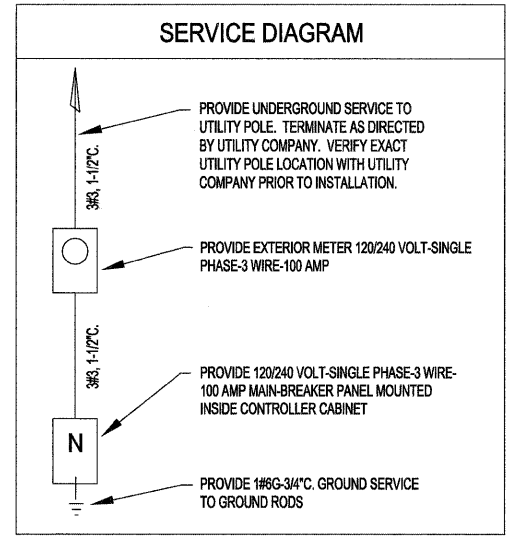
FOUNDATION PLAN & SECTIONS
 ILLINOIS ROUTE 1 & EXCHANGE
 STREET LANDSCAPING

F.A. RITE.	SECTION	COUNTY	TOTAL SHEETS	SHEET NO.
876	06-00044-004S	WILL	10	6
JOB NO. C-91-051-07		CONTRACT NO. 63664		
FED. ROAD DIST. NO. 1		ILLINOIS		
		FED. AID PROJECT: TE-00DI (728)		



NOTES:

- IT IS THE PURPOSE AND INTENT OF THE SPECIFICATION, NOTES AND DRAWINGS, THAT THE CONTRACTOR SHALL FURNISH ALL LABOR AND MATERIAL NECESSARY TO PROVIDE A COMPLETE INSTALLATION OF ELECTRICAL SERVICES AS INDICATED ON THE PLANS AND AS HEREIN AFTER SPECIFIED COMPLETE IN MATERIALS AND FITTINGS AS MAY BE REQUIRED TO MAKE THE WORK COMPLETE FOR THE PURPOSE INTENDED.
- THE DRAWINGS PERTAINING TO THIS INSTALLATION GENERALLY INDICATE THE LOCATION OF EQUIPMENT AND OTHER DETAILS NECESSARY TO COMPLETE THE INSTALLATION. BIDDERS SHALL ACQUAINT THEMSELVES WITH THE WORKING CONDITIONS AND REQUIREMENTS AT THE BUILDING SITE, AS ANY CONTRACTS FOR THIS WORK WILL BE BASED UPON FURNISHING ALL LABOR AND MATERIALS REQUIRED TO ENTIRELY COMPLETE THE WORK READY FOR USE.
- ANY CHANGES IN THE LOCATION OF THE EQUIPMENT, ETC. FROM THOSE SHOWN ON THE DRAWINGS SHALL BE MADE WITHOUT CHARGE IF SO DIRECTED BY THE ENGINEER/OWNER BEFORE INSTALLATION.
- ALL ELECTRICAL WORK SHALL BE PERFORMED IN A WORKMANLIKE MANNER AND IN FULL ACCORD WITH LATEST LOCAL ELECTRICAL CODES AND REQUIREMENTS.
- PROVIDE PROPER AND SUFFICIENT GROUND CONNECTION FOR ALL ELECTRICAL DEVICES AND EQUIPMENT. ALL CONDUIT CONNECTIONS SHALL BE DRAWN UP TIGHT AND SECURE. ALL CONDUITS TO CONTAIN A GREEN INSULATED CODE SIZED EQUIPMENT GROUNDING CONDUCTOR (UNLESS NOTED OTHERWISE).
- SUBMIT SHOP DRAWINGS FOR REVIEW PRIOR TO PURCHASING EQUIPMENT.
- MINIMUM WIRE SIZE TO BE #12 THWN/THHN COPPER. OVER 75' RUNS TO MID-POINT OF LOAD SHALL BE MINIMUM #10 (UNLESS NOTED OTHERWISE). WIRES #10 AND SMALLER TO BE SOLID. WIRES #8 AND LARGER TO BE STRANDED. MAXIMUM VOLTAGE DROP TO BE 3% FOR FEEDERS AND BRANCH CIRCUITS.
- MINIMUM CONDUIT SIZE TO BE 1/2" EMT. COUPLINGS AND CONNECTORS TO BE STEEL SET-SCREW OR STEEL COMPRESSION TYPE.
- THE MANUFACTURER SHALL GUARANTEE ALL EQUIPMENT AND WIRING FREE FROM INHERENT MECHANICAL AND ELECTRICAL DEFECTS WITHIN THE STANDARD MANUFACTURER WARRANTY PERIOD. ALL REPAIRS AND ADJUSTMENTS, INCLUDING LABOR, MADE NECESSARY BY INHERENT MECHANICAL OR ELECTRICAL DEFECTS SHALL BE RENDERED WITHOUT COST TO THE OWNER.
- THIS CONTRACTOR SHALL OBTAIN WRITTEN APPROVAL FROM ELECTRIC UTILITY COMPANY PRIOR TO INSTALLATION OF SERVICE.
- ALL ELECTRICAL EQUIPMENT SHALL BE SIZED TO EXCEED THE POTENTIAL MAXIMUM AVAILABLE SHORT CIRCUIT CURRENT. OBTAIN IN WRITING FROM SERVING UTILITY COMPANY & EQUIPMENT SUPPLIER.
- ALL BRANCH CIRCUIT CONDUCTORS SHALL BE CONNECTED TO RECEPTACLES, SWITCHES AND OTHER SUCH DEVICES BY MEANS OF SCREW TERMINALS THAT ARE MANUFACTURED AS PART OF THE DEVICE. ALL BRANCH CIRCUIT CONDUCTORS SHALL BE SPLICED OR LOOPED IN SUCH A MANNER AS TO PROVIDE FOR NO MORE THAN ONE CONDUCTOR TO BE CONNECTED TO AN ELECTRICAL DEVICE SCREW TERMINAL. THE INSERTION OF ANY CONDUCTOR INTO A SCREWLESS TERMINAL OF ANY ELECTRICAL DEVICE SHALL NOT BE AN APPROVED TERMINATION.
- ALL ELECTRICAL WORK SHALL BE INSTALLED IN A CONDUIT SYSTEM.
- SHOP DRAWINGS OF ALL ELECTRICAL SYSTEMS AND EQUIPMENT SHALL BE SUBMITTED TO I.D.O.T. FOR APPROVAL PRIOR TO INSTALLATION.
- THE ENTIRE INSTALLATION SHALL BE PERFORMED IN A NEAT AND WORKMANLIKE MANNER. THE COMPLETED SYSTEMS SHALL BE FULLY OPERATIONAL. FINAL ACCEPTANCE OF THE WORK SHALL BE A CONDITION OF THE CONTRACT.
- CONDUIT SHALL BE CONCEALED WHERE POSSIBLE. WHERE RUN EXPOSED, CONDUIT SHALL BE RUN IN STRAIGHT LINES PARALLEL AND/OR PERPENDICULAR TO THE BUILDING CONSTRUCTION. ALL WIRING SHALL BE IN CONDUIT. CONDUIT SHALL BE 1/2" MIN. DIAMETER TRADE. INTERIOR WIRING SHALL BE IN E.M.T. EXTERIOR, BENEATH GRADE OR IN CONCRETE, CONDUIT SHALL BE GALVANIZED RIGID STEEL, OR WHERE APPLICABLE INTERMEDIATE METAL CONDUIT.
- CONTRACTOR SHALL FURNISH AND INSTALL ALL LIGHTING FIXTURES AND LAMPS, UNLESS NOTED OTHERWISE. REPLACE FAILED LAMPS AND BALLASTS. LAMPS AND BALLASTS SHALL BE OPERATING FOR A PERIOD OF 50 HOURS PRIOR TO OWNERS ACCEPTANCE.
- CONTRACTOR SHALL INCLUDE ALL MISCELLANEOUS ITEMS REQUIRED TO COMPLETE THE WORK.
- GROUNDING SHALL COMPLY WITH REQUIREMENTS OF THE LOCAL INSPECTION AUTHORITY.
- ALL MATERIALS UNLESS NOTED ON THE PLANS, SHALL BE NEW, BEAR THE UL LABEL AND BE OF THE APPROPRIATE NEMA STANDARD.
- WHERE TRENCHED UNDERGROUND WIRING PASSES UNDER NEW PAVEMENT OR WALKS, PROVIDE 12" MINIMUM SAND BACK FILL ENCASEMENT AND THEN COMPACTED GRANULAR BACK FILL.
- THE CONTRACTOR SHALL NOTIFY ALL UTILITY COMPANIES FOR FIELD LOCATIONS OF THEIR FACILITIES PRIOR TO CONSTRUCTION. THE CONTRACTOR SHALL BE RESPONSIBLE FOR THE MAINTENANCE AND PRESERVATION OF THESE FACILITIES.
- ELECTRICAL AND CONCRETE CONTRACTOR SHALL COOPERATE TO PERFORM THE VARIOUS PHASES OF WORK.



PANEL: N

MOUNTING:	SURFACE	SERVED FROM:	AS NOTED
MAIN CB:	100/2	CONN. LOAD:	AS NOTED
M.L.O.:	-	FEEDER SIZE:	AS NOTED
VOLTAGE:	120/240	LOCATION:	AS SHOWN
PHASE:	1		
WIRE:	3	SQ. D CAT. NO.:	QO

CIRCUIT USE	CB				CCT. NO.	VA				CIRCUIT USE	
	T	P	A	B		A	B	T	P		
RECEPTACLES	20	1	1200		1	2	1200		20	1	RECEPTACLES
RECEPTACLES	20	1	1200		3	4	1200				RECEPTACLES
LIGHTS	20	1	700		5	6	500		20	1	CLOCK
					7	8					
CABINET LIGHT	15	1			9	10			15	1	CABINET CONTROL
					11	12					
					1900	1350		1700	1380		

A Ø = 3600
 B Ø = 2730
 TOTAL = 6330 @ 120/240 = 26 AMPS X 1.25 = 33 AMPS

○ BREAKER LOCK

NOTE:
 THE GENERAL CONTRACTOR IS REQUIRED TO HIRE AN ENVIRONMENTAL FIRM WITH AT LEAST (5) DOCUMENTED LEAKING UNDERGROUND STORAGE TANK CLEAN UPS OR THAT IS PRE-QUALIFIED IN HAZARDOUS WASTE BY THE DEPARTMENT TO REMEDIATE THE SOIL CONTAMINATION AND MONITOR FOR WORKER PROTECTION.

TECH 3 Consulting Group, Inc.
 ENGINEERS SURVEYORS
 737 West Exchange St., Crete, IL 60417
 ph 708.672.4594 fax 708.672.3739
 ILLINOIS PROFESSIONAL DESIGN FIRM NO. 184-002235

USER NAME =	DESIGNED - WJS	REVISED - DEC. 21, 2011
PLOT SCALE =	DRAWN - EGH	REVISED - JAN. 5, 2012
PLOT DATE =	CHECKED - WJS	REVISED -
	DATE - JUNE 23, 2011	REVISED -

STATE OF ILLINOIS
DEPARTMENT OF TRANSPORTATION

Village of CRETE
 WILL COUNTY, ILLINOIS
 60417
 524 EXCHANGE STREET * P.O. BOX 377 * Phone 708-672-5401

ELECTRICAL PLAN
ILLINOIS ROUTE 1 & EXCHANGE
STREET LANDSCAPING

F.A. RTE.	SECTION	COUNTY	TOTAL SHEETS	SHEET NO.
876	06-00044-00-LS	WILL	10	7
JOB NO. C-91-051-07		CONTRACT NO. 63664		
FED. ROAD DIST. NO. 1	ILLINOIS	FED. AID PROJECT: TE-0001 (728)		

SCALE: 1/4" = 1'-0"

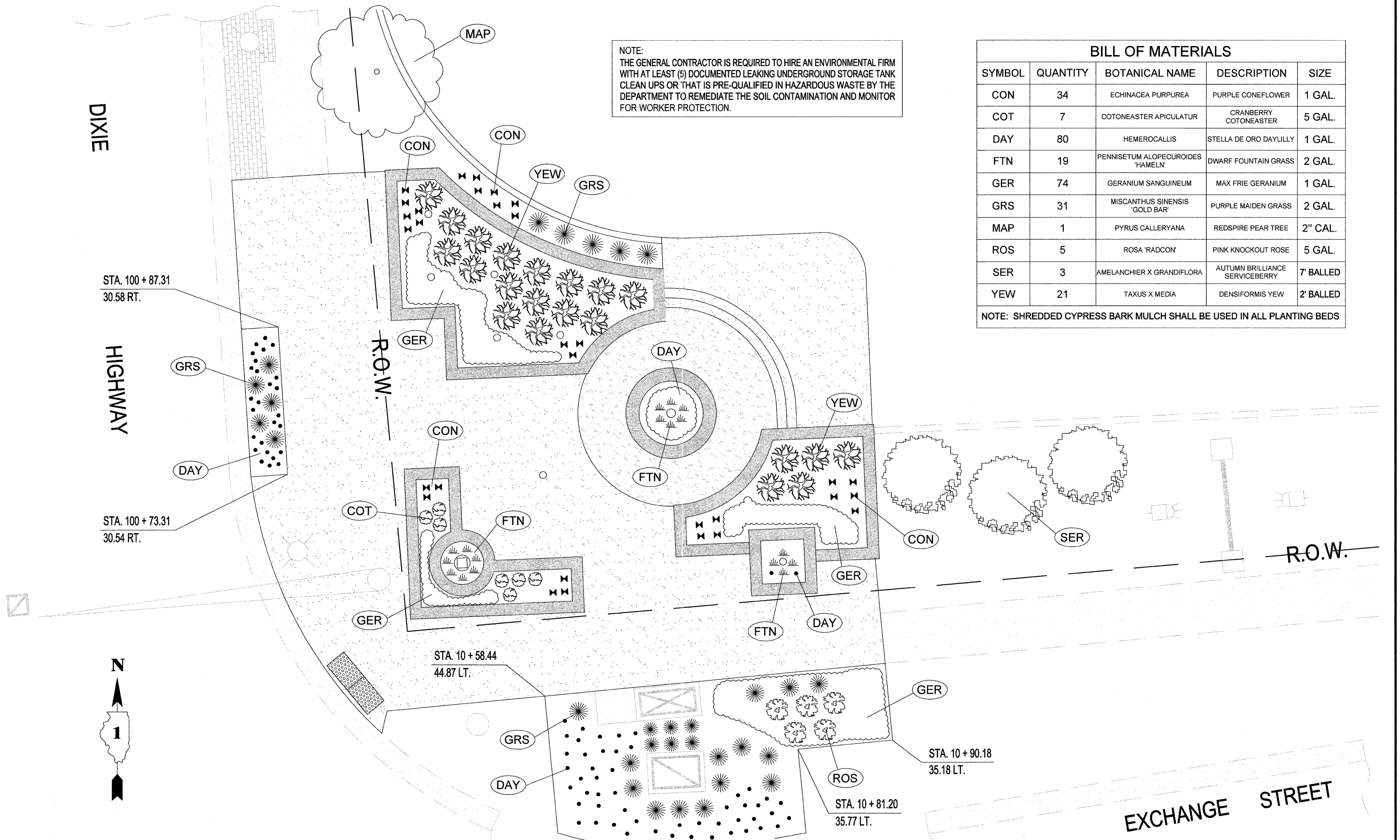
SHEET NO. 7 OF 10 SHEETS STA. - TO STA. -

BILL OF MATERIALS

SYMBOL	QUANTITY	BOTANICAL NAME	DESCRIPTION	SIZE
CON	34	ECHINACEA PURPUREA	PURPLE CONEFLOWER	1 GAL.
COT	7	COTONEASTER APICULATUR	CRANBERRY COTONEASTER	5 GAL.
DAY	80	HEMEROCALLIS	STELLA DE ORO DAYLILLY	1 GAL.
FTN	19	PENNISETUM ALOPECUROIDES 'HAMELN'	DWARF FOUNTAIN GRASS	2 GAL.
GER	74	GERANIUM SANGUINEUM	MAX FRIE GERANIUM	1 GAL.
GRS	31	MISCANTHUS SINENSIS 'GOLD BAR'	PURPLE MAIDEN GRASS	2 GAL.
MAP	1	PYRUS CALLERYANA	REDSPIRE PEAR TREE	2" CAL.
ROS	5	ROSA 'RADCON'	PINK KNOCKOUT ROSE	5 GAL.
SER	3	AMELANCHIER X GRANDIFLORA	AUTUMN BRILLIANCE SERVICEBERRY	7' BALLED
YEW	21	TAXUS X MEDIA	DENSIFORMIS YEW	2' BALLED

NOTE: SHREDDED CYPRESS BARK MULCH SHALL BE USED IN ALL PLANTING BEDS

NOTE:
THE GENERAL CONTRACTOR IS REQUIRED TO HIRE AN ENVIRONMENTAL FIRM WITH AT LEAST (5) DOCUMENTED LEAKING UNDERGROUND STORAGE TANK CLEAN UPS OR THAT IS PRE-QUALIFIED IN HAZARDOUS WASTE BY THE DEPARTMENT TO REMEDIATE THE SOIL CONTAMINATION AND MONITOR FOR WORKER PROTECTION.



TECH 3 Consulting Group, Inc.
ENGINEERS SURVEYORS
737 West Exchange St. Crete, IL 60417
ph 708.672.4894 fax 708.672.3729
ILLINOIS PROFESSIONAL DESIGN FIRM NO. 184-002235

USER NAME =	DESIGNED - WJS	REVISED - DEC. 21, 2011
	DRAWN - EGH	REVISED - JAN. 5, 2012
PLOT SCALE =	CHECKED - WJS	REVISED -
PLOT DATE =	DATE - JUNE 23, 2011	REVISED -

STATE OF ILLINOIS
DEPARTMENT OF TRANSPORTATION

Village of CRETE
WILL COUNTY, ILLINOIS
60417
524 EXCHANGE STREET * P.O. BOX 337 * Phone 708-672-5401

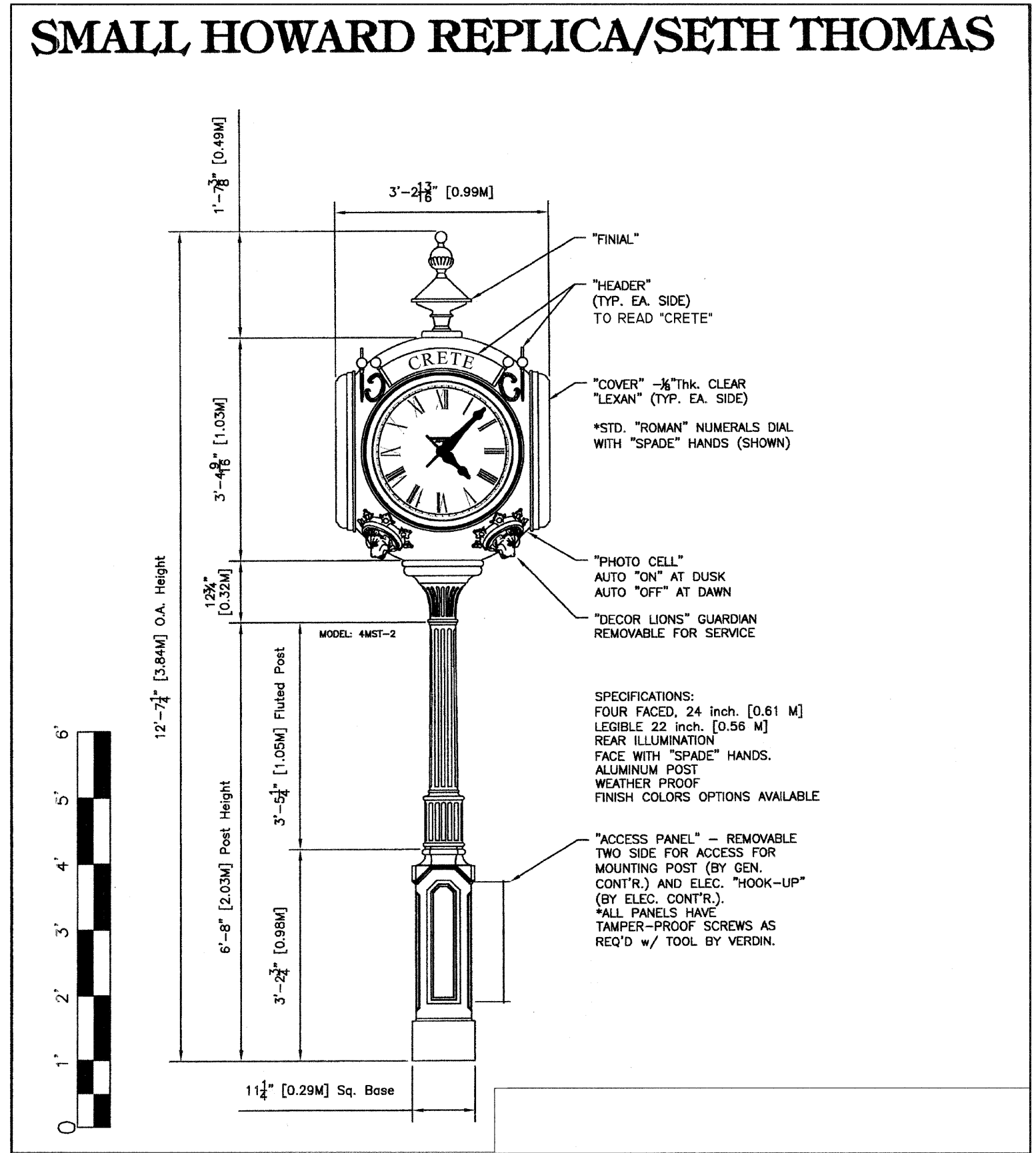
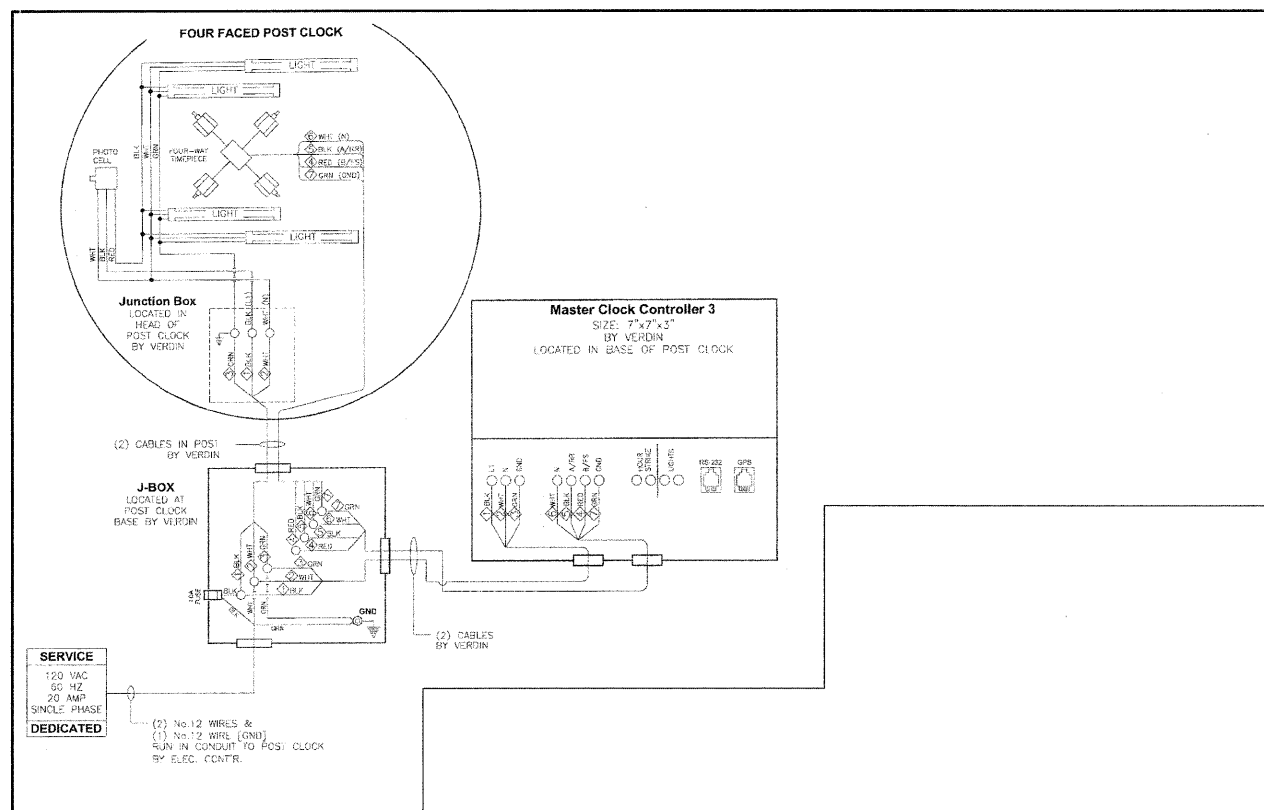
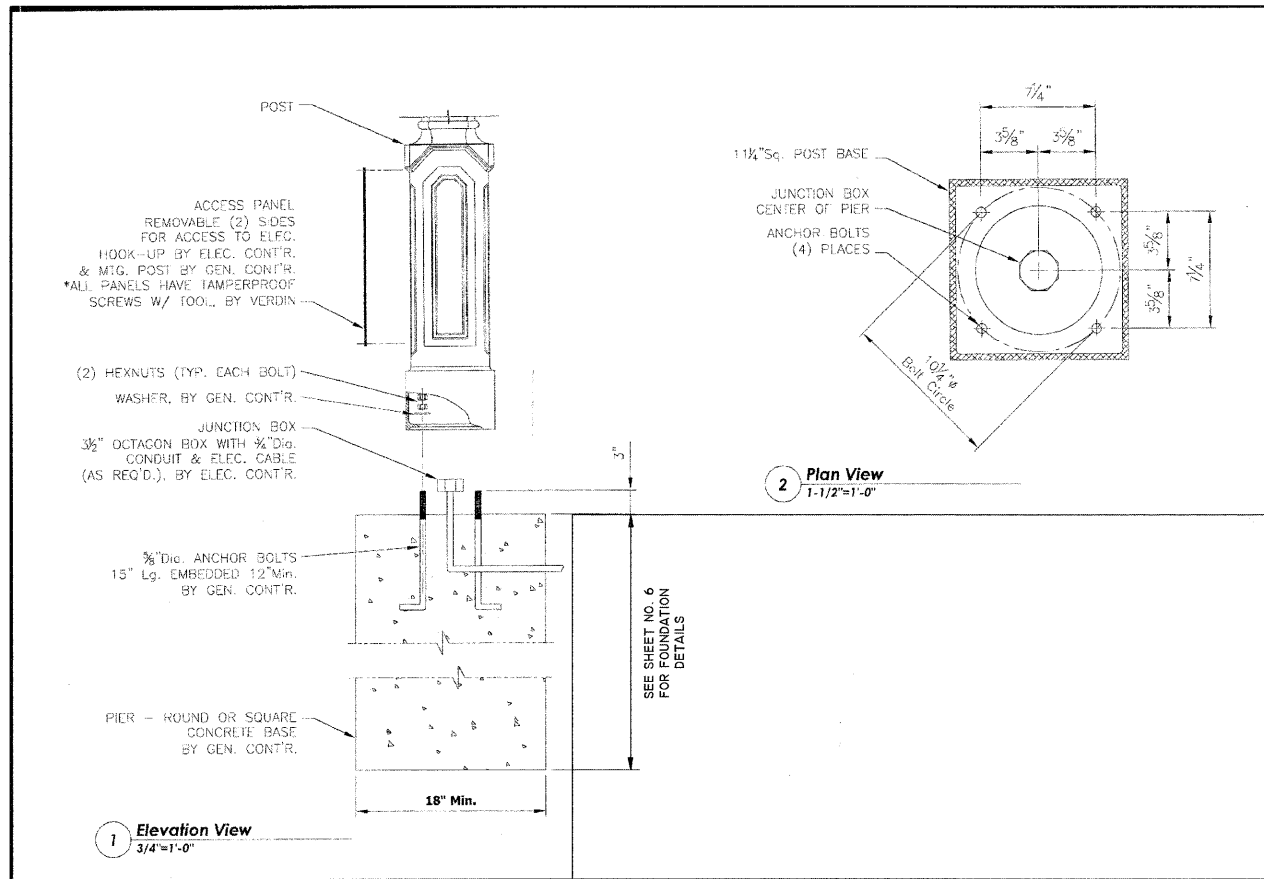
LANDSCAPE PLAN
ILLINOIS ROUTE 1 & EXCHANGE STREET LANDSCAPING

F.A. RTE.	SECTION	COUNTY	TOTAL SHEETS	SHEET NO.
876	06-00044-00-LS	WILL	10	8
JOB NO. C-91-051-07		CONTRACT NO. 63664		
FED. ROAD DIST. NO. 1	ILLINOIS	FED. AID PROJECT: TE-00D1 (728)		

SCALE: 1/4" = 1'-0"

SHEET NO. 8 OF 10 SHEETS STA. TO STA.

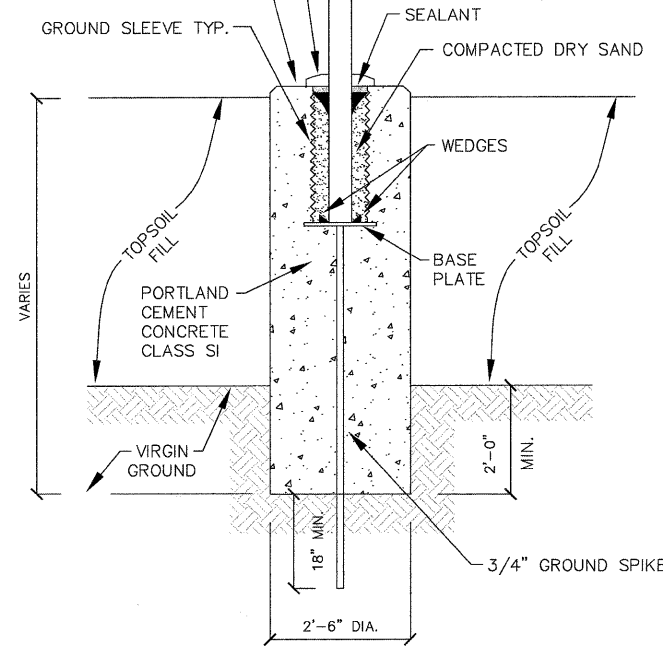
SMALL HOWARD REPLICA/SETH THOMAS



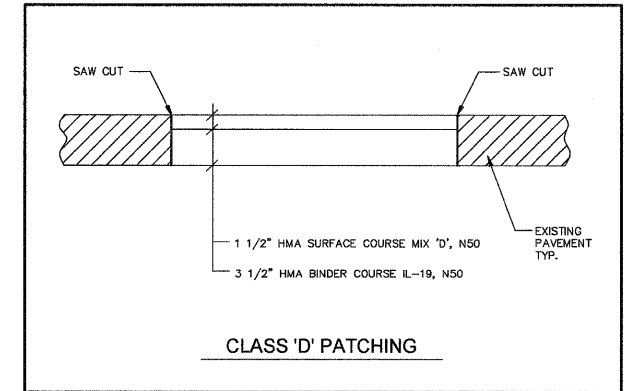
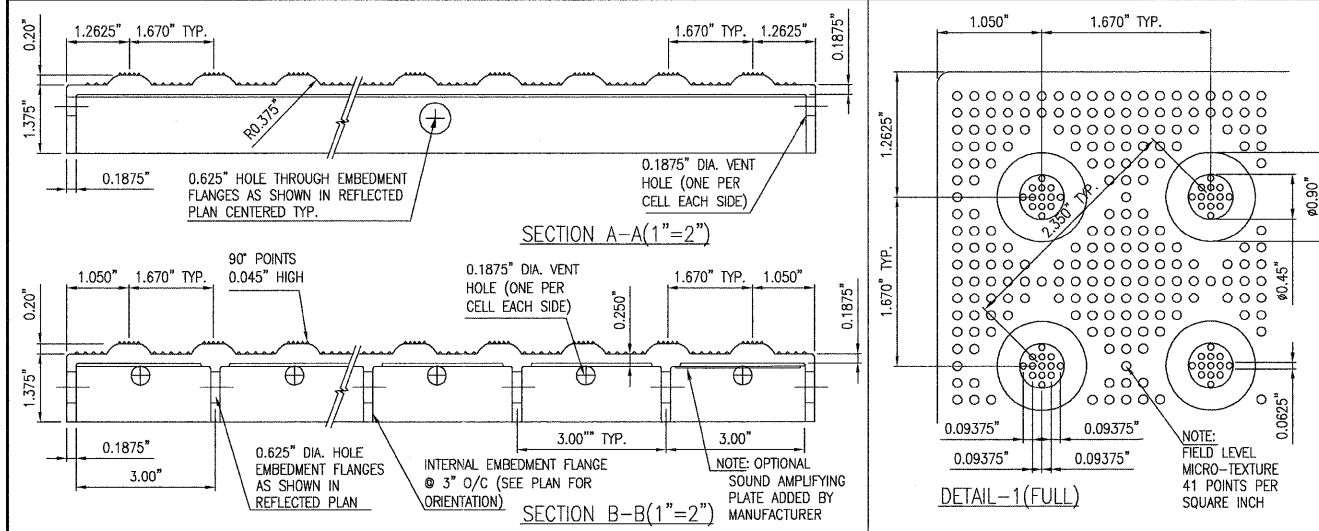
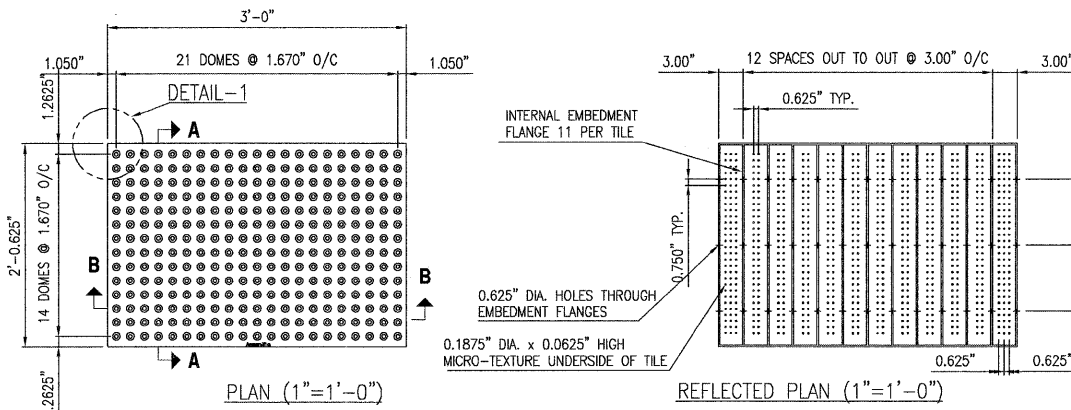
ALUMINUM COLLAR TO MATCH POLE FINISH. COLLAR TO BE AT LEAST 1" GREATER THAN SLEEVE DIAMETER.

FLAG POLES 1 THROUGH 6 ELEV. = 735.20 POLE NO. 7 ELEV. = 736.30

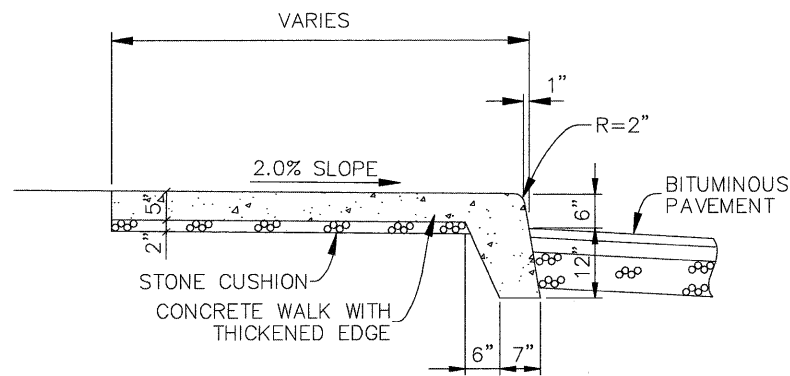
ALUMINUM FLAG POLE NO. 1 SHALL BE 25' WITH A 6" BUTT AND A 10" DIA. X 30" GROUND SLEEVE. ALUMINUM FLAG POLE NOS. 2 THROUGH 7 SHALL BE 20' WITH A 5" BUTT AND A 8" DIA. X 30" GROUND SLEEVE.



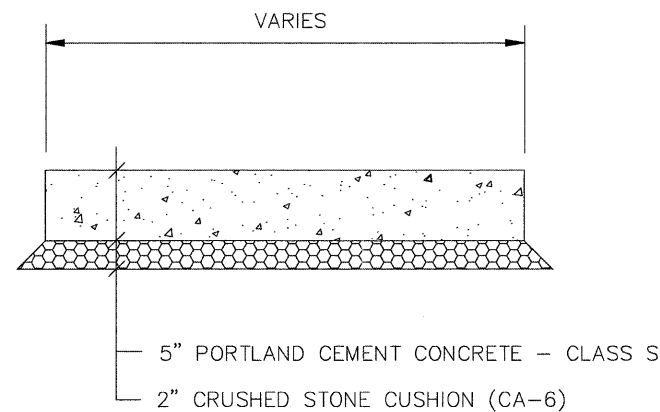
FLAG POLE FOUNDATION DETAIL



CLASS 'D' PATCHING



THICKENED EDGE CONCRETE WALK
NO SCALE



CONCRETE WALK DETAIL

HOT-MIX ASPHALT MIXTURE REQUIREMENTS

MIXTURE TYPE	AIR VOIDS @ Ndes
CLASS D PATCHES	
HMA SURFACE COURSE, MIX "D", N50, 1 1/2" (IL-9.5 mm)	4% @ 50 GYR.
HMA BINDER COURSE, IL-19, N50, 3 1/2"	4% @ 50 GYR.

NOTE:

THE UNIT WEIGHT USED TO CALCULATE ALL HMA SURFACE MIXTURE QUANTITIES IS 112 LBS./SQ. YD./IN.. THE "AC TYPE" FOR NON-POLYMERIZED HMA SHALL BE "PG. 64-22" UNLESS MODIFIED BY DISTRICT ONE SPECIAL PROVISIONS FOR "PERCENT OF RAP" SEE SPECIAL PROVISIONS.