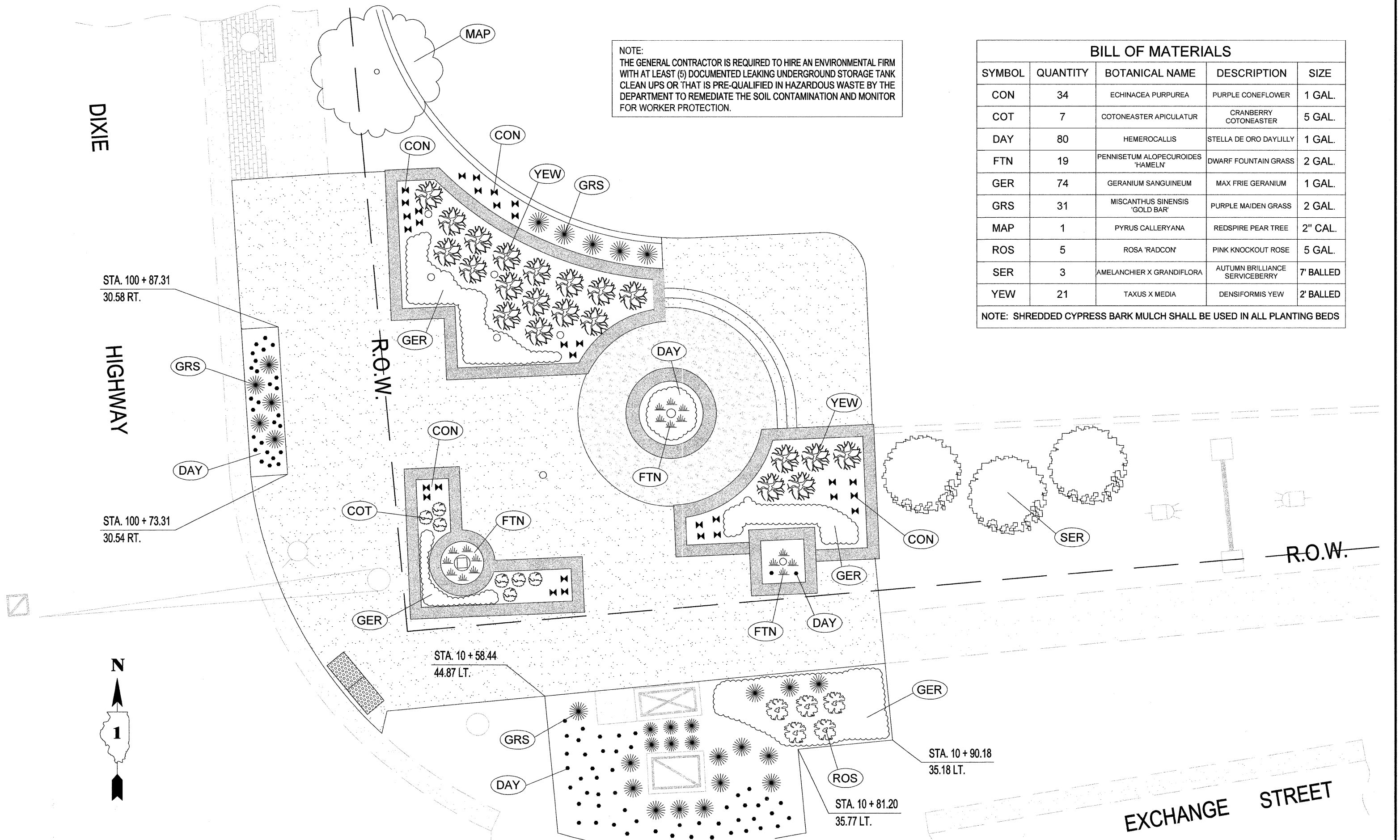


BILL OF MATERIALS

SYMBOL	QUANTITY	BOTANICAL NAME	DESCRIPTION	SIZE
CON	34	ECHINACEA PURPUREA	PURPLE CONEFLOWER	1 GAL.
COT	7	COTONEASTER APICULATUR	CRANBERRY COTONEASTER	5 GAL.
DAY	80	HEMEROCALLIS	STELLA DE ORO DAYLILLY	1 GAL.
FTN	19	PENNISETUM ALOPECUROIDES 'HAMELN'	DWARF FOUNTAIN GRASS	2 GAL.
GER	74	GERANIUM SANGUINEUM	MAX FRIE GERANIUM	1 GAL.
GRS	31	MISCANTHUS SINENSIS 'GOLD BAR'	PURPLE MAIDEN GRASS	2 GAL.
MAP	1	PYRUS CALLERYANA	REDSPIRE PEAR TREE	2" CAL.
ROS	5	ROSA 'RADCON'	PINK KNOCKOUT ROSE	5 GAL.
SER	3	AMELANCHIER X GRANDIFLORA	AUTUMN BRILLIANCE SERVICEBERRY	7' BALLED
YEW	21	TAXUS X MEDIA	DENSIFORMIS YEW	2' BALLED

NOTE: SHREDDED CYPRESS BARK MULCH SHALL BE USED IN ALL PLANTING BEDS

NOTE:
THE GENERAL CONTRACTOR IS REQUIRED TO HIRE AN ENVIRONMENTAL FIRM WITH AT LEAST (5) DOCUMENTED LEAKING UNDERGROUND STORAGE TANK CLEAN UPS OR THAT IS PRE-QUALIFIED IN HAZARDOUS WASTE BY THE DEPARTMENT TO REMEDIATE THE SOIL CONTAMINATION AND MONITOR FOR WORKER PROTECTION.



TECH 3 Consulting Group, Inc.
ENGINEERS SURVEYORS
737 West Exchange St., Crete, IL 60417
ph 708.672.4894 fax 708.672.3729
ILLINOIS PROFESSIONAL DESIGN FIRM NO. 184-002235

USER NAME =	DESIGNED - WJS	REVISED - DEC. 21, 2011
	DRAWN - EGH	REVISED - JAN. 5, 2012
PLOT SCALE =	CHECKED - WJS	REVISED -
PLOT DATE =	DATE - JUNE 23, 2011	REVISED -

STATE OF ILLINOIS
DEPARTMENT OF TRANSPORTATION

Village of CRETE
WILL COUNTY, ILLINOIS
60417
324 EXCHANGE STREET * P.O. BOX 337 * Phone 708-672-5401

LANDSCAPE PLAN
ILLINOIS ROUTE 1 & EXCHANGE STREET LANDSCAPING

F.A. RTE.	SECTION	COUNTY	TOTAL SHEETS	SHEET NO.
876	06-00044-00-LS	WILL	10	8
JOB NO. C-91-051-07		CONTRACT NO. 63664		
FED. ROAD DIST. NO. 1	ILLINOIS	FED. AID PROJECT: TE-00DI (728)		

SCALE: 1/4" = 1'-0"

SHEET NO. 8 OF 10 SHEETS STA. TO STA.