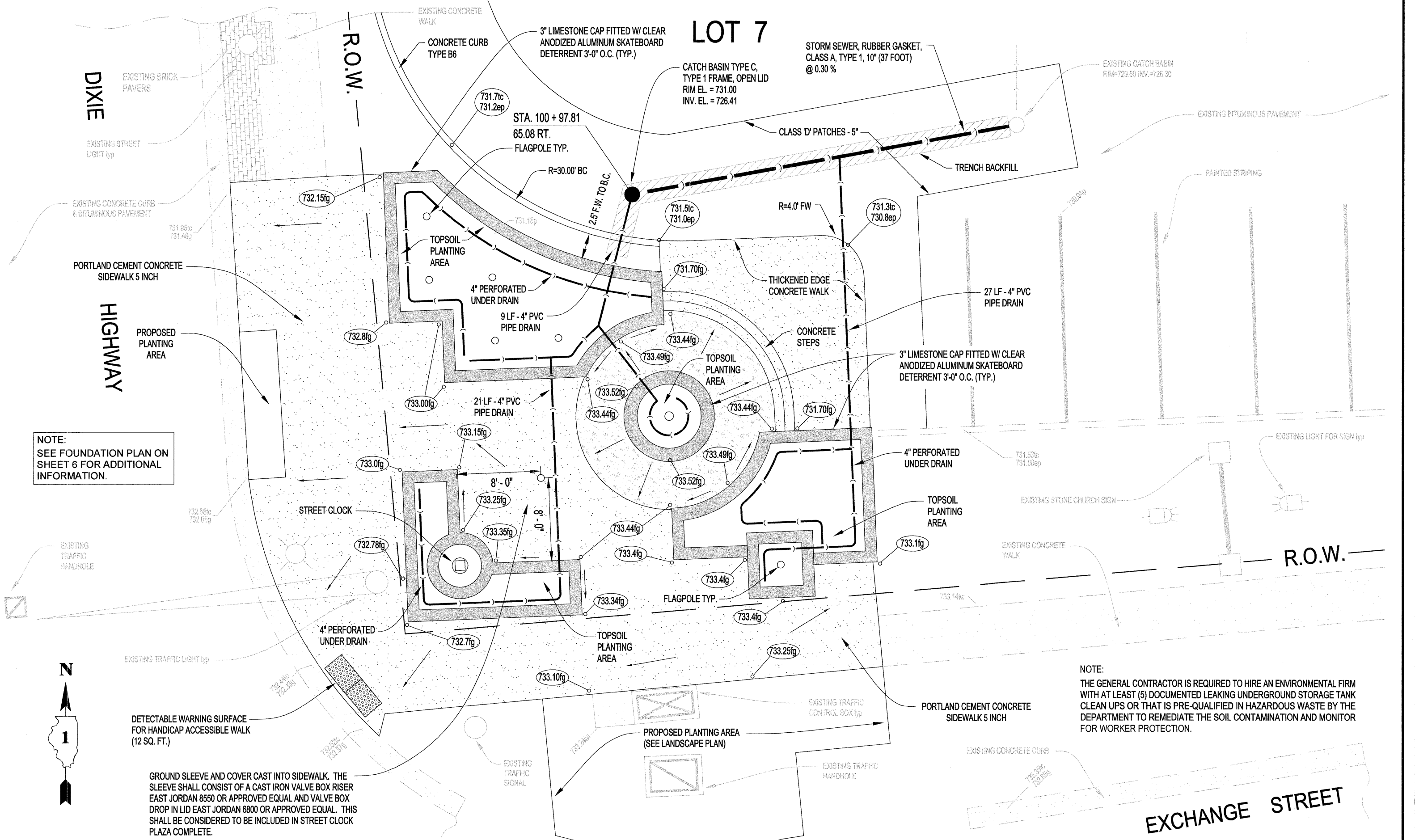


LOT 7



NOTE:
SEE FOUNDATION PLAN ON
SHEET 6 FOR ADDITIONAL
INFORMATION.

NOTE:
THE GENERAL CONTRACTOR IS REQUIRED TO HIRE AN ENVIRONMENTAL FIRM
WITH AT LEAST (5) DOCUMENTED LEAKING UNDERGROUND STORAGE TANK
CLEAN UPS OR THAT IS PRE-QUALIFIED IN HAZARDOUS WASTE BY THE
DEPARTMENT TO REMEDIATE THE SOIL CONTAMINATION AND MONITOR
FOR WORKER PROTECTION.

GROUND SLEEVE AND COVER CAST INTO SIDEWALK. THE
SLEEVE SHALL CONSIST OF A CAST IRON VALVE BOX RISER
EAST JORDAN 8550 OR APPROVED EQUAL AND VALVE BOX
DROP IN LID EAST JORDAN 6800 OR APPROVED EQUAL. THIS
SHALL BE CONSIDERED TO BE INCLUDED IN STREET CLOCK
PLAZA COMPLETE.

TECH 3 Consulting Group, Inc.
ENGINEERS SURVEYORS
737 West Exchange St., Crete, IL 60417
PH 708.672.4894 FAX 708.672.3729
ILLINOIS PROFESSIONAL DESIGN FIRM NO. 184-002235

USER NAME =	DESIGNED - WJS	REVISED - DEC. 21, 2011
PLOT SCALE =	DRAWN - EGH	REVISED - JAN. 5, 2012
PLOT DATE =	CHECKED - WJS	REVISED -
	DATE - JUNE 23, 2011	REVISED -

STATE OF ILLINOIS
DEPARTMENT OF TRANSPORTATION

Village of CRETE
WILL COUNTY, ILLINOIS
534 EXCHANGE STREET P.O. BOX 337 Phone 708-672-5451

OVERALL SITE PLAN
ILLINOIS ROUTE 1 & EXCHANGE
STREET LANDSCAPING

F.A. RTE. 876	SECTION 06-00044-00-LS	COUNTY WILL	TOTAL SHEETS 10	SHEET NO. 5
JOB NO. C-91-051-07		CONTRACT NO. 63664		
FED. ROAD DIST. NO. 1	ILLINOIS	FED. AID PROJECT: TE-00D(728)		

SCALE: 1/4" = 1'-0"

SHEET NO. 5 OF 10 SHEETS STA. TO STA.