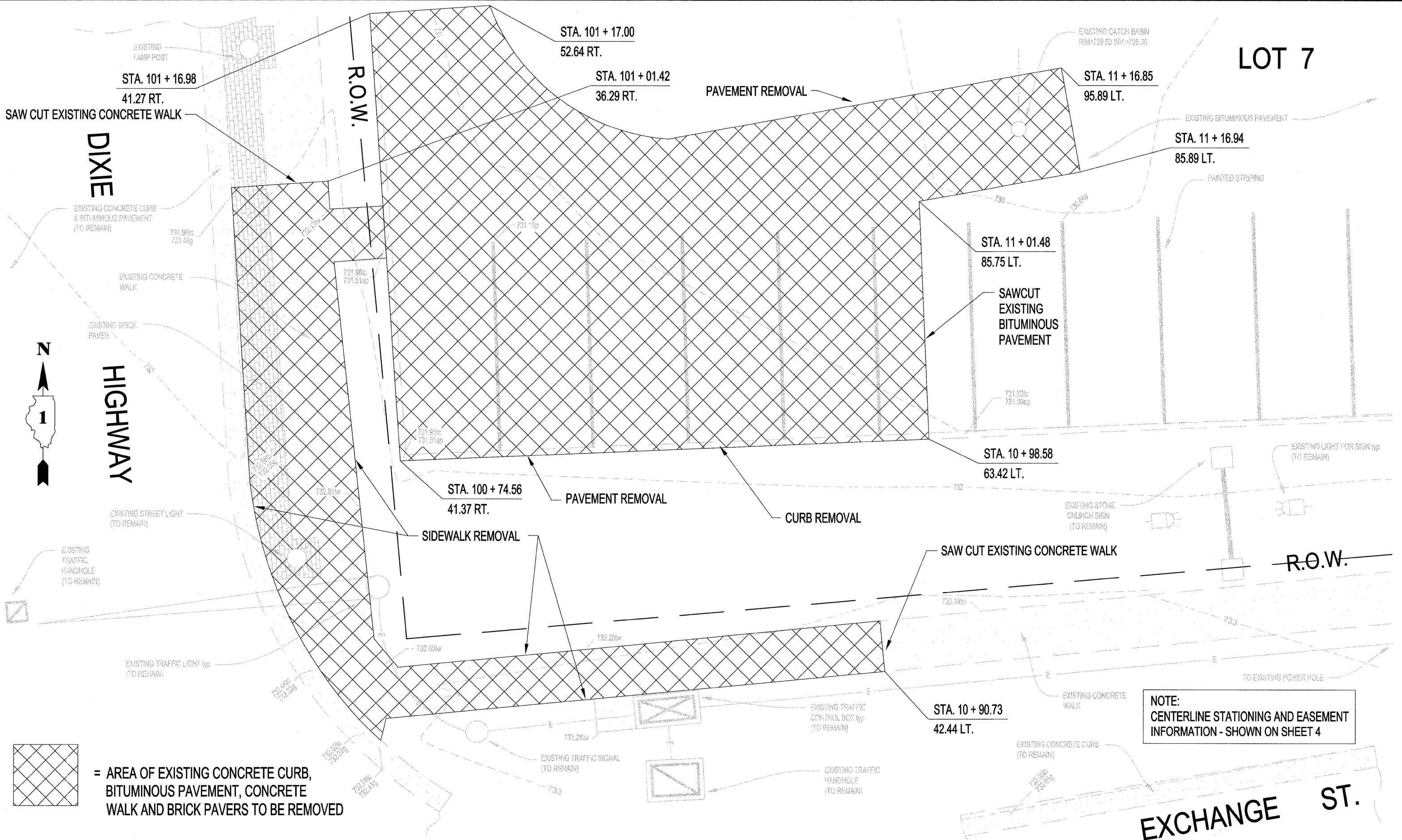
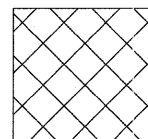


LOT 7




 = AREA OF EXISTING CONCRETE CURB, BITUMINOUS PAVEMENT, CONCRETE WALK AND BRICK PAVERS TO BE REMOVED

TECH 3 Consulting Group, Inc.
ENGINEERS SURVEYORS
737 West Exchange St. Chgo. IL 60617
ph 708.672.4894 fax 708.672.3728
ILLINOIS PROFESSIONAL DESIGN FIRM NO. 184-02235

USER NAME =
DESIGNED - WJS
DRAWN - EGH
PLOT SCALE =
CHECKED - WJS
PLOT DATE =
DATE - JUNE 23, 2011

REVISED - DEC. 21, 2011
REVISED -
REVISED -
REVISED -

STATE OF ILLINOIS
DEPARTMENT OF TRANSPORTATION

 Village of CRETE
WILL COUNTY, ILLINOIS
60417
524 EXCHANGE STREET • P.O. BOX 337 • Phone 708-672-5431

DEMOLITION SITE PLAN
ILLINOIS ROUTE 1 & EXCHANGE
STREET LANDSCAPING

F.A. RTE. 876	SECTION 06-00044-00-LS	COUNTY WILL	TOTAL SHEETS 10	SHEET NO. 3
JOB NO. C-91-051-07		CONTRACT NO. 63664		
FED. ROAD DIST. NO. 1		ILLINOIS		
TO STA. -		FED. AID PROJECT: TE-0001 (728)		

SCALE: 1/4" = 1'-0" SHEET NO. 3 OF 10 SHEETS