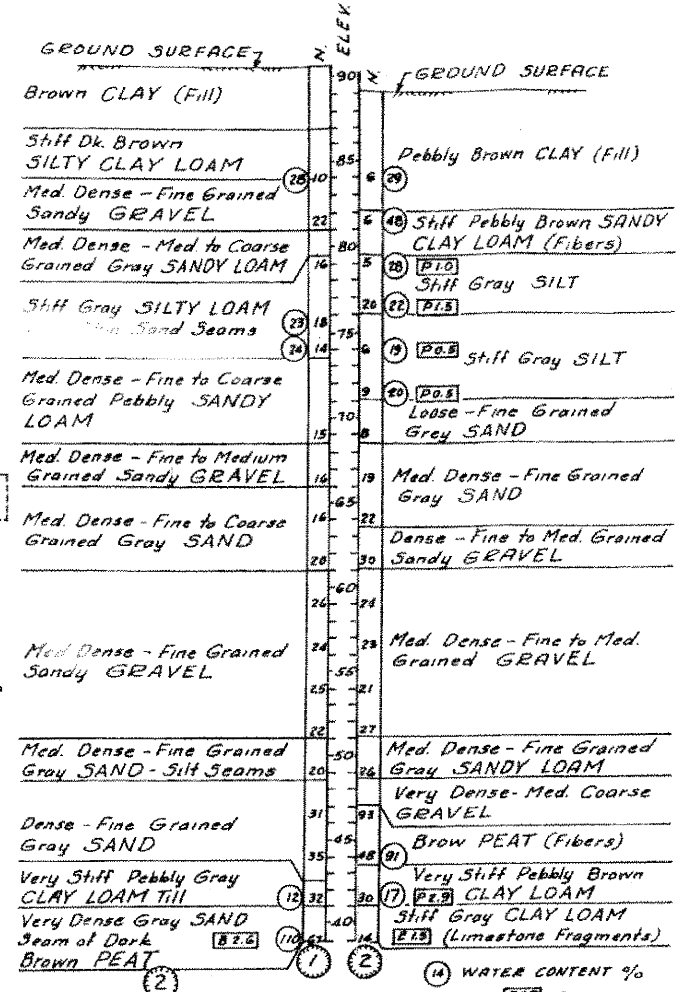
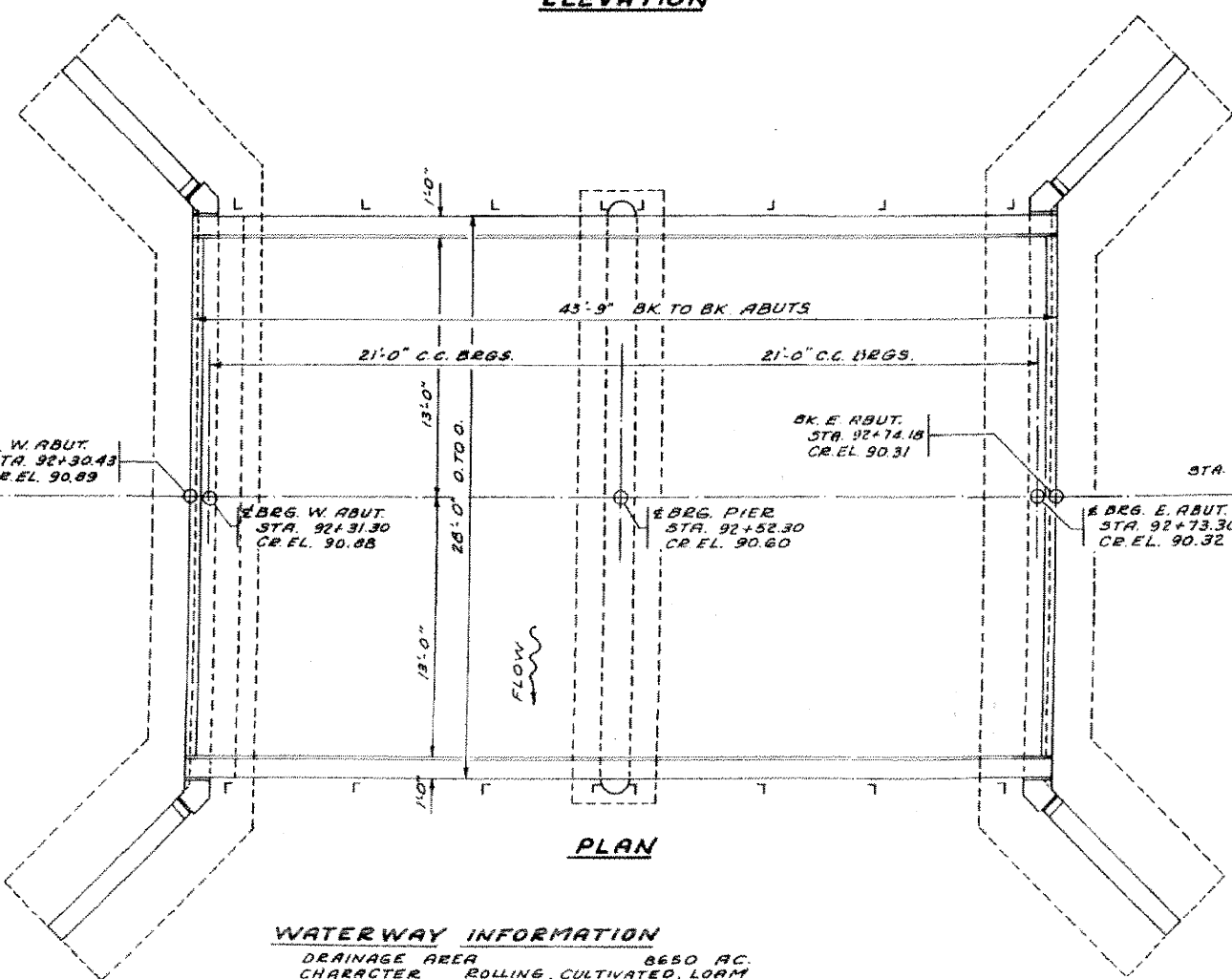
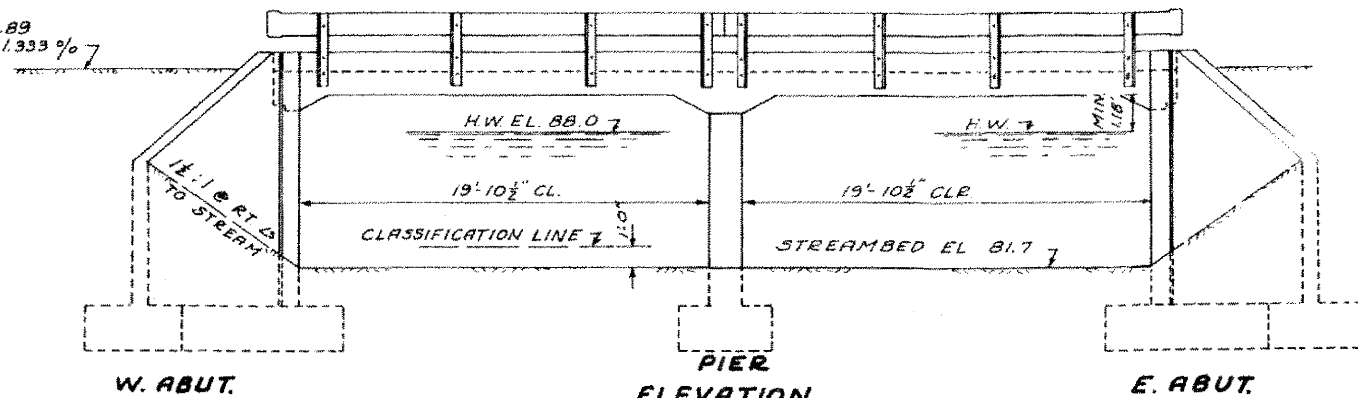


B.M. #1- BR. SPK. P.P. LT. STA. 93+19- ELEV. 86.22

EXISTING STRUCTURE- CONCRETE ARCH
SPAN- 30 FT. ROADWAY- 18 FT.
TO BE REMOVED BY CONTRACTOR

SALVAGE- NONE

CROWN EL. 90.89
GRADIENT- 1.333 %



BORING DATA
NOTE: BORING DATA ARE SHOWN ON THE PLANS AS A GUIDE ONLY TO BIDDERS IN ESTIMATING SOIL CONDITIONS WHICH MAY BE ENCOUNTERED IN THE WORK.
N- BLOWS PER FOOT OF PENETRATION OF SAMPLING SPOON - HAMMER.
WTS 350 LBS. DROP - 12 INCHES.
QU - UNCONFINED COMPRESSIVE STRESS IN TONS PER SQUARE FOOT

TOTAL BILL OF MATERIAL

ITEM	UNIT	SUPER	SUBASTE
CLASS X CONCRETE	CUYDS	516	1091
REINFORCEMENT BARS	LBS.	10,140	7,280
METAL PLATE BRIDGE RAIL	LIN. FT.	81	
FURN. UNTR. PILES - UP TO 30 FT.	LIN. FT.		1050
DRIVING TIMBER PILES	LIN. FT.		1050
TEST PILES - UNTR. TIMBER	LIN. FT.		3
CLASS A EXCAV. FOR STRUCTURES	CUYDS		73
CLASS B EXCAV. FOR STRUCTURES	CUYDS		226
NAME PLATES	EA.	1	
REMOVAL OF EXIST. STRUCTURES	EA.		

BURTON BRIDGE
KANE COUNTY
ELGIN ROAD DISTRICT
SECTION 107 BTR
STATION 92+52.30

APPROVED BY:
AUG. 19, 1963
[Signature]

PLANS PREPARED BY
CORDES
CONSULTING ENGINEER.
2415 CHARLES STREET
ROCKFORD, ILLINOIS

46-6-1-5080

NOTE:
SOIL BORING NO. AND LOCATION

STA. 92+52.30
OTTER CREEK
SEC. 107 BTR. BUILT 196
ELGIN ROAD DISTRICT
KANE COUNTY
LOADING H15-512

SEE STD. 2113
NAME PLATE LETTERING

WATERWAY INFORMATION

DRAINAGE AREA	8650 AC.
CHARACTER	ROLLING, CULTIVATED, LOAM
PRESENT OPENING	160 SQ. FT.
REQUIRED OPENING	250 SQ. FT.
PROPOSED OPENING	250 SQ. FT.

DESIGN STRESSES
S₁ SUPERSTRUCTURE 1400 P.S.I.
S₂ SUBSTRUCTURE 1000 P.S.I.
S₃ REINFORCEMENT BARS 20,000 P.S.I.

LOCATION SKETCH

H15-512 LOADING

FOR REFERENCE ONLY

FILE NAME = P:\CUBBEL WEST - Projects\22089\09-4873 - Hopper\PIE.CAD\1\0.dgn\Sheet\EXR-01.dgn

WILLS BURKE KELSEY ASSOCIATES LTD.
116 West Main Street, Suite 201
St. Charles, Illinois 60174

USER NAME = nparris	DESIGNED -	REVISED -
PLOT SCALE =	DRAWN -	REVISED -
PLOT DATE = 12/16/2011	CHECKED - RPD	REVISED -
	DATE - 12/19/11	REVISED -

STATE OF ILLINOIS
DEPARTMENT OF TRANSPORTATION

EXISTING STRUCTURE PLANS
FOR REFERENCE ONLY
SCALE: SHEET NO. 53 OF 80 SHEETS STA. TO STA.

T.R. RTE.	SECTION	COUNTY	TOTAL SHEETS	SHEET NO.
2442	04-08107-00-BR	KANE	80	53
CONTRACT NO. 63644				

FED. ROAD DIST. NO. ILLINOIS FED. AID PROJECT