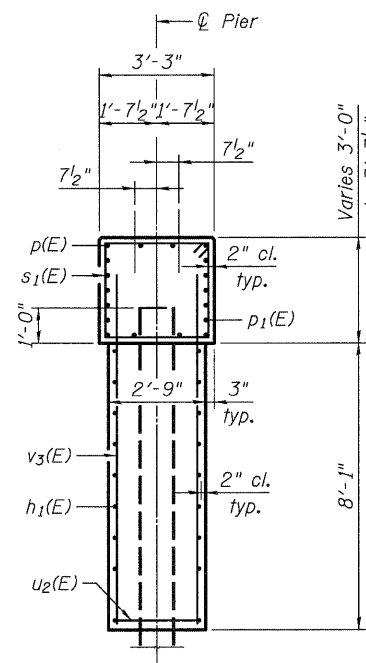
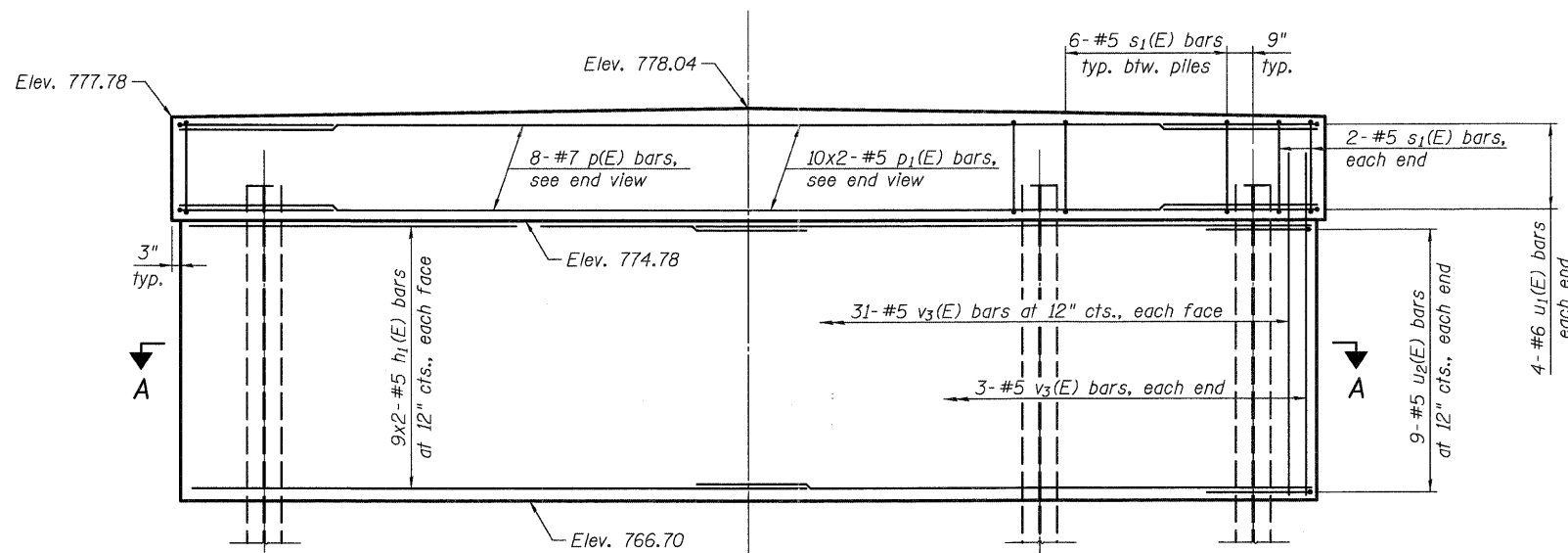


TOP PLAN

Notes:
 Space reinforcement in pier cap to miss beam anchor dowels.
 The Steel H-Piles shall be according to AASHTO M270, Grade 50. For details of piles, see sheet 15 of 17.
 All exposed edges shall have standard 3/4" chamfer except as noted.



END VIEW

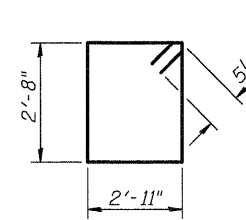


ELEVATION

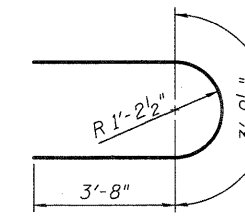
(Looking Upstation)

MINIMUM BAR LAP

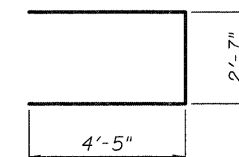
#5 bar = 3'-3"



BAR s1(E)



BAR u2(E)



BAR u1(E)

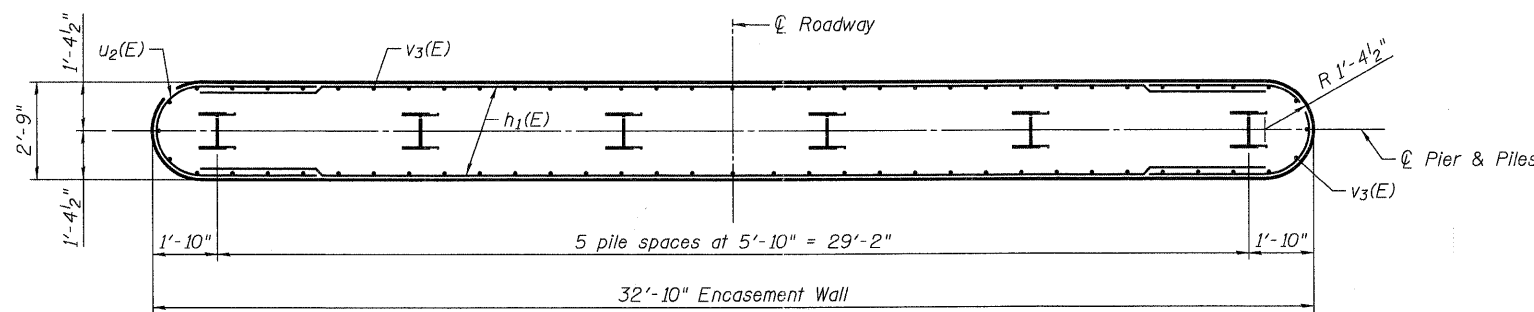
BILL OF MATERIAL

Bar	No.	Size	Length	Shape
h1(E)	36	#5	16'-8"	—
p(E)	8	#7	33'-0"	—
p1(E)	20	#5	18'-2"	—
s1(E)	34	#5	12'-1"	□
u1(E)	8	#6	11'-5"	⊔
u2(E)	18	#5	11'-2"	U
v3(E)	68	#5	10'-1"	—
Cofferdam Excavation		Cu. Yd.	81	
Cofferdam (Type 1) (Location-1)		Each	1	
Concrete Structures		Cu. Yd.	39.1	
Reinforcement Bars, Epoxy Coated		Pound	3,170	
Furnishing Steel Piles, HP 12x53		Foot	325	
Driving Piles		Foot	325	
Test Pile Steel HP 12x53		Each	1	
Pile Shoes		Each	6	

Bars indicated thus 10 x 2-#5 indicates 10 lines of bars with 2 lengths per line.

PILE DATA

Type: Steel HP 12x53
 Nominal Required Bearing: 419 kips
 Factored Resistance Available: 209 kips
 Est. Length: 65'
 No. Production Piles: 5
 No. Test Piles: 1



SECTION A-A

FILE NAME = PACBDEL WEST Projects\2009\09-0873_Hospita\IT\Structural\Drawings\PIers\045188-6364-01-1-Pier.edg

WILLS BURKE KELSEY ASSOCIATES LTD.
 118 West Main Street, Suite 201
 St. Charles, Illinois 60174

USER NAME = nparis	DESIGNED - DLS	REVISED -
PLOT SCALE =	CHECKED - AEU	REVISED -
PLOT DATE = 12/16/2011	DRAWN - DLS	REVISED -
	CHECKED - AEU	REVISED -

**STATE OF ILLINOIS
 DEPARTMENT OF TRANSPORTATION**

**PIER
 STRUCTURE NO. 045-3180**

SHEET NO. 14 OF 17 SHEETS

T.R. RTE.	SECTION	COUNTY	TOTAL SHEETS	SHEET NO.
2442	04-08107-00-BR	KANE	80	48
FED. ROAD DIST. NO. ILLINOIS FED. AID PROJECT			CONTRACT NO. 63644	