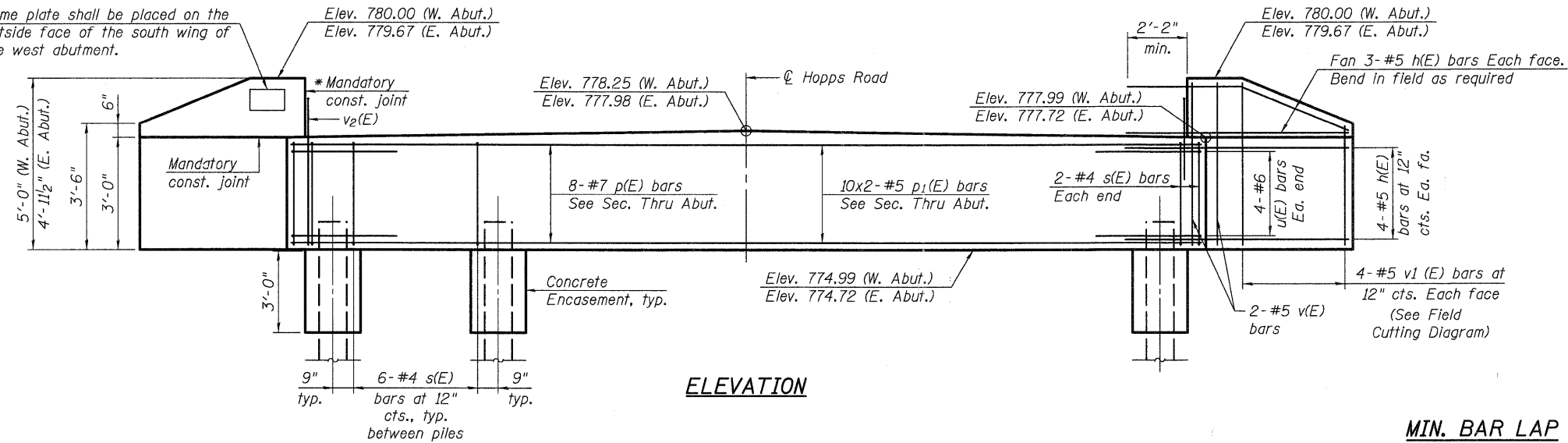


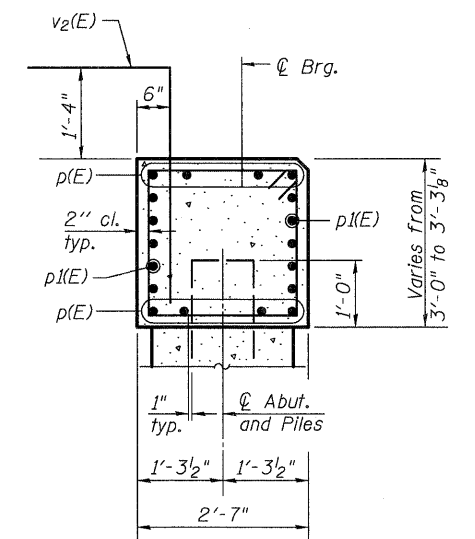
\* Cast top of wingwall flush with exterior beam face after beams have been erected.

Name plate shall be placed on the outside face of the south wing of the west abutment.

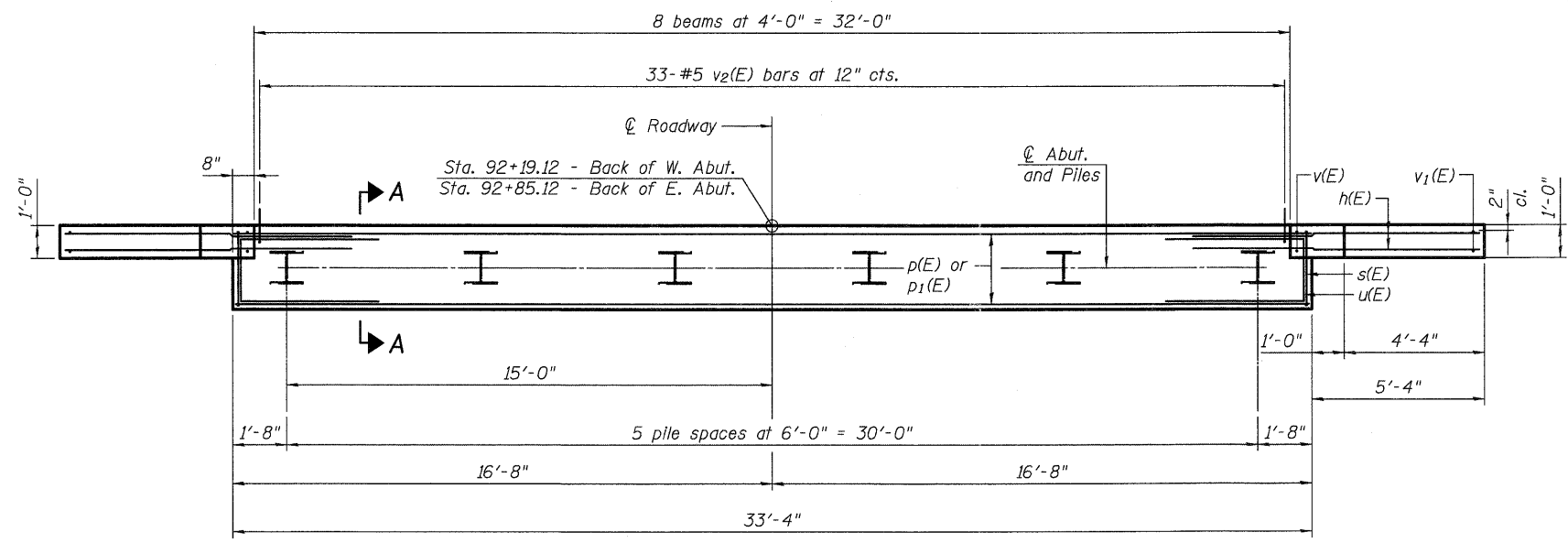


**ELEVATION**

**MIN. BAR LAP**  
#5 bars = 3'-3"



**SECTION A-A**

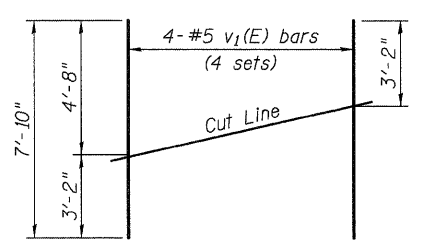


**PLAN**

**PILE DATA**

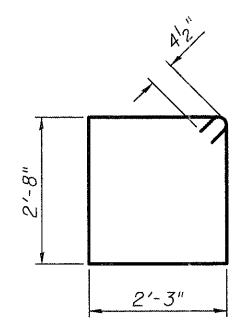
**West Abutment**  
Type: Steel HP 12x53  
Nominal Required Bearing: 419 kips  
Factored Resistance Available: 230 kips  
Est. Length: 66'  
No. Production Piles: 5  
No. Test Piles: 1

**East Abutment**  
Type: Steel HP 12x53  
Nominal Required Bearing: 419 kips  
Factored Resistance Available: 230 kips  
Est. Length: 65'  
No. Production Piles: 5  
No. Test Piles: 1

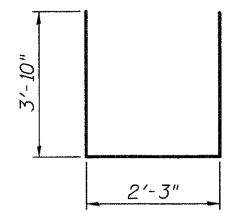


**FIELD CUTTING DIAGRAM**

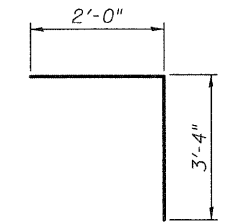
Order v1(E) bars full length. Cut as shown and use remainder of bars in opposite face.



**BAR s(E)**



**BAR u(E)**



**BAR v2(E)**

**BILL OF MATERIAL**

Bar	No.	Size	Length	Shape
h(E)	56	#5	8'-0"	—
p(E)	16	#7	33'-0"	—
p1(E)	40	#5	18'-2"	—
s(E)	68	#4	10'-7"	□
u(E)	16	#6	9'-11"	—
v(E)	16	#5	4'-8"	—
v1(E)	16	#5	7'-10"	—
v2(E)	66	#5	5'-4"	└
Structure Excavation		Cu. Yd.	218	
Concrete Structures		Cu. Yd.	23.7	
Concrete Encasement		Cu. Yd.	4.2	
Reinforcement Bars, Epoxy Coated		Pound	3,870	
Furnishing Steel Piles, HP 12x53		Foot	655	
Driving Piles		Foot	655	
Test Pile Steel HP 12x53		Each	2	
Pile Shoes		Each	12	

Bars indicated thus 10 x 2-#5 indicates 10 lines of bars with 2 lengths per line.  
For details of piles and Concrete Encasement, see Sheet 15 of 17.

FILE NAME = P:\CIBBEL WEST Projects\2009\09-0973 Hopps\PII\Structural\Drawings\045188-6364-013-Abutment.dwg

**WILLS BURKE KELSEY ASSOCIATES LTD.**  
116 West Main Street, Suite 201  
St. Charles, Illinois 60174

USER NAME = nparris	DESIGNED - DLS	REVISED -
PLOT SCALE =	CHECKED - AEU	REVISED -
PLOT DATE = 12/16/2011	DRAWN - DLS	REVISED -
	CHECKED - AEU	REVISED -

**STATE OF ILLINOIS  
DEPARTMENT OF TRANSPORTATION**

**ABUTMENTS  
STRUCTURE NO. 045-3180**

SHEET NO. 13 OF 17 SHEETS

T.R. RTE. 2442	SECTION 04-08107-00-BR	COUNTY KANE	TOTAL SHEETS 80	SHEET NO. 47
FED. ROAD DIST. NO.		ILLINOIS FED. AID PROJECT		
CONTRACT NO. 63644				