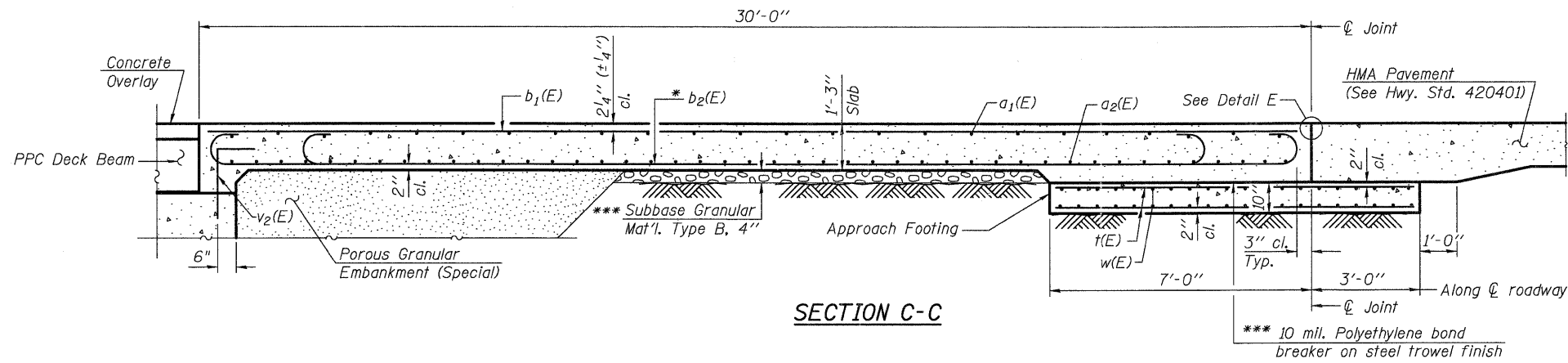


Notes

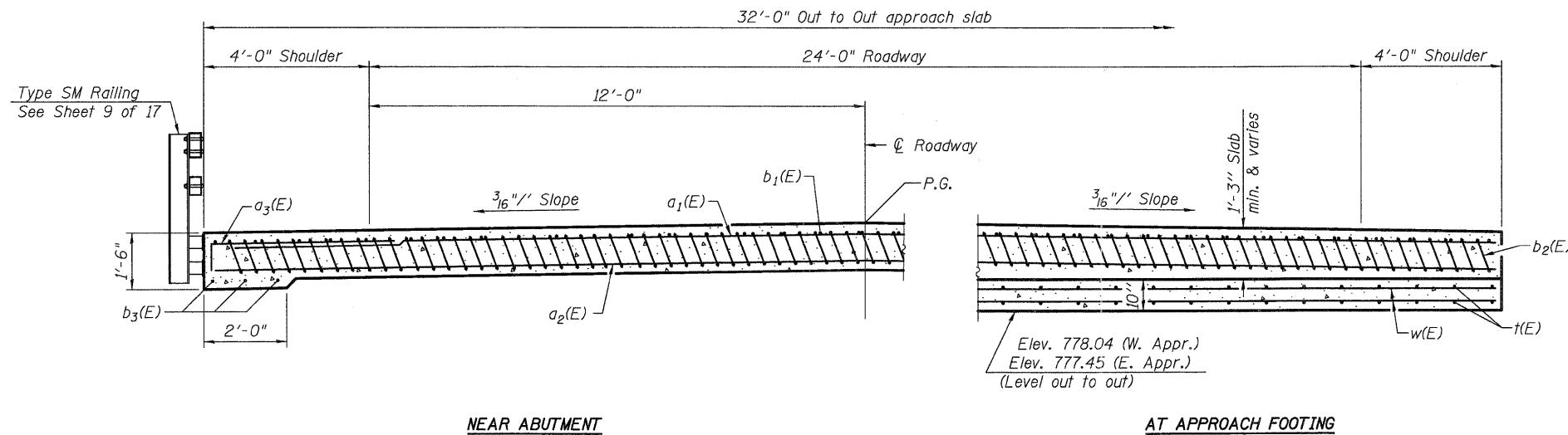
See Sheet 7 of 17 for Detail E.  
 Approach slab and parapet concrete shall be paid for as Concrete Superstructure.  
 Approach footing concrete shall be paid for as Concrete Structures.  
 Reinforcement shall be paid for as Reinforcement Bars, Epoxy Coated.  
 The approach footing maximum applied service bearing pressure ( $Q_{max}$ ) = 2.0 ksf.  
 For  $v_2(E)$  bar details, see Sheet 13 of 17.  
 Cost of excavation for approach footing included with Concrete Structures.  
 For Porous Granular Embankment (Special) and drainage details, see Sheet 2 of 17.

\* Tilt #9  $b_2(E)$  bars as required to maintain clearance.  
 \*\*\* Cost included with Concrete Superstructure.

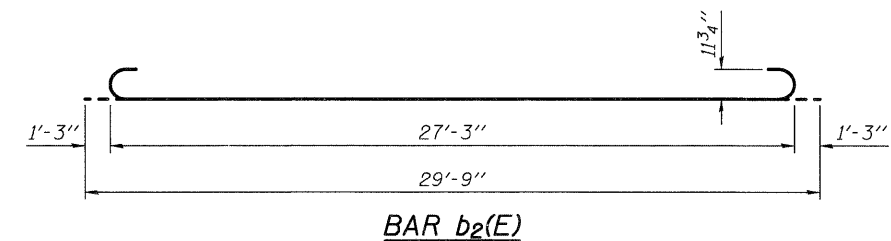
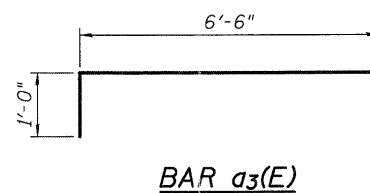


**TWO APPROACHES  
 BILL OF MATERIAL**

Bar	No.	Size	Length	Shape
$a_1(E)$	50	#4	31'-8"	—
$a_2(E)$	92	#5	31'-8"	—
$a_3(E)$	48	#5	7'-6"	—
$b_1(E)$	52	#4	29'-8"	—
$b_2(E)$	152	#9	29'-9"	U
$b_3(E)$	12	#5	14'-8"	—
$t(E)$	132	#4	9'-8"	—
$w(E)$	80	#5	31'-8"	—
Concrete Superstructure			Cu. Yd.	98.0
Concrete Structures			Cu. Yd.	19.8
Reinforcement Bars, Epoxy Coated			Pound	24,560



**SECTION D-D**  
 (See Plan for dimensions not shown)



(Sheet 2 of 2)

FILE NAME = P:\CBBEL\WEST\Projects\2085\05-0873\Hopsa\PH\Structural\Drawings\045100-05044-000-0-bridge\ppr-slab\01a\_02.dgn



USER NAME = nparris	DESIGNED - DLS	REVISED -
PLOT SCALE =	CHECKED - AEU	REVISED -
PLOT DATE = 12/16/2011	DRAWN - DLS	REVISED -
	CHECKED - AEU	REVISED -

**STATE OF ILLINOIS  
 DEPARTMENT OF TRANSPORTATION**

**BRIDGE APPROACH SLAB DETAILS  
 STRUCTURE NO. 045-3180**

SHEET NO. 8 OF 17 SHEETS

T.R. RTE.	SECTION	COUNTY	TOTAL SHEETS	SHEET NO.
2442	04-08107-00-BR	KANE	80	42
CONTRACT NO. 63644				
FED. ROAD DIST. NO.		ILLINOIS FED. AID PROJECT		