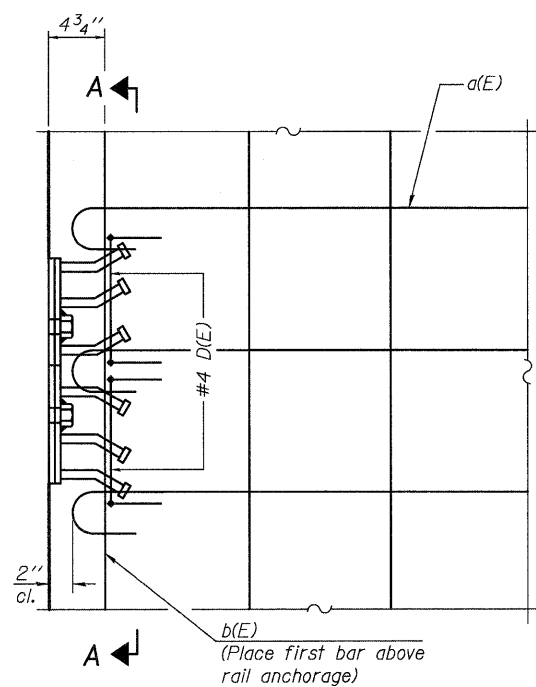


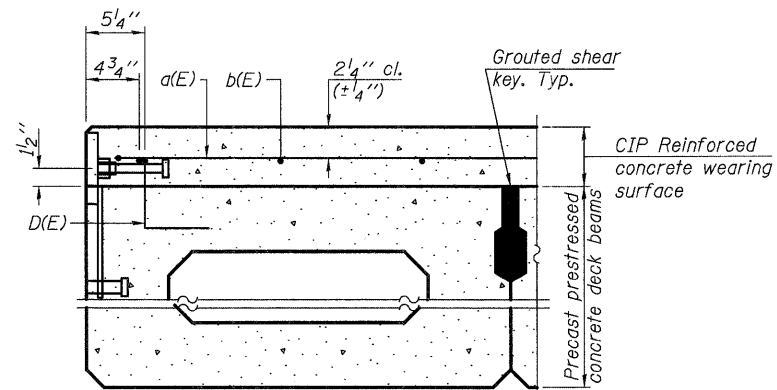
ELEVATION

Showing Rail Post Spaces
See Sheet 9 for Railing Details.

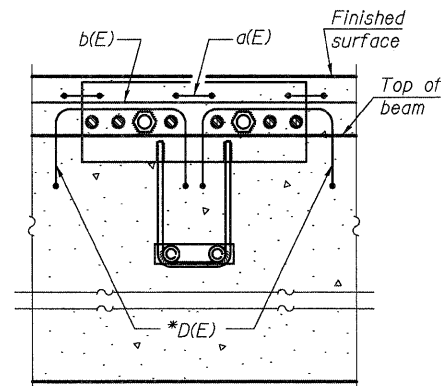


PLAN

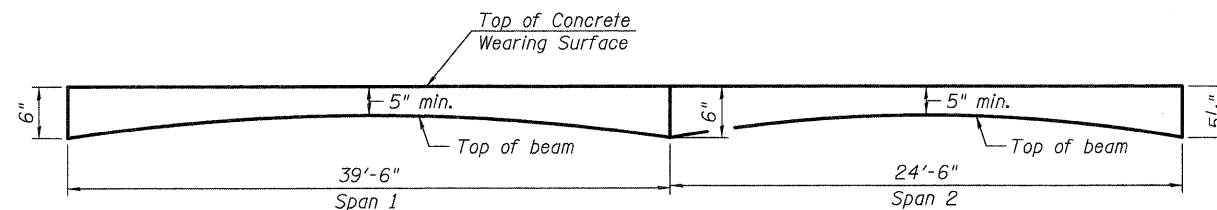
Notes:
Formwork necessary for the wearing surface may be secured utilizing the bottom rail anchorage inserts and/or additional inserts cast into the beam.



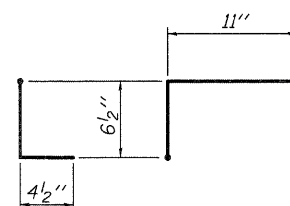
SECTION THRU FASCIA BEAM



SECTION A-A

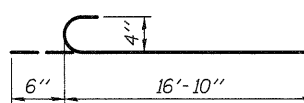


ANTICIPATED CONCRETE WEARING SURFACE PROFILE
(For information only)



BAR D(E)

* Place 2-#4 D(E) bars in beam at each post location as shown. D(E) bar included in cost of beam.



BAR a(E)

SUPERSTRUCTURE BILL OF MATERIAL

Bar	No.	Size	Length	Shape
a(E)	130	#4	17'-4"	
b(E)	99	#4	22'-8"	
Reinforcement Bars, Epoxy Coated		Pound	3,000	
Concrete Wearing Surface, 5"		Sq. Yd.	228	

FILE NAME = P:\CUBBEL WEST Projects\2009\08-20073 Hoppafill\Structure\1\Drawings\0453180-6364-4066-Super-Detail.dgn



USER NAME = nporris	DESIGNED - DLS	REVISED -
PLOT SCALE =	CHECKED - AEU	REVISED -
PLOT DATE = 12/16/2011	DRAWN - DLS	REVISED -
	CHECKED - AEU	REVISED -

**STATE OF ILLINOIS
DEPARTMENT OF TRANSPORTATION**

**SUPERSTRUCTURE DETAILS
STRUCTURE NO. 045-3180**

SHEET NO. 6 OF 17 SHEETS

T.R. RTE. 2442	SECTION 04-08107-00-BR	COUNTY KANE	TOTAL SHEETS 80	SHEET NO. 40
FED. ROAD DIST. NO. ILLINOIS			FED. AID PROJECT	
CONTRACT NO. 63644				