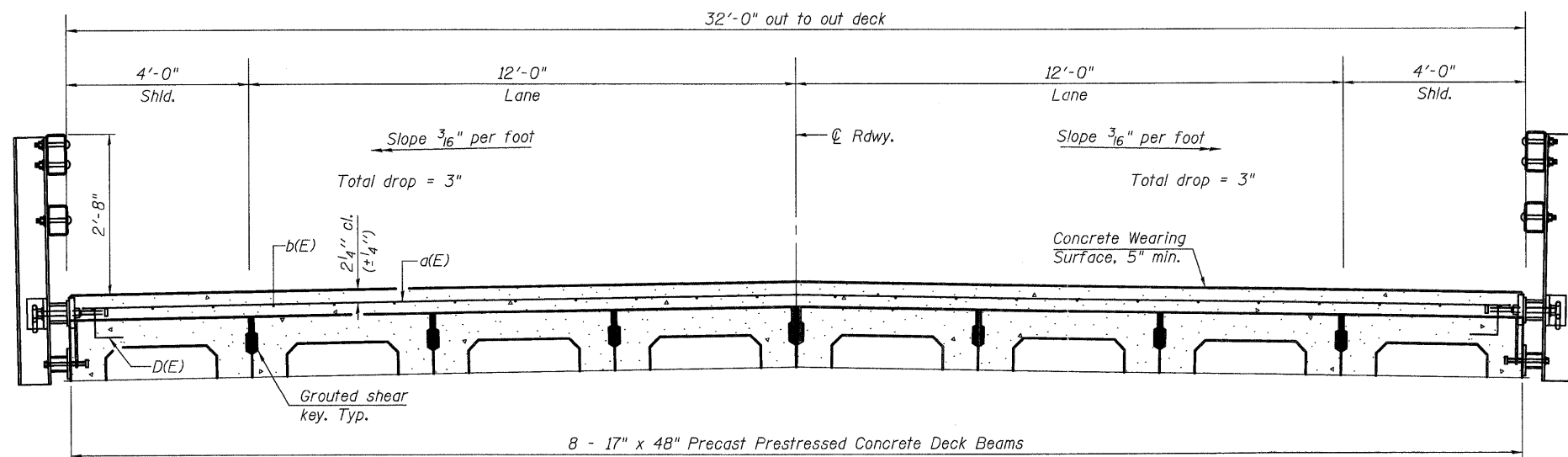


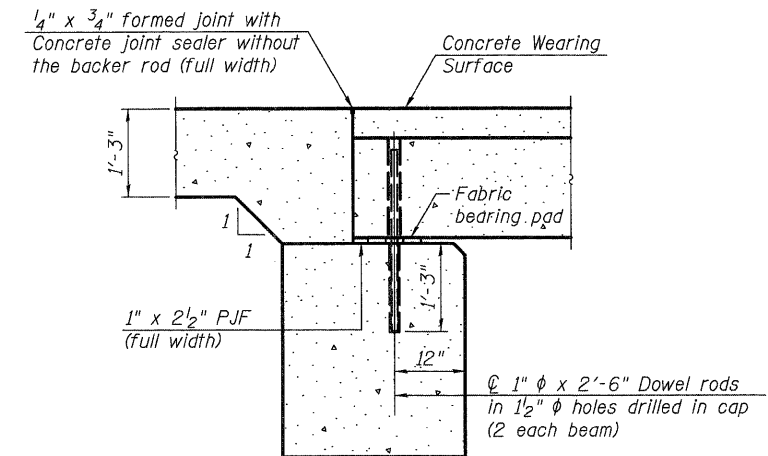
PLAN

MINIMUM BAR LAP
#4 bar = 2'-0"



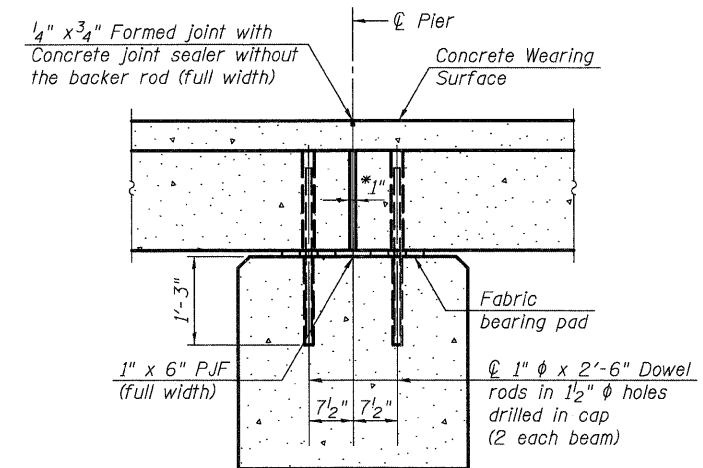
CROSS SECTION
(Looking Upstation)

Notes:
See Sheet 6 of 17 for Superstructure Details and Bill of Material.
Bars indicated thus 65 x 2-#4 etc. indicates 65 lines of bars with 2 lengths per line.



SECTION A-A

Notes:
All concrete wearing surfaces shall be placed prior to casting a backwall and/or approach slab.
See Sheet 12 of 17 for fabric bearing pad details.



SECTION B-B

*1" Jt. shall be filled with non-shrink grout. 1" dimension may vary to accommodate tolerance in beam lengths.

PDS-M-R34-0 7-1-10

FILE NAME = PACBBEL_WEST_Projects\2009\05-0073_Hoppe\PHD_Structural\Drawings\Final\Plans\0453180-63644-005-Super.dgn

WILLS BURKE KELSEY ASSOCIATES LTD.
116 West Main Street, Suite 201
St. Charles, Illinois 60174

USER NAME = nper119	DESIGNED - DLS	REVISED -
PLOT SCALE =	CHECKED - AEU	REVISED -
PLOT DATE = 12/16/2011	DRAWN - DLS	REVISED -
	CHECKED - AEU	REVISED -

STATE OF ILLINOIS
DEPARTMENT OF TRANSPORTATION

SUPERSTRUCTURE
STRUCTURE NO. 045-3180

SHEET NO. 5 OF 17 SHEETS

T.R. RTE.	SECTION	COUNTY	TOTAL SHEETS	SHEET NO.
2442	04-08107-00-BR	KANE	80	39
FED. ROAD DIST. NO. ILLINOIS FED. AID PROJECT			CONTRACT NO. 63644	