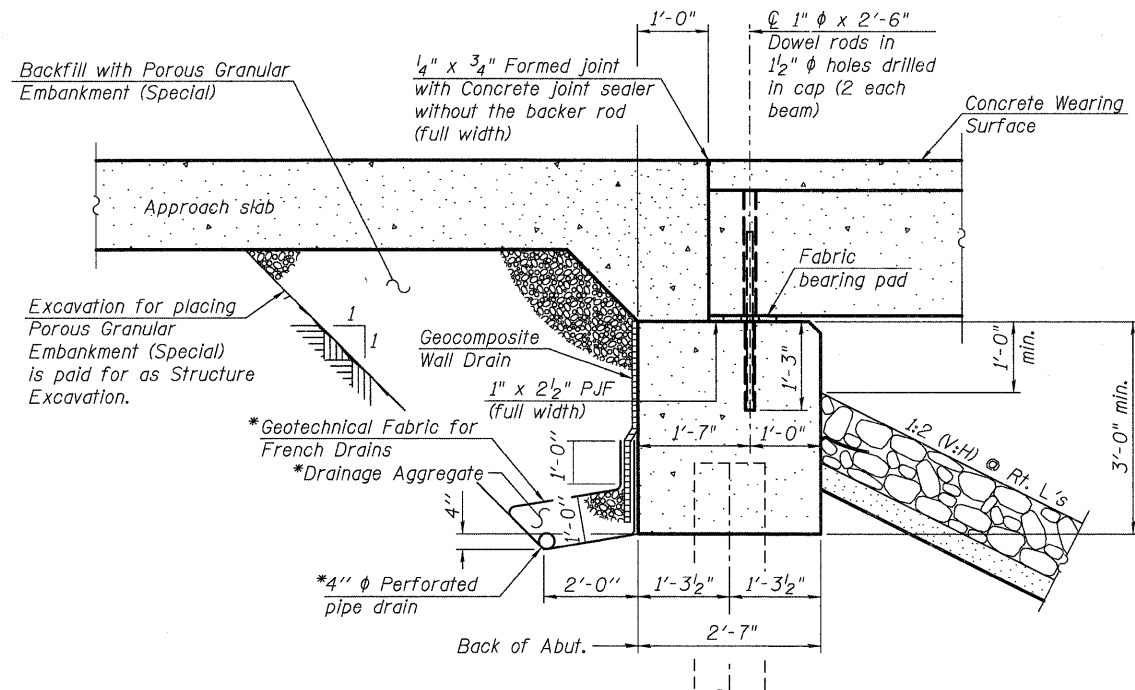


TOTAL BILL OF MATERIAL

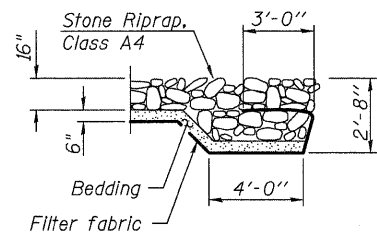
Description	Unit	Superstructure	Substructure	Total
Stone Riprap, Class A4	Sq. Yd.	----	454	454
Filter Fabric	Sq. Yd.	----	454	454
Removal of Existing Structures	Each	----	----	1
Cofferdam Excavation	Cu. Yd.	----	81	81
Cofferdam (Type 1) (Location-1)	Each	----	1	1
Structure Excavation	Cu. Yd.	----	218	218
Concrete Structures	Cu. Yd.	----	82.6	82.6
Concrete Superstructure	Cu. Yd.	98.0	----	98.0
Bridge Deck Grooving	Sq. Yd.	441	----	441
Concrete Encasement	Cu. Yd.	----	4.2	4.2
Protective Coat	Sq. Yd.	441	----	441
Precast Prestressed Concrete Deck Beams (17" Depth)	Sq. Ft.	2,045	----	2,045
Reinforcement Bars, Epoxy Coated	Pound	27,560	7,040	34,600
Steel Railing, Type SM	Foot	188	----	188
Furnishing Steel Piles HP 12x53	Foot	----	980	980
Driving Piles	Foot	----	980	980
Test Pile Steel HP 12x53	Each	----	3	3
Pile Shoes	Each	----	18	18
Name Plates	Each	----	1	1
Geocomposite Wall Drain	Sq. Yd.	----	24	24
Porous Granular Embankment, Special	Cu. Yd.	----	40	40
Concrete Wearing Surface, 5"	Sq. Yd.	228	----	228
Pipe Underdrains for Structures 4"	Foot	----	112	112



SECTION THRU ABUTMENT

*Included in the cost of Pipe Underdrains for Structures.

Note:
All drainage system components shall extend parallel to the abutment back wall until they intersect the wingwalls or 2'-0" from the end of the wingwalls when the wings are parallel to the abutment. The pipe shall extend under the wingwall, if necessary, until intersecting the side slopes. The pipes shall drain into concrete headwalls. (See Article 601.05 of the Standard Specifications and Highway Standard 601101).



SECTION A-A

GENERAL NOTES

1. Reinforcement bars shall conform to the requirements of ASTM A 706 Gr 60. See Special Provisions.
2. Reinforcement bars designated (E) shall be epoxy coated.
3. Layout of the slope protection system may be varied to suit ground conditions in the field as directed by the Engineer.
4. The embankment configuration shown shall be the minimum that must be placed and compacted prior to construction of the abutments.

FILE NAME = P:\CIBEL WEST Projects\2009\08-07\3 Hoppers\1\Structure\1\Drawings\0453180-63644-002-GenData.dgn

WILLS BURKE KELSEY ASSOCIATES LTD.
116 West Main Street, Suite 201
St. Charles, Illinois 60174

USER NAME = nparris	DESIGNED - DLS	REVISED -
PLOT SCALE =	CHECKED - AEU	REVISED -
PLOT DATE = 12/16/2011	DRAWN - DLS	REVISED -
	CHECKED - AEU	REVISED -

**STATE OF ILLINOIS
DEPARTMENT OF TRANSPORTATION**

**GENERAL NOTES & BILL OF MATERIAL
STRUCTURE NO. 045-3180**

SHEET NO. 2 OF 17 SHEETS

T.R. RTE.	SECTION	COUNTY	TOTAL SHEETS	SHEET NO.
2442	04-08107-00-BR	KANE	80	36
FED. ROAD DIST. NO.			ILLINOIS FED. AID PROJECT	
CONTRACT NO. 63644				