

NOTES:

ALL PLUGS, CAPS, OR FITTINGS REQUIRED IN THE CONSTRUCTION OF PIPE UNDERDRAINS SHALL NOT BE MEASURED SEPARATELY, BUT SHALL BE INCLUDED IN THE COST OF PIPE UNDERDRAINS.

STATION, OFFSET, AND INVERTS FOR PIPE CULVERTS ARE TO THE END OF THE METAL END SECTION. THE CULVERT PIPE LENGTH IS THE TOTAL LENGTH MINUS THE END SECTION LENGTH

METAL END SECTIONS SHALL BE PER STANDARD (542406)

OTTER CREEK FOREST PRESERVE
06-32-126-009

UNDERGROUND T.V. CABLE & TELEPHONE TO BE RELOCATED BY OTHERS

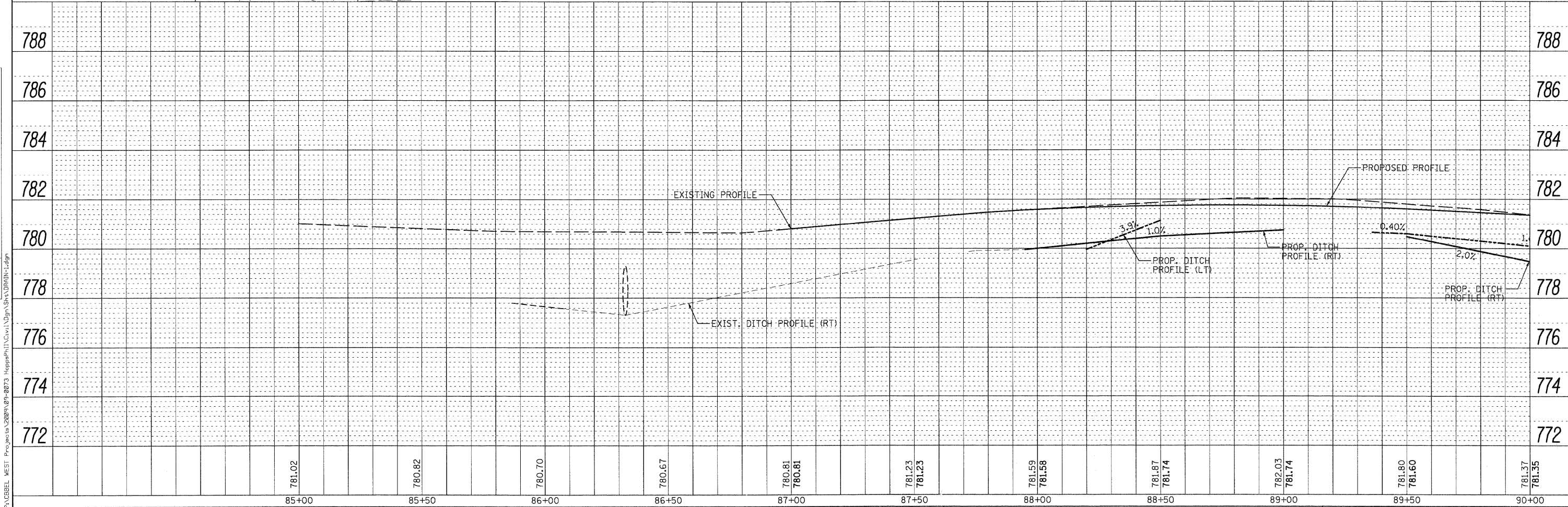
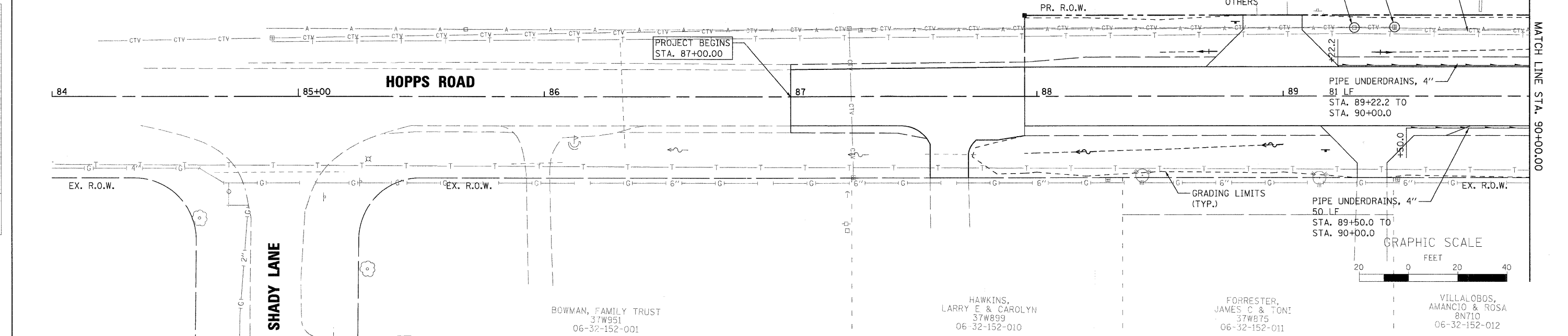
UTILITY SPLICE BOX TO BE RELOCATED BY OTHERS

POWER POLES AND AERIAL LINES TO BE RELOCATED BY OTHERS



DATE	
BY	
SURVEYED	
ALIGNMENT CHECKED	
NOTE BOOK	
PLAN	
NO.	

DATE	
BY	
SURVEYED	
GRADES CHECKED	
NOTE BOOK	
PROFILE	
NO.	



WILLS BURKE KELSEY ASSOCIATES LTD.
116 West Main Street, Suite 201
St. Charles, Illinois 60174

USER NAME = nporris	DESIGNED - KMA	REVISED -
PLOT SCALE = AS SHOWN	DRAWN - NDP	REVISED -
PLOT DATE = 12/16/2011	CHECKED - RPD	REVISED -
	DATE - 12/19/11	REVISED -

STATE OF ILLINOIS
DEPARTMENT OF TRANSPORTATION

DRAINAGE
PLAN & PROFILE
SCALE: AS SHOWN SHEET NO. 24 OF 80 SHEETS STA. TO STA.

T.R. RTE.	SECTION	COUNTY	TOTAL SHEETS
2442	04-08107-00-BR	KANE	80 24
FED. ROAD DIST. NO. ILLINOIS FED. AID PROJECT			CONTRACT NO. 63644