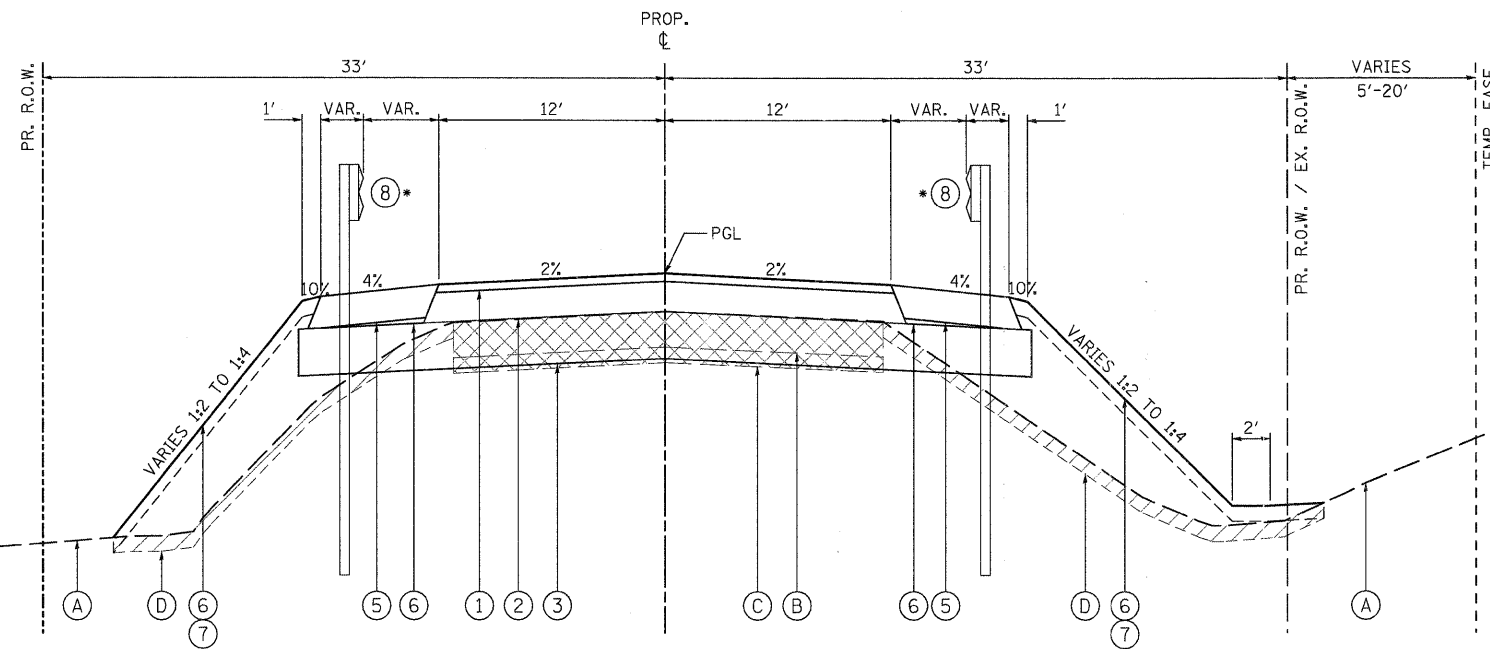


LEGEND, EXISTING

- (A) EXISTING GROUND
- (B) EXISTING HOT-MIX ASPHALT PAVEMENT, 7.6" - TO BE REMOVED (44000100)
- (C) EXISTING AGGREGATE BASE, 7.5"-11.5" - TO BE REMOVED (INCLUDED IN EARTH EXCAVATION)
- (D) EXISTING TOPSOIL - TO BE REMOVED (20201200)
- (E) EXISTING AGGREGATE SHOULDER - TO BE REMOVED (INCLUDED IN EARTH EXCAVATION)
- (F) EXISTING UNSUITABLE MATERIAL - TO BE REMOVED (20201200)

LEGEND, PROPOSED

- ① 2" HMA SURFACE COURSE, MIX "D", N50 (40603335)
- ② 7½" HMA BINDER COURSE, IL-19.0, N50 (2 LIFTS - 40603080)
- ③ AGGREGATE SUBGRADE, 12" (Z0001050)
- ④ AGGREGATE SHOULDERS, TYPE B 6" (48101500)
- ⑤ HMA SHOULDERS, 8" (48203029)
- ⑥ SUB-BASE GRANULAR MATERIAL, TYPE B (31101100)
- ⑦ 6" TOPSOIL EXCAVATION AND PLACEMENT (21101505)
- ⑧ SEEDING (TYPE AS SPECIFIED) W/EROSION CONTROL OR HD EROSION CONTROL BLANKET
- ⑨ STRUCTURAL EMBANKMENT (TO BE PAID AS FURNISHED EXCAVATION - 20400800)
- ⑩ STEEL PLATE BEAM GUARDRAIL, TYPE A, 6' POSTS (63000001)
- ⑪ PIPE UNDERDRAIN WITH FILTER FABRIC ENVELOPE, 4" (60107600)
- ⑫ POROUS GRANULAR EMBANKMENT, SUBGRADE (20700420)
- ⑬ AGGREGATE WEDGE SHOULDER, TYPE B (48102100)
- ⑭ AGGREGATE SHOULDER, SPECIAL (CA1) (X4811700)
- ⑮ GEOTECHNICAL FABRIC FOR GROUND STABILIZATION (21001000)



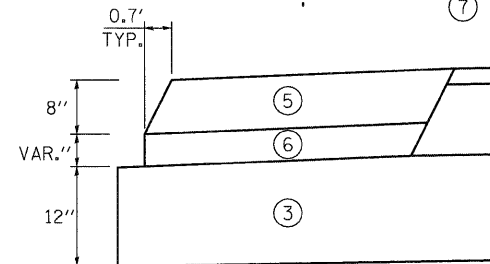
PROPOSED TYPICAL SECTIONS NO. 2

HMA SHOULDER
 STA. 93+14.6 TO STA. 94+79.6 RT, HOPPS ROAD
 STA. 93+14.6 TO STA. 96+67.1 LT, HOPPS ROAD

*GUARDRAIL
 STA. 92+84.6 TO STA. 94+09.6 RT.
 STA. 92+84.6 TO STA. 95+97.1 LT.

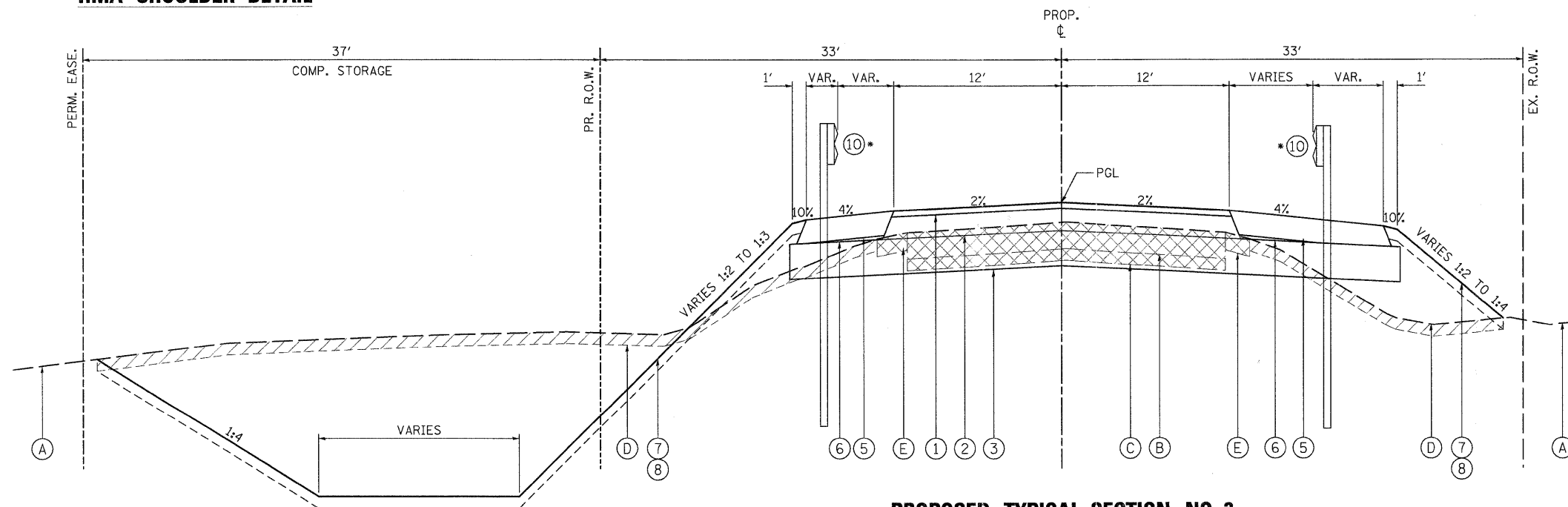
UNDERDRAIN NOTES

1. PIPE UNDERDRAINS TO BE PLACED AS INDICATED ON THE PLANS.
2. CAPS, PLUGS, WYES, AND TEES ARE CONSIDERED INCLUDED IN THE COST OF THE UNDERDRAINS.
3. ALL END RUNS SHALL HAVE A CAP OR PLUG.
4. UNDERDRAINS SHALL BE CONNECTED AS SHOWN ON THE PLANS WHICH COST IS INCLUDED IN THE COST OF THE UNDERDRAINS.
5. UNDERDRAIN MATERIAL SHALL BE PERFORATED CORRUGATED POLYETHYLENE TUBING.
6. EXCAVATION, FABRIC AND POROUS GRANULAR BACKFILL AS SPECIFIED SHALL BE INCLUDED IN THE COST OF THE UNDERDRAIN.



HMA SHOULDER DETAIL

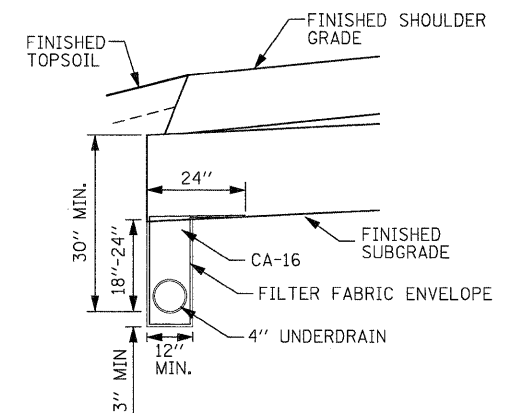
STA. 91+09.9 TO STA. 91+89.6 RT.
 STA. 90+27.6 TO STA. 91+89.6 LT.
 STA. 93+14.6 TO STA. 94+79.6 RT.
 STA. 93+14.6 TO STA. 96+67.1 LT.



PROPOSED TYPICAL SECTION NO. 3

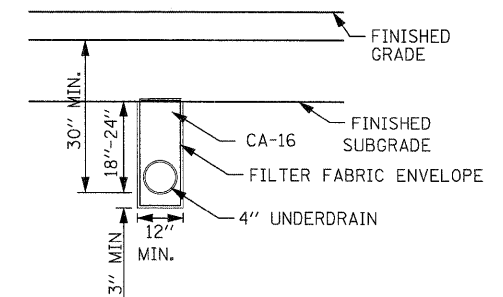
HMA SHOULDER AT COMPENSATORY STORAGE AREA
 STA. 91+09.9 TO STA. 91+89.6 RT, HOPPS ROAD
 STA. 90+27.6 TO STA. 91+89.6 LT, HOPPS ROAD

*GUARDRAIL
 STA. 91+32.6 TO STA. 92+19.6 RT.
 STA. 90+70.1 TO STA. 92+19.6 LT.



UNDERDRAIN DETAIL - LONGITUDINAL

STA. 89+22.2 TO STA. 90+86.2 LT.
 STA. 89+73.7 TO STA. 90+76.5 RT.
 STA. 95+00.0 TO STA. 97+60.2 LT./RT.



UNDERDRAIN DETAIL - TRANSVERSE
 STA. 95+00.00

FILE NAME = P:\CBBEL WEST Projects\220919\05-0073 HoppsRd\11\Drawings\Sheet\TYPICAL_2.dgn

WILLS BURKE KELSEY ASSOCIATES LTD.
 118 West Main Street, Suite 201
 St. Charles, Illinois 60174

USER NAME = nperis	DESIGNED - KMA	REVISED -
PLOT SCALE =	DRAWN - NDP	REVISED -
PLOT DATE = 12/16/2011	CHECKED - RPD	REVISED -
	DATE - 12/19/11	REVISED -

**STATE OF ILLINOIS
 DEPARTMENT OF TRANSPORTATION**

TYPICAL SECTIONS	
SCALE:	SHEET NO. 15 OF 80 SHEETS STA. TO STA.

T.R. RTE.	SECTION	COUNTY	TOTAL SHEETS	SHEET NO.
2442	04-08107-00-BR	KANE	80	15
CONTRACT NO. 63644				
FED. ROAD DIST. NO. ILLINOIS FED. AID PROJECT				