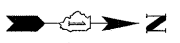
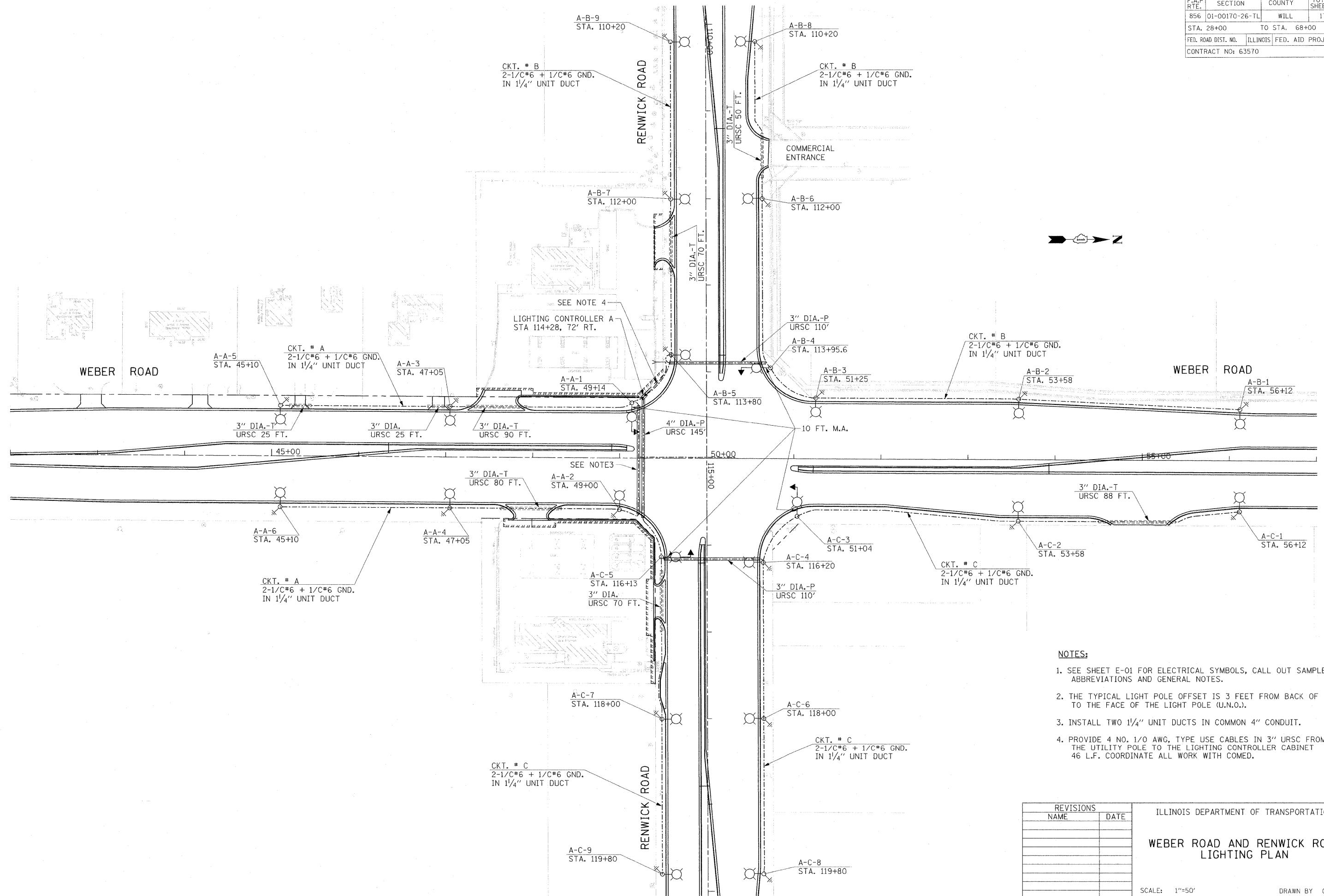


F.A.P. RTE.	SECTION	COUNTY	TOTAL SHEETS	SHEET NO.
856	01-00170-26-TL	WILL	171	114
STA. 28+00		TO STA. 68+00		
FED. ROAD DIST. NO.		ILLINOIS FED. AID PROJECT		
CONTRACT NO: 63570				



NOTES:

1. SEE SHEET E-01 FOR ELECTRICAL SYMBOLS, CALL OUT SAMPLES, ABBREVIATIONS AND GENERAL NOTES.
2. THE TYPICAL LIGHT POLE OFFSET IS 3 FEET FROM BACK OF CURB TO THE FACE OF THE LIGHT POLE (U.N.O.).
3. INSTALL TWO 1/4" UNIT DUCTS IN COMMON 4" CONDUIT.
4. PROVIDE 4 NO. 1/0 AWG, TYPE USE CABLES IN 3" URSC FROM THE UTILITY POLE TO THE LIGHTING CONTROLLER CABINET 46 L.F. COORDINATE ALL WORK WITH COMED.

E-02

REVISIONS	
NAME	DATE

ILLINOIS DEPARTMENT OF TRANSPORTATION
WEBER ROAD AND RENWICK ROAD LIGHTING PLAN

SCALE: 1"=50'
 DATE: APRIL, 2011

DRAWN BY: CJO
 CHECKED BY: MFB

10/19/2011
 P:\79786\cadd\drawings\114\LightWeb.dgn