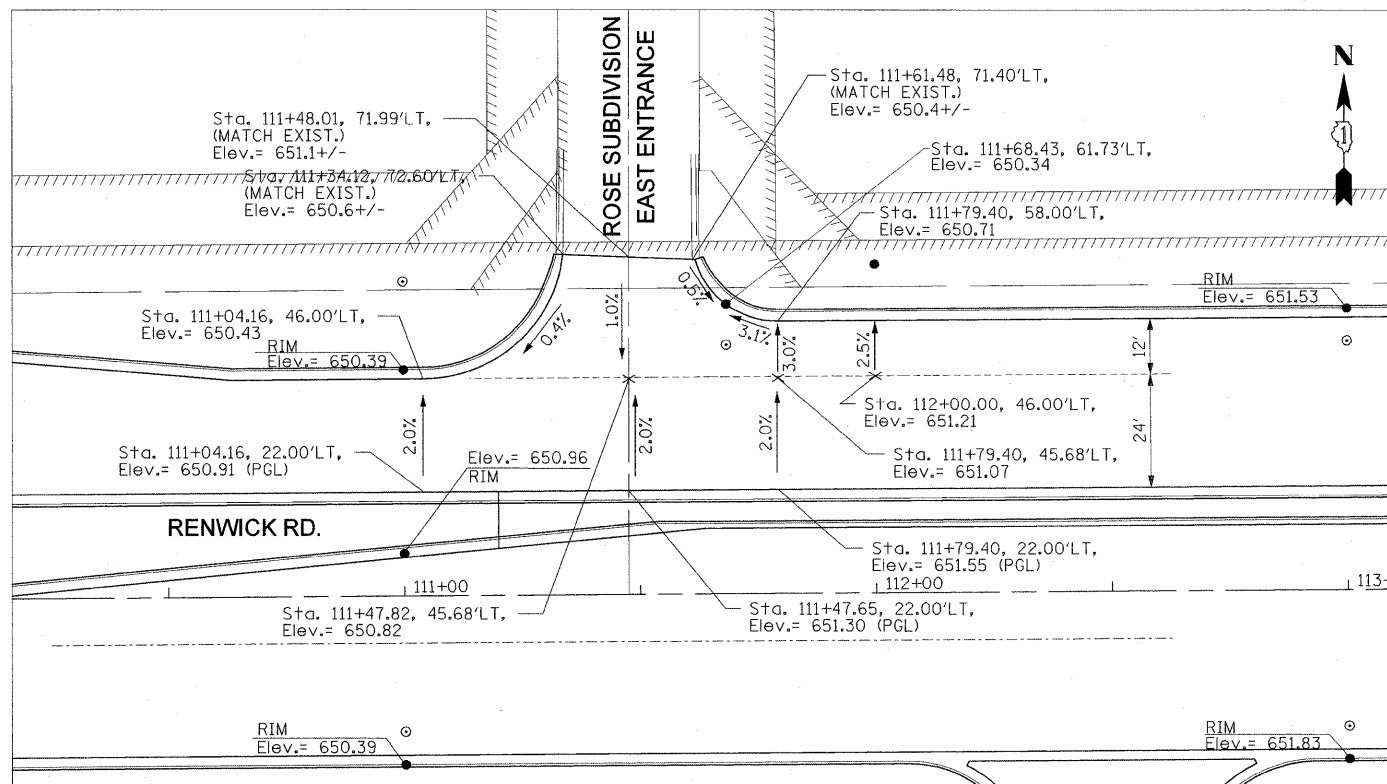
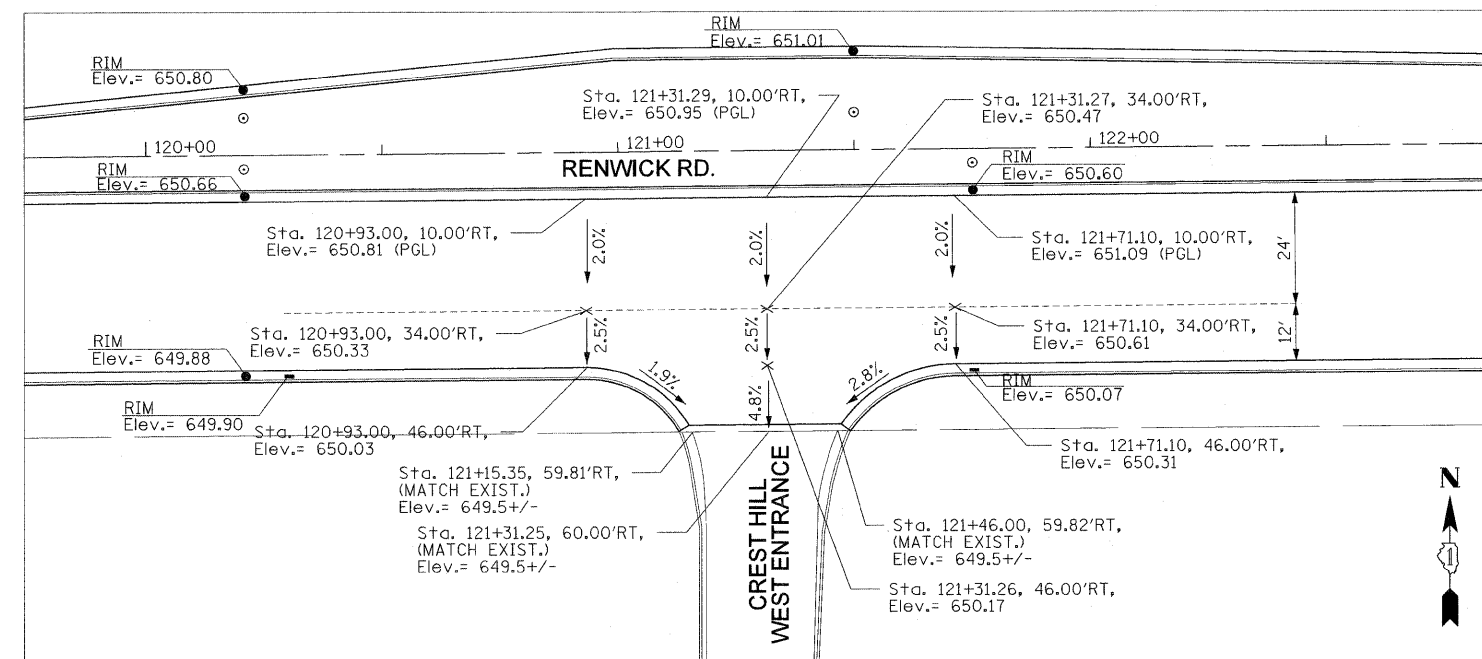


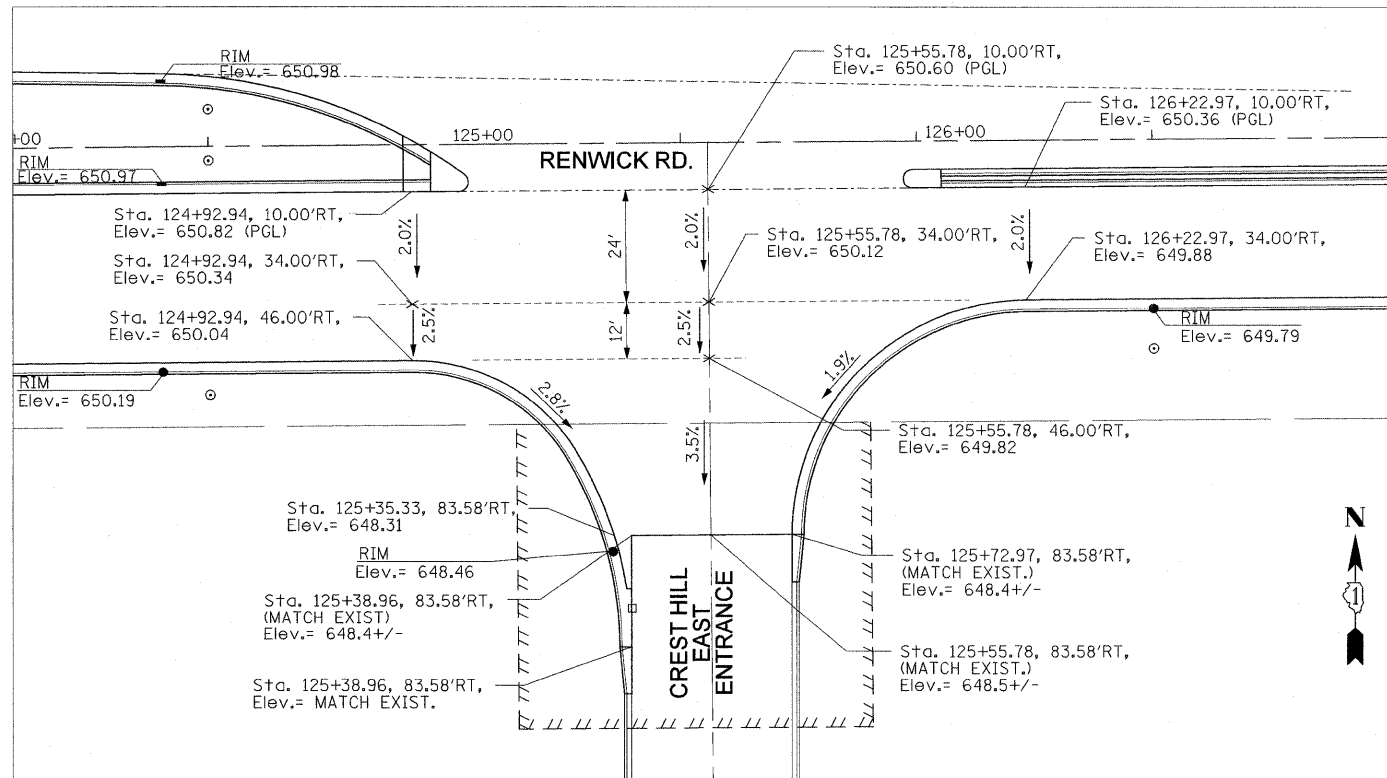
F.A.P. RTE.	SECTION	COUNTY	TOTAL SHEETS	SHEET NO.
856	01-00170-26-TL	WILL	171	85
STA.		TO STA.		
FED. ROAD DIST. NO.		ILLINOIS	FED. AID PROJECT	
CONTRACT NO: 63570				



**GRADING PLAN
ROSE SUBDIVISION EAST ENTRANCE
AND RENWICK ROAD**



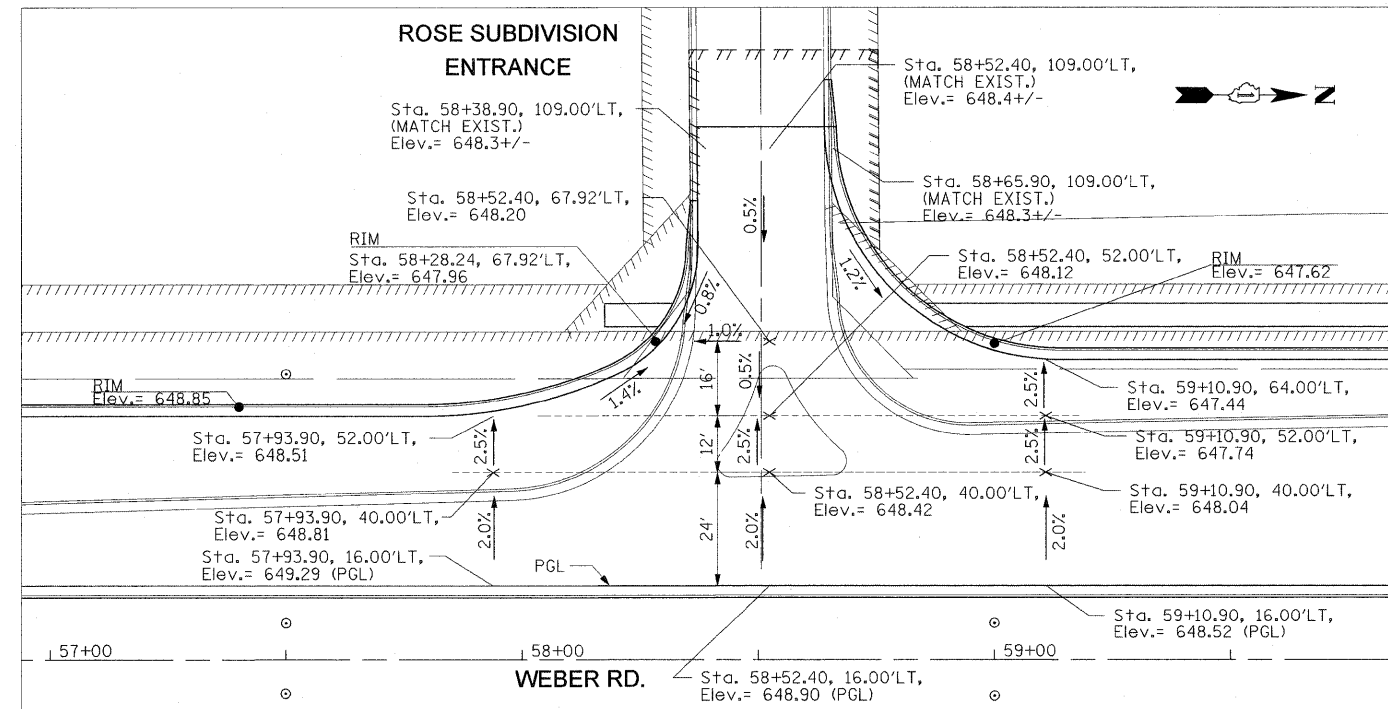
**GRADING PLAN
CREST HILL BUSINESS CENTER WEST
ENTRANCE AND RENWICK ROAD**



**GRADING PLAN
CREST HILL BUSINESS CENTER EAST
ENTRANCE AND RENWICK ROAD**

NOTES:

- RIM ELEVATIONS FOR STRUCTURES ARE SHOWN AT THE EDGE OF PAVEMENT.
- SEE TYPICAL SECTIONS AND CROSS-SECTION SHEETS FOR MEDIAN ELEVATIONS AND TYPICAL SLOPES.



**GRADING PLAN
ROSE SUBDIVISION ENTRANCE
AND WEBER ROAD**

REVISIONS	
NAME	DATE

ILLINOIS DEPARTMENT OF TRANSPORTATION
INTERSECTION GRADING PLAN
SHEET 2 OF 2

SCALE: 1" = 20'
DATE: APRIL, 2011

DRAWN BY: MXF
CHECKED BY: MFB

8/22/2011 P:\79766\ceadd\drawings\0856\grading\1an02.dgn