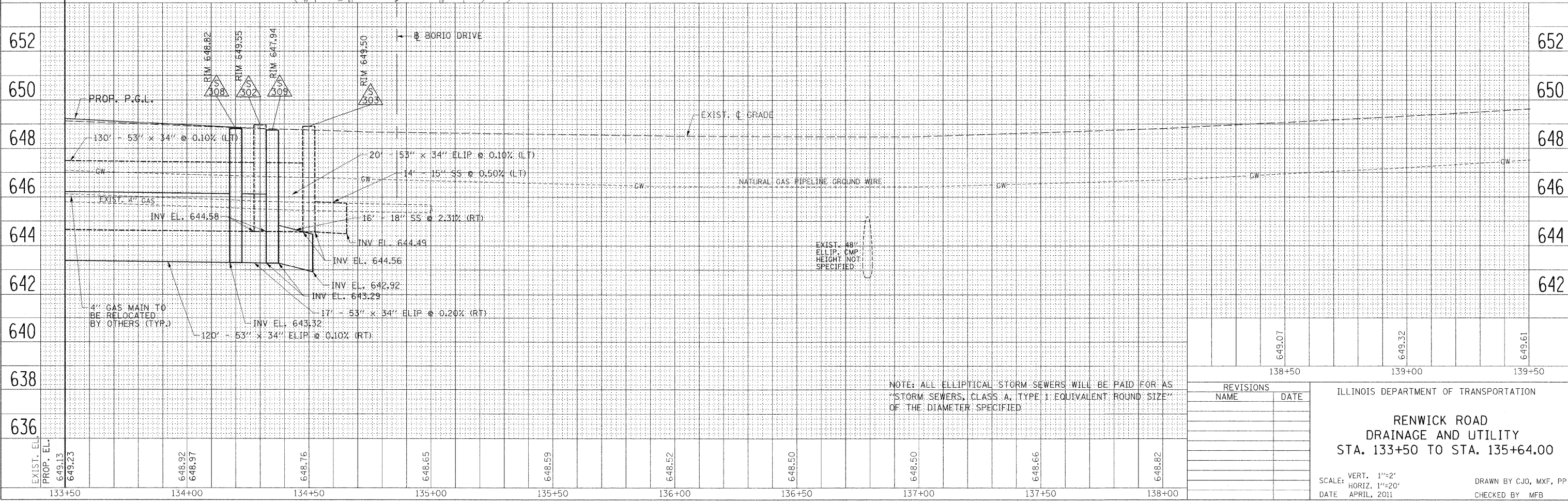
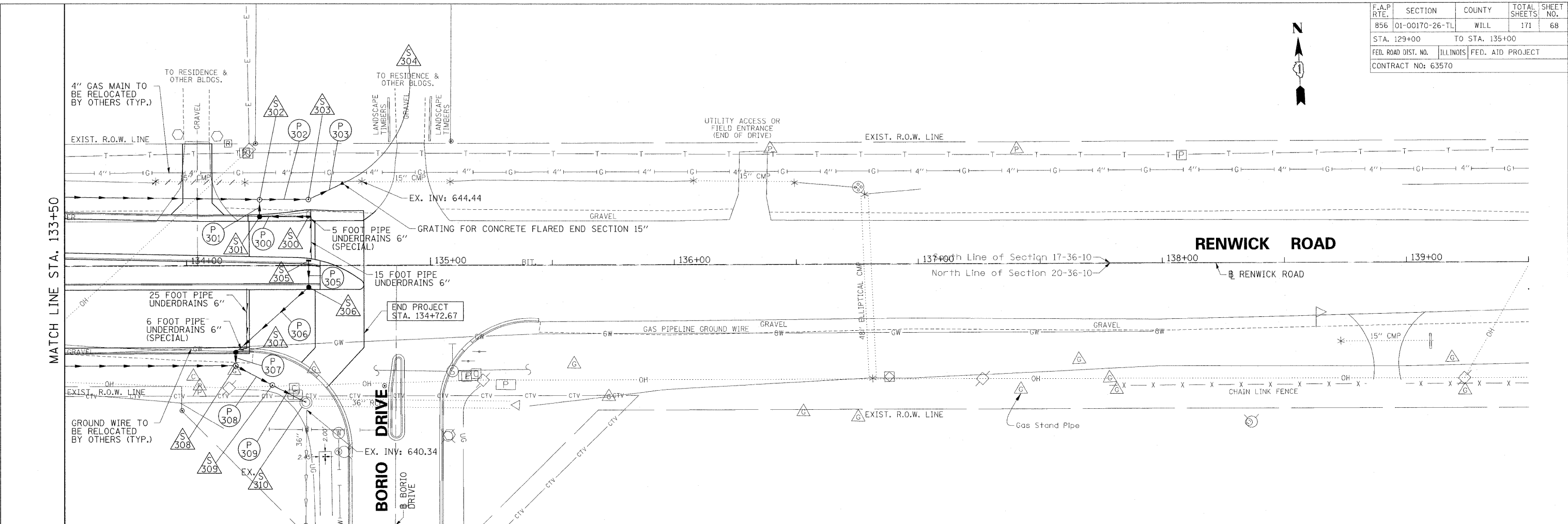
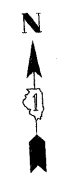


F.A.P. RTE.	SECTION	COUNTY	TOTAL SHEETS	SHEET NO.
856	01-00170-26-TL	WILL	171	68
STA. 129+00		TO STA. 135+00		
FED. ROAD DIST. NO.	ILLINOIS	FED. AID PROJECT		
CONTRACT NO: 63570				



NOTE: ALL ELLIPTICAL STORM SEWERS WILL BE PAID FOR AS STORM SEWERS, CLASS A, TYPE 1; EQUIVALENT ROUND SIZE OF THE DIAMETER SPECIFIED.

REVISIONS	
NAME	DATE

ILLINOIS DEPARTMENT OF TRANSPORTATION  
**RENWICK ROAD**  
DRAINAGE AND UTILITY  
STA. 133+50 TO STA. 135+64.00

SCALE: VERT. 1"=2'  
HORIZ. 1"=20'  
DATE: APRIL, 2011  
DRAWN BY CJO, MXF, PP  
CHECKED BY MFB

8/22/2011  
P:\179766\cadd\drawings\068d-135.dgn