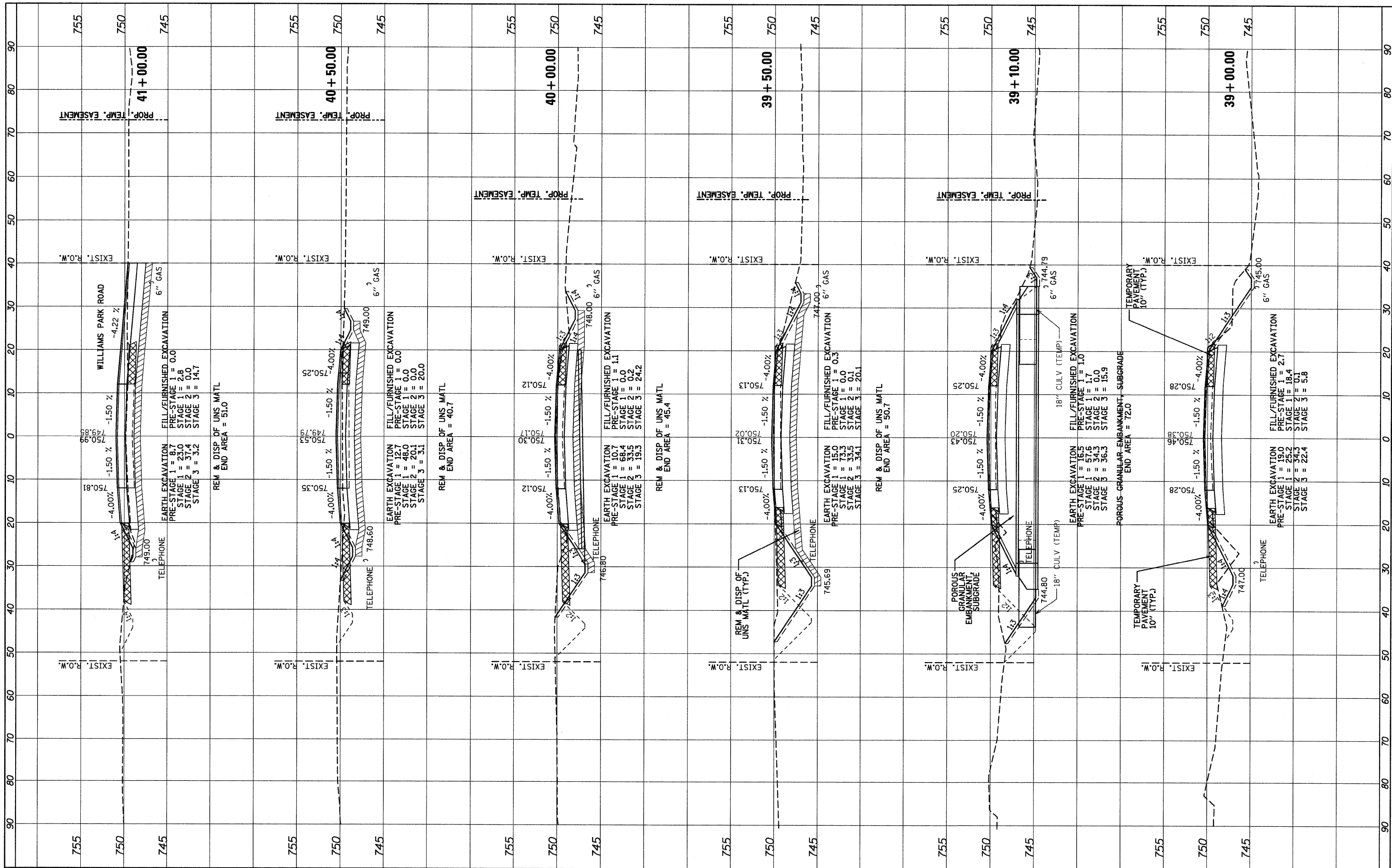


FINAL SURVEY	SURVEYED	BY	DATE
NOTE BOOK	PLOTTED		
AREAS CHECKED	TEMPLATE		
NO.	NO.		

ORIGINAL SURVEY	SURVEYED	BY	DATE
NOTE BOOK	PLOTTED		
AREAS CHECKED	TEMPLATE		
NO.	NO.		



FILE NAME = ...D162187-ahtr-xasht.dgn



DESIGNED	- ADW	REVISED	-
DRAWN	- GEW	REVISED	-
CHECKED	- RJD	REVISED	-
DATE	- 9/14/2011	REVISED	-

DESIGNED	-	REVISED	-
DRAWN	-	REVISED	-
CHECKED	-	REVISED	-
DATE	-	REVISED	-

STATE OF ILLINOIS
DEPARTMENT OF TRANSPORTATION

IL ROUTE 176 (SLOCUM LAKE ROAD) OVER BANGS LAKE DRAINAGE DITCH
CROSS SECTIONS
SCALE: 1"=10' (HORIZ.)
1"=5' (VERT.) SHEET NO. 4 OF 16 SHEETS STA. 39+00.00 TO STA. 41+00.00

F.A.P. RTE.	335	SECTION	145 X-T	COUNTY	LAKE	TOTAL SHEETS	80	SHEET NO.	68
						CONTRACT NO. 62187			
						ILLINOIS FED. AID PROJECT			