

STATE OF ILLINOIS
DEPARTMENT OF TRANSPORTATION
DIVISION OF HIGHWAYS

**PROPOSED
HIGHWAY PLANS**

FAU RTE. 3730: IL 1 (HALSTED STREET)
152nd St. TO 127th St.
SECTION (1313,1314&3262) RS-5

RESURFACING (3P)
COOK COUNTY
C-91-119-12

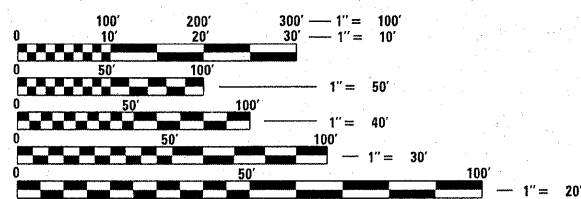
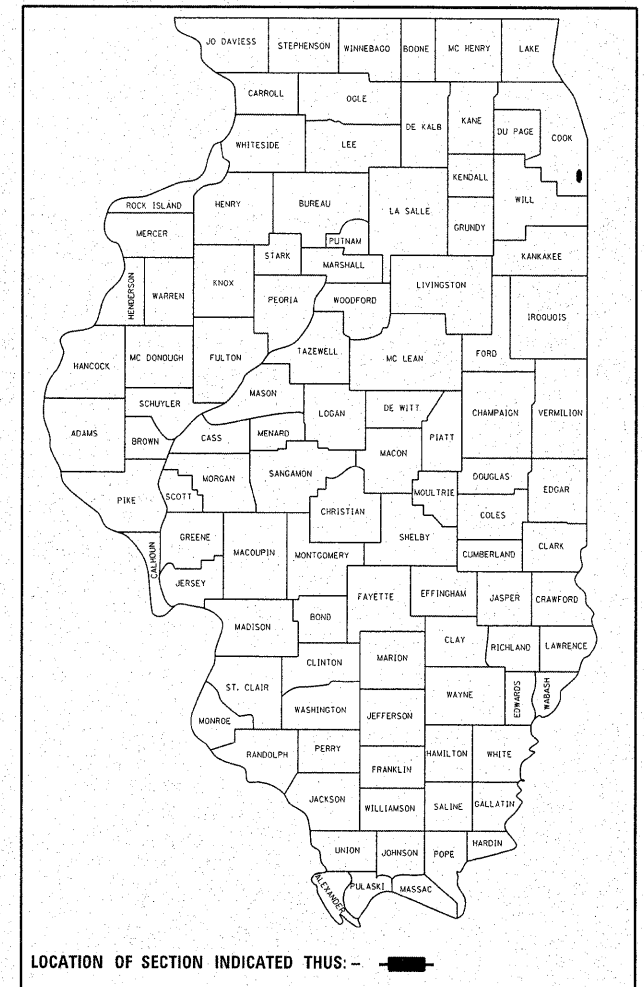
FOR INDEX OF SHEETS, SEE SHEET NO. 2

THE PROJECT IS LOCATED IN THE VILLAGE OF
RIVERDALE AND CITY OF CHICAGO AND HARVEY

F.A.U. RTE.	SECTION	COUNTY	TOTAL SHEETS	SHEET NO.
3730	(1312,1314&3262) RS-5	COOK	32	1

ILLINOIS CONTRACT NO. 60R48
* 32 + 7 - 1 = 38

D-91-119-12

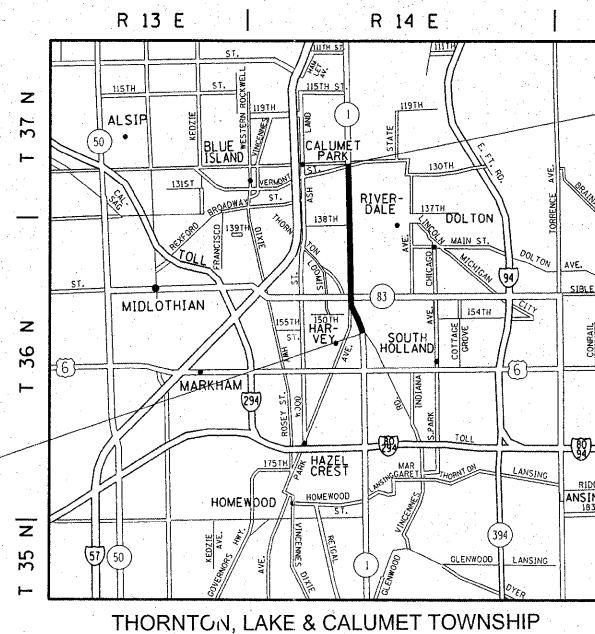


FULL SIZE PLANS HAVE BEEN PREPARED USING STANDARD ENGINEERING SCALES. REDUCED SIZED PLANS WILL NOT CONFORM TO STANDARD SCALES. IN MAKING MEASUREMENTS ON REDUCED PLANS, THE ABOVE SCALES MAY BE USED.

J.U.L.I.E.
JOINT UTILITY LOCATION INFORMATION FOR EXCAVATION
1-800-892-0123 OR 811

"C.U.A.N"
CHICAGO UTILITY ALERT NETWORK
1-312-744-7000

PROJECT ENGINEER: KARI SMITH (847) 705-4437
PROJECT MANAGER: KEN ENG (847) 705-4247
CONTRACT NO. 60R48



PROJECT BEGINS
STA. 9+66

PROJECT ENDS
STA. 186+27

OMISSION
STA. 60+80.9 TO STA. 62+89.6
STA. 100+14.1 TO STA. 107+37.1
STA. 132+38.7 TO STA. 138+01.8
STA. 163+18.9 TO STA. 167+30.8

TRAFFIC DATA
2009 ADT = 17,500
POSTED SPEED LIMIT = 30 - 40 MPH

GROSS LENGTH OF PROJECT = 17661 FT. = 3.34 MILE
NET LENGTH OF PROJECT = 15750 FT. = 2.98 MILE

STATE OF ILLINOIS
DEPARTMENT OF TRANSPORTATION
DIVISION OF HIGHWAYS

SUBMITTED DECEMBER 6, 2011

Diane M. O'Keefe DEPUTY DIRECTOR OF HIGHWAYS, REGION ENGINEER

February 3, 2012
John D. Baranowski, P.E. acting ENGINEER OF DESIGN AND ENVIRONMENT

February 3, 2012
William B. Fleenor acting DIRECTOR OF HIGHWAYS, CHIEF ENGINEER

PRINTED BY THE AUTHORITY
OF THE STATE OF ILLINOIS