

F.A.P. RTE.	SECTION	COUNTY	TOTAL SHEETS	SHEET NO.
*	2011-023-1	LAKE	15	1
		ILLINOIS	CONTRACT NO. 60P23	

*15 + 1 = 16

STATE OF ILLINOIS
DEPARTMENT OF TRANSPORTATION
DIVISION OF HIGHWAYS

**PROPOSED
HIGHWAY PLANS**

FAP 352 (ILLINOIS ROUTE 137)
SECTION 2011-023-1
18th STREET TO N OF MLK DRIVE/22nd STREET
PAVEMENT MARKING, MEDIAN BARRIER AND SIGNING
PROJECT: HSIP-0352(015)
LAKE COUNTY
C-91-491-11

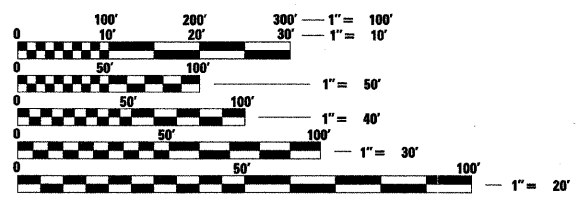
FOR INDEX OF SHEETS, SEE SHEET NO. 2

TRAFFIC DATA
EXISTING ADT = 15,400 (2009)
SPEED LIMIT = 30 MPH

THE PROJECT IS LOCATED
WITHIN THE CITY OF NORTH CHICAGO

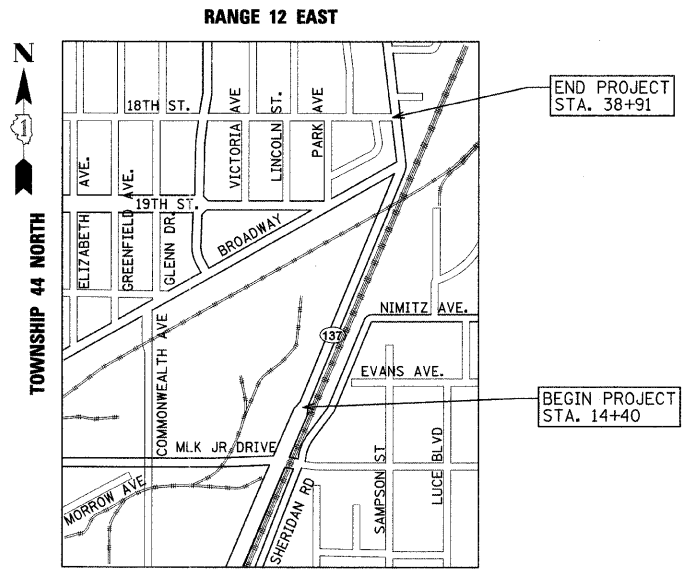


LOCATION OF SECTION INDICATED THIS: - [rectangle] -



FULL SIZE PLANS HAVE BEEN PREPARED USING STANDARD ENGINEERING SCALES. REDUCED SIZED PLANS WILL NOT CONFORM TO STANDARD SCALES. IN MAKING MEASUREMENTS ON REDUCED PLANS, THE ABOVE SCALES MAY BE USED.

J.U.L.I.E.
JOINT UTILITY LOCATION INFORMATION FOR EXCAVATION
1-800-892-0123
OR 811



SHEILDS TOWNSHIP
GROSS LENGTH & NET LENGTH = 2,451 FT. (0.46 MILES)

LICENSED PROFESSIONAL ENGINEER
PETER M. JOHNSTON
062-047647
STATE OF ILLINOIS
Peter M. Johnston
SIGNATURE
11-8-11
DATE

LICENSE EXPIRES 11-30-2013

STATE OF ILLINOIS
DEPARTMENT OF TRANSPORTATION
DIVISION OF HIGHWAYS
SUBMITTED December 9, 2011
Diana M. O'Keefe
DEPUTY DIRECTOR OF HIGHWAYS, REGION ENGINEER
February 3, 2012
John D. Bannanelli, P.E.
ENGINEER OF DESIGN AND ENVIRONMENT
February 3, 2012
William R. Flanagan
DIRECTOR OF HIGHWAYS, CHIEF ENGINEER

PROJECT ENGINEER: PETER JOHNSTON (GRAEF) 773-399-0112
PROJECT MANAGER: KEN ENG (IDOT) 847-705-4247

CONTRACT NO. 60P23

GRAEF 8501 W. Higgins Road, Suite 30
Chicago, Illinois 60631
(773) 399-0112

PRINTED BY THE AUTHORITY
OF THE STATE OF ILLINOIS