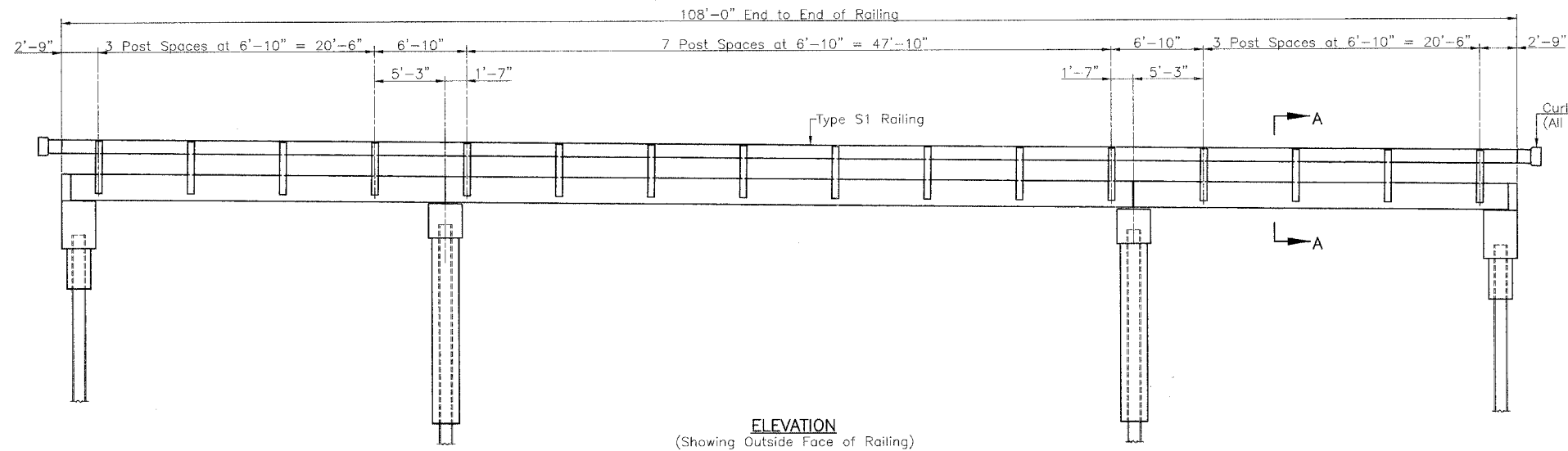
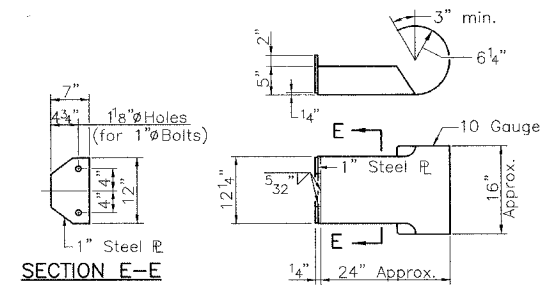


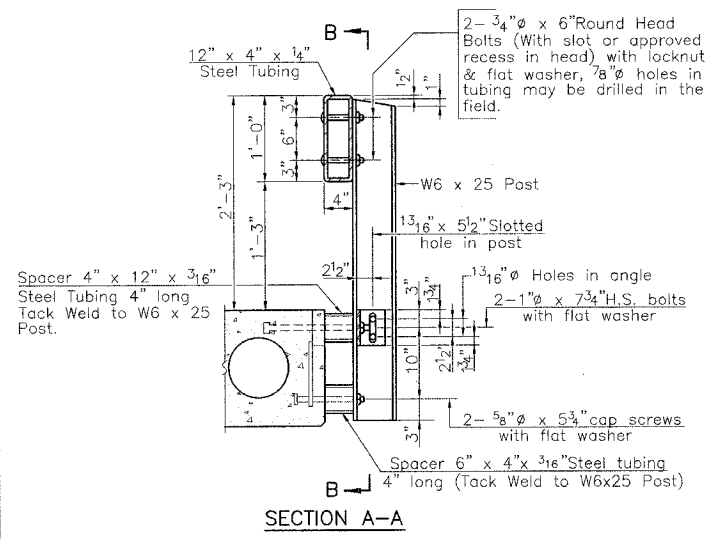
RTE.	SECTION	COUNTY	TOTAL SHEETS	SHEET NO.
T.R. 173	*	SHELBY	11	7
PROJECT BROS-173(144)				
* 01-18116-00-BR				



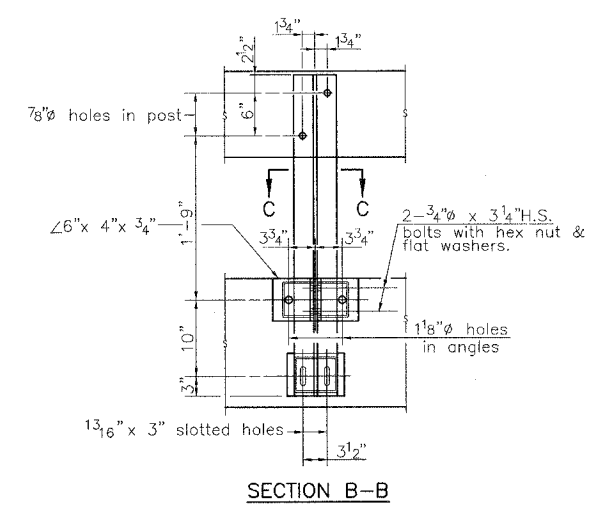
**ELEVATION**  
(Showing Outside Face of Railing)



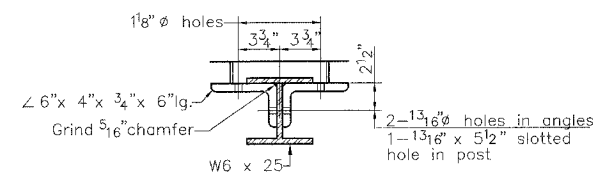
**CURLED END SECTION DETAILS (4 Required)**



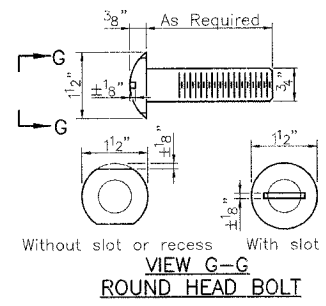
**SECTION A-A**



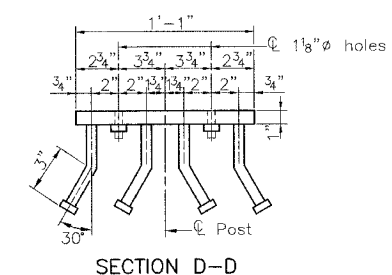
**SECTION B-B**



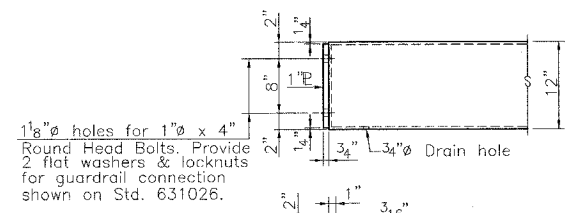
**SECTION C-C**



**VIEW G-G  
ROUND HEAD BOLT**

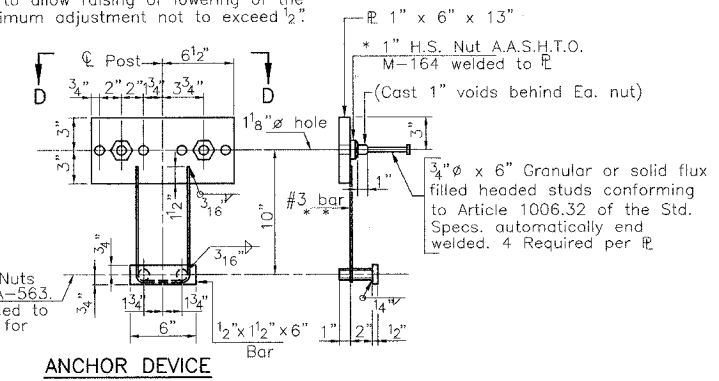


**SECTION D-D**

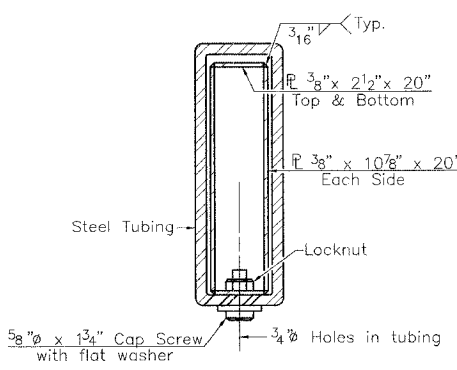


**END OF RAIL DETAILS**

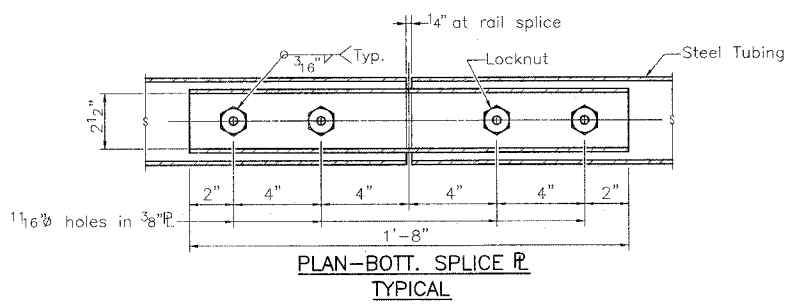
\*\* Whenever the lower insert assemblies interfere with strand locations, the #3 bars shall be cut and adjusted in order to allow raising or lowering of the lower inserts. Maximum adjustment not to exceed 1/2".



**ANCHOR DEVICE**



**SECTION AT RAIL SPLICE**



**PLAN-BOTT. SPLICE P. TYPICAL**

**BILL OF MATERIAL**

Item	Total
Steel Railing, Type S1	Foot 216

**RAILING**  
I.R. 173 OVER MUD CREEK  
SECTION 01-18116-00-BR  
SHELBY COUNTY