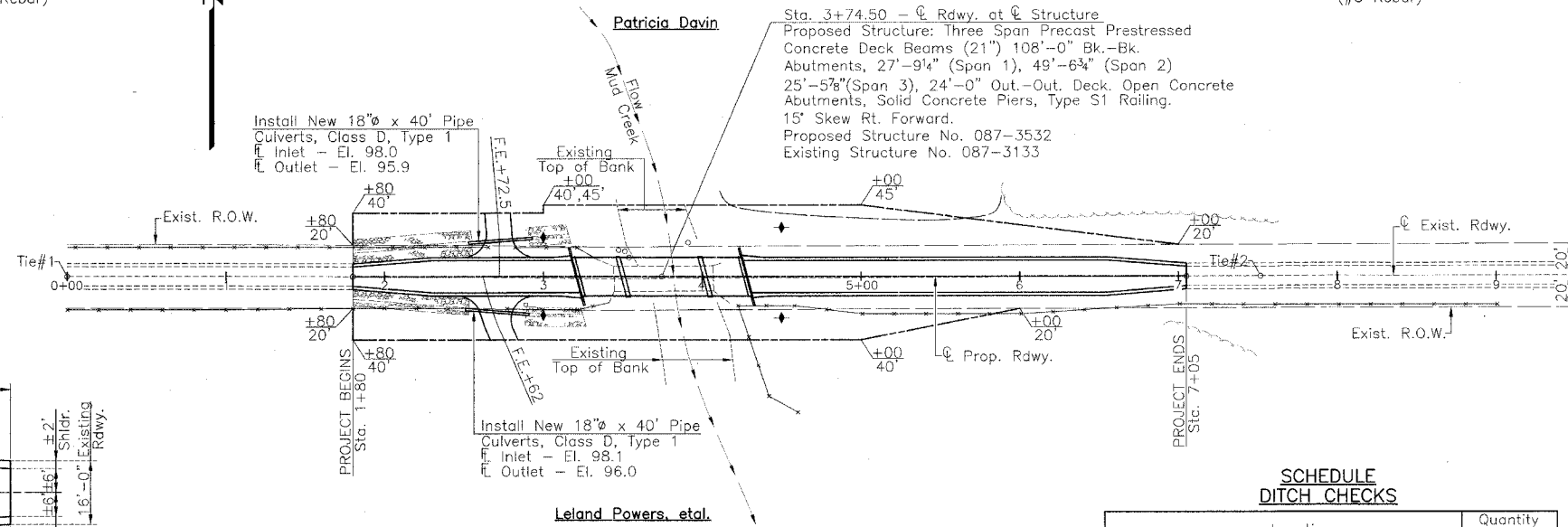
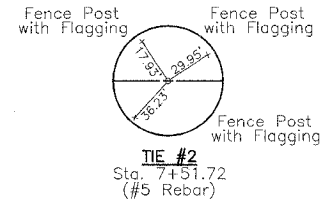
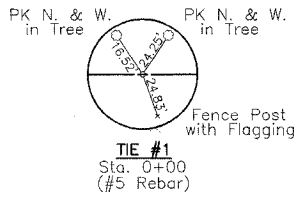


RTE.	SECTION	COUNTY	TOTAL SHEETS	SHEET NO.
T.R.173	*	SHELBY	11	3
PROJECT BROS-173(144)				
* 01-18116-00-BR				

SECTION 6 T.11 N., R.3 E., 3rd P.M.



SCHEDULE  
STONE RIPRAP DITCH

Location	Quantity (Ton)
Sta. 1+80 to Sta. 3+16 Lt.	102
Sta. 1+80 to Sta. 3+25 Rt.	87
<b>Total</b>	<b>189</b>

SCHEDULE  
TREE REMOVAL (6 TO 15 UNITS DIAMETER)

Location	Quantity (Unit)
Sta. 3+93 31' Rt. Cluster of 4 Trees	38
<b>Total</b>	<b>38</b>

SCHEDULE  
TREE REMOVAL (OVER 15 UNITS DIAMETER)

Location	Quantity (Unit)
Sta. 3+47 17' Lt.	16
Sta. 3+51 18' Lt.	16
Sta. 3+54 12' Lt.	16
<b>Total</b>	<b>48</b>

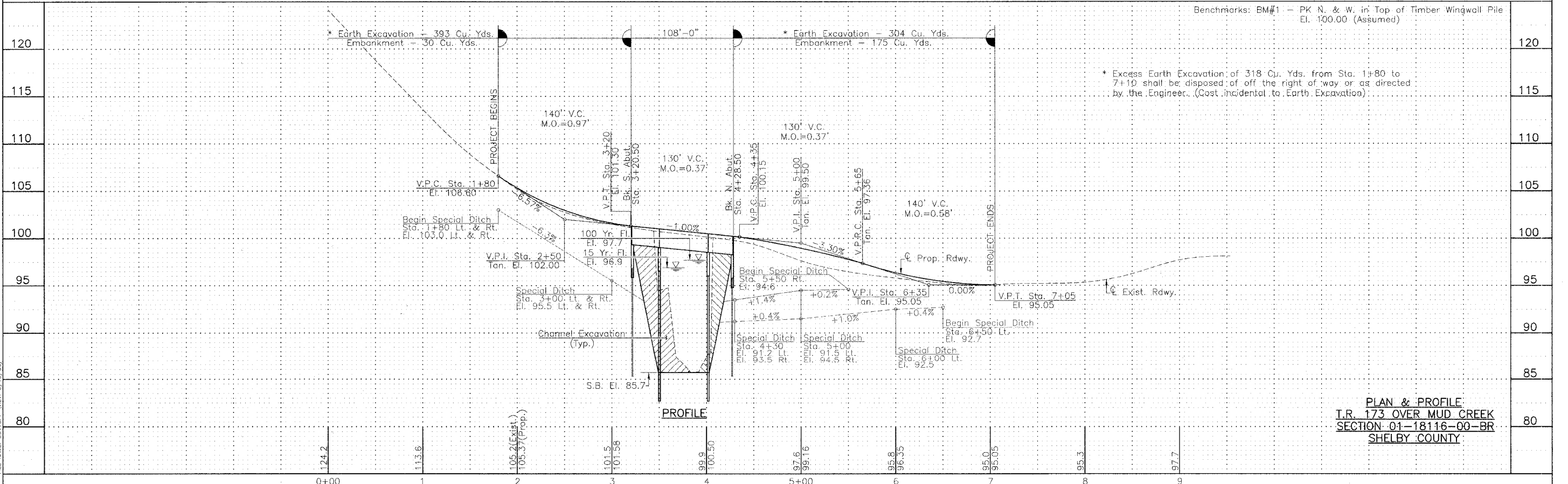
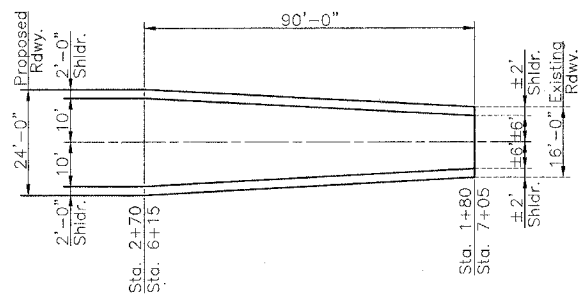
SCHEDULE  
DITCH CHECKS

Location	Quantity (Each)
Sta. 3+00 25' Lt.	1
Sta. 3+00 25' Rt.	1
Sta. 4+50 31' Lt.	1
Sta. 4+50 26' Rt.	1
<b>Total</b>	<b>4</b>

UTILITIES

Shelby Electric Cooperative  
North Route 128  
Shelbyville, Illinois 62565  
Consolidated Communications Inc.  
121 South 17th Street  
Mattoon, Illinois 61938-3915  
217-235-3311

SECTION 7 T.11 N., R.3 E., 3rd P.M.



Benchmarks: BM#1 - PK N. & W. in Top of Timber Wingwall Pile  
El. 100.00 (Assumed)

\* Excess Earth Excavation of 318 Cu. Yds. from Sta. 1+80 to 7+10 shall be disposed of off the right of way or as directed by the Engineer. (Cost incidental to Earth Excavation).

PLAN & PROFILE  
T.R. 173 OVER MUD CREEK  
SECTION 01-18116-00-BR  
SHELBY COUNTY

FILE NAME: SCL73PP (REV. 5/15/06)