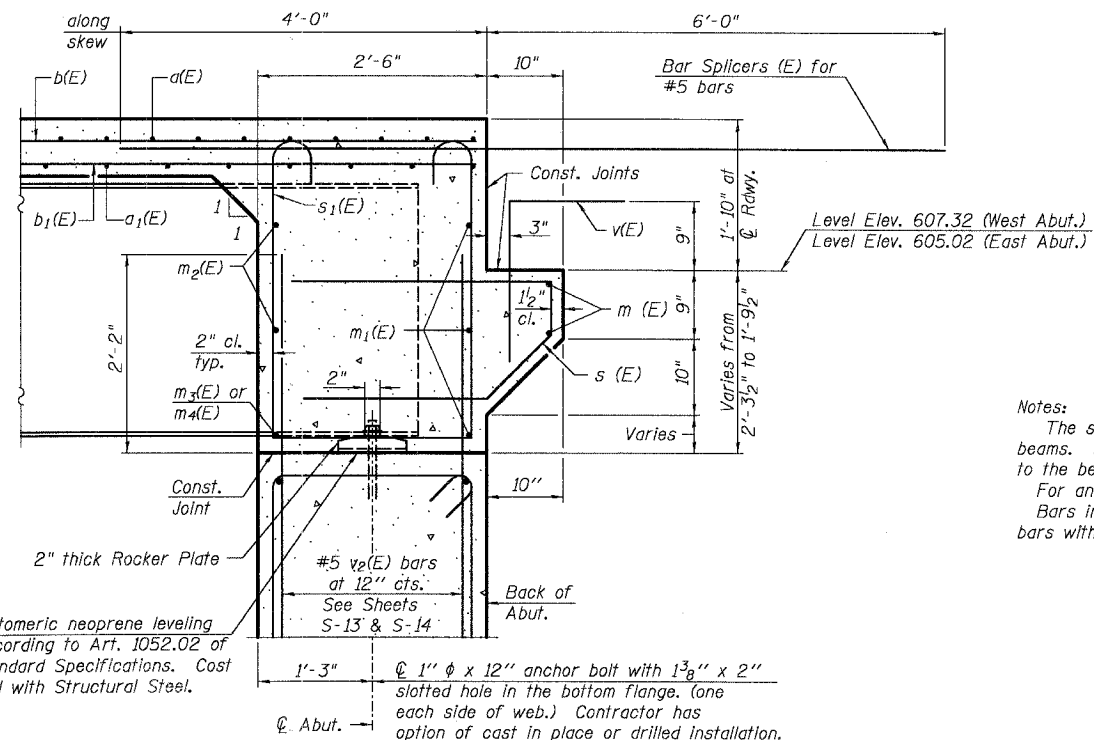
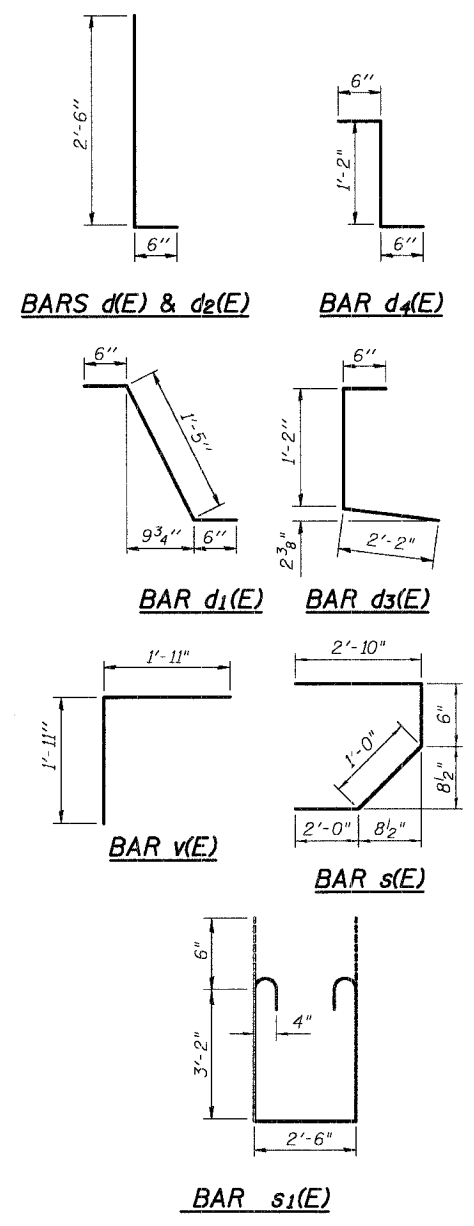


**DIAPHRAGM ELEVATION AT ABUTMENT**



**SECTION A-A**  
Dimensions at right angles to abutment, except as shown.

**MIN. BAR LAP**  
#6 bar = 2'-9"



**SUPERSTRUCTURE BILL OF MATERIAL**

Bar	No.	Size	Length	Shape
a (E)	366	# 5	46'-8"	—
a1(E)	269	# 5	45'-0"	—
a2(E)	368	# 6	4'-6"	—
a3(E)	8	# 5	28'-0"	—
b (E)	350	# 5	25'-10"	—
b1(E)	94	# 6	21'-5"	—
b2(E)	276	# 5	29'-9"	—
d (E)	368	# 5	3'-0"	—
d1(E)	356	# 5	2'-5"	—
d2(E)	368	# 4	3'-0"	—
d3(E)	368	# 4	3'-10"	—
d4(E)	12	# 5	2'-2"	—
e (E)	48	# 4	19'-7"	—
e1(E)	48	# 4	8'-8"	—
e2(E)	36	# 4	17'-0"	—
e3(E)	16	# 8	21'-6"	—
e4(E)	16	# 8	8'-8"	—
e5(E)	8	# 8	27'-7"	—
e6(E)	16	# 5	20'-8"	—
e7(E)	16	# 5	8'-8"	—
e8(E)	8	# 5	26'-8"	—
m (E)	8	# 6	27'-8"	—
m1(E)	12	# 6	28'-6"	—
m2(E)	24	# 6	12'-3"	—
m3(E)	10	# 6	9'-2"	—
m4(E)	4	# 6	3'-4"	—
s (E)	92	# 5	6'-4"	—
s1(E)	92	# 4	9'-10"	—
v (E)	92	# 5	3'-10"	—
Reinforcement Bars, Epoxy Coated		Pound	64,870	
Concrete Superstructure		Cu. Yds.	270	

Notes:  
The s(E) and s1(E) bars shall be placed parallel to the beams. Spacing for these bars shall be at right angles to the beams.  
For anchor bolt details see sheet S-12.  
Bars indicated thus 1x2-#5 etc. indicates 1 line of bars with 2 lengths per line.

DESIGNED	KMA
CHECKED	AEU
DRAWN	MDJ
CHECKED	RGD

**SEC GROUP, INC.**  
Smith Engineering Consultants • SEC Automation • SEC Planning  
4600 Prime Parkway, McHenry, IL 60050  
T. 815.385.1778 F. 815.385.1781  
www.secgroupinc.com engineering@secgroupinc.com

WILL COUNTY DEPARTMENT OF HIGHWAYS  
DIAPHRAGM DETAILS  
MANHATTAN-ARSENAL ROAD  
OVER JACKSON CREEK  
WILL COUNTY  
SECTION NO. 02-00117-21-BR  
STRUCTURE NO. 099-3395  
DATE 12-8-2006