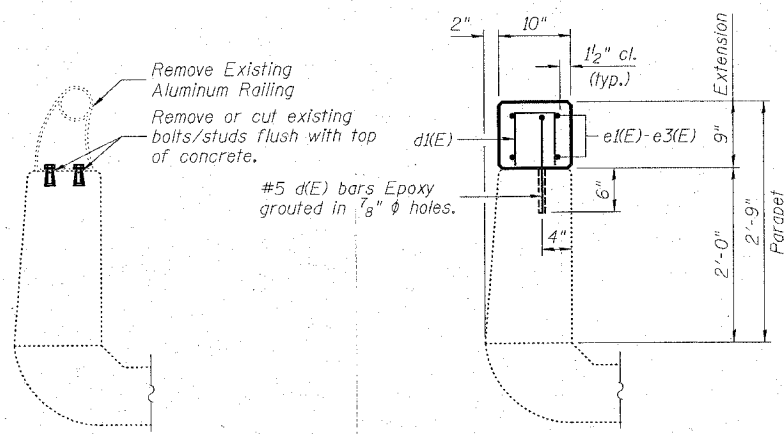


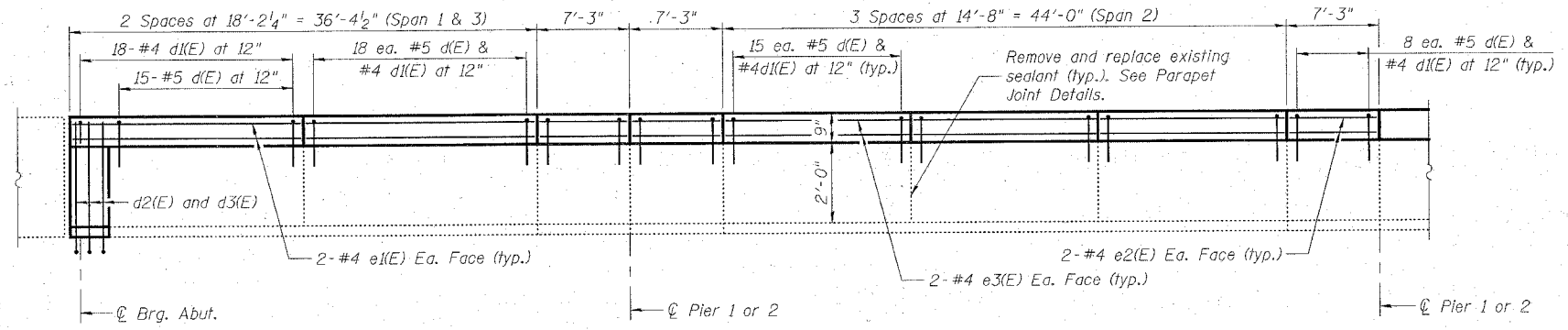
F.A.I. RTE.	SECTION	COUNTY	TOTAL SHEETS	SHEET NO.
70	60-10B	MADISON	156	101
FED. ROAD DIST. NO.	ILLINOIS	FED. AID PROJECT		
CONTRACT NO. 76857				

STATE OF ILLINOIS
DEPARTMENT OF TRANSPORTATION

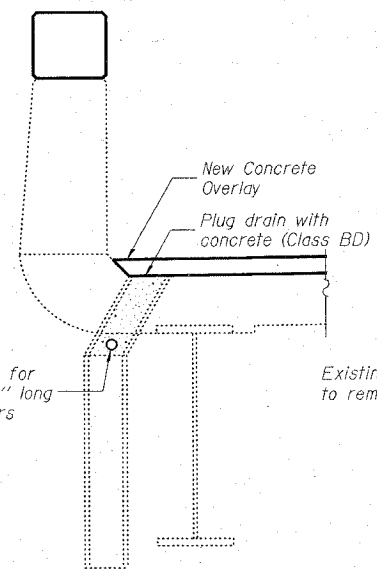


BRIDGE RAIL REMOVAL

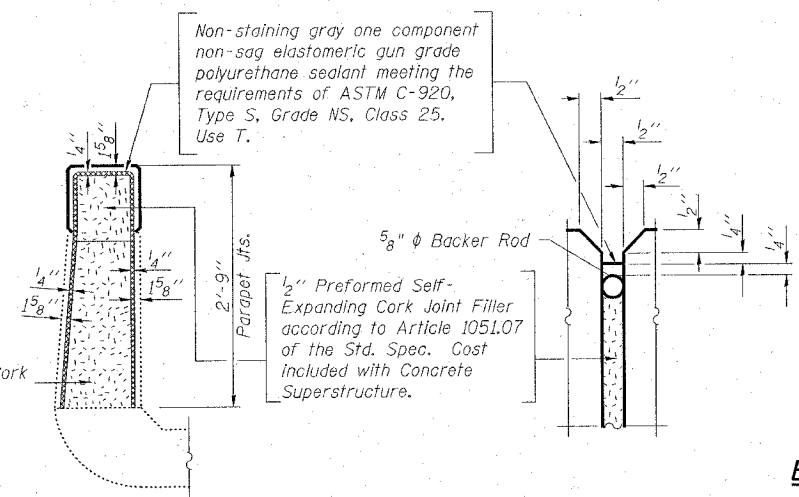
SECTION THRU PARAPET



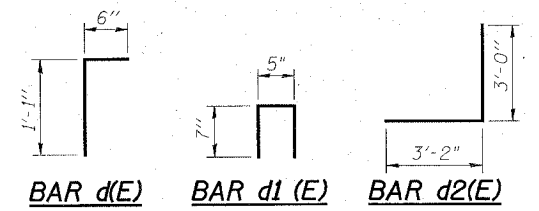
INSIDE ELEVATION OF PARAPET



SECTION AT DRAIN PLUG



PARAPET JOINT DETAILS

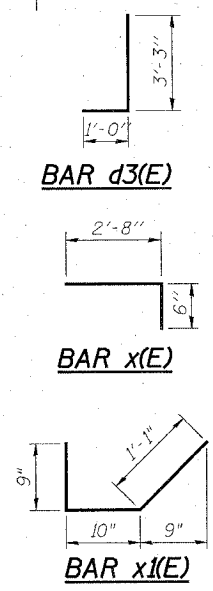


BAR d(E) BAR d1(E) BAR d2(E)

SUPERSTRUCTURE
BILL OF MATERIAL

Bar	No.	Size	Length	Shape
d(E)	24	#5	22'-6"	—
d1(E)	24	#5	18'-6"	—
a2(E)	20	#5	5'-10"	—
a3(E)	4	#5	3'-11"	—
d(E)	286	#5	1'-7"	L
d1(E)	298	#4	1'-7"	□
d2(E)	12	#5	6'-2"	L
d3(E)	12	#5	4'-3"	L
e1(E)	32	#4	17'-10"	—
e2(E)	32	#4	6'-11"	—
e3(E)	24	#4	14'-4"	—
h(E)	8	#6	21'-8"	—
h1(E)	8	#6	17'-8"	—
x(E)	72	#5	3'-2"	L
x1(E)	72	#4	2'-8"	L
Reinforcement Bars, Epoxy Coated		Pound	3680	
Concrete Superstructure		Cu. Yd.	21.6	
Bridge Rail Removal		Foot	292	
Plug Existing		Each	28	
Deck Drains				
Concrete Removal		Cu. Yd.	14.9	
Preformed Joint Strip Seal		Foot	82	

Reinforcement bars designated (E) shall be epoxy coated.



BAR d3(E)
BAR x(E)
BAR x1(E)

JD Johnson, Depp & Quisenberry
CONSULTING ENGINEERS
Springfield, Illinois

DESIGNED: CDB	DRAWN: P. Ray
CHECKED: DCD	CHECKED: CDB/DCD

SUPERSTRUCTURE DETAILS
FAI 70 (EB) OVER
WENDELL BRANCH
FAI ROUTE 70 SECTION 60-10B
MADISON COUNTY
STATION 996+73.85
STRUCTURE NO. 060-0023

FILE: \$FILES\$
USER: \$USER\$
DATE: \$DATE\$ - \$TIME\$