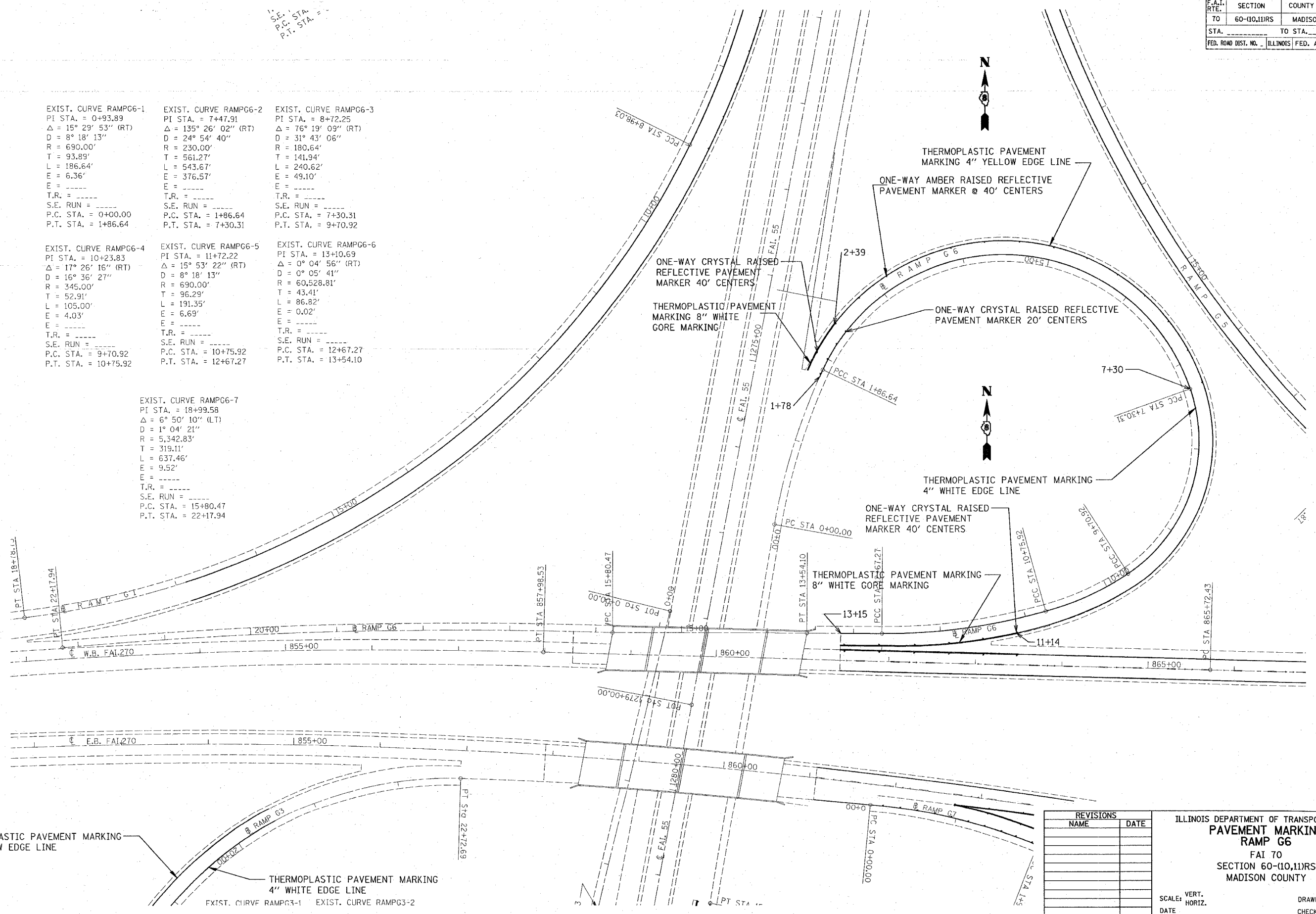


F.A.I. RTE.	SECTION	COUNTY	TOTAL SHEETS	SHEET NO.
70	60-(10,11)RS	MADISON	156	93
STA. _____		TO STA. _____		
FED. ROAD DIST. NO. _____		ILLINOIS FED. AID PROJECT _____		

EXIST. CURVE RAMPG6-1 PI STA. = 0+93.89 $\Delta = 15^\circ 29' 53''$ (RT) D = 8' 18' 13" R = 690.00' T = 93.89' L = 186.64' E = 6.36' E = ----- T.R. = ----- S.E. RUN = ----- P.C. STA. = 0+00.00 P.T. STA. = 1+86.64	EXIST. CURVE RAMPG6-2 PI STA. = 7+47.91 $\Delta = 135^\circ 26' 02''$ (RT) D = 24' 54' 40" R = 230.00' T = 561.27' L = 543.67' E = 376.57' E = ----- T.R. = ----- S.E. RUN = ----- P.C. STA. = 1+86.64 P.T. STA. = 7+30.31	EXIST. CURVE RAMPG6-3 PI STA. = 8+72.25 $\Delta = 76^\circ 19' 09''$ (RT) D = 31' 43' 06" R = 180.64' T = 141.94' L = 240.62' E = 49.10' E = ----- T.R. = ----- S.E. RUN = ----- P.C. STA. = 7+30.31 P.T. STA. = 9+70.92
EXIST. CURVE RAMPG6-4 PI STA. = 10+23.83 $\Delta = 17^\circ 26' 16''$ (RT) D = 16' 36' 27" R = 345.00' T = 52.91' L = 105.00' E = 4.03' E = ----- T.R. = ----- S.E. RUN = ----- P.C. STA. = 9+70.92 P.T. STA. = 10+75.92	EXIST. CURVE RAMPG6-5 PI STA. = 11+72.22 $\Delta = 15^\circ 53' 22''$ (RT) D = 8' 18' 13" R = 690.00' T = 96.29' L = 191.35' E = 6.69' E = ----- T.R. = ----- S.E. RUN = ----- P.C. STA. = 10+75.92 P.T. STA. = 12+67.27	EXIST. CURVE RAMPG6-6 PI STA. = 13+10.69 $\Delta = 0^\circ 04' 56''$ (RT) D = 0' 05' 41" R = 60,528.81' T = 43.41' L = 86.82' E = 0.02' E = ----- T.R. = ----- S.E. RUN = ----- P.C. STA. = 12+67.27 P.T. STA. = 13+54.10
EXIST. CURVE RAMPG6-7 PI STA. = 18+99.58 $\Delta = 6^\circ 50' 10''$ (LT) D = 1' 04' 21" R = 5,342.83' T = 319.11' L = 637.46' E = 9.52' E = ----- T.R. = ----- S.E. RUN = ----- P.C. STA. = 15+80.47 P.T. STA. = 22+17.94		



PLOT DATE = #DAYS
 FILE NAME = #FILE#
 PLOT SCALE = #SCALE#
 REFERENCE = #REF#

REVISIONS	
NAME	DATE

ILLINOIS DEPARTMENT OF TRANSPORTATION
PAVEMENT MARKING
RAMP G6
 FAI 70
 SECTION 60-(10,11)RS
 MADISON COUNTY

SCALE: VERT. _____
 HORIZ. _____
 DATE _____

DRAWN BY _____
 CHECKED BY _____