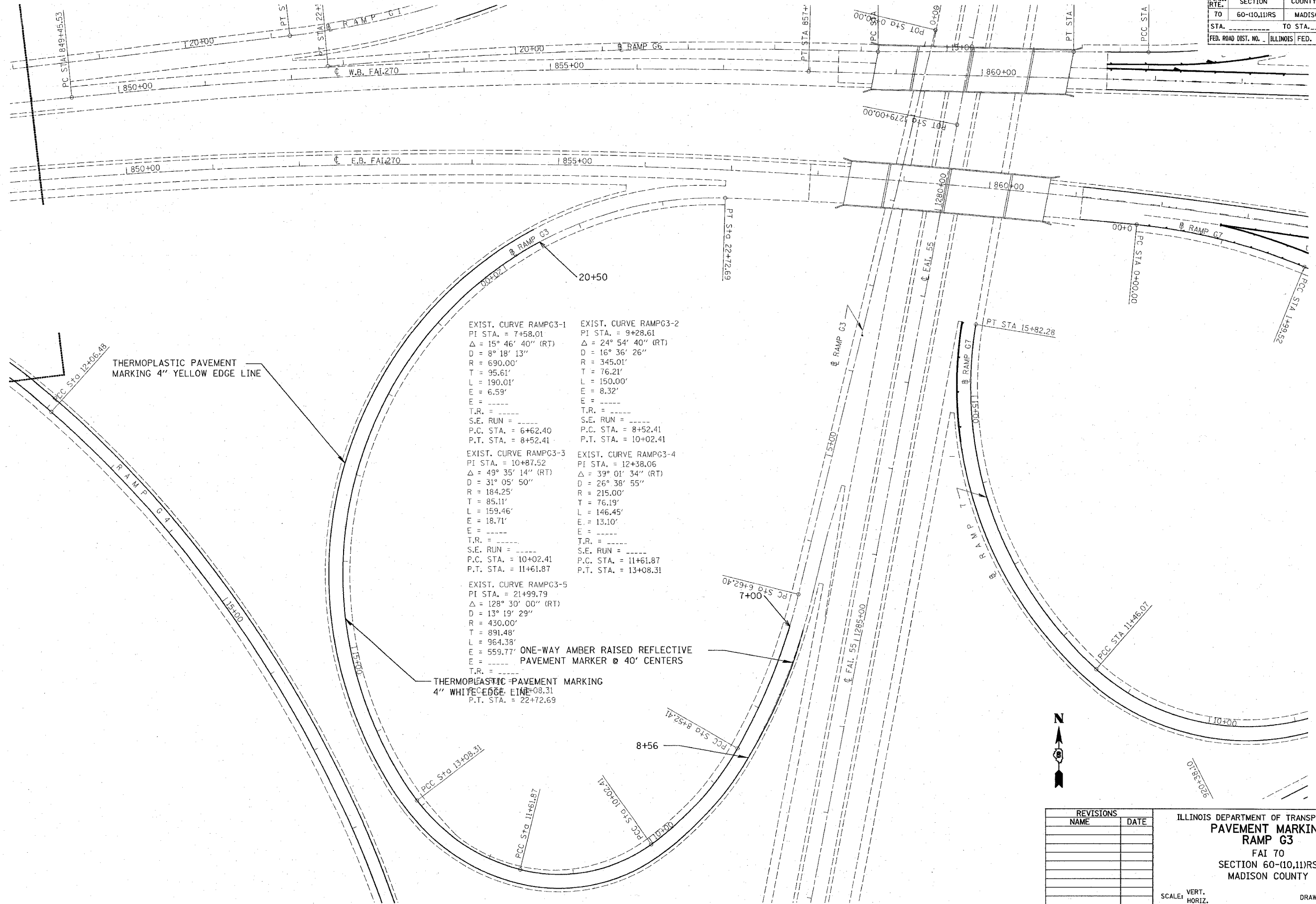


F.A.I. RTE.	SECTION	COUNTY	TOTAL SHEETS	SHEET NO.
70	60-(10,11)RS	MADISON	156	83
STA.		TO STA.		
FED. ROAD DIST. NO.		ILLINOIS FED. AID PROJECT		



THERMOPLASTIC PAVEMENT MARKING 4" YELLOW EDGE LINE

THERMOPLASTIC PAVEMENT MARKING 4" WHITE EDGE LINE

EXIST. CURVE RAMPG3-1  
 PI STA. = 7+58.01  
 $\Delta = 15^\circ 46' 40''$  (RT)  
 D = 8° 18' 13"  
 R = 690.00'  
 T = 95.61'  
 L = 190.01'  
 E = 6.59'  
 T.R. = -----  
 S.E. RUN = -----  
 P.C. STA. = 6+62.40  
 P.T. STA. = 8+52.41

EXIST. CURVE RAMPG3-2  
 PI STA. = 9+28.61  
 $\Delta = 24^\circ 54' 40''$  (RT)  
 D = 16° 36' 26"  
 R = 345.01'  
 T = 76.21'  
 L = 150.00'  
 E = 8.32'  
 T.R. = -----  
 S.E. RUN = -----  
 P.C. STA. = 8+52.41  
 P.T. STA. = 10+02.41

EXIST. CURVE RAMPG3-3  
 PI STA. = 10+87.52  
 $\Delta = 49^\circ 35' 14''$  (RT)  
 D = 31° 05' 50"  
 R = 184.25'  
 T = 85.11'  
 L = 159.46'  
 E = 18.71'  
 T.R. = -----  
 S.E. RUN = -----  
 P.C. STA. = 10+02.41  
 P.T. STA. = 11+61.87

EXIST. CURVE RAMPG3-4  
 PI STA. = 12+38.06  
 $\Delta = 39^\circ 01' 34''$  (RT)  
 D = 26° 38' 55"  
 R = 215.00'  
 T = 76.19'  
 L = 146.45'  
 E = 13.10'  
 T.R. = -----  
 S.E. RUN = -----  
 P.C. STA. = 11+61.87  
 P.T. STA. = 13+08.31

EXIST. CURVE RAMPG3-5  
 PI STA. = 21+99.79  
 $\Delta = 128^\circ 30' 00''$  (RT)  
 D = 13° 19' 29"  
 R = 430.00'  
 T = 891.48'  
 L = 964.33'  
 E = 559.77'  
 T.R. = -----

ONE-WAY AMBER RAISED REFLECTIVE PAVEMENT MARKER @ 40' CENTERS

PLOT DATE = #DATE#  
 FILE NAME = #FILE#  
 PLOT SCALE = #SCALE#  
 REFERENCE = #REF#

REVISIONS	
NAME	DATE

ILLINOIS DEPARTMENT OF TRANSPORTATION  
**PAVEMENT MARKING**  
**RAMP G3**  
 FAI 70  
 SECTION 60-(10,11)RS  
 MADISON COUNTY

SCALE: VERT. \_\_\_\_\_  
 HORIZ. \_\_\_\_\_  
 DATE \_\_\_\_\_

DRAWN BY \_\_\_\_\_  
 CHECKED BY \_\_\_\_\_