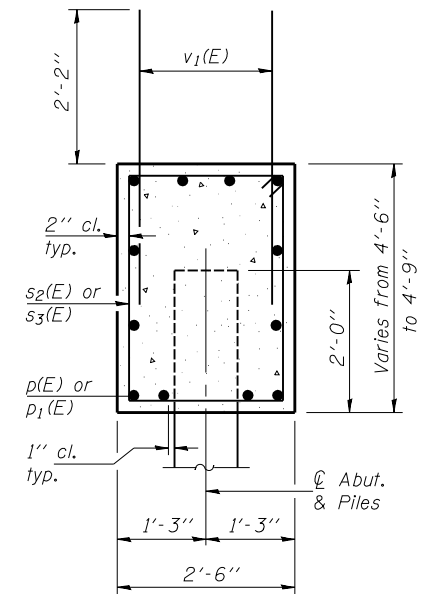
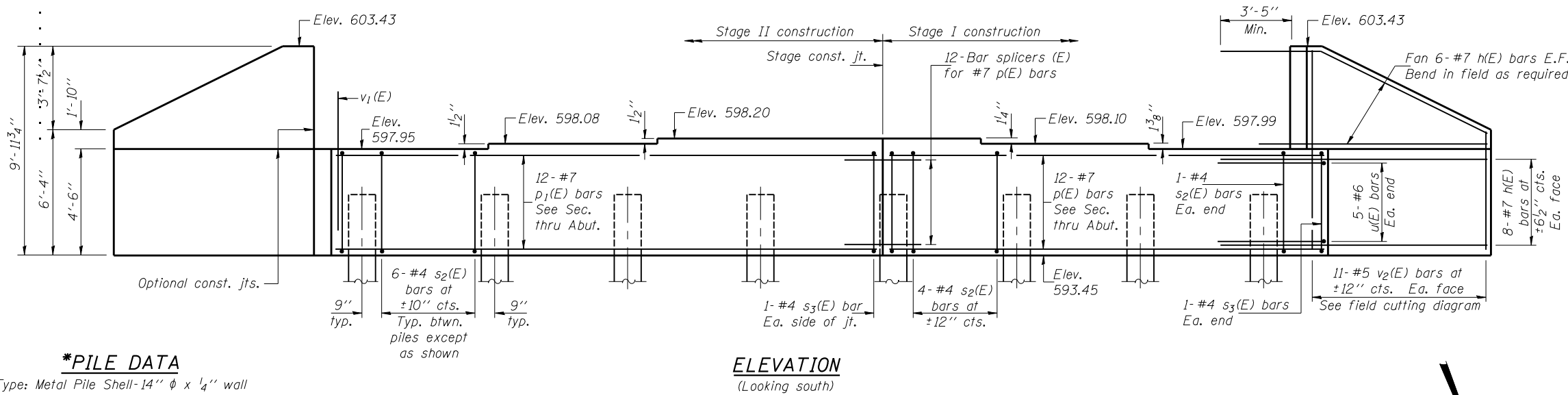


STATE OF ILLINOIS
DEPARTMENT OF TRANSPORTATION

ROUTE NO.	SECTION	COUNTY	TOTAL SHEETS	SHEET NO.	SHEET NO. 14 20 SHEETS
FAP 662	(V,T)B-2	MACOUPIN	66	40	
FED. ROAD DIST. NO. 7	ILLINOIS	FED. AID PROJECT-			

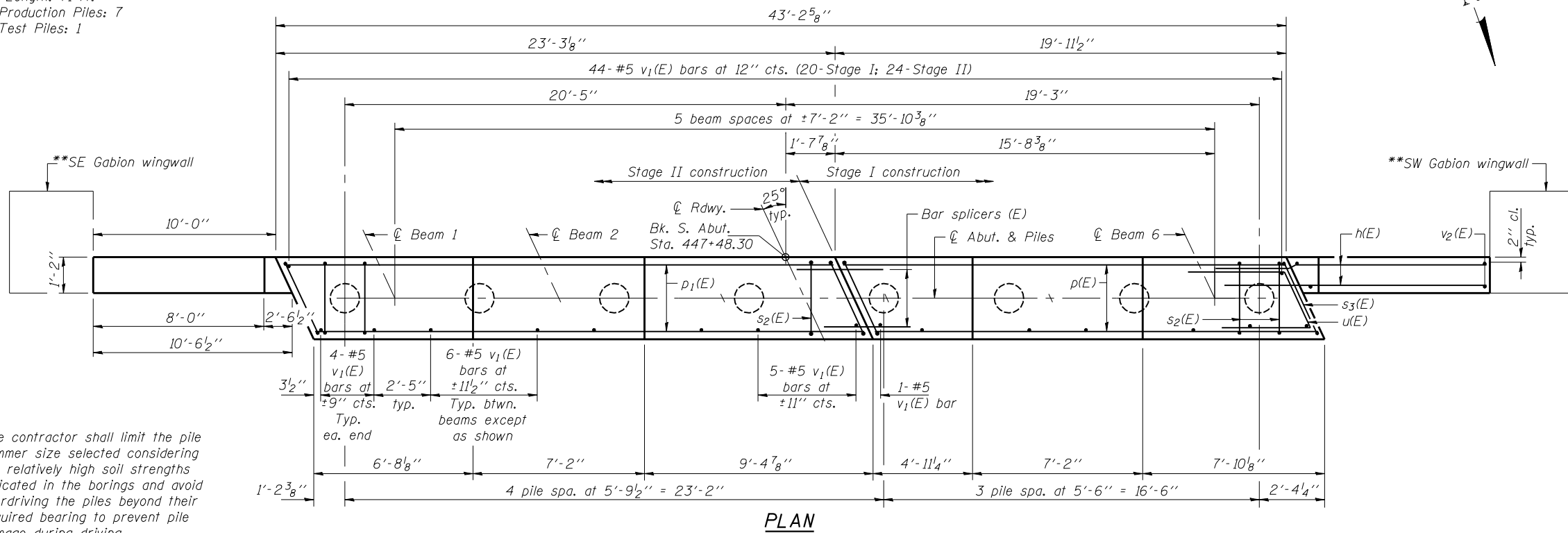
Contract #72993

Notes: . Pour steps monolithically with cap.
. For details of bar splicers, see sheet 17 of 20.
. For details of piles, see sheet 16 of 20.



***PILE DATA**

Type: Metal Pile Shell-14" ϕ x 1/4" wall
Nominal Required Bearing: 398 kips
Factored Resistance Available: 199 kips
Est. Length: 71 ft.
No. Production Piles: 7
No. Test Piles: 1

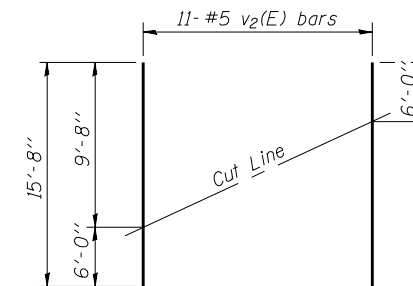
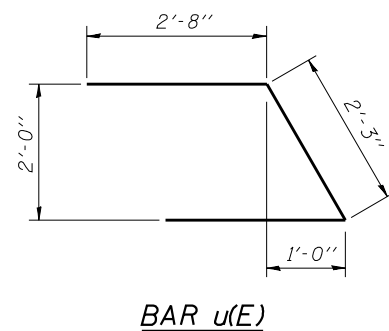
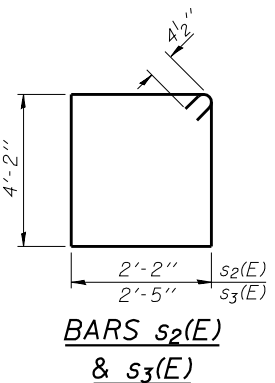


*The contractor shall limit the pile hammer size selected considering the relatively high soil strengths indicated in the borings and avoid overdriving the piles beyond their required bearing to prevent pile damage during driving.

**For gabion wingwall details, see sheet 15 of 20.

BILL OF MATERIAL

Bar	No.	Size	Length	Shape
h(E)	28	#7	14'-0"	—
p(E)	12	#7	19'-8"	—
p ₁ (E)	12	#7	22'-11"	—
s ₂ (E)	42	#4	13'-5"	□
s ₃ (E)	4	#4	13'-11"	□
u(E)	10	#6	7'-7"	⌒
v ₁ (E)	82	#5	4'-4"	—
v ₂ (E)	22	#5	15'-8"	—
Concrete Structures				Cu. Yd. 26.1
Reinforcement Bars, Epoxy Coated				Pound 3100
Structure Excavation				Cu. Yd. 106.5
Furnishing Metal Shell Piles 14"				Foot 497
Driving Piles				Foot 497
Test Pile Metal Shells				Each 1



Order v₂(E) full length. Cut as shown and use remainder of bars in opposite face.

DESIGNED	DPN
CHECKED	AJB
DRAWN	h.t. duong
CHECKED	FT/AJB/DPN

Jan 23, 2007

EXAMINED *Thomas J. Domagala*
ENGINEER OF BRIDGE DESIGN

PASSED *Ralph E. Anderson*
ENGINEER OF BRIDGES AND STRUCTURES

SOUTH ABUTMENT
F.A.P. RT. 662 SECTION (V,T)B-2
MACOUPIN COUNTY
STATION 447+03.80
STRUCTURE NO. 059-0504