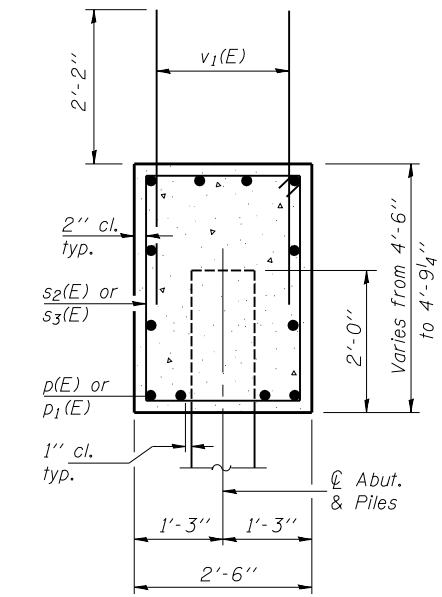
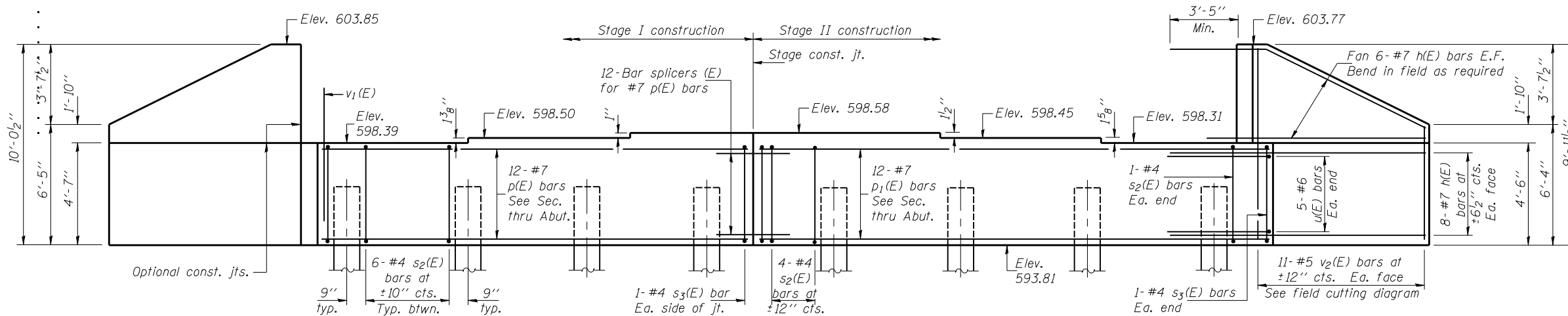


Notes: . Pour steps monolithically with cap.  
 . For details of bar splicers, see sheet 17 of 20.  
 . For details of piles, see sheet 16 of 20.

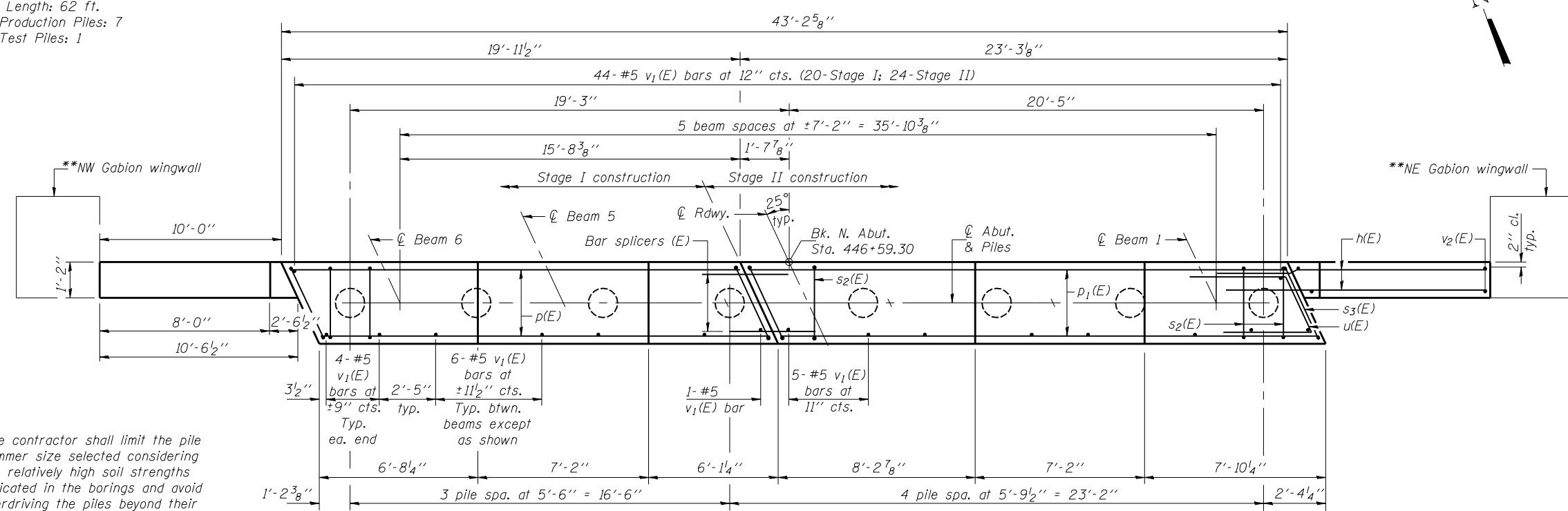
STATE OF ILLINOIS  
 DEPARTMENT OF TRANSPORTATION

ROUTE NO.	SECTION	COUNTY	TOTAL SHEETS	SHEET NO.	SHEET NO. 13 20 SHEETS
FAP 662	V.TIB-2	MACOUPIN	66	39	
FED. ROAD DIST. NO. 7	ILLINOIS	FED. AID PROJECT-			

Contract #72993



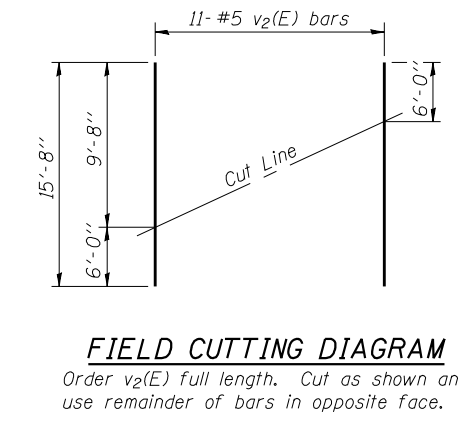
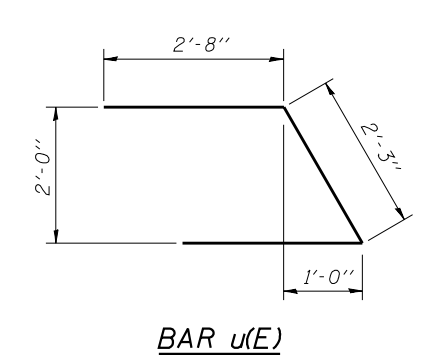
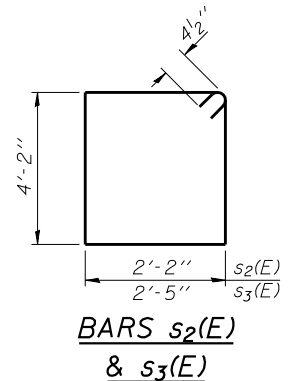
**\*PILE DATA**  
 Type: Metal Pile Shell-14" φ x 1/4" wall  
 Nominal Required Bearing: 398 kips  
 Factored Resistance Available: 199 kips  
 Est. Length: 62 ft.  
 No. Production Piles: 7  
 No. Test Piles: 1



\*The contractor shall limit the pile hammer size selected considering the relatively high soil strengths indicated in the borings and avoid overdriving the piles beyond their required bearing to prevent pile damage during driving.  
 \*\*For gabion wingwall details, see sheet 15 of 20.

**BILL OF MATERIAL**

Bar	No.	Size	Length	Shape
h(E)	28	#7	14'-0"	—
p(E)	12	#7	19'-8"	—
p <sub>1</sub> (E)	12	#7	22'-11"	—
s <sub>2</sub> (E)	42	#4	13'-5"	□
s <sub>3</sub> (E)	4	#4	13'-11"	□
u(E)	10	#6	7'-7"	∩
v <sub>1</sub> (E)	82	#5	4'-4"	—
v <sub>2</sub> (E)	22	#5	15'-8"	—
Concrete Structures			Cu. Yd.	26.2
Reinforcement Bars, Epoxy Coated			Pound	3100
Structure Excavation			Cu. Yd.	106.5
Furnishing Metal Shell Piles 14"			Foot	434
Driving Piles			Foot	434
Test Pile Metal Shells			Each	1



DESIGNED	DPN
CHECKED	AJB
DRAWN	h.t. duong
CHECKED	FT/AJB/DPN

Jan 23, 2007  
 EXAMINED *Thomas J. Domagalaki*  
 ENGINEER OF BRIDGE DESIGN  
 PASSED *Ralph E. Anderson*  
 ENGINEER OF BRIDGES AND STRUCTURES

**NORTH ABUTMENT**  
 F.A.P. RT. 662 - SECTION (V,T)B-2  
 MACOUPIN COUNTY  
 STATION 447+03.80  
 STRUCTURE NO. 059-0504