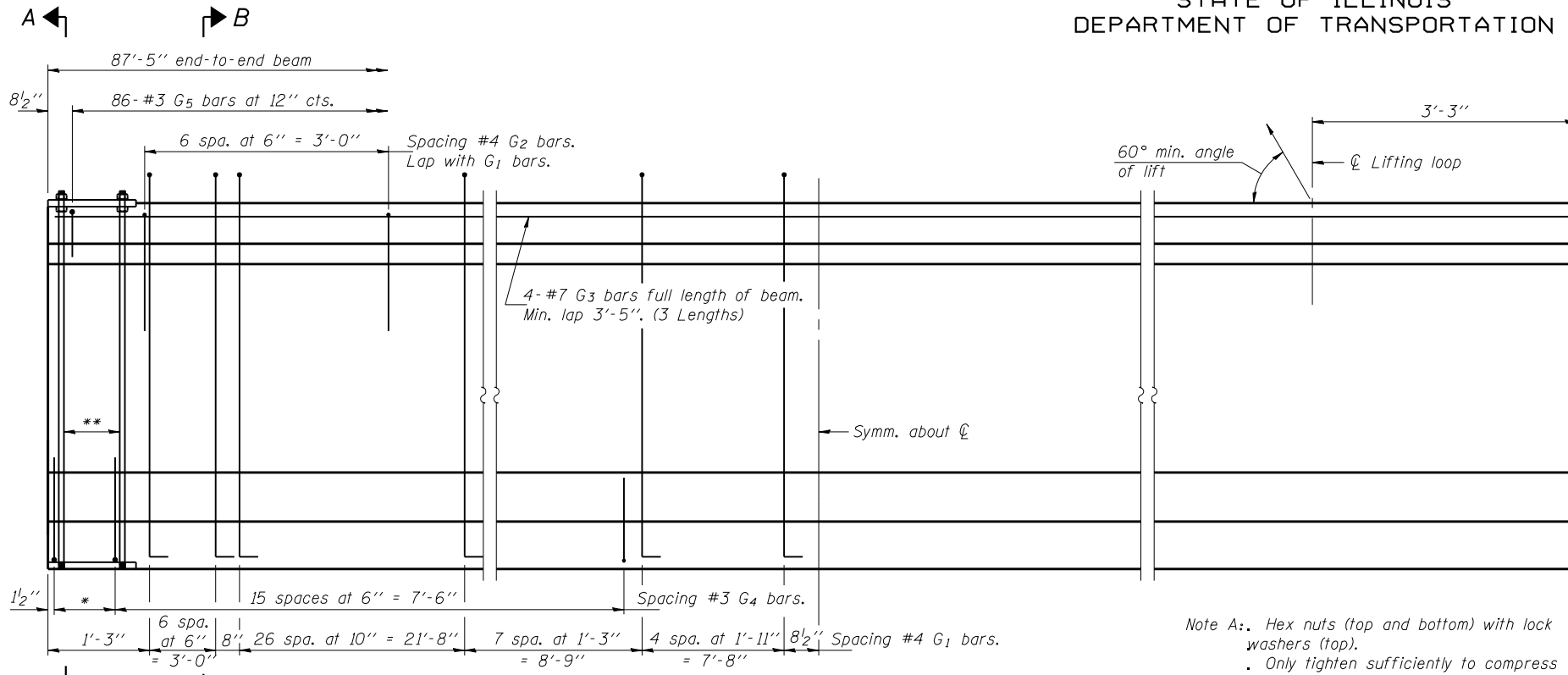


STATE OF ILLINOIS
DEPARTMENT OF TRANSPORTATION

ROUTE NO.	SECTION	COUNTY	TOTAL SHEETS	SHEET NO.	SHEET NO. 11
FAP 662	V.T.B-2	MACOUPIN	66	37	20 SHEETS
FED. ROAD DIST. NO. 7	ILLINOIS	FED. AID PROJECT			

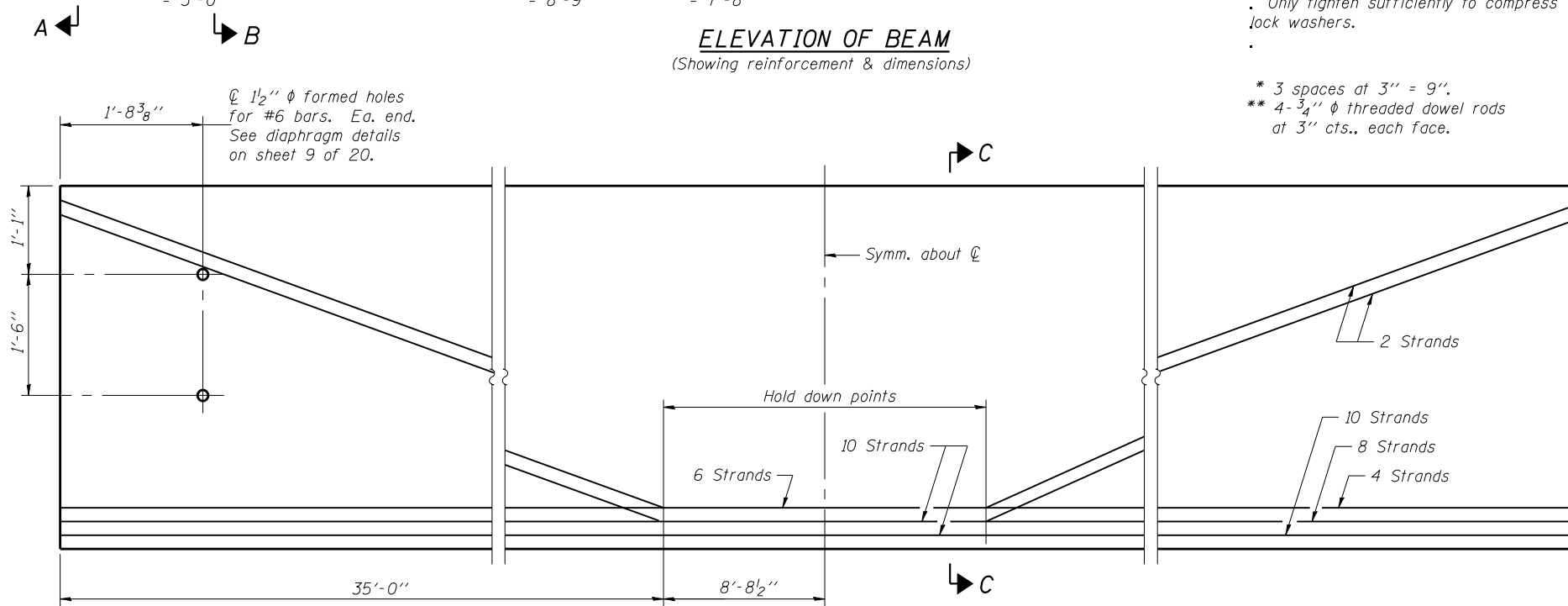
Contract #72993



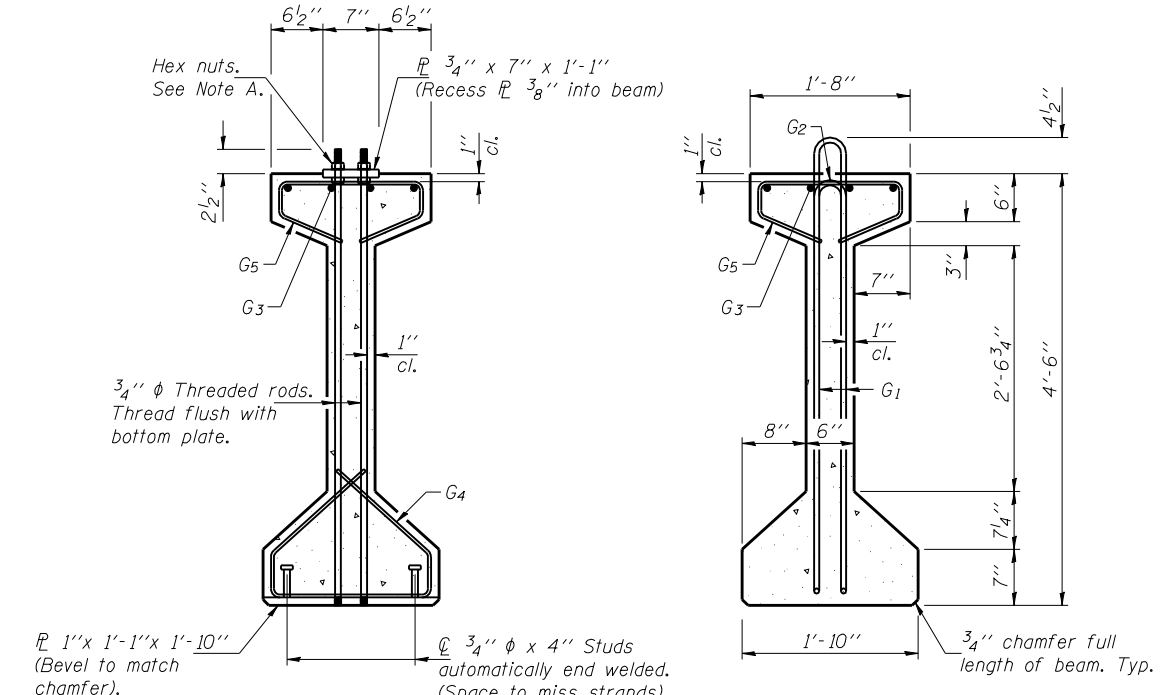
ELEVATION OF BEAM
(Showing reinforcement & dimensions)

Note A.: Hex nuts (top and bottom) with lock washers (top).
Only tighten sufficiently to compress lock washers.

* 3 spaces at 3" = 9".
** 4- 3/4" φ threaded dowel rods at 3" cts., each face.

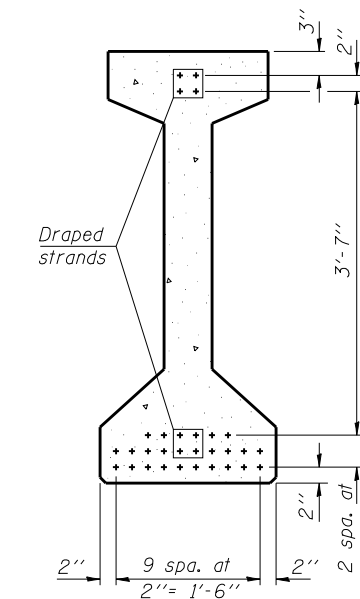


ELEVATION OF BEAM
(Showing prestressing steel)



SECTION A-A

SECTION B-B



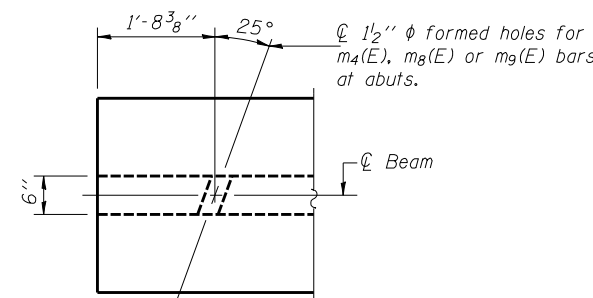
SECTION C-C

*****BAR LIST**
ONE BEAM ONLY

Bar	No.	Size	Length	Shape
G ₁	90	#4	10'-5"	⊏
G ₂	14	#4	5'-4"	⊏
G ₃	12	#7	31'-4"	⊏
G ₄	38	#3	4'-11"	⊏
G ₅	86	#3	3'-5"	⊏

***For information only.

Notes: . See sheet 12 of 20 for additional details and Bill of Material.
. Required release strength, f'ci, shall be 5000 psi.



END OF BEAM-PLAN

DESIGNED	DPN
CHECKED	AJB
DRAWN	h.t. duong
CHECKED	FT/AJB/DPN

Jan 23, 2007

EXAMINED *Thomas J. Domagalick*
ENGINEER OF BRIDGE DESIGN

PASSED *Ralph E. Anderson*
ENGINEER OF BRIDGES AND STRUCTURES

PI-4-54

11-1-06

54" PPC I-BEAM
F.A.P. RT. 662 SECTION (V.T)B-2
MACOUPIN COUNTY
STATION 447+03.80
STRUCTURE NO. 059-0504