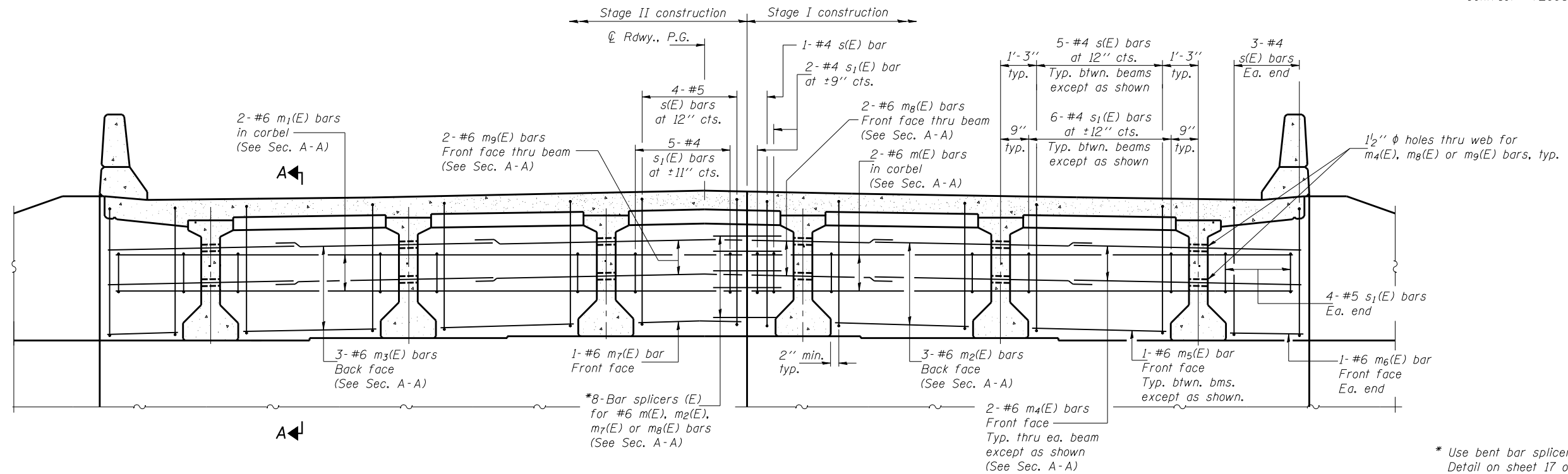


STATE OF ILLINOIS
DEPARTMENT OF TRANSPORTATION

ROUTE NO.	SECTION	COUNTY	TOTAL SHEETS	SHEET NO.	SHEET NO. 9
FAP 662	V.T)B-2	MACOUPIN	66	35	20 SHEETS
FED. ROAD DIST. NO. 7	ILLINOIS	FED. AID PROJECT			

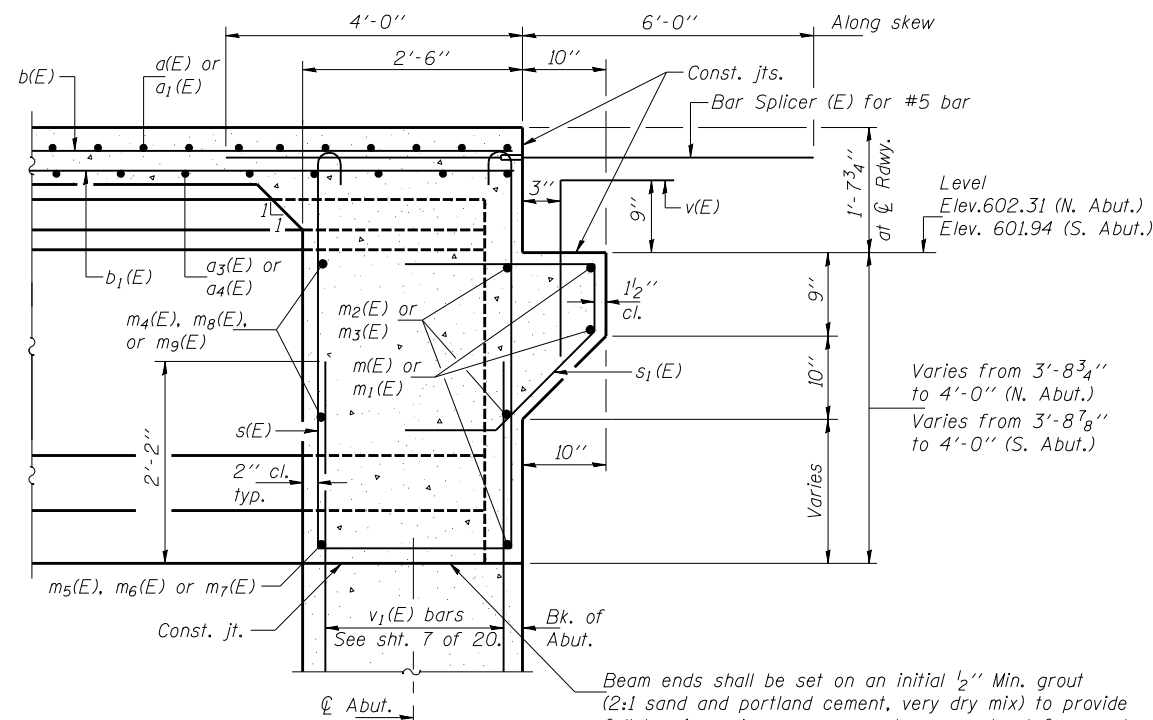
Contract #72993



* Use bent bar splicers in front face. Detail on sheet 17 of 20.

DIAPHRAGM ELEVATION AT SOUTH ABUTMENT

(Looking south - North Abut. similar)



MIN. BAR LAPS

#6 bars = 2'-9"

- Notes:
- Reinforcement bars in diaphragm are billed with superstructure on sheet 8 of 20.
 - Concrete in diaphragm is included with concrete superstructure on sheet 8 of 20.
 - For details of bar splicers, see sheet 17 of 20.
 - For details of bars $s(E)$ and $s_1(E)$ see sheet 8 of 20.
 - The $s(E)$ and $s_1(E)$ bars shall be placed parallel to the beams. Spacing for these bars shall be at right angles to the beams.

DESIGNED	DPN
CHECKED	AJB
DRAWN	h.t. duong
CHECKED	FT/AJB/DPN

Jan 23, 2007

EXAMINED *Thomas J. Domagala*
ENGINEER OF BRIDGE DESIGN

PASSED *Ralph E. Anderson*
ENGINEER OF BRIDGES AND STRUCTURES

SECTION A-A

Dimensions are at right L's to abutments, except as shown.

DIAPHRAGM DETAILS
F.A.P. RT. 662 SECTION (V.T)B-2
MACOUPIN COUNTY
STATION 447+03.80
STRUCTURE NO. 059-0504