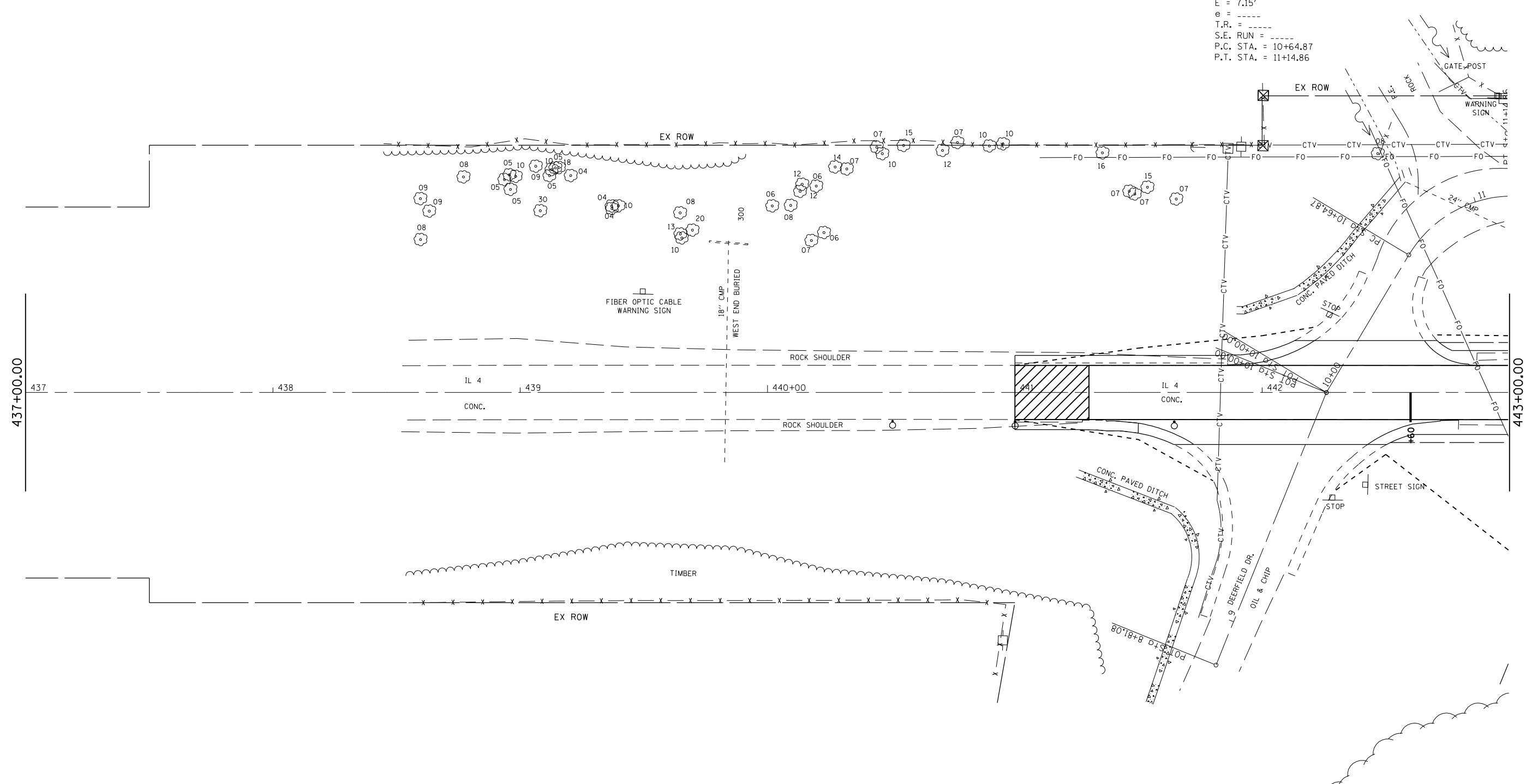


F.A. RTE.	SECTION	COUNTY	TOTAL SHEETS	SHEET NO.
662		MACOUPIN	66	22
STA.		TO STA.		
FED. ROAD DIST. NO.	ILLINOIS	FED. AID PROJECT		

EXIST. CURVE 5144  
 PI STA. = 10+92.29  
 $\Delta = 58^\circ 27' 58''$  (RT)  
 $D = 116^\circ 56' 44''$   
 $R = 48.99'$   
 $T = 27.42'$   
 $L = 49.99'$   
 $E = 7.15'$   
 $e = \text{-----}$   
 $T.R. = \text{-----}$   
 $S.E. \text{ RUN} = \text{-----}$   
 $P.C. \text{ STA.} = 10+64.87$   
 $P.T. \text{ STA.} = 11+14.86$

• (V,T)B-2



PLOT DATE = 1/30/2007  
 FILE NAME = c:\projects\662993\shots\stage2.dgn  
 PLOT SCALE = 42.353' / IN.  
 REFERENCE = #REF#

REVISIONS	
NAME	DATE

ILLINOIS DEPARTMENT OF TRANSPORTATION

**STAGE 2**  
PLAN VIEW

SCALE: VERT. \_\_\_\_\_  
 HORIZ. \_\_\_\_\_  
 DATE \_\_\_\_\_

DRAWN BY \_\_\_\_\_  
 CHECKED BY \_\_\_\_\_