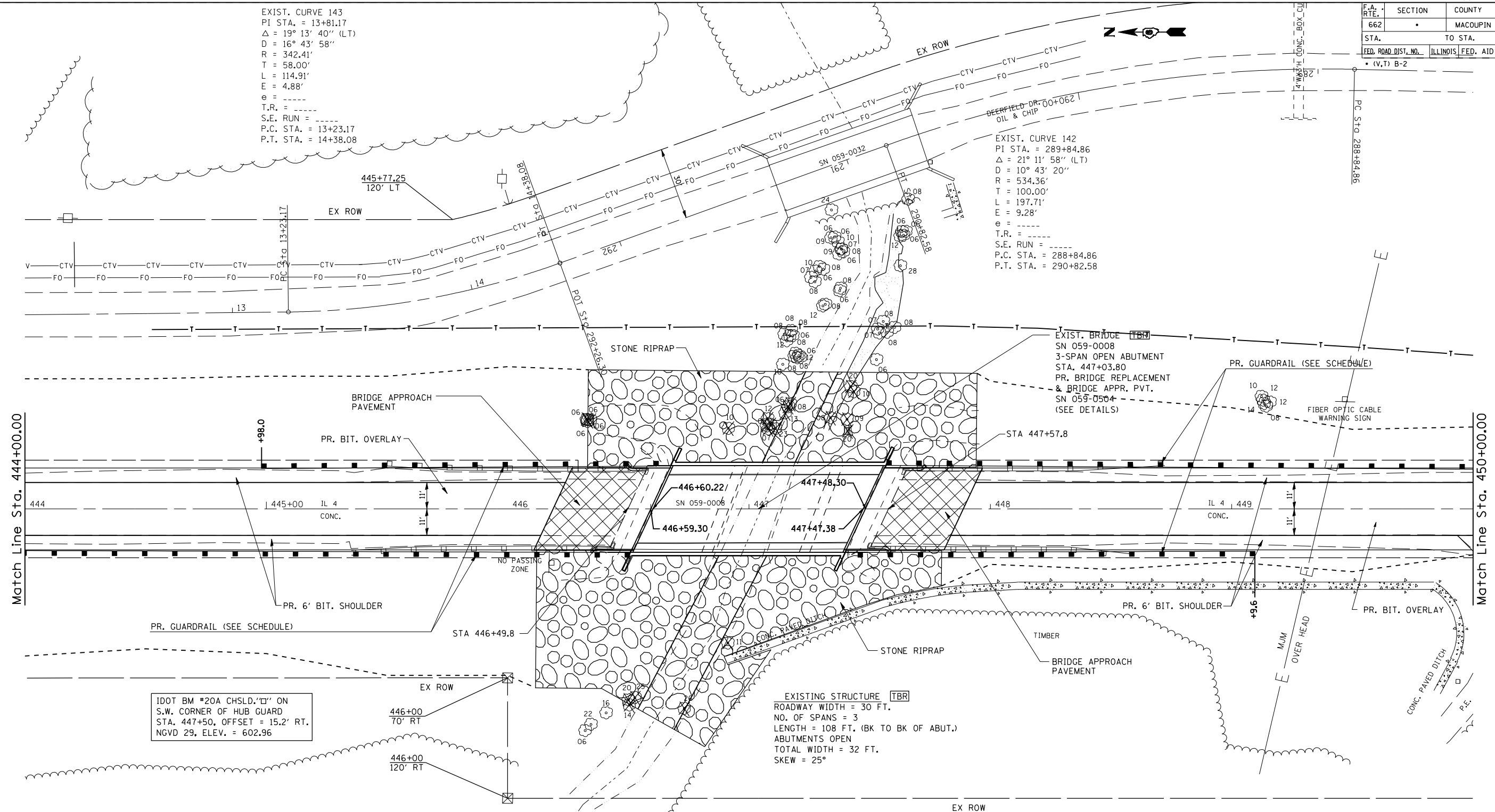


F.A. RTE.	SECTION	COUNTY	TOTAL SHEETS	SHEET NO.
662	.	MACOUPIN	66	15
STA.		TO STA.		
FED. ROAD DIST. NO.		ILLINOIS FED. AID PROJECT		
• (V,T) B-2				


EXIST. CURVE 143
 PI STA. = 13+81.17
 $\Delta = 19^\circ 13' 40''$ (LT)
 $D = 16^\circ 43' 58''$
 $R = 342.41'$
 $T = 58.00'$
 $L = 114.91'$
 $E = 4.88'$
 $e =$
 $T.R. =$
 $S.E. RUN =$
 $P.C. STA. = 13+23.17$
 $P.T. STA. = 14+38.08$

EXIST. CURVE 142
 PI STA. = 289+84.86
 $\Delta = 21^\circ 11' 58''$ (LT)
 $D = 10^\circ 43' 20''$
 $R = 534.36'$
 $T = 100.00'$
 $L = 197.71'$
 $E = 9.28'$
 $e =$
 $T.R. =$
 $S.E. RUN =$
 $P.C. STA. = 288+84.86$
 $P.T. STA. = 290+82.58$



IDOT BM *20A CHSLD. "I" ON S.W. CORNER OF HUB GUARD STA. 447+50, OFFSET = 15.2' RT. NGVD 29, ELEV. = 602.96

PROPOSED GUARDRAIL
 EACH APPROACH : 175 LF STEEL PLATE BEAM GUARD RAIL, TYPE A
 1 - TYPE 1 SPECIAL TERMINAL (TANGENT)
 1 - TYPE 6 TERMINAL
 EACH DEPARTURE : 87.5 LF STEEL PLATE BEAM GUARD RAIL, TYPE A
 1 - TYPE 1 SPECIAL TERMINAL (TANGENT)
 1 - TYPE 6 TERMINAL

 PROP. PCC PAVEMENT REMOVAL
 STA. 446+19.80 TO 446+49.80
 STA 447+57.80 TO 447+87.80
 PROP. PCC BRIDGE APPROACH PAVT/BRIDGE DECK
 STA. 446+29.30 TO 447+78.30

REVISIONS	
NAME	DATE

ILLINOIS DEPARTMENT OF TRANSPORTATION
PLAN VIEW
 SCALE: VERT. / HORIZ.
 DATE / DRAWN BY / CHECKED BY

PLOT DATE = 1/30/2007
 FILE NAME = c:\projects\652685\shplan.dgn
 PLOT SCALE = 4.23525 / IN.
 USER NAME = laughlin-1