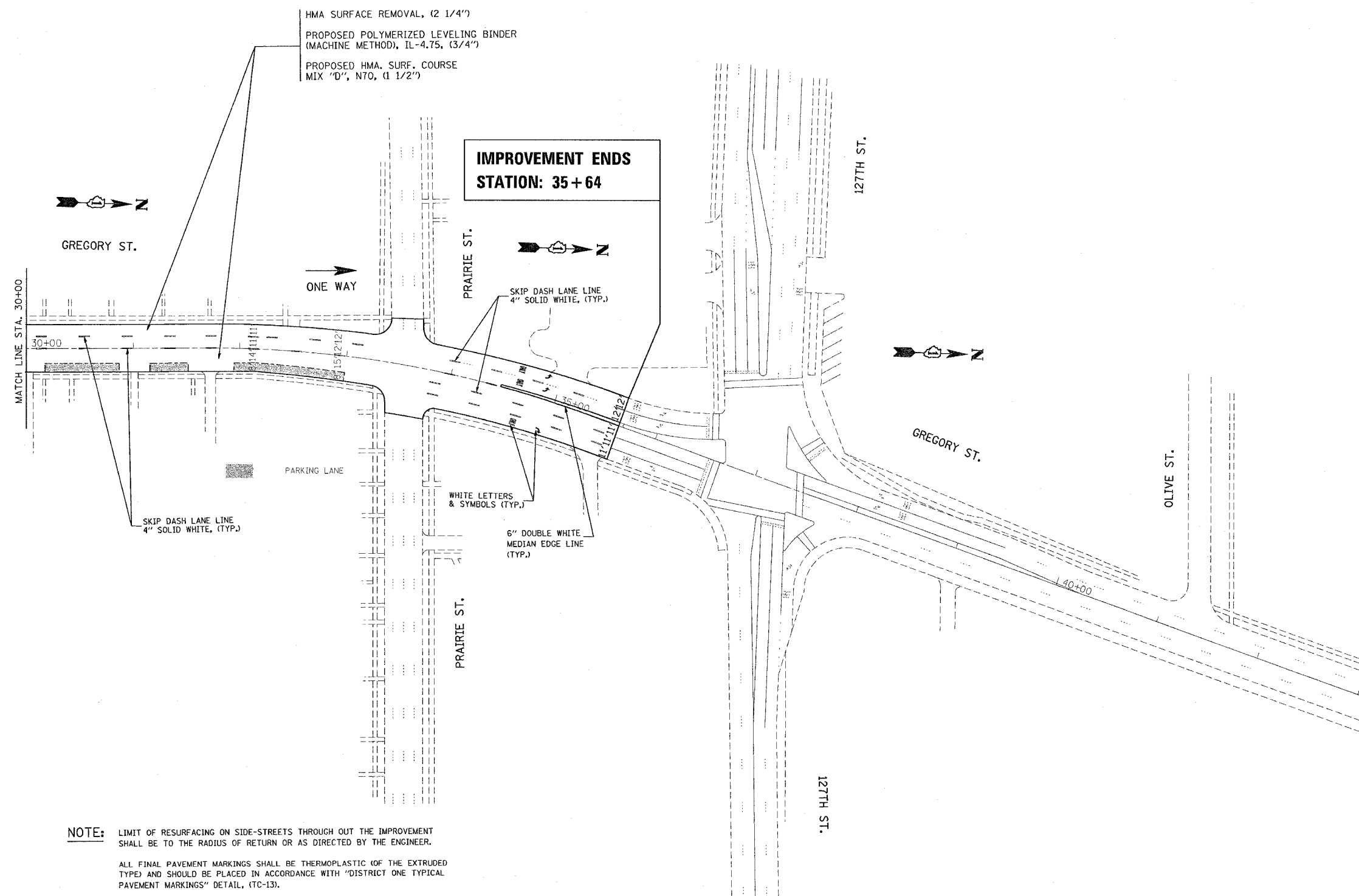


F.A.U. RTE.	SECTION	COUNTY	TOTAL SHEETS	SHEET NO.
2846	55-1414R-RS	COOK	25	10
STA. 30+00		TO STA. 43+00		
FED. ROAD DIST. NO.	ILLINOIS	FED. AID PROJECT		



**NOTE:** LIMIT OF RESURFACING ON SIDE-STREETS THROUGH OUT THE IMPROVEMENT SHALL BE TO THE RADIUS OF RETURN OR AS DIRECTED BY THE ENGINEER.

ALL FINAL PAVEMENT MARKINGS SHALL BE THERMOPLASTIC (OF THE EXTRUDED TYPE) AND SHOULD BE PLACED IN ACCORDANCE WITH "DISTRICT ONE TYPICAL PAVEMENT MARKINGS" DETAIL, (TC-13).

REVISIONS	
NAME	DATE

ILLINOIS DEPARTMENT OF TRANSPORTATION

ROADWAY AND PAVEMENT MARKING PLANS

SCALE: VERT. 1" = 50'  
 HORIZ. DATE

DRAWN BY  
 CHECKED BY

PLOT DATE = 12/28/2006  
 FILE NAME = c:\nrc\projects\131405\design\oa.dgn  
 PLOT SCALE = 5/8" = 1' / IN.  
 USER NAME = jpenj