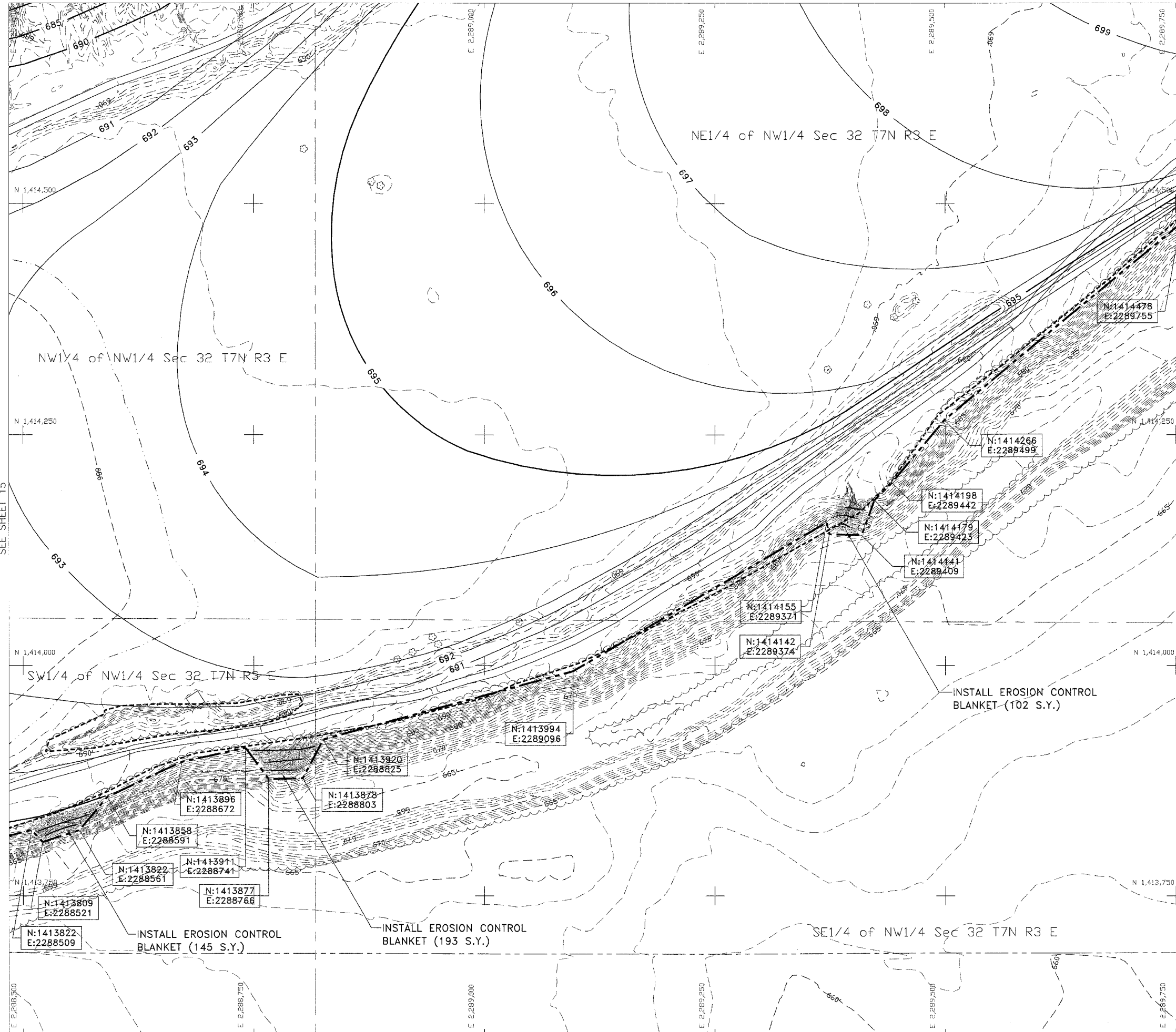


SEE SHEET 12



SEE SHEET 17

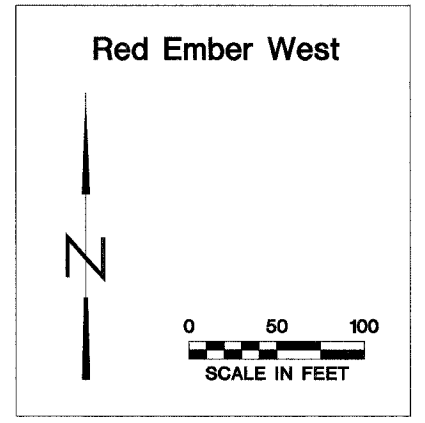
SEE SHEET 15

	4	5	6
7	8	9	10
11	12	13	14
15	16	17	

Sheet Layout

- 600' --- EXISTING CONTOUR
- 600 — PROPOSED CONTOUR
- - - - - EDGE OF MINE REFUSE
- — — — — CONSTRUCTION LIMITS
- — — — — EDGE OF ROAD
- ~~~~~ TREELINE
- - - - - EDGE OF WATER
- ⊙ SURVEY CONTROL POINT
- B-# • BORING
- ▨ EROSION CONTROL BLANKET

Legend



State of Illinois
Department of Natural Resources

Red Ember - West
Reclamation Project
AML-GFuE-0504
Fulton County

Drawn By: V.P., M-LF
Checked By:
Date: 1/24/2007

Existing & Proposed
Conditions
Sheet
16 of 51