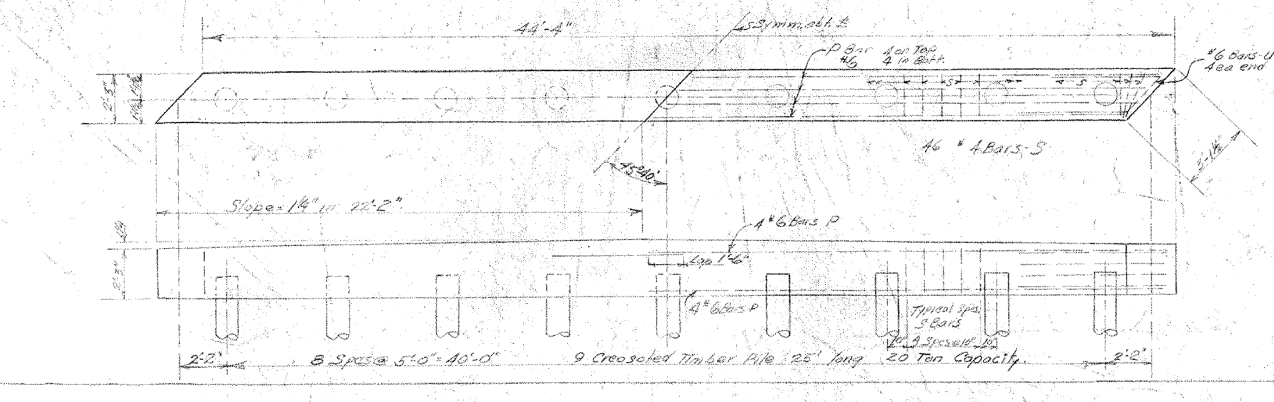
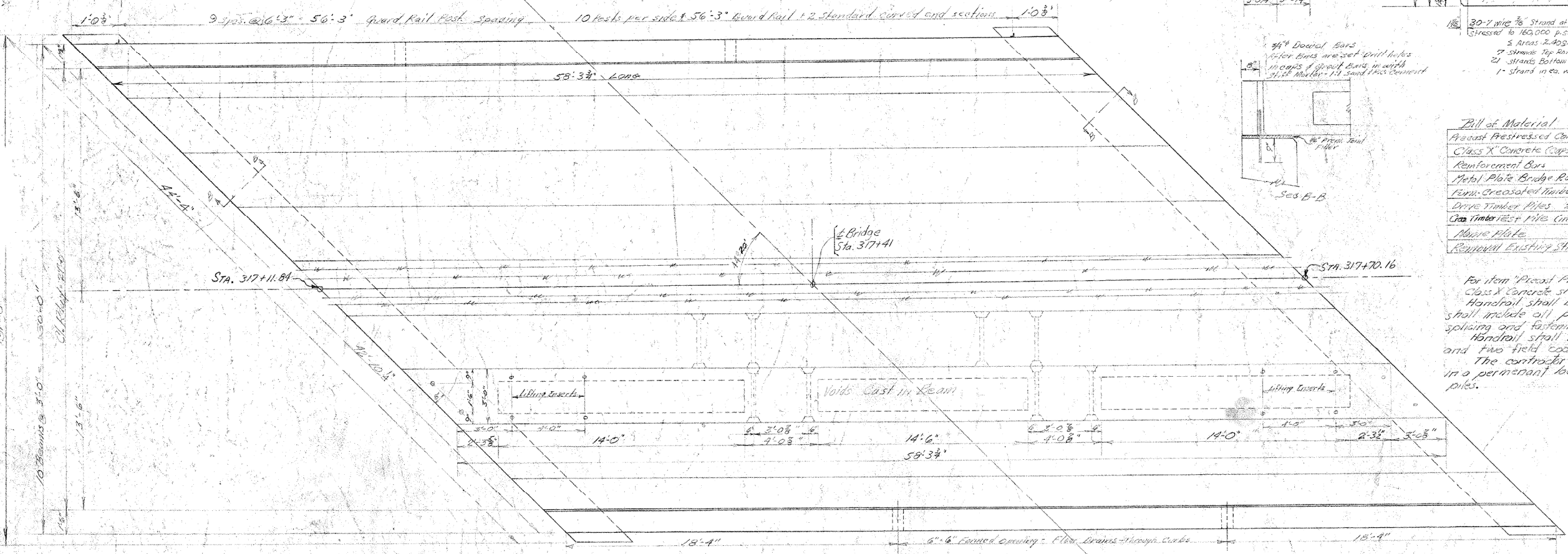
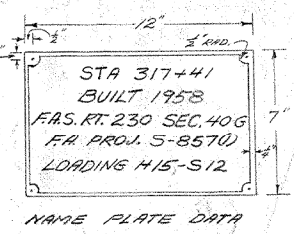


Bill of Material

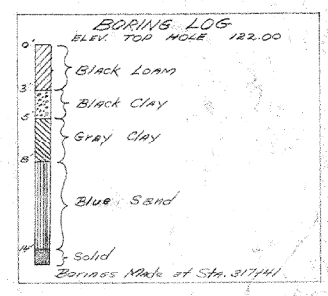
Precast Prestressed Concrete Bridge Deck	Sq. Ft.	1750
Class X Concrete (Cops 1/4" x Curb 5/8" x 1/2")	Lbs.	22.7
Reinforcement Bars	Lbs.	1870
Metal Plate Bridge Rail	Lin. Ft.	112.5
Form-Creosoted Timber Piles 25'	Lin. Ft.	42.5
Drive Timber Piles 25'	Lin. Ft.	42.5
Crane Timber Rest Pile (in location)	one	
Moore plate	one	
Removal Existing Structure	one	

GENERAL NOTES
 For item 'Precast Prestressed Concrete Bridge Deck' see Special Provisions.
 Class X Concrete shall be used in curbs and pile caps.
 Handrail shall be paid for as 'Metal Plate Bridge Rail' and shall include all posts, bolts, nuts and washers required for splicing and fastening to bridge.
 Handrail shall receive one shop coat of red lead paint and two field coats of aluminum paint.
 The contractor shall drive one creosoted timber test pile in a permanent location before ordering the remainder of piles.



REINFORCING BARS IN P. CAPS

No.	Bar	Size	Length	Shape
32	P	#6	22'-9"	
16	U	#6	18'-0"	
24	S	#4	8'-0"	
Total Reinforcing Bars 1870 Lbs.				



WATERWAY INFORMATION

DRAINAGE AREA	1900 ACRES
CHARACTER	ROLLING, CLAY CULTIVATED
OPENING REQ. FOR 15 YEAR FLOOD	118 SQ. FT.
PRESENT BRIDGE OPENING	100 SQ. FT.
PROPOSED BRIDGE OPENING	118 SQ. FT.

PROJECT S-8570 (1)
 FAS. RT. 230 SECTION 40G
 HENRY COUNTY
 STA. 317+41

MICROFILMED COPY - 1958