

STATE OF ILLINOIS
DEPARTMENT OF TRANSPORTATION

FAU RTE.	SECTION	COUNTY	TOTAL SHEETS	SHEET NO.
9110	(31-15)Q	MADISON	6	1
		ILLINOIS	CONTRACT NO. 76T33	

FOR INDEX OF SHEETS, SEE SHEET NO. 2

PROPOSED HIGHWAY PLANS

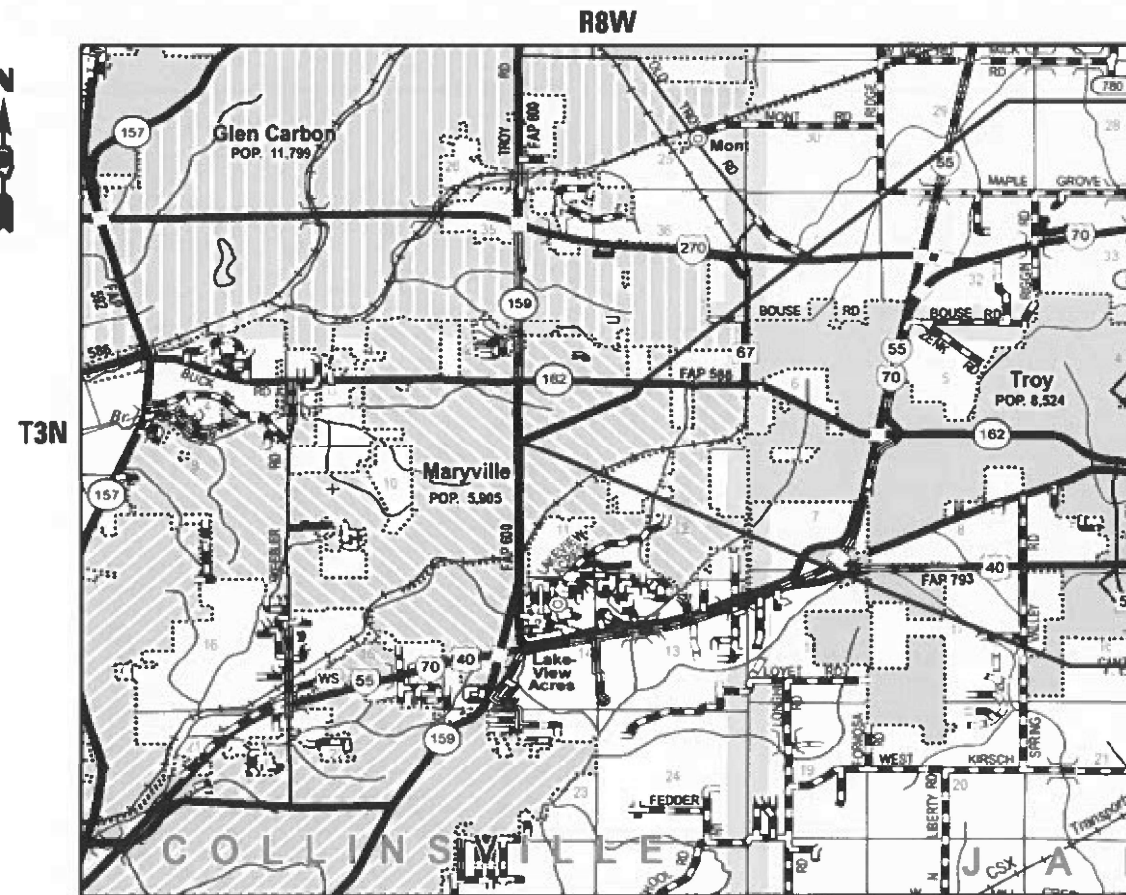
FAU ROUTE 9110 (VADALABENE DRIVE)
SECTION (31-15)Q
SMART RESURFACING
MADISON COUNTY

C-98-096-23



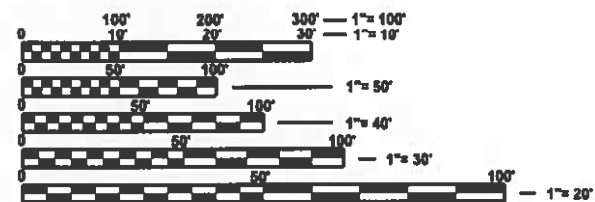
BEGIN PROJECT
IL 162
LAT: 38.737979
LONG: -89.941675

END PROJECT
IL 159
LAT: 38.731463
LONG: -89.956747



GROSS LENGTH = 4752 FT. = 0.9 MILE
NET LENGTH = 4752 FT. = 0.9 MILE

MAP NOT TO SCALE



FULL SIZE PLANS HAVE BEEN PREPARED USING STANDARD ENGINEERING SCALES. REDUCED SIZED PLANS WILL NOT CONFORM TO STANDARD SCALES. IN MAKING MEASUREMENTS ON REDUCED PLANS, THE ABOVE SCALES MAY BE USED.

J.U.L.I.E.
JOINT UTILITY LOCATION INFORMATION FOR EXCAVATION
1-800-892-0123
OR 811

PROJECT ENGINEER: CHERYL KEPLAR
PROJECT MANAGER: JOHN GREEN

CONTRACT NO. 76T33

STATE OF ILLINOIS
DEPARTMENT OF TRANSPORTATION

SUBMITTED December 21 2023
[Signature]
REGIONAL ENGINEER

February 2, 2024
[Signature]
ENGINEER OF DESIGN AND ENVIRONMENT

February 2, 2024
[Signature]
DIRECTOR OF HIGHWAYS PROJECT IMPLEMENTATION

PRINTED BY THE AUTHORITY
OF THE STATE OF ILLINOIS

PAVEMENT MARKING SCHEDULE

LOCATION	THERMOPLASTIC PAVEMENT MARKING - LINE 5"					SHORT TERM PAVEMENT MARKING (FT)	SHORT TERM PAVEMENT MARKING REMOVAL (SQ FT)	RAISED REFLECTIVE PAVEMENT MARKERS (EACH)	RAISED REFLECTIVE PAVEMENT MARKER REMOVAL (EACH)	TEMPORARY PAVEMENT MARKING - LINE 4" - PAINT (FT)	PAVEMENT MARKING REMOVAL - WATER BLASTING (SQ FT)
	SKIP-DASH YELLOW	SOLID YELLOW (FT)		SOLID WHITE	DOUBLE YELLOW LINE						
	(FT)	NO PASSING ZONE		(FT)	(FT)						
	CENTERLINE	WB	EB	EDGELINES	MEDIAN						
MP 0.00 TO 0.06	79		317	634		29	10	4	4	713	238
MP 0.06 TO 0.19		686	686	1373		62	21	9	9	2745	915
MP 0.19 TO 0.24	66		264	528		24	8	3	3	594	198
MP 0.24 TO 0.35	145		581	1162		53	18	7	7	1307	436
MP 0.35 TO 0.83	634			5069		230	77	32	32	5702	1901
MP 0.83 TO 0.90				739	740	34	11	5	5	1479	493
SUB-TOTAL	924	686	1,848	9,504	740						
TOTAL			13,702			432	144	60	60	12540	4180

RESURFACING SCHEDULE

LOCATION	WIDTH (FT)	BITUMINOUS MATERIALS, TACK COAT (LBS)	HMA SURFACE COURSE, IL-9.5, MIX "D", N70 (TON)	HMA SURFACE REMOVAL, 1.5" (SQ YD)	LONGITUDINAL JOINT SEALANT (FT)	AGGREGATE WEDGE SHOULDER, TYPE B (TON)
MP 0.00 TO 0.16	26	1098	205	2441	845	33
MP 0.16 TO 0.90	26	5079	948	11287	3907	152
TOTAL		6178	1,153	13,728	4,752	185

GUARDRAIL SCHEDULE

LOCATION	OFFSET	GUARDRAIL REMOVAL (FT)	STEEL PLATE BEAM GUARDRAIL, TYPE A, 6 FOOT POSTS (FT)	STRONG POST GUARDRAIL ATTACHED TO CULVERT (FT)	TRAFFIC BARRIER TERMINAL, TYPE 1 (SPECIAL) TANGENT (EACH)
MP 0.78 TO 0.81	WB	126	153	38	2
MP 0.78 TO 0.81	EB	136	83	38	2
TOTAL		262	235	75	4

MODEL: Final Pavement Schedule (Sheet)
FILE NAME: c:\pw\work\121010\121010_0.green@illinois.gov\0903066\0876133-shhschedule.dgn

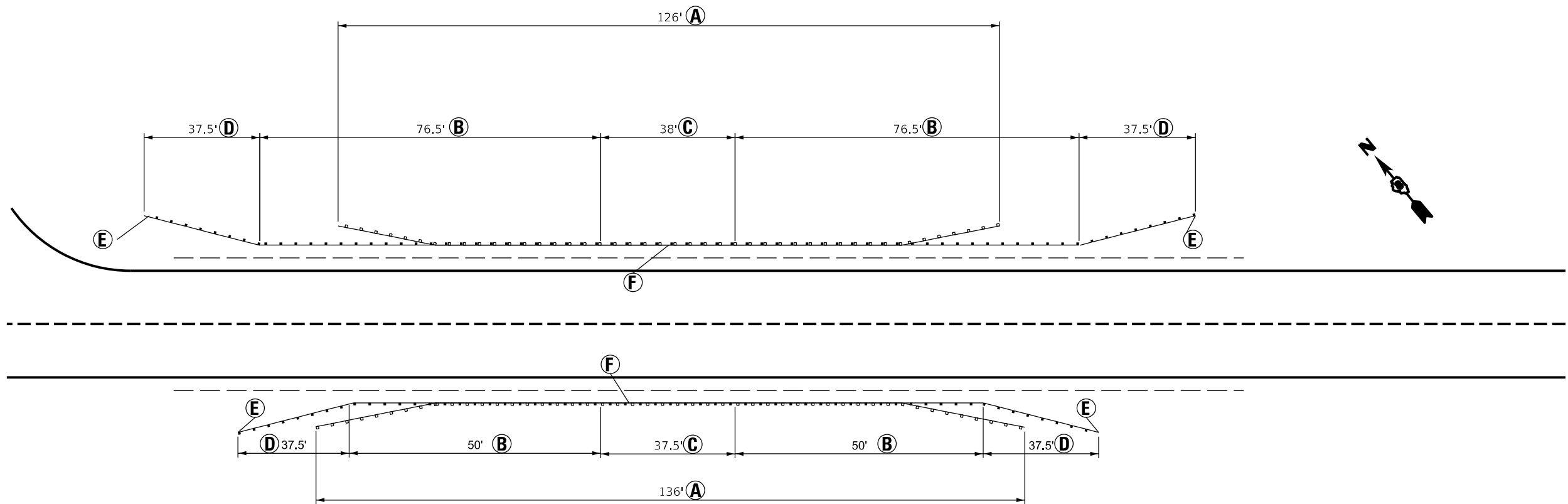
USER NAME = John.P.Green	DESIGNED -	REVISED -
	DRAWN -	REVISED -
PLOT SCALE = 0.16666633' / in.	CHECKED -	REVISED -
PLOT DATE = 12/22/2023	DATE -	REVISED -

**STATE OF ILLINOIS
DEPARTMENT OF TRANSPORTATION**

SCHEDULE OF QUANTITIES

SCALE: SHEET OF SHEETS STA. TO STA.

F.A.U. RTE.	SECTION	COUNTY	TOTAL SHEETS	SHEET NO.
9110	(31-15)Q	MADISON	6	5
CONTRACT NO. 76T33				
ILLINOIS FED. AID PROJECT				



- (A)** GUARDRAIL REMOVAL
- (B)** STEEL PLATE BEAM GUARDRAIL, TYPE A, 6 FOOT POSTS
- (C)** STRONG POST GUARDRAIL ATTACHED TO CULVERT
- (D)** TRAFFIC BARRIER TERMINAL, TYPE 1 (SPECIAL) TANGENT
- (E)** TERMINAL MARKER – DIRECT APPLIED
- (F)** GUARDRAIL REFLECTORS, TYPE A (4 EACH SIDE)

THE GUARDRAIL ATTACHED TO STRUCTURE SHALL BE CENTERED AROUND THE BOX CULVERT AS DESIGNATED BY THE ENGINEER.

MODEL: Guardrail Details-1 (Sheet)
 FILE NAME: c:\pwworking\john.p.green@illinois.gov\0903066\08767133-shhschedule.dgn

USER NAME = John.P.Green	DESIGNED -	REVISED -
	DRAWN -	REVISED -
PLOT SCALE = 0.16666633' / in.	CHECKED -	REVISED -
PLOT DATE = 12/27/2023	DATE -	REVISED -

**STATE OF ILLINOIS
DEPARTMENT OF TRANSPORTATION**

GUARDRAIL DETAILS

SCALE: SHEET OF SHEETS STA. TO STA.

F.A.U. RTE. 9110	SECTION (31-15)Q	COUNTY MADISON	TOTAL SHEETS 6	SHEET NO. 6
CONTRACT NO. 76T33			ILLINOIS FED. AID PROJECT	