

F.A.I. RTE.	SECTION	COUNTY	TOTAL SHEETS	SHEET NO.
I-70	(26-3) RS-1	FAYETTE	21	1
		ILLINOIS	CONTRACT NO. 74981	

03-08-2024 LETTING ITEM 068

STATE OF ILLINOIS
DEPARTMENT OF TRANSPORTATION

PROPOSED HIGHWAY PLANS

F.A.I. ROUTE 70 (I-70)
SECTION (26-3) RS-1
PROJECT NHPP-5WEP(148)
SMART OVERLAY
FAYETTE COUNTY

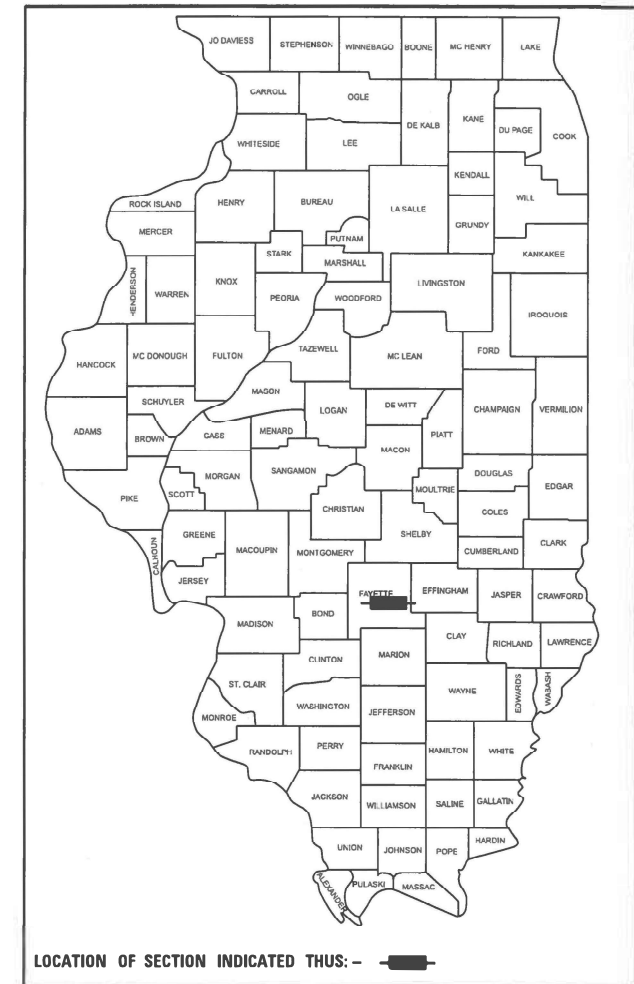
C-97-064-20

FOR INDEX OF SHEETS, SEE SHEET NO. 2

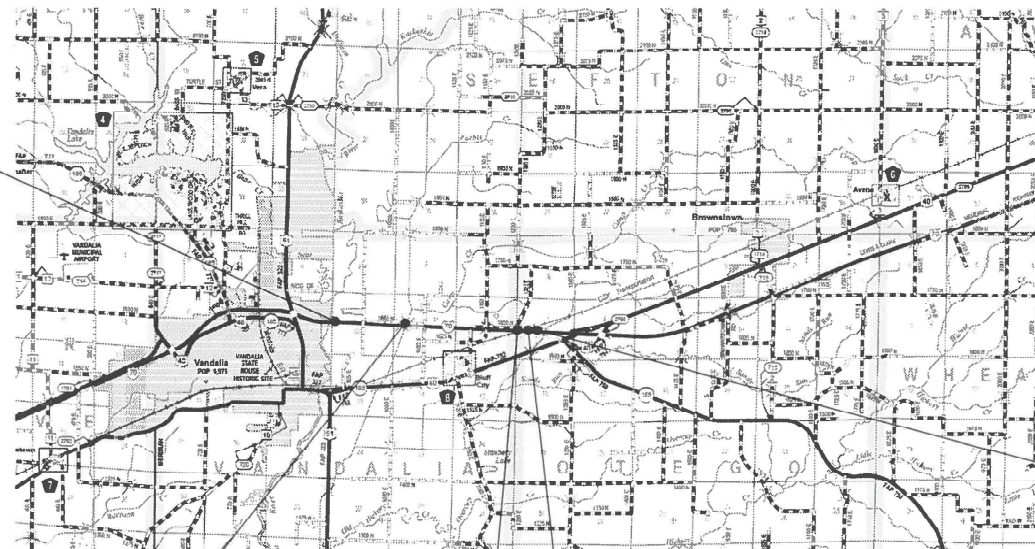
STATION EQUATION BK: 721 + 10.10 AH: 647 + 11.45

2021 ADT = 25,000

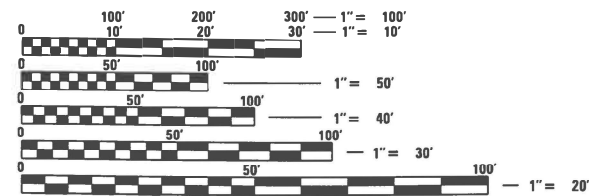
D-97-058-20



BEGIN PROJECT
WB 549 + 85.68
EB 549 + 62.60



END PROJECT
WB 655 + 62.87
EB 655 + 57.74



FULL SIZE PLANS HAVE BEEN PREPARED USING STANDARD ENGINEERING SCALES. REDUCED SIZED PLANS WILL NOT CONFORM TO STANDARD SCALES. IN MAKING MEASUREMENTS ON REDUCED PLANS, THE ABOVE SCALES MAY BE USED.

J.U.L.I.E.
JOINT UTILITY LOCATION INFORMATION FOR EXCAVATION
1-800-892-0123
OR 811

BRIDGE OMISSION
607 + 44.00 TO
613 + 42.00

BRIDGE OMISSION
708 + 10.00 TO
712 + 82.00

STATION EQUATION
721 + 10.10 (BK)
647 + 11.45 (AH)



12/15/23
Exp. 11/30/25

PROJECT ENGINEER: MATT BOWER, P.E.
PROJECT MANAGER: MICHAEL J. ROSBORG, P.E.

GROSS LENGTH = 17,999 FT. = 3.409 MILE
NET LENGTH = 16,929 FT. = 3.206 MILE

CONTRACT NO. 74981

STATE OF ILLINOIS
DEPARTMENT OF TRANSPORTATION

SUBMITTED DECEMBER 20 2023
Jeffrey P. Myrland REGIONAL ENGINEER
February 2, 2024
John A. Etk
ENGINEER OF DESIGN AND ENVIRONMENT
February 2, 2024
Steph M. Smith
DIRECTOR OF HIGHWAYS PROJECT IMPLEMENTATION

PRINTED BY THE AUTHORITY
OF THE STATE OF ILLINOIS

INDEX OF SHEETS

SHEET NO.	ITEM
1	COVER SHEET
2	INDEX OF SHEETS, HIGHWAY STANDARDS, AND GENERAL NOTES
3	SUMMARY OF QUANTITIES
4-5	TYPICAL CROSS SECTIONS
6-7	SCHEDULE OF QUANTITIES
8-14	PLAN SHEETS
15	MISCELLANEOUS DETAILS
16-19	780000-01-D7 PAVEMENT MARKING DETAILS
20-21	780000-02-D7 PAVEMENT MARKING DETAILS

THE FOLLOWING STANDARDS ARE A PART OF THESE PLANS AND ARE INCLUDED FOLLOWING THE LAST NUMBERED SHEET OF THE PLANS.

HIGHWAY STANDARDS

000001-08	STANDARD SYMBOLS, ABBREVIATIONS AND PATTERNS
001006	DECIMAL OF AN INCH AND OF A FOOT
420001-10	PAVEMENT JOINTS
482011-03	HMA SHLD. STRIPS/SHLDS. WITH RESURFACING OR WIDENING AND RESURFACING PROJECTS
642001-03	SHOULDER RUMBLE STRIPS, 16 IN.
701101-05	OFF-RD OPERATIONS, MULTILANE, 15' (4.5m) TO 24" (600mm) FROM PAVEMENT EDGE
701400-12	APPROACH TO LANE CLOSURE, FREEWAY/EXPRESSWAY
701401-13	LANE CLOSURE, FREEWAY/EXPRESSWAY
701411-09	LANE CLOSURE, MULTILANE, AT ENTRANCE OR EXIT RAMP, FOR SPEEDS > 45 MPH
701426-09	LANE CLOSURE, MULTILANE INTERMITTENT OR MOVING OPER., FOR SPEEDS > 45 MPH
701428-01	TRAFFIC CONTROL, SETUP AND REMOVAL, FREEWAY/EXPRESSWAY
701901-09	TRAFFIC CONTROL DEVICES
780001-05	TYPICAL PAVEMENT MARKINGS
781001-04	TYPICAL APPLICATIONS RAISED REFLECTIVE PAVEMENT MARKERS
442001-04	CLASS A PATCHES

DISTRICT STANDARDS (SEE SHEETS 16-21)

780000-01-D7	PAVEMENT MARKING AND RAISED REFLECTIVE PAVEMENT MARKERS (RURAL & URBAN APPLICATIONS)
780000-02-D7	TYPICAL APPLICATIONS OF INTERSTATE PAVEMENT MARKING

GENERAL NOTES

SUGGESTED SEQUENCE OF OPERATIONS:

- SET UP TRAFFIC CONTROL TO CLOSE ONE LANE.
- MILL TRAFFIC LANE AND SHOULDER.
- PLACE THE LONGITUDINAL JOINT SEALANT HALF-WIDTH AT THE CENTERLINE.
- PLACE THE SURFACE COURSE IN THE MILLED LANE AND ADJACENT SHOULDER BEFORE DOING THE SAME ON THE OTHER LANE AND SHOULDER.
- TRAFFIC SHALL NOT DRIVE ON A MILLED SURFACE.

GENERAL NOTES:

THIS PROJECT IS LOCATED ON FAI ROUTE 70 (I-70) IN FAYETTE COUNTY FROM THE VANDALLA CITY LIMITS TO THE HIGHWAY 40 INTERCHANGE. THE WORK INCLUDED CONSISTS OF HOT-MIX ASPHALT SURFACE REMOVAL, HOT-MIX ASPHALT RESURFACING, HOT-MIX ASPHALT SHOULDERS, PAVEMENT MARKING, AND ANY OTHER WORK NECESSARY TO COMPLETE THE SECTION.

WHEN APPLYING SHORT-TERM PAVEMENT MARKINGS, TEMPORARY TAPE SHALL BE USED ON THE SURFACE COURSE AND PAINT SHALL BE USED ON MILLED SURFACES.

THE FOLLOWING RATES OF APPLICATION HAVE BEEN USED IN THE CALCULATION OF PLAN QUANTITIES:

BITUMINOUS MATERIALS (TACK COAT)	0.05 LBS/SQ FT
HOT-MIX ASPHALT	0.056 TONS/SQ YD/INCH

THE LOGITUDINAL JOINT SEALANT SHALL BE APPLIED AT THE CENTERLINE OF THE MAINLINE MILLED SURFACE ONLY.

THE FOLLOWING MIXTURE REQUIREMENTS ARE APPLICABLE FOR THIS PROJECT:

THE FOLLOWING MIXTURE REQUIREMENTS ARE APPLICABLE TO THIS PROJECT:									
LOCATION(S)	MIXTURE USE(S)	PG	DESIGN AIR VOIDS	MIXTURE COMPOSITION	FRICTION AGGREGATE	MIXTURE WEIGHT	QUALITY MANAGEMENT PROGRAM	SUBLOT SIZE	MATERIAL TRANSFER DEVICE (REQUIRED?)
MAINLINE	POLYMERIZED HOT-MIX ASPHALT SURFACE COURSE, STONE MATRIX ASPHALT, IL-12.5, MK "E", N80	SBS PG 76-22	4.0% @ N=80	IL - 12.5	MIXTURE E	N80	PPP	1000	YES
SHOULDERS	HOT-MIX ASPHALT SURFACE COURSE, IL-9.5, MK "C", N70	PG 64-22	4.0% @ N=70	IL - 9.5	MIXTURE C	N70	GCQA	3000	N/A

REV. - MS

	USER NAME = abivens	DESIGNED - MJR	REVISED -	STATE OF ILLINOIS DEPARTMENT OF TRANSPORTATION	INDEX OF SHEETS, HIGHWAY STANDARDS, AND GENERAL NOTES	F.A.I. RTE.	SECTION	COUNTY	TOTAL SHEETS	SHEET NO.
	PLOT SCALE = 2.000' / in.	DRAWN - RAW	REVISED -			70	(26-3)RS-1	FAYETTE	21	2
PLOT DATE = 12/15/2023	CHECKED - ERO	REVISED -	SCALE: SHEET 1 OF 1 SHEETS STA. TO STA.			CONTRACT NO. 74981				
	DATE -	REVISED -	ILLINOIS FED. AID PROJECT							

90% FED
10% STATE

CODE NO.	ITEM	UNIT	TOTAL QUANTITY	CONSTRUCTION TYPE CODE		
				0005 RURAL		
40600290	BITUMINOUS MATERIALS (TACK COAT)	POUND	67,738			
40600372	LONGITUDINAL JOINT SEALANT, HALF WIDTH	FOOT	33,830			
40600990	TEMPORARY RAMP	SQ YD	36			
40604052	HOT-MIX ASPHALT SURFACE COURSE, IL-9.5, MIX "C", N70	TON	6,756			
40605034	POLYMERIZED HOT-MIX ASPHALT SURFACE COURSE, STONE MATRIX ASPHALT, 12.5, MIX "E", N80	TON	10,104			
44000157	HOT-MIX ASPHALT SURFACE REMOVAL, 2"	SQ YD	150,527			
44213000	PATCHING REINFORCEMENT	SQ YD	1,238			
44213200	SAW CUTS	FOOT	6,757			
48102100	AGGREGATE WEDGE SHOULDER, TYPE B	TON	643			
64200116	SHOULDER RUMBLE STRIPS, 16 INCH	FOOT	67,660			
67000400	ENGINEER'S FIELD OFFICE, TYPE A	CAL MO	2			
67100100	MOBILIZATION	L SUM	1			
70100420	TRAFFIC CONTROL AND PROTECTION, STANDARD 701411	EACH	4			
70100800	TRAFFIC CONTROL AND PROTECTION, STANDARD 701401	L SUM	1			
70107025	CHANGEABLE MESSAGE SIGN	CAL DA	28			
70300100	SHORT TERM PAVEMENT MARKING	FOOT	34,428			
70300150	SHORT TERM PAVEMENT MARKING REMOVAL	SQ FT	11,476			
* 78000400	THERMOPLASTIC PAVEMENT MARKING - LINE 6"	FOOT	67,660			
* 78004230	PREFORMED PLASTIC PAVEMENT MARKING, TYPE B - INLAID - LINE 6"	FOOT	8,458			
* 78011035	GROOVING FOR RECESSED PAVEMENT MARKING 7"	FOOT	8,458			
* 78100100	RAISED REFLECTIVE PAVEMENT MARKER	EACH	422			
78300200	RAISED REFLECTIVE PAVEMENT MARKER REMOVAL	EACH	422			
X1700081	CLASS A PATCHES, TYPE II, 16" (SPECIAL)	SQ YD	846			
X1700082	CLASS A PATCHES, TYPE IV, 16" (SPECIAL)	SQ YD	361			
X1700105	CLASS A PATCHES, TYPE III, 16" (SPECIAL)	SQ YD	32			
Z0034105	MATERIAL TRANSFER DEVICE	TON	10,104			
44213204	TIE BARS 3/4"	EACH	130			

* SPECIALTY ITEM

REV. - MS



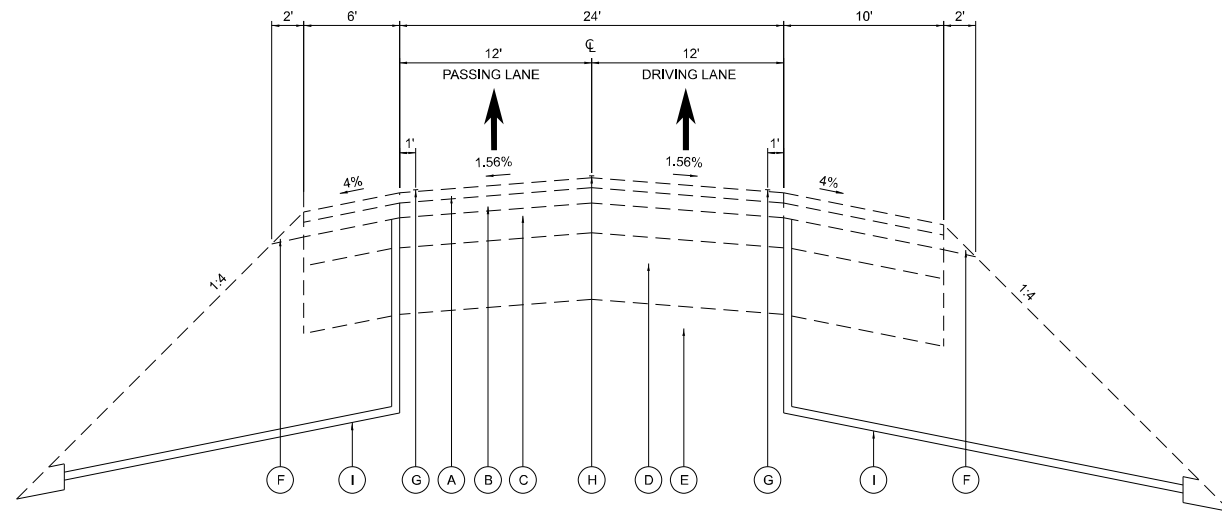
USER NAME = rwatson	DESIGNED - MJR	REVISED -
	DRAWN - RAW	REVISED -
PLOT SCALE = 2,000' / in.	CHECKED - ERO	REVISED -
PLOT DATE = 12/15/2023	DATE -	REVISED -

STATE OF ILLINOIS
DEPARTMENT OF TRANSPORTATION

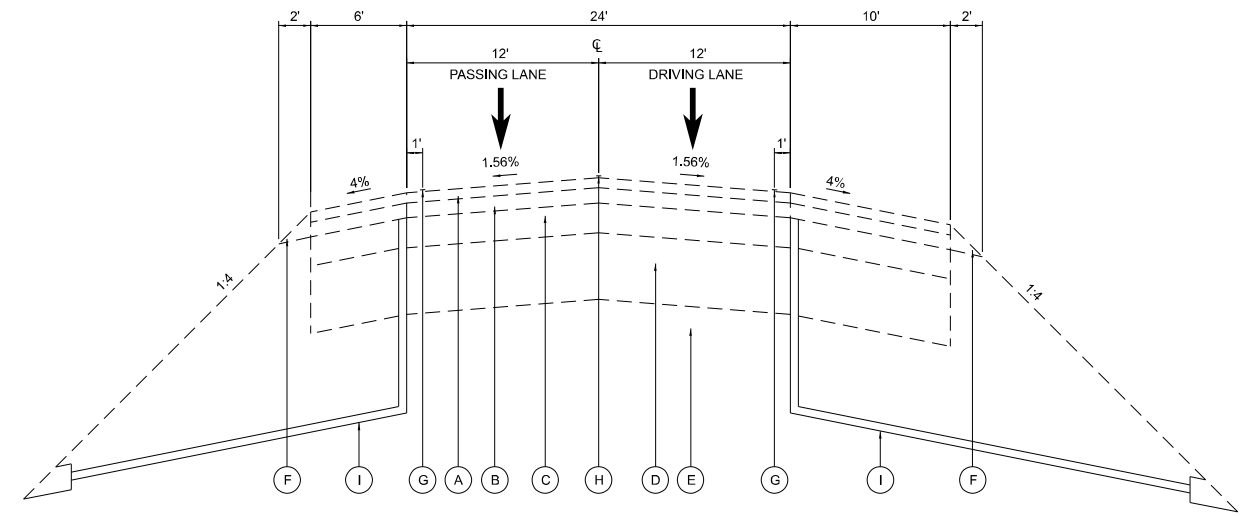
SUMMARY OF QUANTITIES

SCALE: SHEET OF SHEETS STA. TO STA.

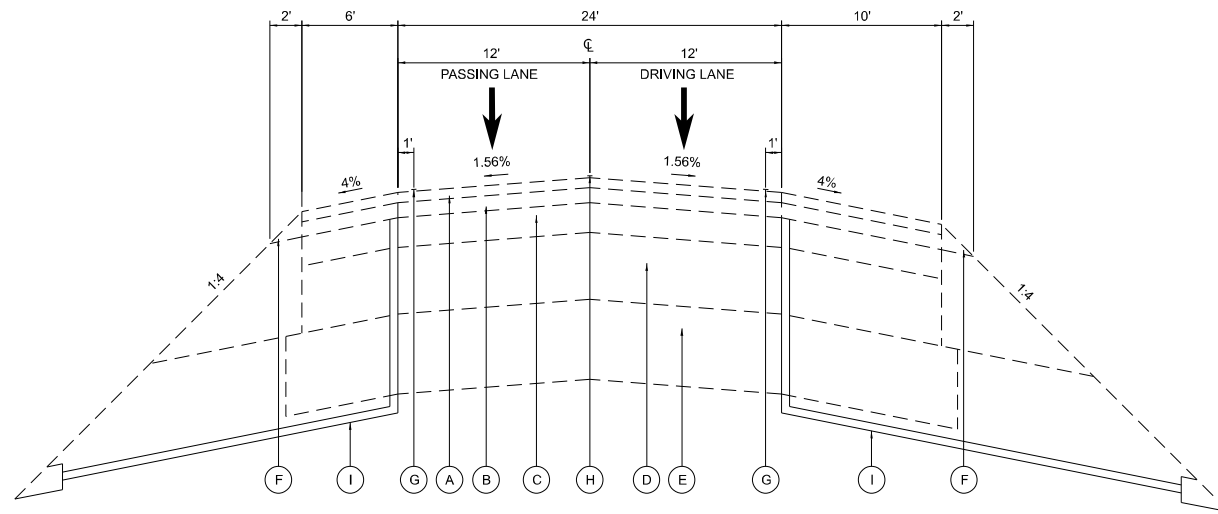
F.A.I. RTE.	SECTION	COUNTY	TOTAL SHEETS	SHEET NO.
70	(26-3)RS-1	FAYETTE	21	3
ILLINOIS FED. AID PROJECT			CONTRACT NO. 74981	



TYPICAL SECTION – FAI ROUTE 70
EASTBOUND



TYPICAL SECTION FAI ROUTE 70 – WESTBOUND
STA. 549+85.68 TO STA. 607+44



TYPICAL SECTION FAI ROUTE 70 – WESTBOUND
STA. 613+42 TO STA. 708+10
STA. 712+82 TO 721+10.10
STA. EQ. 721+10.10 BK TO 647+11.45 AH
STA. 647+11.45 TO STA. 655+62.87

EXISTING TYPICAL SECTION LEGEND

- (A) EXISTING HOT-MIX ASPHALT SURFACE COURSE (1 1/2")
- (B) EXISTING HOT-MIX ASPHALT BASE COURSE (2 1/4")
- (C) EXISTING HOT-MIX ASPHALT RESURFACING (4 1/2")
- (D) EXISTING PCC PAVEMENT 10"
- (E) EXISTING STABILIZED SUB-BASE
- (F) EXISTING AGG WEDGE SHOULDER TYPE B
- (G) EXISTING EXPOY PAVEMENT MARKING - LINE 4"
- (H) EXISTING PREFORMED PLASTIC PAVEMENT MARKING, TYPE B - LINE 6"
- (I) EXISTING PIPE UNDERDRAIN, 6"

EXISTING TYPICAL SECTIONS



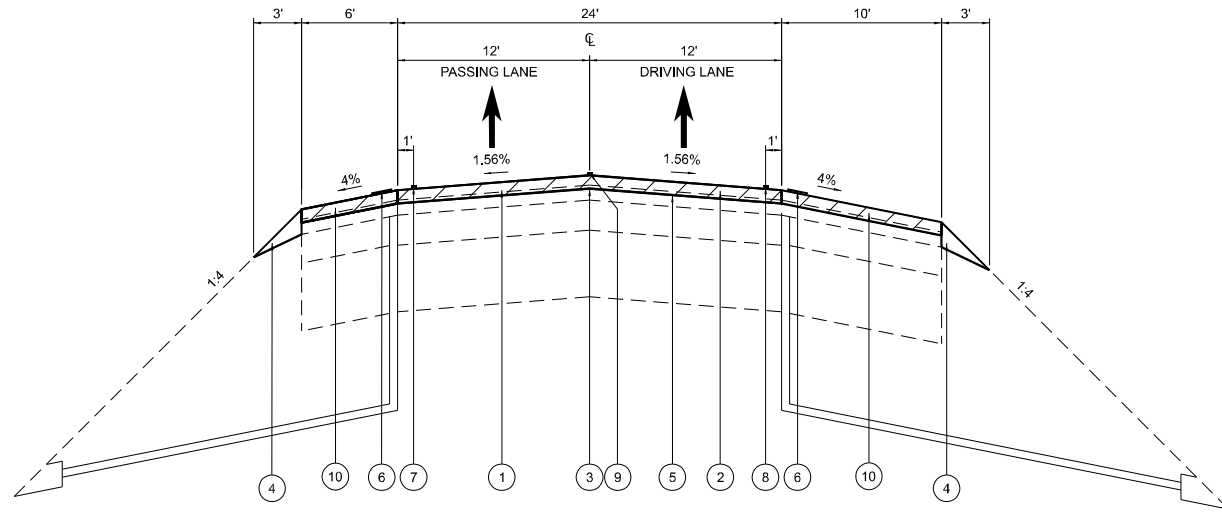
USER NAME = ablivens	DESIGNED - MJR	REVISED -
PLOT SCALE = 12,000' / in.	DRAWN - RAW	REVISED -
PLOT DATE = 12/15/2023	CHECKED - ERO	REVISED -
	DATE -	REVISED -

STATE OF ILLINOIS
DEPARTMENT OF TRANSPORTATION

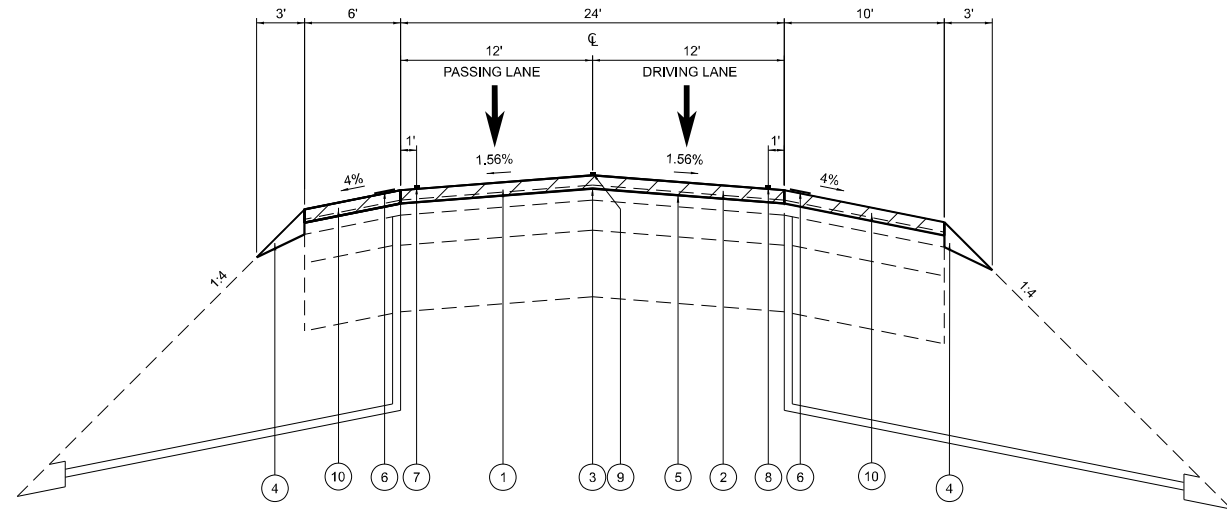
TYPICAL SECTIONS

SCALE: SHEET 1 OF 2 SHEETS STA. TO STA.

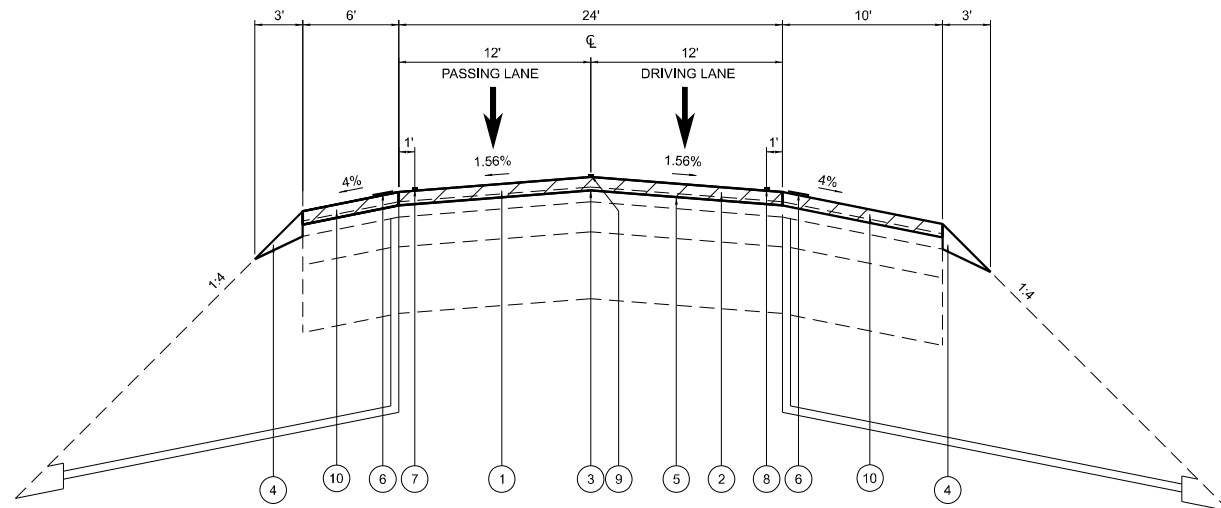
F.A.I. RTE.	SECTION	COUNTY	TOTAL SHEETS	SHEET NO.
70	(26-3)RS-1	FAYETTE	21	4
CONTRACT NO. 74981				
ILLINOIS FED. AID PROJECT				



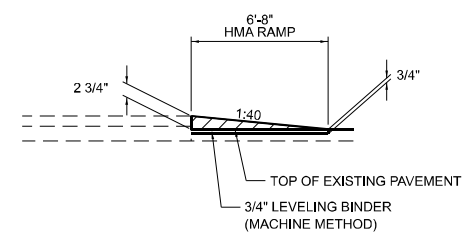
TYPICAL SECTION – FAI ROUTE 70
EASTBOUND



TYPICAL SECTION FAI ROUTE 70 – WESTBOUND
STA. 549+85.68 TO STA. 607+44



TYPICAL SECTION FAI ROUTE 70 – WESTBOUND
STA. 613+42 TO STA. 708+10
STA. 712+82 TO 721+10.10
STA. EQ. 721+10.10 BK TO 647+11.45 AH
STA. 647+11.45 TO STA. 655+62.87



TYPICAL TAPER DETAIL

PROPOSED TYPICAL SECTION LEGEND

- ① PROPOSED BITUMINOUS SURFACE REMOVAL, 2"
- ② PROPOSED POLYMERIZED HOT-MIX ASPHALT SURFACE COURSE, STONE MATRIX ASPHALT, 12.5, MIX "E", N80 (2" DEPTH)
- ③ PROPOSED LONGITUDINAL JOINT SEAL
- ④ PROPOSED AGGREGATE WEDGE SHOULDER, TYPE B
- ⑤ PROPOSED TACK COAT
- ⑥ PROPOSED RUMBLE STRIPS, 16"
- ⑦ PROPOSED THERMOPLASTIC PAVEMENT MARKING - SOLID WHITE LINE 6"
- ⑧ PROPOSED THERMOPLASTIC PAVEMENT MARKING - SOLID YELLOW LINE 6"
- ⑨ PROPOSED PREFORMED PLASTIC PAVEMENT MARKING, TYPE B - INLAID - LINE 6" - SKIP-DASH WHITE LINE
- ⑩ PROPOSED HOT-MIX ASPHALT SURFACE COURSE IL 9.5, MIX "C", N70, (2" DEPTH)

PROPOSED TYPICAL SECTIONS



USER NAME = ablivens
PLOT SCALE = 12,000' / in.
PLOT DATE = 12/15/2023

DESIGNED - MJR
DRAWN - RAW
CHECKED - ERO
DATE -

REVISED -
REVISED -
REVISED -
REVISED -

STATE OF ILLINOIS
DEPARTMENT OF TRANSPORTATION

TYPICAL SECTIONS

SCALE: SHEET 2 OF 2 SHEETS STA. TO STA.

F.A.I. RTE.	SECTION	COUNTY	TOTAL SHEETS	SHEET NO.
70	(26-3)RS-1	FAYETTE	21	5
CONTRACT NO. 74981				
ILLINOIS FED. AID PROJECT				

PAVING SCHEDULE														
STATION	TO	STATION	LENGTH FOOT	MAIN LINE WIDTH FOOT	SHOULDER WIDTH FOOT	MAIN LINE AREA SQ FT	40600290	40600370	40600990	40604052	40605034	44000157	43102100	64200116
							BITUMINOUS MATERIALS (TACK CCAT) LB	LONGITUDINAL JOINT SEALANT FOOT	TEMPORARY RAMP SQ YD	HOT-MIX ASPHALT SURFACE COURSE, IL-9.5, MIX "C", N70 TON	POLYMERIZED HOT-MIX ASPHALT SURFACE COURSE, STONE MATRIX ASPHALT, 12.5, MIX "E", N80 TON	HOT-MIX ASPHALT SURFACE REMOVAL, 2" SQ YD	AGGREGATE WEDGE SHOULDER, TYPE B TON	SHOULDER RUMBLE STRIPS, 16 INCH FOOT
I-70 WB														
549+85.68	TO	607+44.00	5758	24	16	138200	11517	5758	18	1147	1720	25593	109	11517
607+44.00	TO	613+42.00	BRIDGE OMISSION											
613+42.00	TO	708+10.00	9468	24	16	227232	18936	9468		1885	2828	42080	180	18936
708+10.00	TO	712+82.00	BRIDGE OMISSION											
712+82.00	TO	721+10.10	828	24	16	19874	1656	828		165	247	3680	16	1656
721+10.10	TO	647+11.45	STATION EQUATION BK: 721+10.10 AH: 647+11.45											
647+11.45	TO	655+62.87	851	24	16	20434	1703	851		170	254	3784	16	1703
I-70 WB TOTAL							33812	16906	18	3366	5049	75137	321	33812
I-70 EB														
549+62.60	TO	607+44.00	5781	24	16	138754	11563	5781	18	1151	1727	25695	110	11563
607+44.00	TO	613+42.00	BRIDGE OMISSION											
613+42.00	TO	708+10.00	9468	24	16	227232	18936	9468		1885	2828	42080	180	18936
708+10.00	TO	712+82.00	BRIDGE OMISSION											
712+82.00	TO	721+10.10	828	24	16	19874	1656	828		165	247	3680	16	1656
721+10.10	TO	647+11.45	STATION EQUATION BK: 721+10.10 AH: 647+11.45											
647+11.45	TO	655+57.74	846	24	16	20311	1693	846		169	253	3761	16	1693
I-70 EB TOTAL							33848	16924	18	3370	5055	75217	321	33848
CROSSOVER														
561+52.55	TO	562+20.49				1556	78			20		173		
TOTAL							67738	33830	36	6756	10104	150527	643	67660

PAVEMENT MARKING SCHEDULE														
STATION	TO	STATION	LENGTH FOOT	MAIN LINE WIDTH FOOT	SHOULDER WIDTH FOOT	MAIN LINE AREA SQ FT	70300100	70300150	78000400	78004230	78011035	78100100	78300200	
							SHORT TERM PAVEMENT MARKING FOOT	SHORT TERM PAVEMENT MARKING REMOVAL SQ FT	THERMOPLASTIC PAVEMENT MARKING - LINE 6" FOOT	PREFORMED PLASTIC PAVEMENT MARKING, TYPE B - INLAID - LINE 6" FOOT	GROOVING FOR RECESSED PAVEMENT MARKING 7" FOOT	RAISED REFLECTIVE PAVEMENT MARKER EACH	RAISED REFLECTIVE PAVEMENT MARKER REMOVAL EACH	
I-70 WB														
549+85.68	TO	607+44.00	5758	24	16	138200	5758	1919	11517	1440	1440	72	72	
607+44.00	TO	613+42.00	BRIDGE OMISSION											
613+42.00	TO	708+10.00	9468	24	16	227232	9468	3156	18936	2367	2367	118	118	
708+10.00	TO	712+82.00	BRIDGE OMISSION											
712+82.00	TO	721+10.10	828	24	16	19874	828	276	1656	207	207	10	10	
721+10.10	TO	647+11.45	STATION EQUATION BK: 721+10.10 AH: 647+11.45											
647+11.45	TO	655+62.87	851	24	16	20434	1151	384	1703	213	213	11	11	
I-70 WB TOTAL							17205	5735	33812	4227	4227	211	211	
I-70 EB														
549+62.60	TO	607+44.00	5781	24	16	138754	6081	2027	11563	1445	1445	72	72	
607+44.00	TO	613+42.00	BRIDGE OMISSION											
613+42.00	TO	708+10.00	9468	24	16	227232	9468	3156	18936	2367	2367	118	118	
708+10.00	TO	712+82.00	BRIDGE OMISSION											
712+82.00	TO	721+10.10	828	24	16	19874	828	276	1656	207	207	10	10	
721+10.10	TO	647+11.45	STATION EQUATION BK: 721+10.10 AH: 647+11.45											
647+11.45	TO	655+57.74	846	24	16	20311	846	282	1693	212	212	11	11	
I-70 EB TOTAL							17223	5741	33848	4231	4231	211	211	
TOTAL							34428	11476	67660	8458	8458	422	422	



USER NAME = r.watson
 PLOT SCALE = 2,000' / in.
 PLOT DATE = 12/15/2023

DESIGNED - MJR
 DRAWN - RAW
 CHECKED - ERO
 DATE -

REVISED -
 REVISED -
 REVISED -
 REVISED -

**STATE OF ILLINOIS
 DEPARTMENT OF TRANSPORTATION**

SCHEDULE OF QUANTITIES

SCALE: SHEET OF SHEETS STA. TO STA.

F.A.I. RTE.	SECTION	COUNTY	TOTAL SHEETS	SHEET NO.
70	(26-3)RS-1	FAYETTE	21	6
CONTRACT NO. 74981				
ILLINOIS FED. AID PROJECT				

PATCHING SCHEDULE										
STATION	LANE	LENGTH FOOT	WIDTH FOOT	AREA SQ FT	X1700081	X1700105	X170082	44213204	44213000	44213200
					CLASS A PATCHES, TYPE II, 16"	CLASS A PATCHES, TYPE III, 16"	CLASS A PATCHES, TYPE IV, 16"	TIE BARS EACH	PATCHING REINFORCEMENT SQ YD	SAW CUTS FEET
I-70 WB										
703+00.00	DRIVING	10	12	120	13.3				13.3	69.5
702+75.00	DRIVING	10	12	120	13.3				13.3	69.5
702+50.00	PASSING	6	12	72	8.0				8.0	61.5
702+00.00	PASSING	6	12	72	8.0				8.0	61.5
682+45.00	DRIVING	180	12	2160			240.0	89.0	240.0	409.5
680+75.00	PASSING	6	12	72	8.0				8.0	61.5
680+00.00	DRIVING	6	12	72	8.0				8.0	61.5
675+70.00	PASSING	20	12	240			26.7	9.0	26.7	89.5
673+60.00	PASSING	6	12	72	8.0				8.0	61.5
617+25.00	DRIVING	10	12	120	13.3				13.3	69.5
615+90.00	DRIVING	10	12	120	13.3				13.3	69.5
607+44 TO 613.42 BRIDGE OMISSION										
603+00.00	PASSING	12	12	144		16.0			16.0	73.5
602+50.00	DRIVING	6	12	72	8.0				8.0	61.5
582+30.00	DRIVING	10	12	120	13.3				13.3	69.5
566+50.00	DRIVING	20	12	240			26.7	9.0	26.7	89.5
562+00.00	DRIVING	30	12	360			40.0	14.0	40.0	109.5
560+25.00	DRIVING	6	12	72	8.0				8.0	61.5
556+40.00	DRIVING	12	12	144		16.0			16.0	73.5
549+85.00	DRIVING	6	12	72	8.0				8.0	61.5
549+85.00	PASSING	6	12	72	8.0				8.0	61.5
549+50.00	DRIVING	6	12	72	8.0				8.0	61.5
549+50.00	PASSING	6	12	72	8.0				8.0	61.5
I-70 WB TOTAL					154.5	32.0	333.4	121.0	519.9	1869.0
I-70 EB										
560+85.00	DRIVING	6	12	72	8.0				8.0	61.5
566+10.00	DRIVING	6	12	72	8.0				8.0	61.5
566+10.00	PASSING	6	12	72	8.0				8.0	61.5
568+15.00	DRIVING	6	12	72	8.0				8.0	61.5
570+15.00	PASSING	6	12	72	8.0				8.0	61.5
571+20.00	DRIVING	6	12	72	8.0				8.0	61.5
580+30.00	DRIVING	10	12	120	13.3				13.3	69.5
580+30.00	PASSING	6	12	72	8.0				8.0	61.5
581+25.00	DRIVING	8	12	96	10.7				10.7	65.5
581+25.00	PASSING	8	12	96	10.7				10.7	65.5
583+15.00	PASSING	8	12	96	10.7				10.7	65.5
584+30.00	DRIVING	8	12	96	10.7				10.7	65.5
585+25.00	DRIVING	6	12	72	8.0				8.0	61.5
587+15.00	DRIVING	6	12	72	8.0				8.0	61.5
588+15.00	DRIVING	6	12	72	8.0				8.0	61.5
593+15.00	DRIVING	6	12	72	8.0				8.0	61.5
593+15.00	PASSING	6	12	72	8.0				8.0	61.5
594+15.00	PASSING	6	12	72	8.0				8.0	61.5
595+15.00	PASSING	10	12	120	13.3				13.3	69.5
604+25.00	DRIVING	10	12	120	13.3				13.3	69.5
604+25.00	PASSING	10	12	120	13.3				13.3	69.5
605+15.00	DRIVING	8	12	96	10.7				10.7	65.5
605+15.00	PASSING	8	12	96	10.7				10.7	65.5
607+44 TO 613.42 BRIDGE OMISSION										
616+15.00	PASSING	6	12	72	8.0				8.0	61.5
618+15.00	PASSING	6	12	72	8.0				8.0	61.5
619+20.00	DRIVING	6	12	72	8.0				8.0	61.5
619+20.00	PASSING	6	12	72	8.0				8.0	61.5
626+30.00	DRIVING	6	12	72	8.0				8.0	61.5
626+30.00	PASSING	6	12	72	8.0				8.0	61.5
627+30.00	DRIVING	6	12	72	8.0				8.0	61.5
627+30.00	PASSING	6	12	72	8.0				8.0	61.5
629+30.00	DRIVING	8	12	96	10.7				10.7	65.5
630+20.00	DRIVING	6	12	72	8.0				8.0	61.5
630+20.00	PASSING	6	12	72	8.0				8.0	61.5
639+10.00	DRIVING	10	12	120	13.3				13.3	69.5
639+10.00	PASSING	10	12	120	13.3				13.3	69.5
640+10.00	DRIVING	6	12	72	8.0				8.0	61.5
640+10.00	PASSING	6	12	72	8.0				8.0	61.5
641+15.00	DRIVING	8	12	96	10.7				10.7	65.5
641+15.00	PASSING	8	12	96	10.7				10.7	65.5
649+00.00	DRIVING	6	12	72	8.0				8.0	61.5
649+00.00	PASSING	6	12	72	8.0				8.0	61.5
650+05.00	DRIVING	6	12	72	8.0				8.0	61.5
650+05.00	PASSING	6	12	72	8.0				8.0	61.5
652+00.00	DRIVING	8	12	96	10.7				10.7	65.5
653+00.00	DRIVING	6	12	72	8.0				8.0	61.5
653+00.00	PASSING	6	12	72	8.0				8.0	61.5
655+00.00	DRIVING	6	12	72	8.0				8.0	61.5
655+00.00	PASSING	6	12	72	8.0				8.0	61.5
663+05.00	DRIVING	8	12	96	10.7				10.7	65.5
663+05.00	PASSING	8	12	96	10.7				10.7	65.5
664+20.00	PASSING	6	12	72	8.0				8.0	61.5
665+10.00	PASSING	8	12	96	10.7				10.7	65.5

PATCHING SCHEDULE										
STATION	LANE	LENGTH FOOT	WIDTH FOOT	AREA SQ FT	X1700081	X1700105	X170082	44213204	44213000	44213200
					CLASS A PATCHES, TYPE II, 16"	CLASS A PATCHES, TYPE III, 16"	CLASS A PATCHES, TYPE IV, 16"	TIE BARS EACH	PATCHING REINFORCEMENT SQ YD	SAW CUTS FEET
I-70 WB										
667+10.00	PASSING	6	12	72	8.0				8.0	61.5
674+05.00	DRIVING	6	12	72	8.0				8.0	61.5
674+05.00	PASSING	6	12	72	8.0				8.0	61.5
675+05.00	PASSING	6	12	72	8.0				8.0	61.5
676+10.00	DRIVING	6	12	72	8.0				8.0	61.5
676+10.00	PASSING	6	12	72	8.0				8.0	61.5
677+10.00	PASSING	6	12	72	8.0				8.0	61.5
679+00.00	DRIVING	20	12	240				26.7	9.0	89.5
680+25.00	DRIVING	6	12	72	8.0				8.0	61.5
685+20.00	DRIVING	6	12	72	8.0				8.0	61.5
685+20.00	PASSING	6	12	72	8.0				8.0	61.5
686+20.00	DRIVING	8	12	96	10.7				10.7	65.5
686+20.00	PASSING	8	12	96	10.7				10.7	65.5
689+25.00	DRIVING	6	12	72	8.0				8.0	61.5
689+25.00	PASSING	6	12	72	8.0				8.0	61.5
690+00.00	DRIVING	6	12	72	8.0				8.0	61.5
690+00.00	PASSING	6	12	72	8.0				8.0	61.5
708+10 TO 712+82 BRIDGE OMISSION										
712+90.00	DRIVING	8	12	96	10.7				10.7	65.5
712+90.00	PASSING	8	12	96	10.7				10.7	65.5
715+90.00	DRIVING	6	12	72	8.0				8.0	61.5
716+00.00	DRIVING	6	12	72	8.0				8.0	61.5
STATION EQUATION BK: 721+10.10 AH: 647+11.45										
648+50.00	DRIVING	8	12	96	10.7				10.7	65.5
648+50.00	PASSING	8	12	96	10.7				10.7	65.5
I-70 EB TOTAL					691.1	0.0	26.7	9.0	717.8	4887.5
TOTAL					846	32	361	130	1238	6757

REV. - MS



USER NAME = rwatson
 PLOT SCALE = 2.000' / in.
 PLOT DATE = 12/15/2023

DESIGNED - MJR
 DRAWN - RAW
 CHECKED - ERO
 DATE -

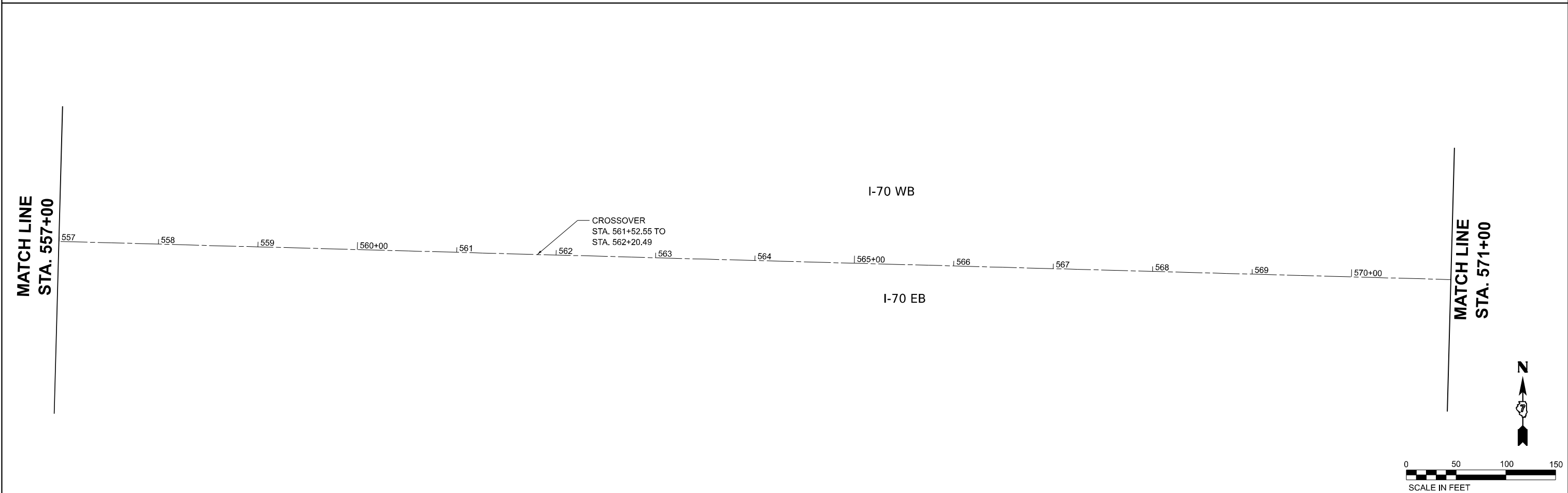
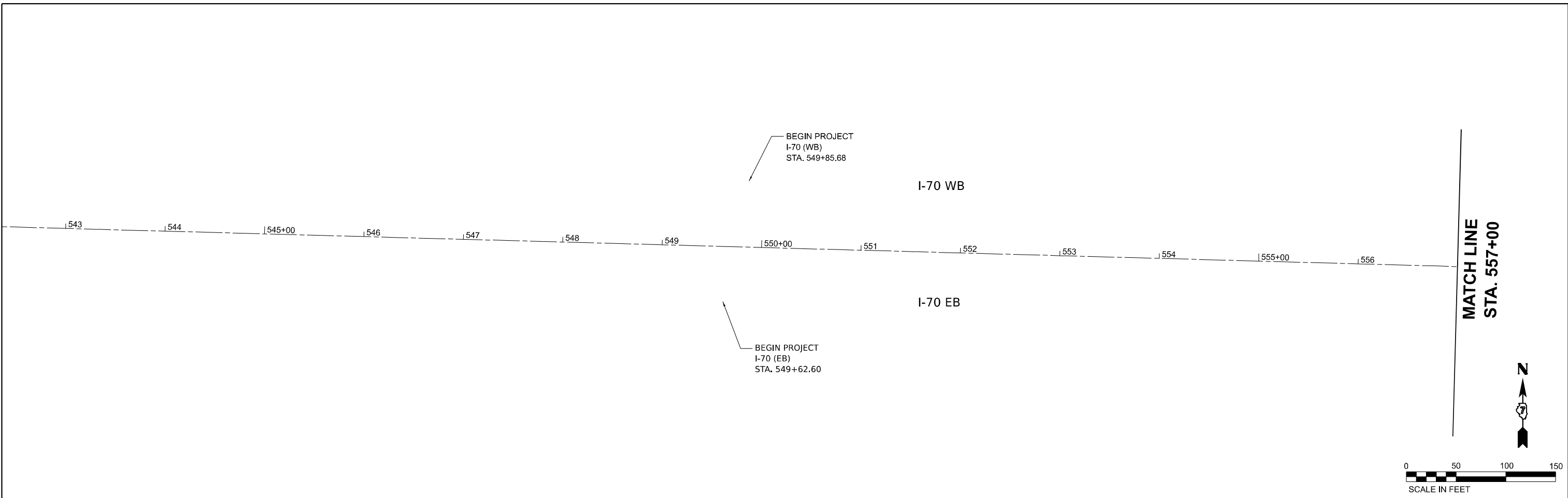
REVISED -
 REVISED -
 REVISED -
 REVISED -

STATE OF ILLINOIS
 DEPARTMENT OF TRANSPORTATION

SCHEDULE OF QUANTITIES

SCALE: SHEET OF SHEETS STA. TO STA.

F.A.I. RTE.	SECTION	COUNTY	TOTAL SHEETS	SHEET NO.
70	(26-3)RS-1	FAYETTE	21	7
CONTRACT NO. 74981				
ILLINOIS FED. AID PROJECT				



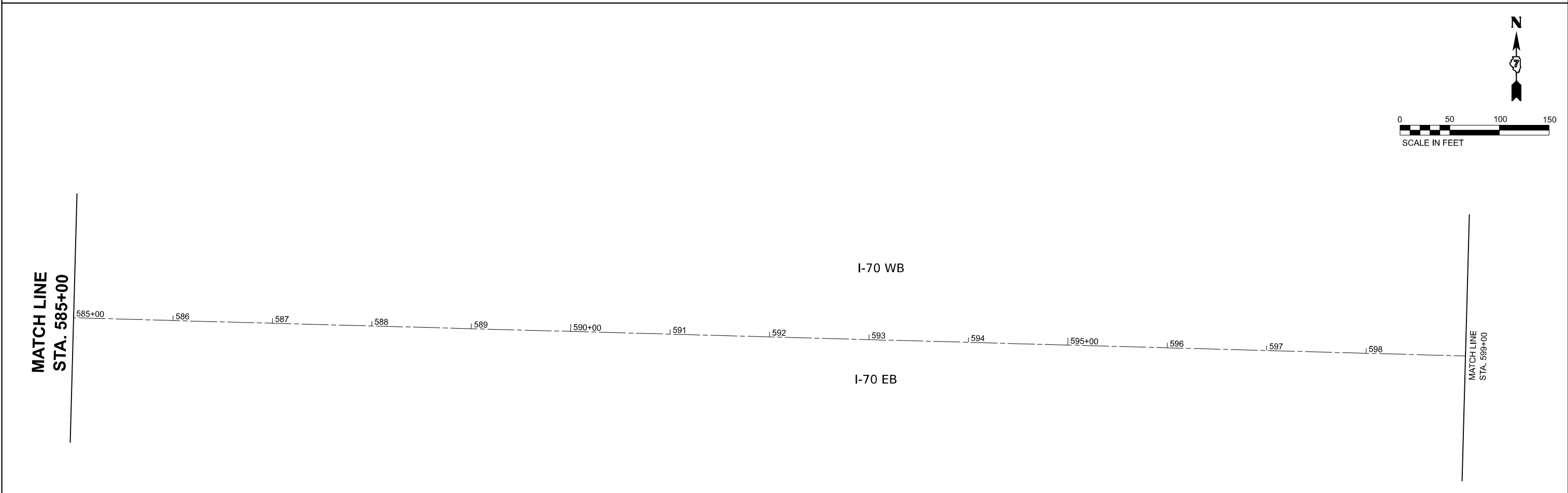
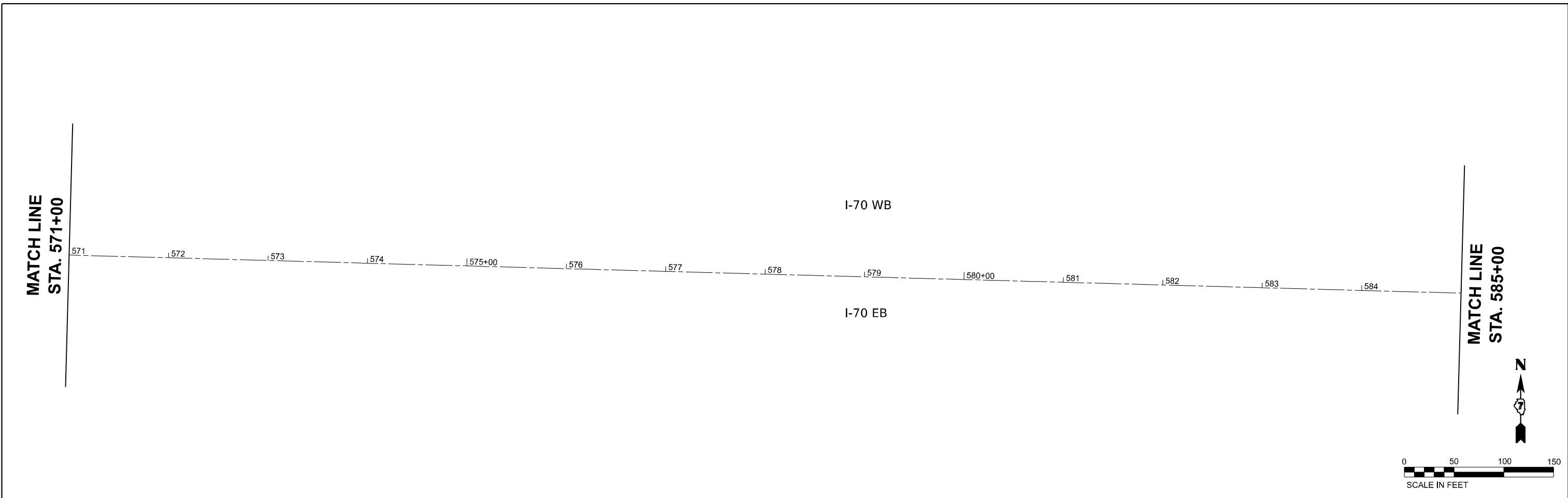
USER NAME = ablivens	DESIGNED - MJR	REVISED -
DRAWN - RAW	REVISED -	
PLOT SCALE = 100,000' / in.	CHECKED - ERO	REVISED -
PLOT DATE = 12/15/2023	DATE -	REVISED -

**STATE OF ILLINOIS
DEPARTMENT OF TRANSPORTATION**

PLAN SHEET

SCALE: 1"=50' SHEET 1 OF 7 SHEETS STA. 549+00 TO STA. 571+00

F.A.I. RTE.	SECTION	COUNTY	TOTAL SHEETS	SHEET NO.
70	(26-3)RS-1	FAYETTE	21	8
CONTRACT NO. 74981				
ILLINOIS FED. AID PROJECT				



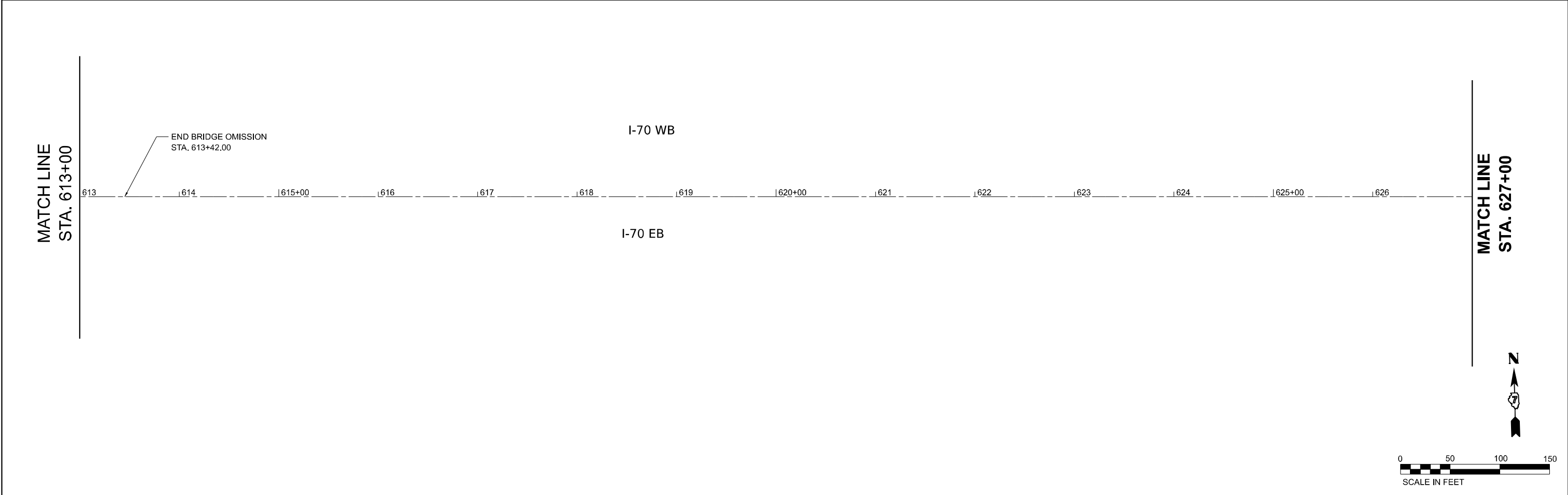
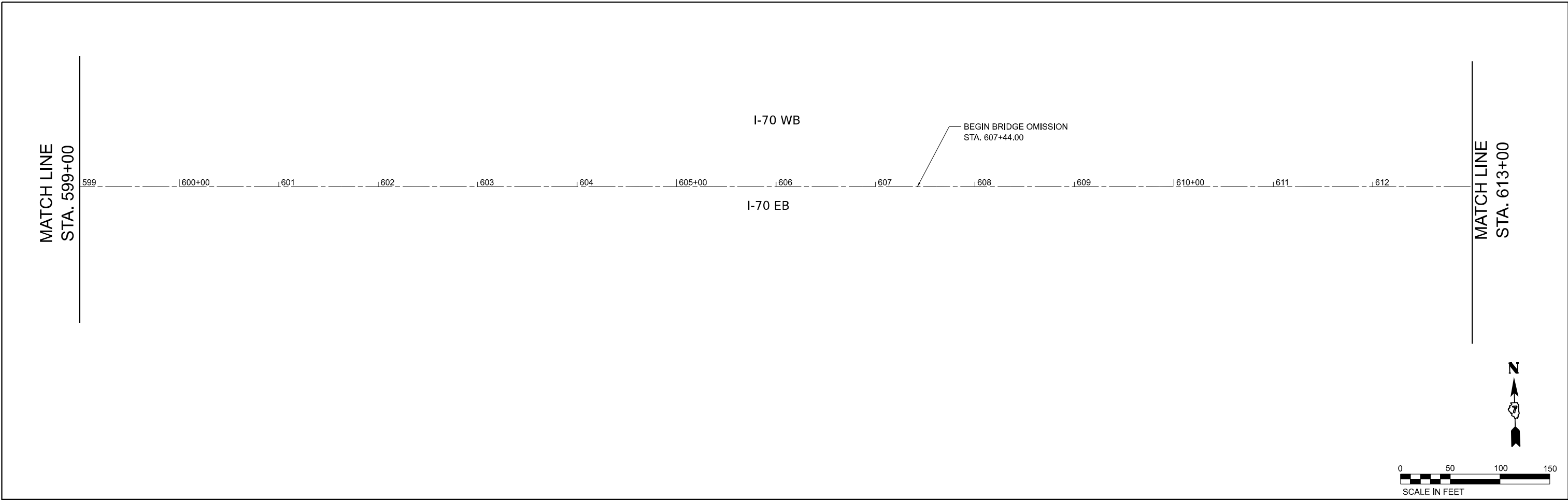
USER NAME = ablvns	DESIGNED - MJR	REVISED -
DRAWN - RAW	REVISED -	
PLOT SCALE = 100,000' / in.	CHECKED - ERO	REVISED -
PLOT DATE = 12/15/2023	DATE -	REVISED -

**STATE OF ILLINOIS
DEPARTMENT OF TRANSPORTATION**

PLAN SHEET

SCALE: 1"=50' SHEET 2 OF 7 SHEETS STA. 571+00 TO STA. 599+00

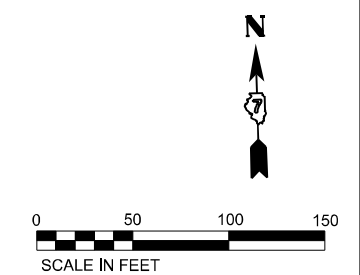
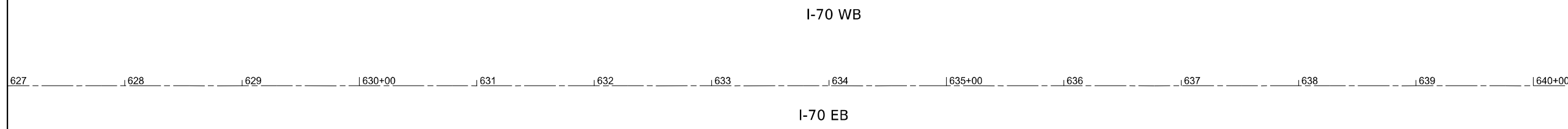
F.A.I. RTE.	SECTION	COUNTY	TOTAL SHEETS	SHEET NO.
70	(26-3)RS-1	FAYETTE	21	9
CONTRACT NO. 74981				
ILLINOIS FED. AID PROJECT				



	USER NAME = ablivens	DESIGNED - MJR	REVISED -	STATE OF ILLINOIS DEPARTMENT OF TRANSPORTATION	PLAN SHEET			F.A.I. RTE.	SECTION	COUNTY	TOTAL SHEETS	SHEET NO.
	PLOT SCALE = 100,000' / in.	DRAWN - RAW	REVISED -		70	(26-3)RS-1	FAYETTE	21	10			
PLOT DATE = 12/15/2023	CHECKED - ERO	REVISED -	CONTRACT NO. 74981				ILLINOIS FED. AID PROJECT					
	DATE -	REVISED -	SCALE: 1"=50'		SHEET 3	OF 7 SHEETS	STA. 599+00	TO STA. 627+00				

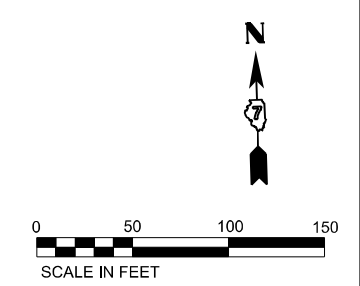
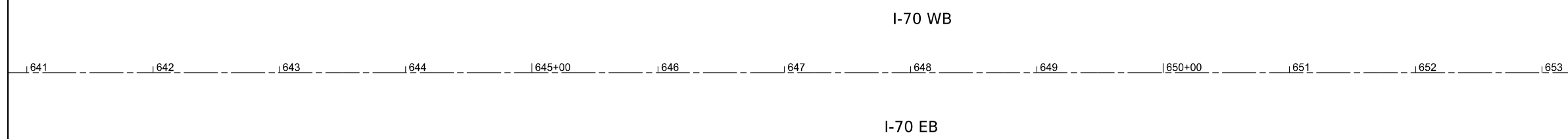
MATCH LINE
STA. 627+00

MATCH LINE
STA. 641+00



MATCH LINE
STA. 641+00

MATCH LINE
STA. 654+00



USER NAME = ablivens	DESIGNED - MJR	REVISED -
	DRAWN - RAW	REVISED -
PLOT SCALE = 100,000' / in.	CHECKED - ERO	REVISED -
PLOT DATE = 12/15/2023	DATE -	REVISED -

STATE OF ILLINOIS
DEPARTMENT OF TRANSPORTATION

PLAN SHEET

SCALE: 1"=50' SHEET 4 OF 7 SHEETS STA. 627+00 TO STA. 654+00

F.A.I. RTE.	SECTION	COUNTY	TOTAL SHEETS	SHEET NO.
70	(26-3)RS-1	FAYETTE	21	11
CONTRACT NO. 74981				
ILLINOIS FED. AID PROJECT				

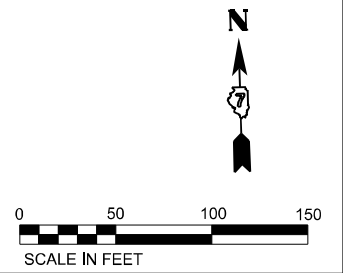
MATCH LINE
STA. 654+00

654 | 655+00 | 656 | 657 | 658 | 659 | 660+00 | 661 | 662 | 663 | 664 | 665+00 | 666 | 667

I-70 WB

I-70 EB

MATCH LINE
STA. 668+00



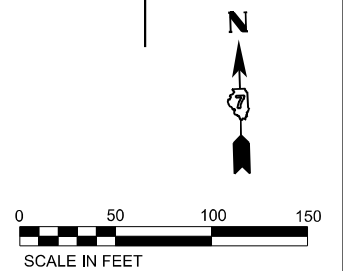
MATCH LINE
STA. 668+00

668 | 669 | 670+00 | 671 | 672 | 673 | 674 | 675+00 | 676 | 677 | 678 | 679 | 680+00 | 681

I-70 WB

I-70 EB

MATCH LINE
STA. 682+00



USER NAME = ablivens	DESIGNED - MJR	REVISED -
	DRAWN - RAW	REVISED -
PLOT SCALE = 100,000' / in.	CHECKED - ERO	REVISED -
PLOT DATE = 12/15/2023	DATE -	REVISED -

STATE OF ILLINOIS
DEPARTMENT OF TRANSPORTATION

PLAN SHEET

SCALE: 1"=50' SHEET 5 OF 7 SHEETS STA. 654+00 TO STA. 682+00

F.A.I. RTE.	SECTION	COUNTY	TOTAL SHEETS	SHEET NO.
70	(26-3)RS-1	FAYETTE	21	12
CONTRACT NO. 74981				
ILLINOIS FED. AID PROJECT				

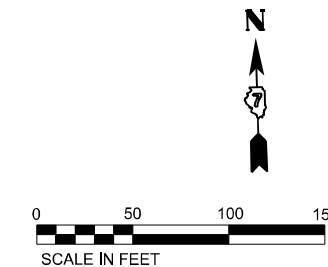
MATCH LINE
STA. 682+00

682 683 684 685+00 686 687 688 689 690+00 691 692 693 694 695+00

I-70 WB

I-70 EB

MATCH LINE
STA. 696+00



MATCH LINE
STA. 696+00

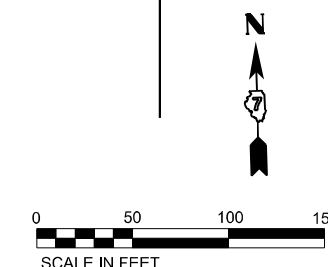
696 697 698 699 700+00 701 702 703 704 705+00 706 707 708 709

I-70 WB

I-70 EB

BEGIN BRIDGE OMISSION
STA. 708+10.00

MATCH LINE
STA. 710+00



USER NAME = ablivens	DESIGNED - MJR	REVISED -
	DRAWN - RAW	REVISED -
PLOT SCALE = 100,000' / in.	CHECKED - ERO	REVISED -
PLOT DATE = 12/15/2023	DATE -	REVISED -

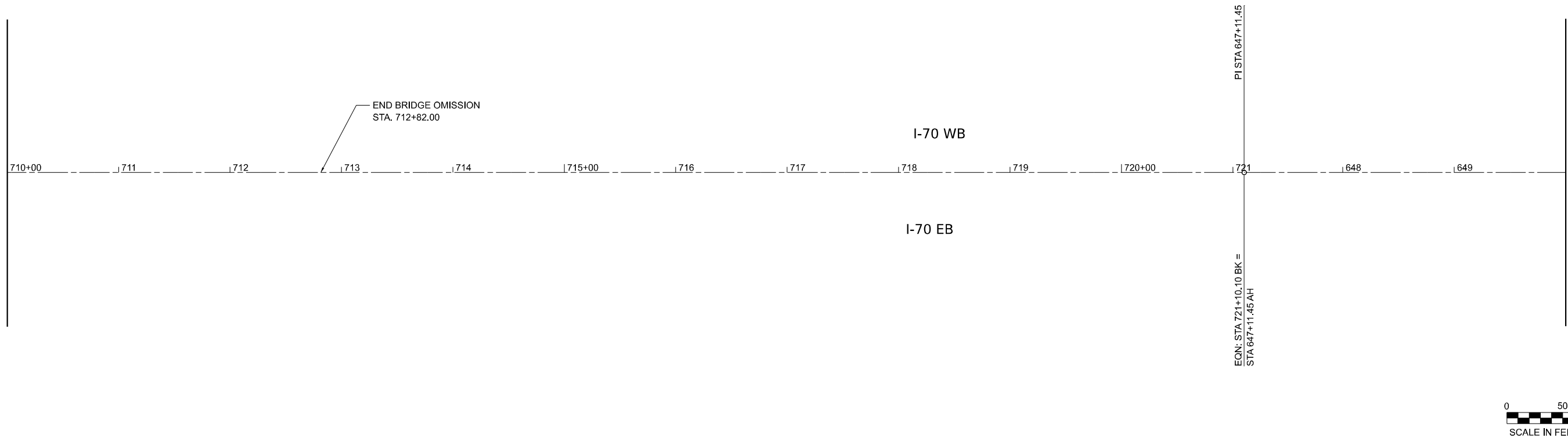
STATE OF ILLINOIS
DEPARTMENT OF TRANSPORTATION

PLAN SHEET

SCALE: 1"=50' SHEET 6 OF 7 SHEETS STA. 682+00 TO STA. 710+00

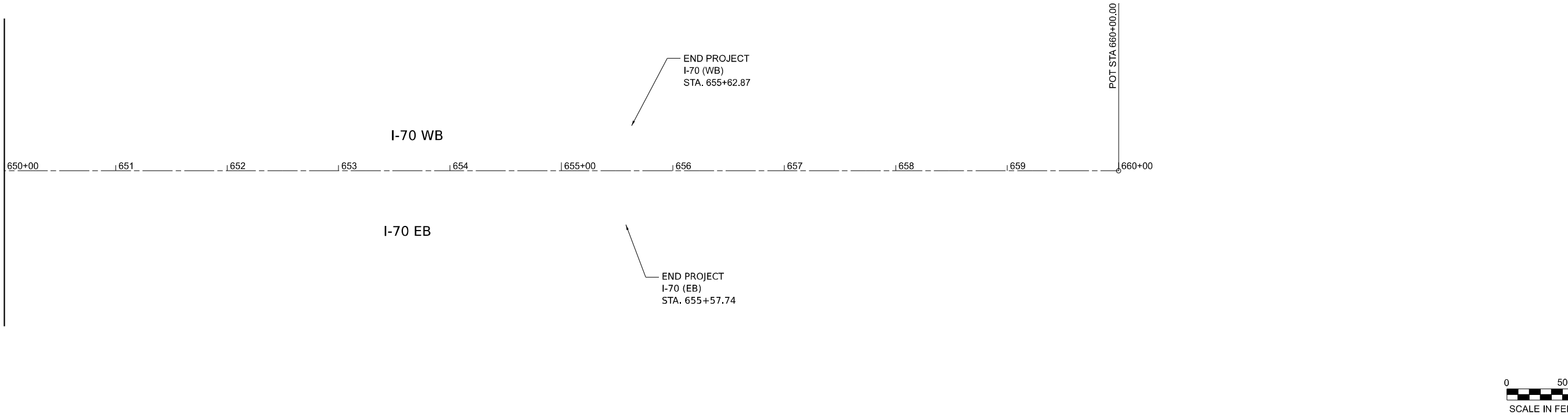
F.A.I. RTE.	SECTION	COUNTY	TOTAL SHEETS	SHEET NO.
70	(26-3)RS-1	FAYETTE	21	13
CONTRACT NO. 74981				
ILLINOIS FED. AID PROJECT				

MATCH LINE
STA. 710+00



MATCH LINE
STA. 650+00

MATCH LINE
STA. 650+00



MATCH LINE
STA. 660+00

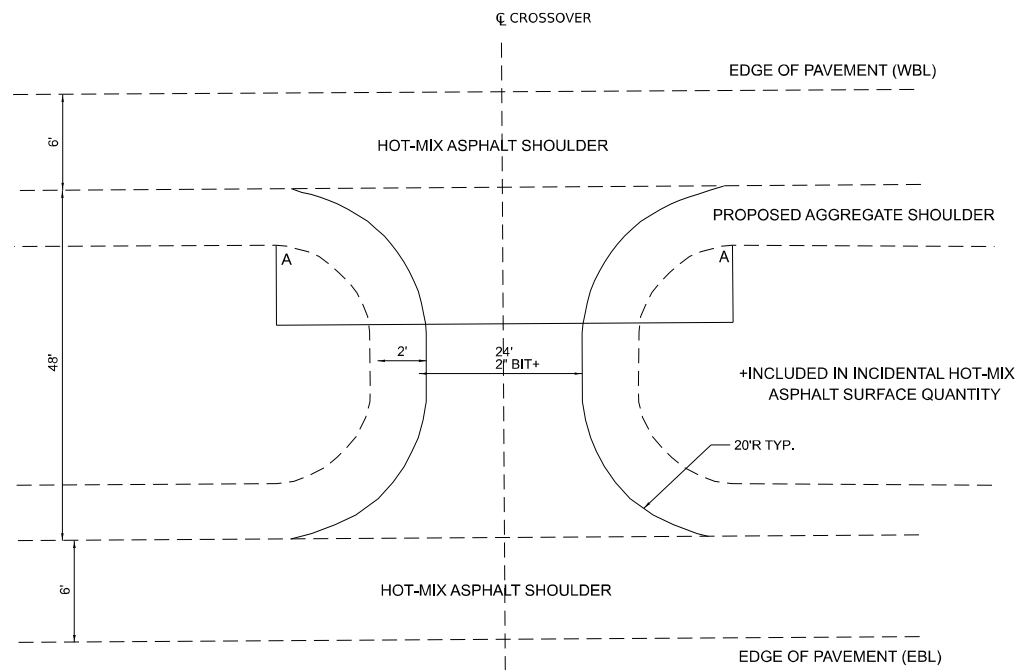


USER NAME = ablivens	DESIGNED - MJR	REVISED -
	DRAWN - RAW	REVISED -
PLOT SCALE = 100,000' / in.	CHECKED - ERO	REVISED -
PLOT DATE = 12/15/2023	DATE -	REVISED -

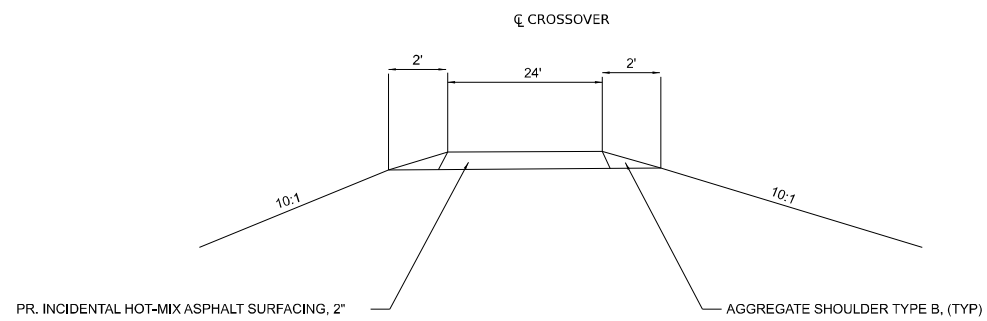
STATE OF ILLINOIS
DEPARTMENT OF TRANSPORTATION

PLAN SHEET
SCALE: 1"=50' SHEET 7 OF 7 SHEETS STA. 710+00 TO STA. 660+00

F.A.I. RTE.	SECTION	COUNTY	TOTAL SHEETS	SHEET NO.
70	(26-3)RS-1	FAYETTE	21	14
CONTRACT NO. 74981				
ILLINOIS FED. AID PROJECT				



DETAIL OF MEDIAN CROSSOVER
 STA. 561+52.55 TO STA. 562+20.49



SECTION A-A
 STA. 561+52.55 TO STA. 562+20.49



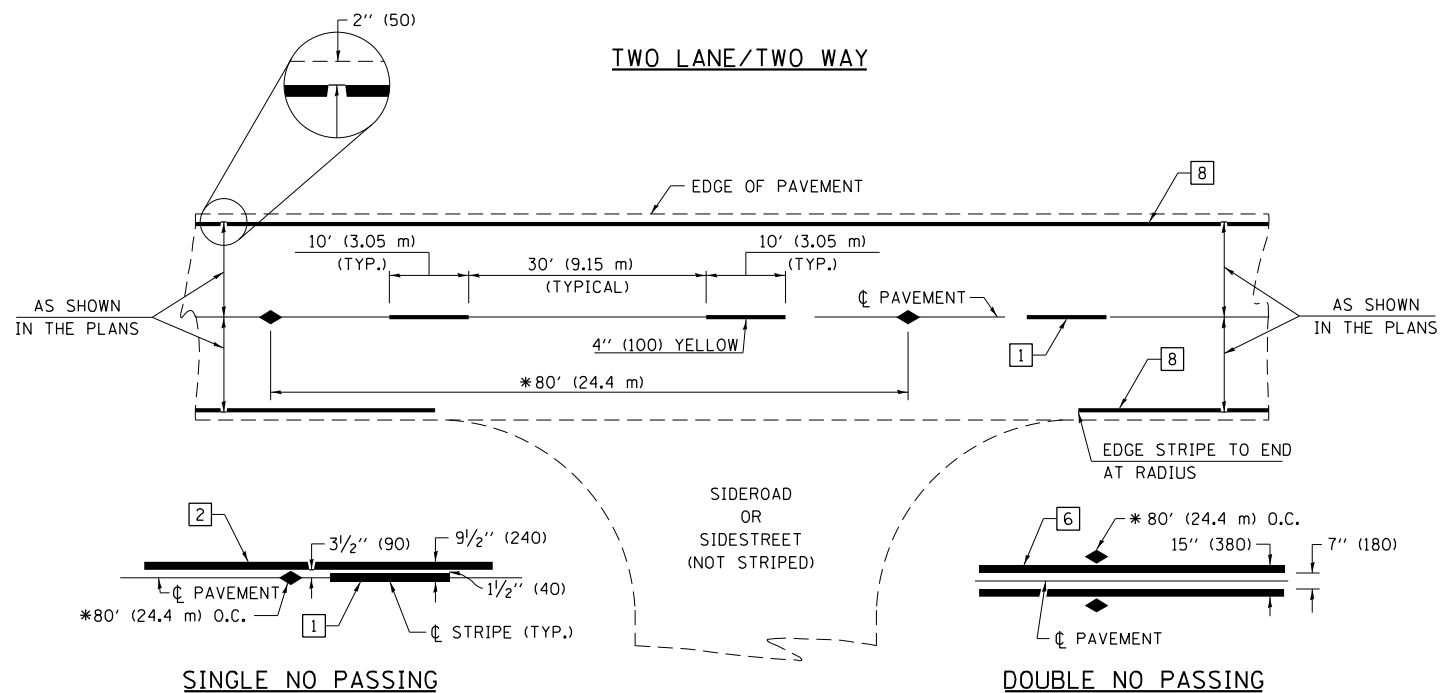
USER NAME = abovens	DESIGNED - MJR	REVISED -
PLOT SCALE = 1/2,000" = 1/16"	DRAWN - RAW	REVISED -
PLOT DATE = 12/15/2023	CHECKED - ERO	REVISED -
	DATE -	REVISED -

**STATE OF ILLINOIS
 DEPARTMENT OF TRANSPORTATION**

MISCELLANEOUS DETAILS

SCALE: SHEET 1 OF 1 SHEETS STA. TO STA.

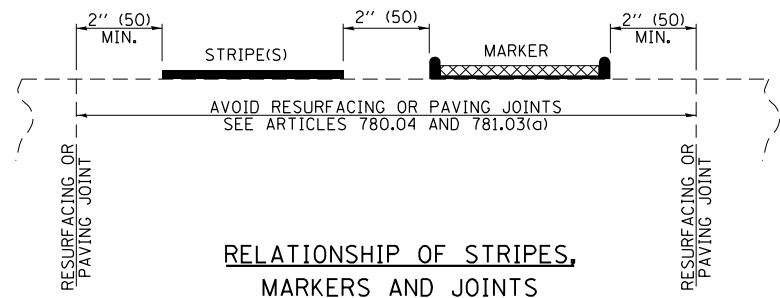
F.A.I. RTE.	SECTION	COUNTY	TOTAL SHEETS	SHEET NO.
70	(26-3)RS-1	FAYETTE	21	15
CONTRACT NO. 74981				
ILLINOIS FED. AID PROJECT				



* REDUCE TO 40' (12.2 m) O.C. ON CURVES WITH POSTED OR ADVISORY SPEEDS OF 45 mph (70 km/h) OR LESS.

PAVEMENT MARKING LEGEND

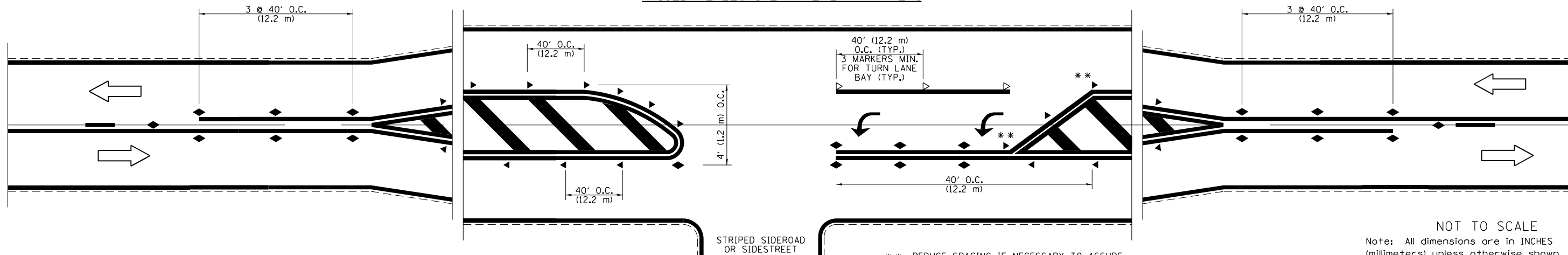
- 1 4" (100) SKIP-DASH (YELLOW)
- 2 4" (100) SOLID (YELLOW)
- 3 12" (300) DIAGONAL (YELLOW)
- 4 4" (100) DOUBLE YELLOW (NARROW)
- 5 12" (300) SOLID WHITE
- 6 4" (100) DOUBLE YELLOW (WIDE)
- 7 6" (150) SKIP-DASH (WHITE)
- 8 4" (100) SOLID (WHITE)
- 9 12" (300) DIAGONAL (WHITE)
- 10 6" (150) SOLID (WHITE)
- 11 24" (600) STOP BAR (WHITE)
- 12 8" (200) SOLID (WHITE)
- 13 4" (100) PARKING WHITE



TYPICAL PAVEMENT MARKERS LEGEND

- ◆ TWO-WAY AMBER MARKER
- ▶ ONE-WAY AMBER MARKER
- ▷ ONE-WAY CRYSTAL MARKER

RAISED REFLECTIVE PAVEMENT MARKERS



** REDUCE SPACING IF NECESSARY TO ASSURE MARKERS AT CORNER POINTS.

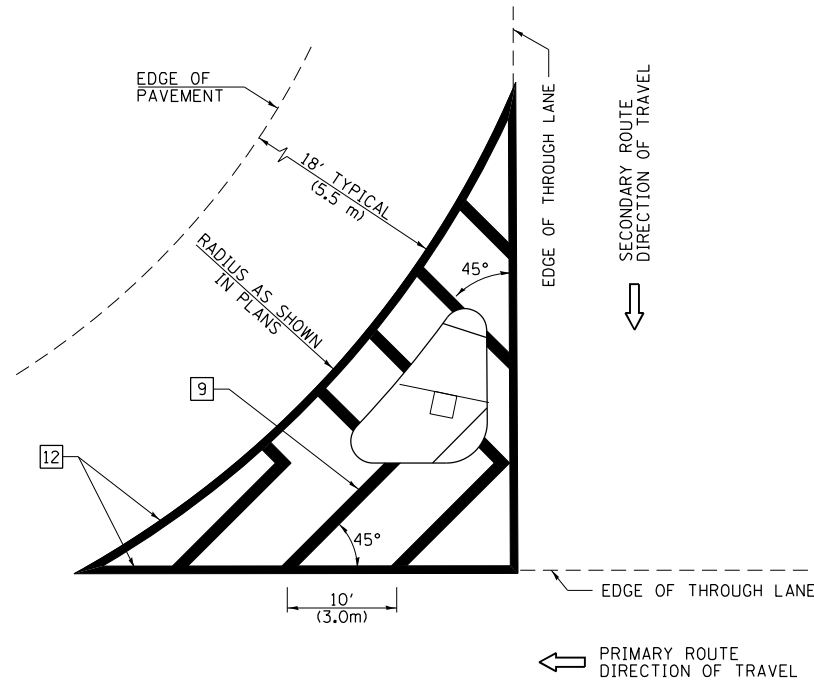
NOT TO SCALE
Note: All dimensions are in INCHES (millimeters) unless otherwise shown.

DISTRICT 7 DETAIL NO. 7800001

FILE NAME =	USER NAME = dbuescher	DESIGNED -	REVISED - NAS 06/22	STATE OF ILLINOIS DEPARTMENT OF TRANSPORTATION	PAVEMENT MARKING AND RAISED REFLECTIVE PAVEMENT MARKERS (RURAL & URBAN APPLICATIONS)	F.A. RTE.	SECTION	COUNTY	TOTAL SHEETS	SHEET NO.	
P:\2023\ME23028.05 PTB 203-037 WD 5 -	70 SMART Resurfacing\01-CADD\Phase 2\02-Striping\DRW\001.dgn	CHECKED -	REVISED -							21	16
		DATE -	REVISED -			CONTRACT NO.		ILLINOIS FED. AID PROJECT			
						SCALE:	SHEET NO. 1 OF 4 SHEETS	STA.	TO STA.		

ISLANDS

OPTION 1

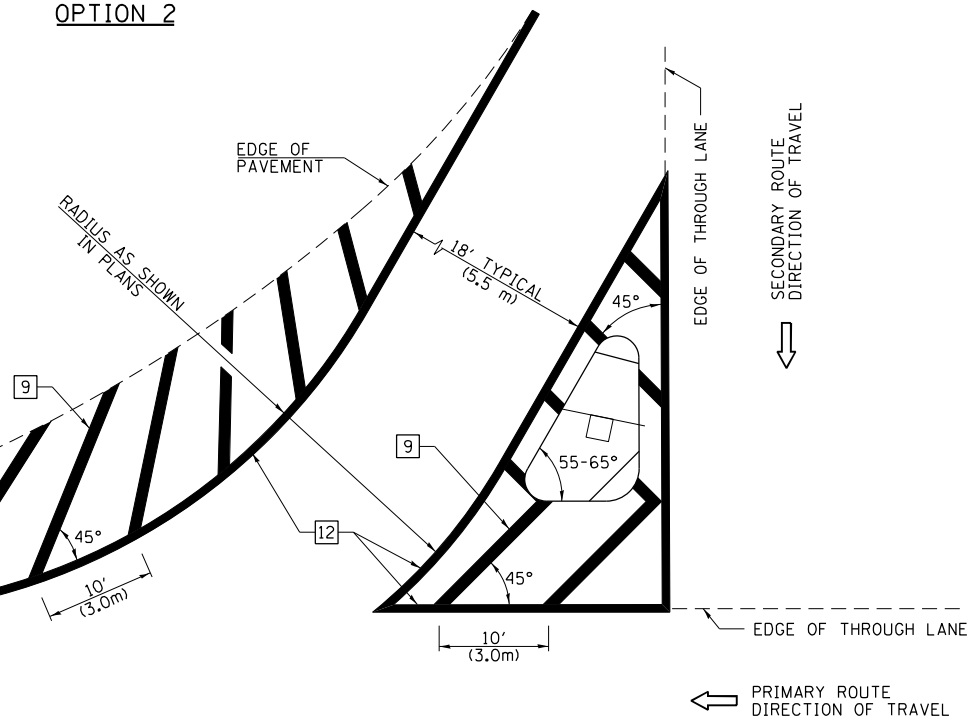


GENERAL NOTES

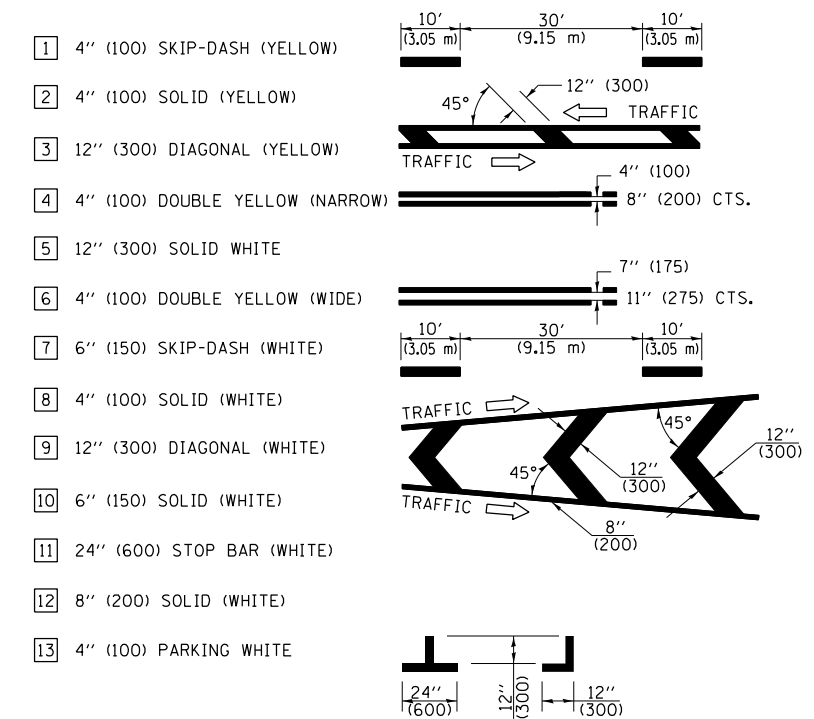
1. RAISED AND CORRUGATED MEDIANS SHALL BE OUTLINED WITH [2].
2. SOME OF THE INFORMATION INCLUDED WITH THIS DETAIL MAY NOT BE APPLICABLE TO THIS IMPROVEMENT.
3. PAVEMENT MARKINGS ARE TO BE EXTENDED THROUGH OMISSIONS WHEN APPLICABLE.
4. FINAL PAVEMENT MARKINGS SHALL BE IN PLACE PRIOR TO PLACING ANY RAISED REFLECTIVE PAVEMENT MARKERS.
5. THE FOLLOWING CRITERIA SHALL BE USED FOR SELECTING THE DIAGONAL PAVEMENT MARKING SPACING:

< 30 MPH (< 50 km/h)	15' (4.5 m)
30-45 MPH (50-75 km/h)	20' (6.0 m)
> 45 MPH (> 75 km/h)	30' (9.0 m)
6. THE USE OF ISLAND STRIPING OPTION 1 OR OPTION 2 SHALL BE AS SHOWN ON THE PLANS.

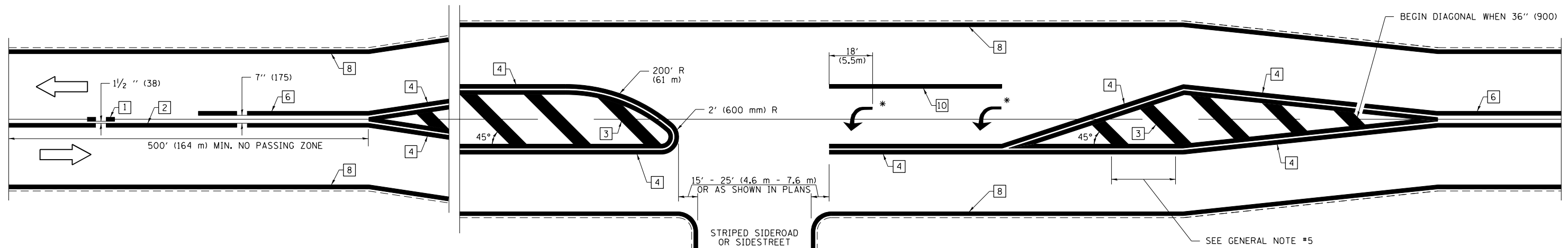
OPTION 2



PAVEMENT MARKING LEGEND



RURAL LEFT TURN STRIPING



* PLACE AN ARROW 18' (5.5 m) BACK FROM END OF THE SOLID WHITE LINE. PLACE ANOTHER ARROW EVEN WITH THE BEGINNING OF THE SOLID WHITE LINE. SPACE ADDITIONAL ARROWS EVENLY UP TO 80' (24.4 m) MAXIMUM SPACING. USE MINIMUM OF 2 ARROWS.

NOT TO SCALE

Note: All dimensions are in INCHES (millimeters) unless otherwise shown.

DISTRICT 7 DETAIL NO. 78000001

FILE NAME =	USER NAME = dbuescher	DESIGNED -	REVISED - NAS 06/22
P:\2023\ME23028.05 PTB 203-037 WD 5 -	70 SMART Resurfacing\01-CADD\Phase 2\02-Striping\001.dgn	CHECKED -	REVISED -
		DATE -	REVISED -

**STATE OF ILLINOIS
DEPARTMENT OF TRANSPORTATION**

**PAVEMENT MARKING AND RAISED REFLECTIVE PAVEMENT MARKERS
(RURAL & URBAN APPLICATIONS)**

SCALE: SHEET NO. 3 OF 4 SHEETS STA. TO STA.

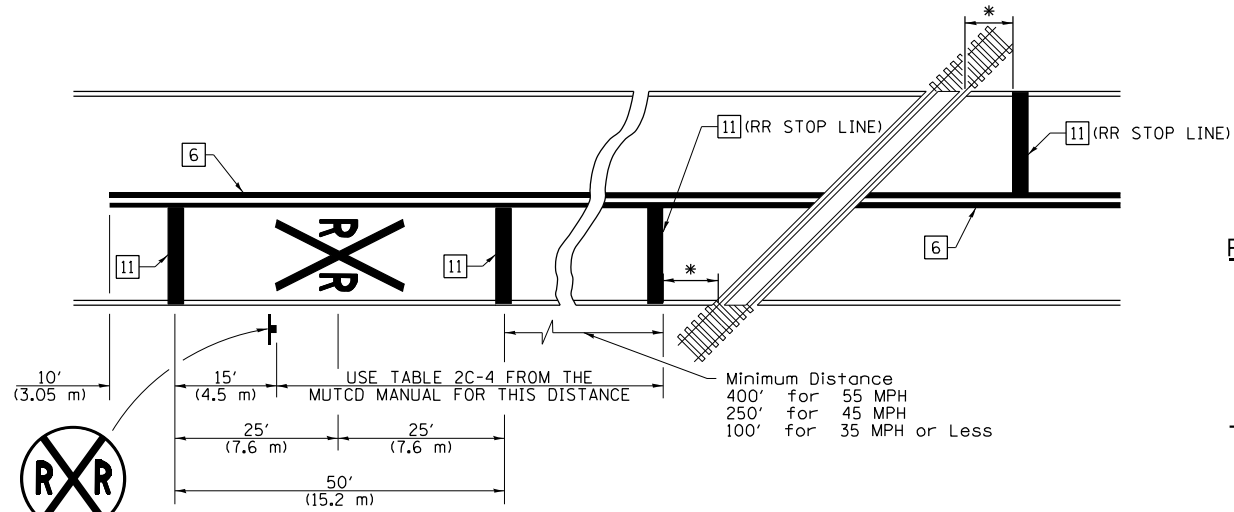
F.A. RTE.	SECTION	COUNTY	TOTAL SHEETS	SHEET NO.
			21	18
CONTRACT NO.				
ILLINOIS FED. AID PROJECT				

SUPPLEMENTAL PAVEMENT MARKING TREATMENT FOR RAILROAD-HIGHWAY GRADE CROSSING

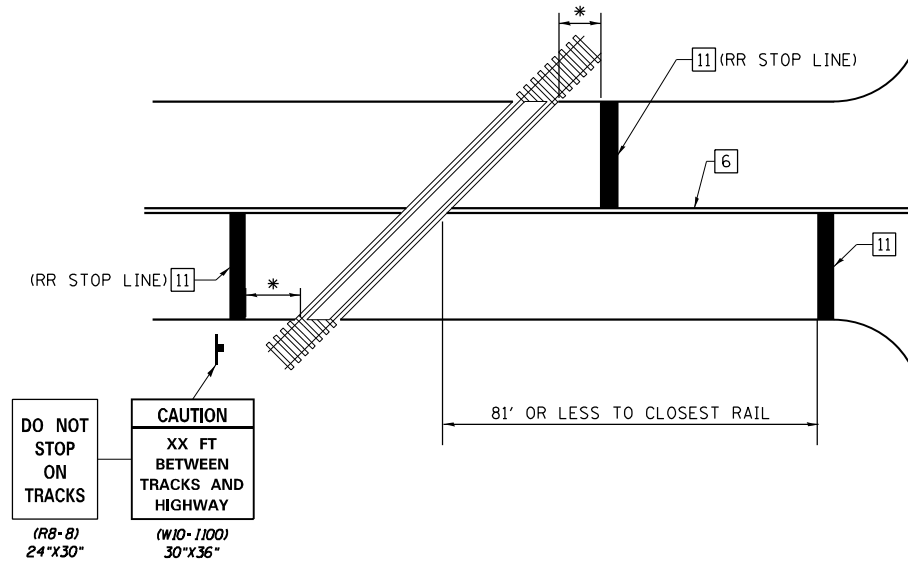
PAVEMENT MARKING LEGEND

- 1 4" (100) SKIP-DASH (YELLOW)
 - 2 4" (100) SOLID (YELLOW)
 - 3 12" (300) DIAGONAL (YELLOW)
 - 4 4" (100) DOUBLE YELLOW (NARROW)
 - 5 12" (300) SOLID WHITE
 - 6 4" (100) DOUBLE YELLOW (WIDE)
 - 7 6" (150) SKIP-DASH (WHITE)
 - 8 4" (100) SOLID (WHITE)
 - 9 12" (300) DIAGONAL (WHITE)
 - 10 6" (150) SOLID (WHITE)
 - 11 24" (600) STOP BAR (WHITE)
 - 12 8" (200) SOLID (WHITE)
 - 13 4" (100) PARKING WHITE
-

PAVEMENT MARKINGS AT RAILROAD-HIGHWAY GRADE CROSSING



RAILROAD CROSSING WITH NON-SIGNALIZED INTERSECTION

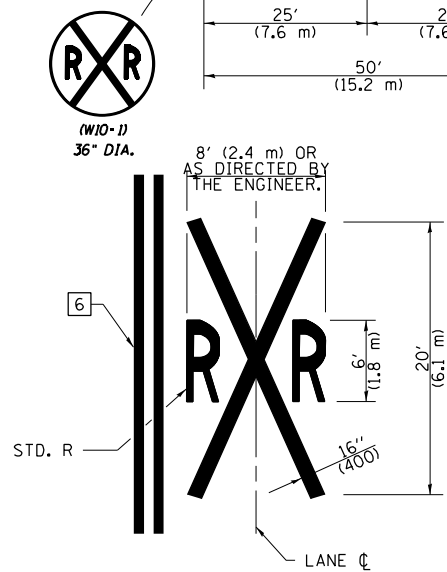


NOTES

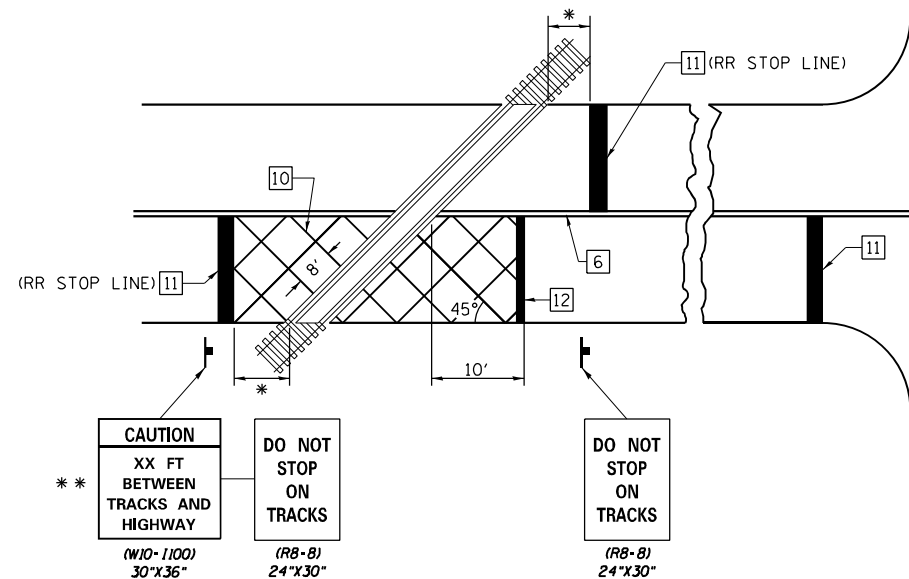
THE TRAVERSE SPREAD OF THE "X" MAY VARY ACCORDING TO LANE WIDTH.

ON MULTI-LANE ROADS, THE STOP LINES SHALL EXTEND ACROSS ALL APPROACH LANES AND SEPARATE RRR SYMBOLS SHALL BE PLACED ADJACENT TO EACH OTHER IN EACH LANE.

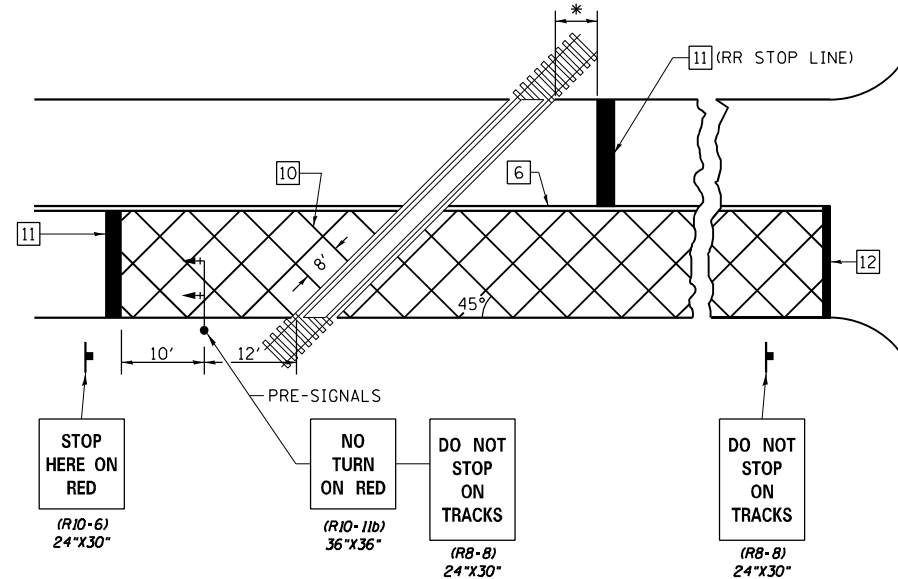
WHEN THE PAVEMENT MARKING SYMBOL IS USED, A PORTION OF THE SYMBOL SHOULD BE LOCATED DIRECTLY ADJACENT TO THE ADVANCE WARNING SIGN (W10-1) AS PLACED BY TABLE II-1, CONDITION B OF THE MUTCD.



RAILROAD CROSSING WITH INTERCONNECT ONLY

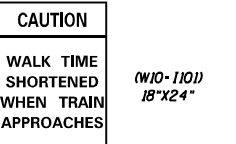


RAILROAD CROSSING WITH INTERCONNECT AND PRE-SIGNALS



GENERAL NOTES

- SUPPLEMENTAL PAVEMENT MARKINGS TO BE INSTALLED ONLY ON APPROACHES TO INTERSECTIONS CONTROLLED BY TRAFFIC SIGNALS WHICH ARE INTERCONNECTED WITH THE RAILROAD WARNING SIGNALS.
- EXTEND PAVEMENT MARKINGS TO THE INTERSECTION ONLY WHERE PRE-SIGNALS ARE USED.
- WHEN PEDESTRIAN SIGNALS ARE PRESENT WITH INTERCONNECTED SIGNALS, WARNING SIGN W10-1101 (18"X24") SHALL BE PLACED NEAR EACH PEDESTRIAN SIGNAL HEAD. COUNTDOWN PEDESTRIAN SIGNAL HEADS SHALL NOT BE UTILIZED ALONG WITH INTERCONNECTED SIGNALS.
- PLEASE REFER TO THE IDOT BUREAU OF OPERATION MEMO OPS T-06 DATED DECEMBER 1, 2020 FOR ADDITIONAL INFORMATION.



* 15' FROM NEAR RAIL OR 8' FROM AND PARALLEL TO GATE IF PRESENT

** WARNING SIGN W10-1100 SHALL BE USED AS AN INTERIM MEASURE AT INTERCONNECTED SIGNAL LOCATIONS WHERE PRE-SIGNALS ARE TO BE INSTALLED IN THE FUTURE. THIS SIGN SHALL BE REMOVED WHEN THE PRE-SIGNALS ARE INSTALLED AND THE PAVEMENT MARKINGS ARE EXTENDED TO THE INTERSECTION.

NOT TO SCALE

Note: All dimensions are in INCHES (millimeters) unless otherwise shown.

DISTRICT 7 DETAIL NO. 78000001

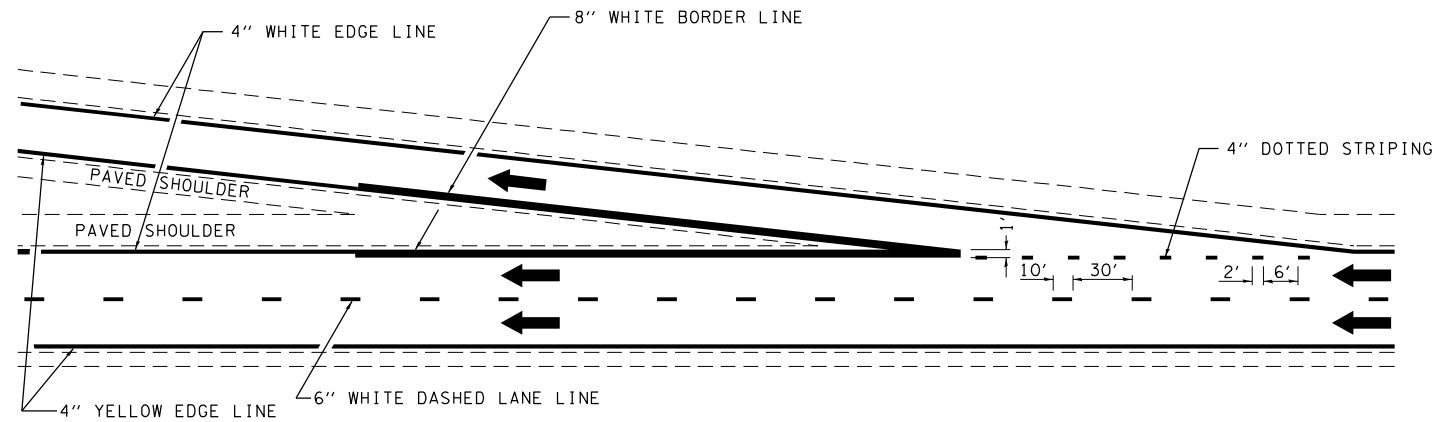
FILE NAME =	USER NAME = dbuescher	DESIGNED -	REVISED - NAS 06/22
P:\2023\ME23028.05 PTB 203-037 WD 5 -	70 SMART Resurfacing\01-CADD\Phase 2\02-514	CHECKED -	REVISED -
	01.dgn	DATE -	REVISED -
	PLOT SCALE = 100.0000' / in.		
	PLOT DATE = 12/4/2023		

STATE OF ILLINOIS
DEPARTMENT OF TRANSPORTATION

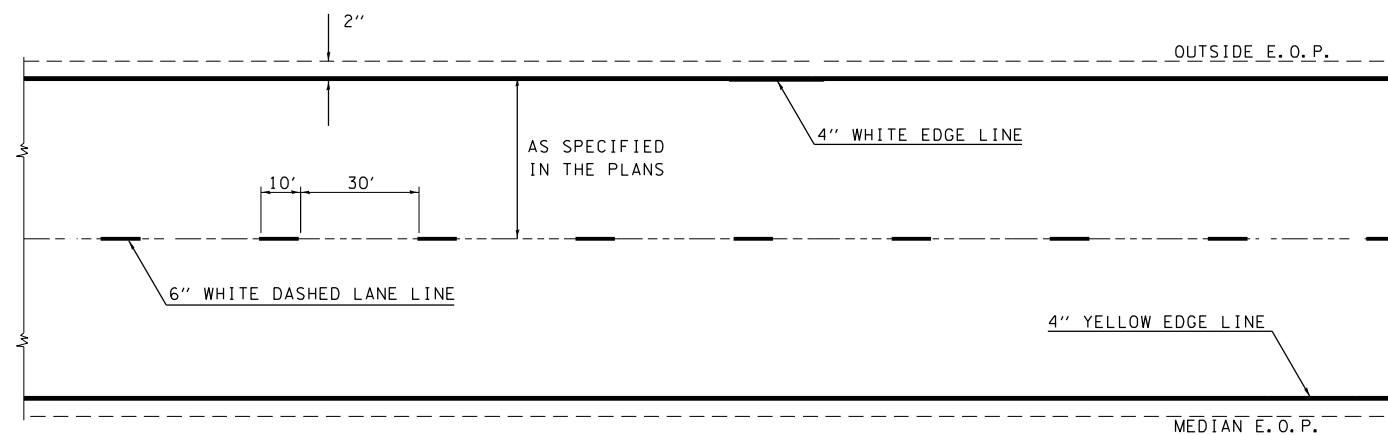
PAVEMENT MARKING AND RAISED REFLECTIVE PAVEMENT MARKERS
(RURAL & URBAN APPLICATIONS)

SCALE: SHEET NO. 4 OF 4 SHEETS STA. TO STA.

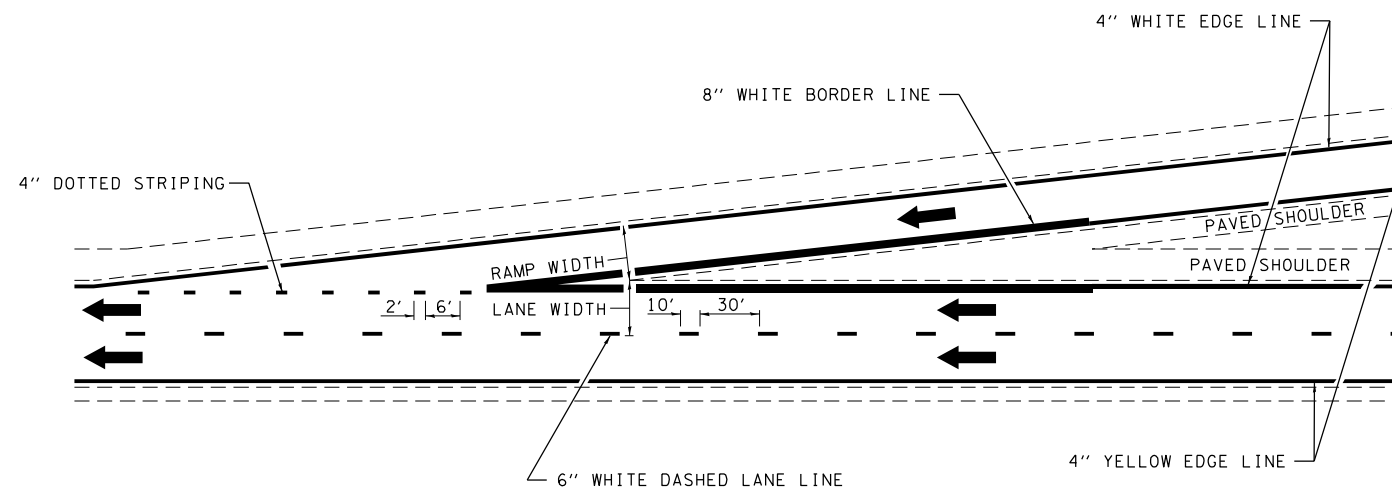
F.A. RTE.	SECTION	COUNTY	TOTAL SHEETS	SHEET NO.
			21	19
CONTRACT NO.				
ILLINOIS FED. AID PROJECT				



TYPICAL EXIT RAMP MARKING



TYPICAL CENTERLINE & EDGELINE MARKINGS



TYPICAL ENTRANCE RAMP MARKING

NOT TO SCALE

DISTRICT 7 DETAIL NO. 7800002

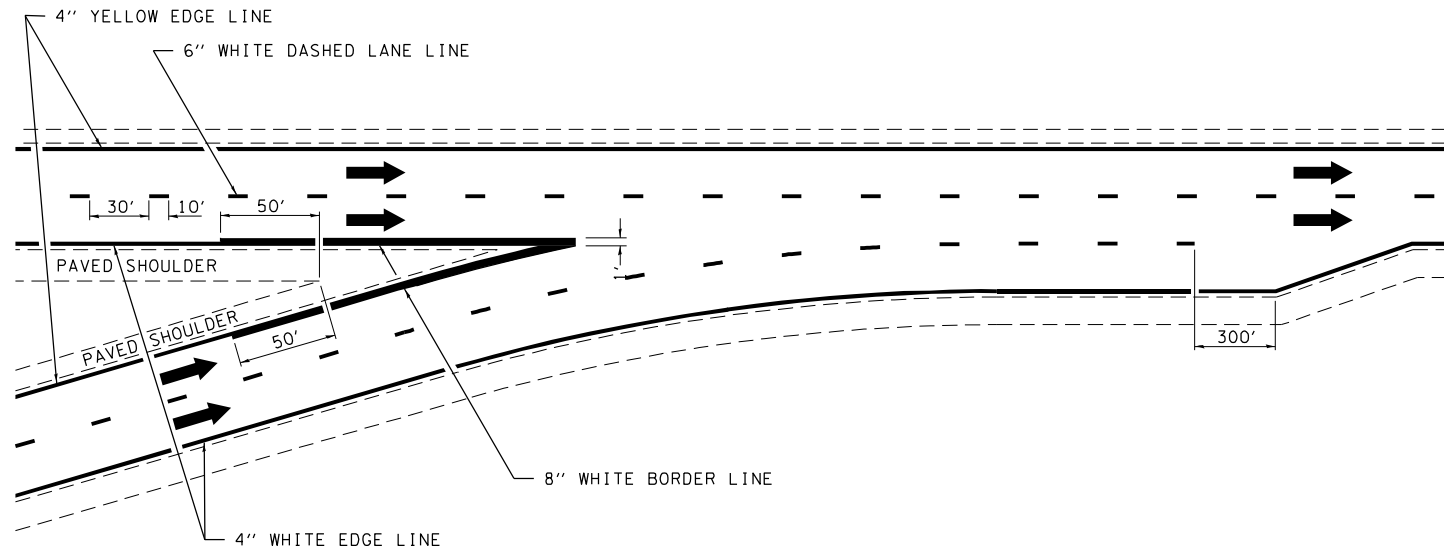
FILE NAME =	USER NAME = steffenmk	DESIGNED -	REVISED - DRM 08-04
ei:\pwork\pwork\steffenmk\d0125064\7800002.dgn		DRAWN -	REVISED - MKS 04-08
	PLOT SCALE = 2.0000' / in.	CHECKED -	REVISED - DRM 01-09
	PLOT DATE = 8/16/2013	DATE -	REVISED - DRM 12-10

**STATE OF ILLINOIS
DEPARTMENT OF TRANSPORTATION**

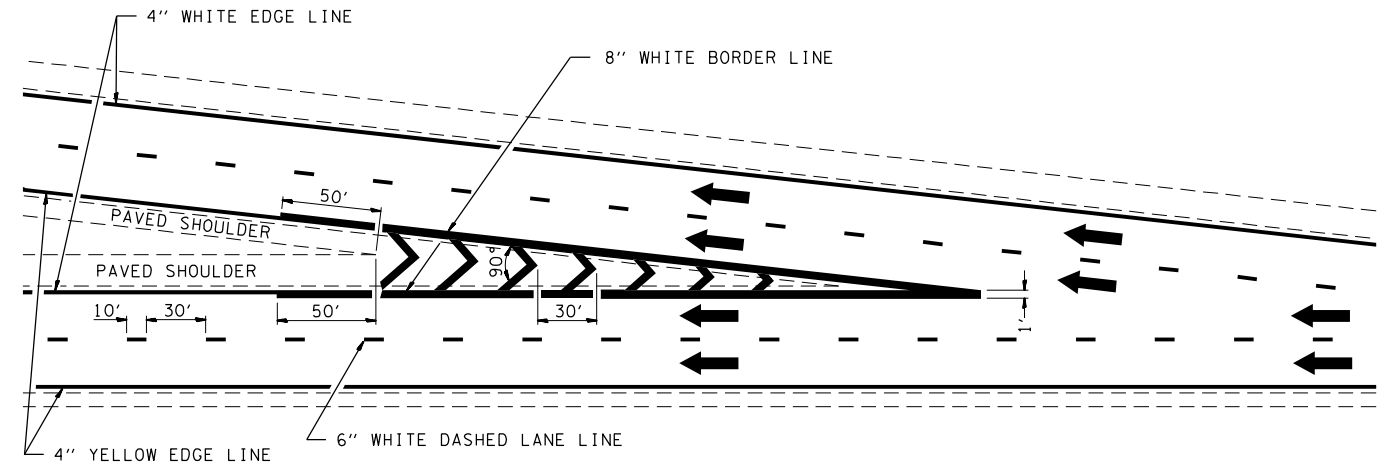
TYPICAL APPLICATIONS OF INTERSTATE PAVEMENT MARKING

SCALE: SHEET NO. 1 OF 2 SHEETS STA. TO STA.

F.A. RTE.	SECTION	COUNTY	TOTAL SHEETS	SHEET NO.
			21	20
CONTRACT NO.				
FED. ROAD DIST. NO. ILLINOIS FED. AID PROJECT				

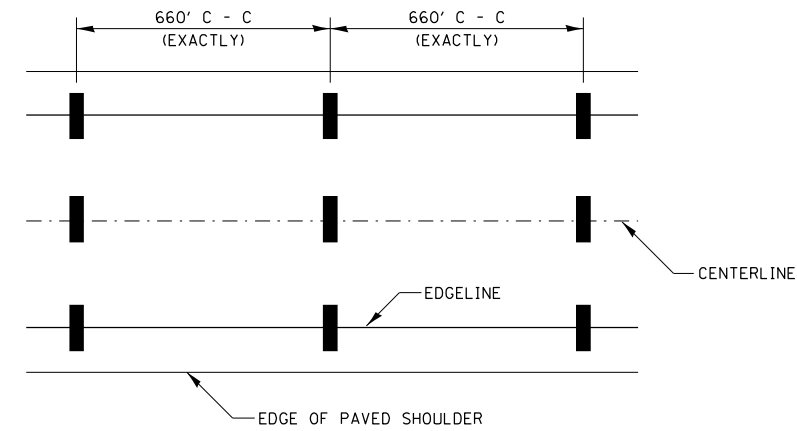


TYPICAL CONVERGENCE MARKING

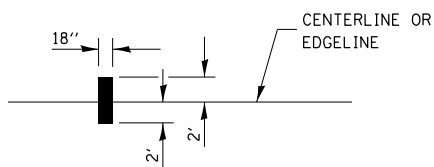


TYPICAL DIVERGENCE MARKING

AERIAL SPEED CHECK ZONES



IT WILL BE NECESSARY TO HAVE A REPRESENTATIVE OF THE STATE POLICE PRESENT SO THAT THE ACCURACY OF MEASUREMENT CAN BE ATTESTED TO IN COURT.



NOT TO SCALE

DISTRICT 7 DETAIL NO. 7800002

FILE NAME =	USER NAME = steffenmk	DESIGNED -	REVISED - MMO 12-99
ei:\pw\work\p\idot\steffenmk\d0125064\78000002.dgn		DRAWN -	REVISED - DRM 08-04
	PLOT SCALE = 2.0000' / in.	CHECKED -	REVISED - MKS 04-08
	PLOT DATE = 8/16/2013	DATE -	REVISED - DRM 01-09

STATE OF ILLINOIS
DEPARTMENT OF TRANSPORTATION

TYPICAL APPLICATIONS OF INTERSTATE PAVEMENT MARKING

SCALE: SHEET NO. 2 OF 2 SHEETS STA. TO STA.

F.A. RTE.	SECTION	COUNTY	TOTAL SHEETS	SHEET NO.
			21	21
CONTRACT NO.				
FED. ROAD DIST. NO. ILLINOIS FED. AID PROJECT				